

HYPENA CHERYLAE N. SP., A NEW DELTOID MOTH FROM SOUTH AFRICA (LEPIDOPTERA: NOCTUIDAE: HYPENINAE)

M. LÖDL

Naturhistorisches Museum Wien, 2. Zoologische Abt., Burgring 7, A-1014 Wien, Austria

ABSTRACT.— *Hypena cherylae* n. sp., is described from South Africa. The male adult, the lateral view of the head and the male genitalia are illustrated. The female is unknown. The species is placed near *Hypena polycyma* Hampson, 1902.

KEY WORDS: Africa, Ethiopian, *Hypena cherylae* n. sp., Madagascar, Natal, taxonomy.

The recently published first part of the revision of the Afrotropical *Hypena* species contains 71 valid species for Africa and Madagascar (Lödl, 1994d). Significantly more new species are supposed to exist in the rain- and cloud-forests of the mountainous regions. Particularly the subgenus *Hypena* Schrank, 1802 (as defined in Lödl, 1994d), is a difficult unit. The most taxonomically useful features in the males of this subgenus are found in the relational characters of the head, the shape of uncus and aedeagus and the dorsal margin of the sacculus.

Hypena cherylae Lödl, new sp.

Diagnosis.— Wingspan: 26mm. The new species is related to *Hypena polycyma* Hampson, 1902 and can be simply recognized by the remarkable shape of the male forewings, the stout and compact head, and the significantly flat hump of the dorsal base of the sacculus.

Description.— **MALE.**— *Head:* Stout and compact, dark brown, crest of the forehead distinct, dark greyish brown. Antennae finely ciliate, ciliae as long as width of antennal segments. Labial palpi stout and short, pale greyish ochreous, speckled with dark brown scales. Third joint just slightly longer than 0.5mm (Length of 2. palpus-segment: Length of 3. palpus-segment = 3.9; Diameter of eye: Distance of eyes: 1.35). Diameter of eye = 1.25mm. *Thorax:* Compact and broad in the male, dark brown, lateral parts pale ochreous, legs dark brown. *Abdomen:* Brown with dark tufts on the abdominal segments. *Forewing:* Significantly more compact, stout and short than in *H. polycyma*. Ground colour dark brown and dark reddish brown with some irregular pale ochreous and whitish marks. Apex rounded, outer and posterior margin convex. Apical moon ochreous, short and small with two tiny, black dots marked with white at their outer margin. Apical moon not elongate, more or less compact with insignificant black arrow-patches at the subterminal area. Subterminal line marked with insignificant, small, dark spots. Postmedial line dark brown and pronged with its most striking section near the costal margin. This section is right-angled in its relation to the costal margin and attended by an ivory coloured stripe. Remaining parts of the forewings suffused by dark, irregular speckles. Antemedial line insignificantly marked, broad and dark brown. *Hindwing:* Unicol-



Fig. 1. *Hypena cherylae*, n. sp., holotype ♂, Natal (Wingspan = 26 mm).

oured dark greyish brown. *Male genitalia:* Small (total length of the genitalia corpus 1.4mm) and typical for the subgenus *Hypena*. Valves oval, lacking any processi and densely covered with hair-like scales. Dorsal margin of sacculus with significant flat hump, in other species of this group more or less strikingly "hunchbacked" or even processus-like. Juxta big, like a deltoid-shaped kite. Anellus continuously and densely covered with fine teeth. Tegumen strong and broad. Uncus strong, thick and hook-shaped. Terminal tip right-angled. Aedeagus about 0.8mm long, not strikingly curved (angle between coecal and distal part 155°). Aedeagus cuff and distal nose prominent, the latter straight and rounded. Shark-teeth numerous. Coecal part more or less straight, not upcurved.

FEMALE.— Unknown.

Immature stages.— Unknown.

Distribution.— South Africa, Natal.

Etymology.— This new species is dedicated to my close friend, Ms. Cheryl Frances Sanchez (Trinidad / London).

Type.— *Holotype* ♂: [SOUTH AFRICA], Natal, 76.80, BM gen.sl.no. 15308 (Lödl gen.prep.no. 457) (BMNH, London).

Remarks.— The new species is placed in the subgenus *Hypena* Schrank, 1802, near *H. polycyma*. Its distinctive characters justify the description although the female is unknown. Comprehensive notes and details on the splitting within the genus *Hypena* and particularly this species group have been given by Lödl (1994a, b,c,d; 1995a,b).

LITERATURE CITED

Lödl, M.

- 1994a. Remarks on the classification of the genera *Hypena* Schrank, 1802, *Dichromia* Guenée, 1854 and *Harita* Moore, 1882 (Lepidoptera: Noctuidae). *Nota Lepid.* (Basel), 16:241-250.
- 1994b. Notes on the synonymy of the genera *Hypena* Schrank, 1802, *Dichromia* Guenée, 1854 and *Harita* Morre, 1882 (Lepidoptera: Noctuidae: Hypeninae). *Zeit. Arbeitsgem. Österr. Ent.* (Vienna), 45:11-14.
- 1994c. *Hypena evamariae* n. sp., eine neue ostafrikanische Hypeninen-Art aus der Verwandtschaft von *Hypena polycyma* Hampson 1902 (Lepidoptera: Noctuidae). *Ent. Zeit.* (Frankfurt), 104:105-112.
- 1994d. Revision der Gattung *Hypena* Schrank, 1802 s.l., der äthiopischen und madagassischen Region, Teil 1. *Ann. Naturhist. Mus. Wien*, 96B:373-590.

1995a. *Hypena mariachristinae* n. sp., eine neue ostafrikanische Hypeninen-Art aus der Verwandtschaft von *Hypena evamariae* Lödl 1994 (Lepidoptera: Noctuidae). *Ent. Zeit.* (Frankfurt), 105:17-24.

1995b. *Hypena padelekorum* n. sp., eine neue äthiopische Hypeninen-Art aus der Verwandtschaft von *Hypena polycyma* Hampson 1902 (Lepidoptera: Noctuidae). *Ent. Zeit.* (Frankfurt), 105:308-314.

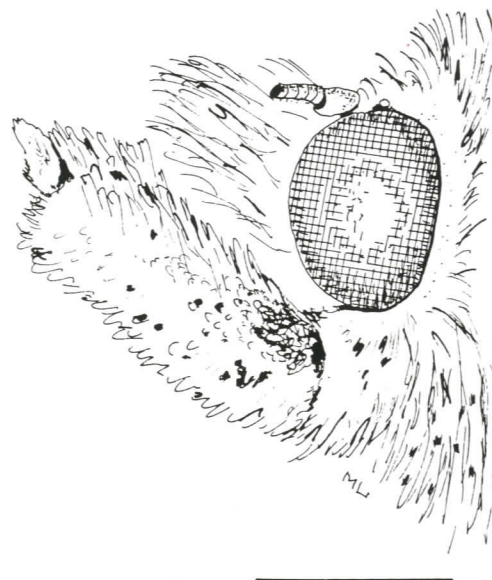


Fig. 2. *Hypena cherylae*, n. sp., holotype male, lateral view of the head (line = 1 mm).

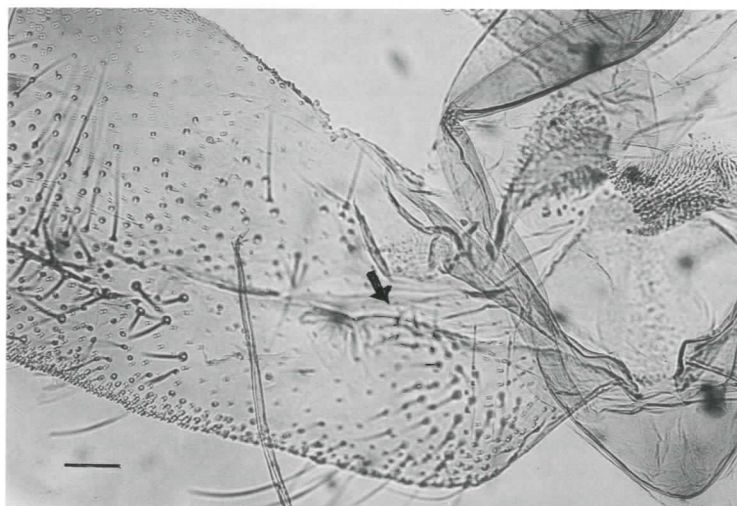
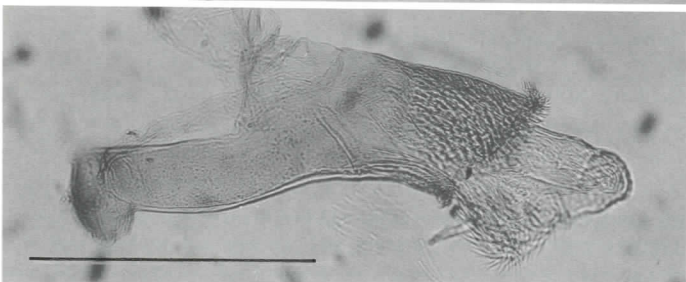
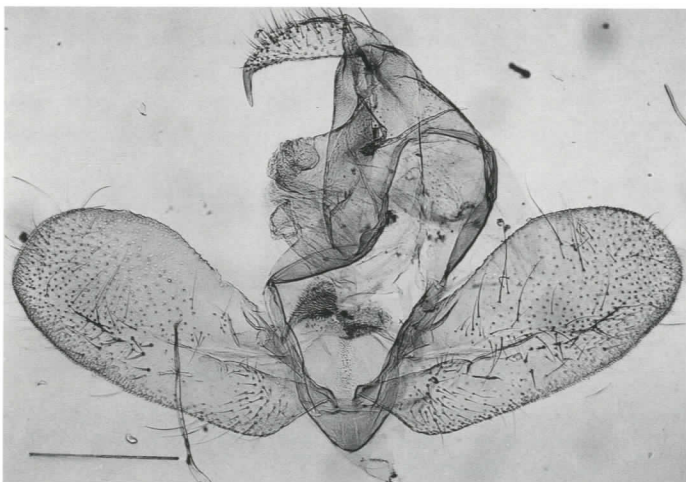


Fig. 3-4. *Hypena cherylae*, n.sp., holotype: 3. ♂ genitalia (BM gen.sl.no. 15308), aedeagus below (line = 0.5 mm). 4. Base of left valve with arrow-marked flat hump at dorsal margin of sacculus (line = 0.1 mm).