

GYNANDROMORPH OF *NACOPHORA QUERNARIA* IN FLORIDA (LEPIDOPTERA: GEOMETRIDAE)

JOHN S. KUTIS and JOHN B. HEPPNER

9783 SE Hywy. 441, Belleview, FL 32620, and Florida State Collection of Arthropods,
P.O. Box 1269, Gainesville, FL 32602, USA

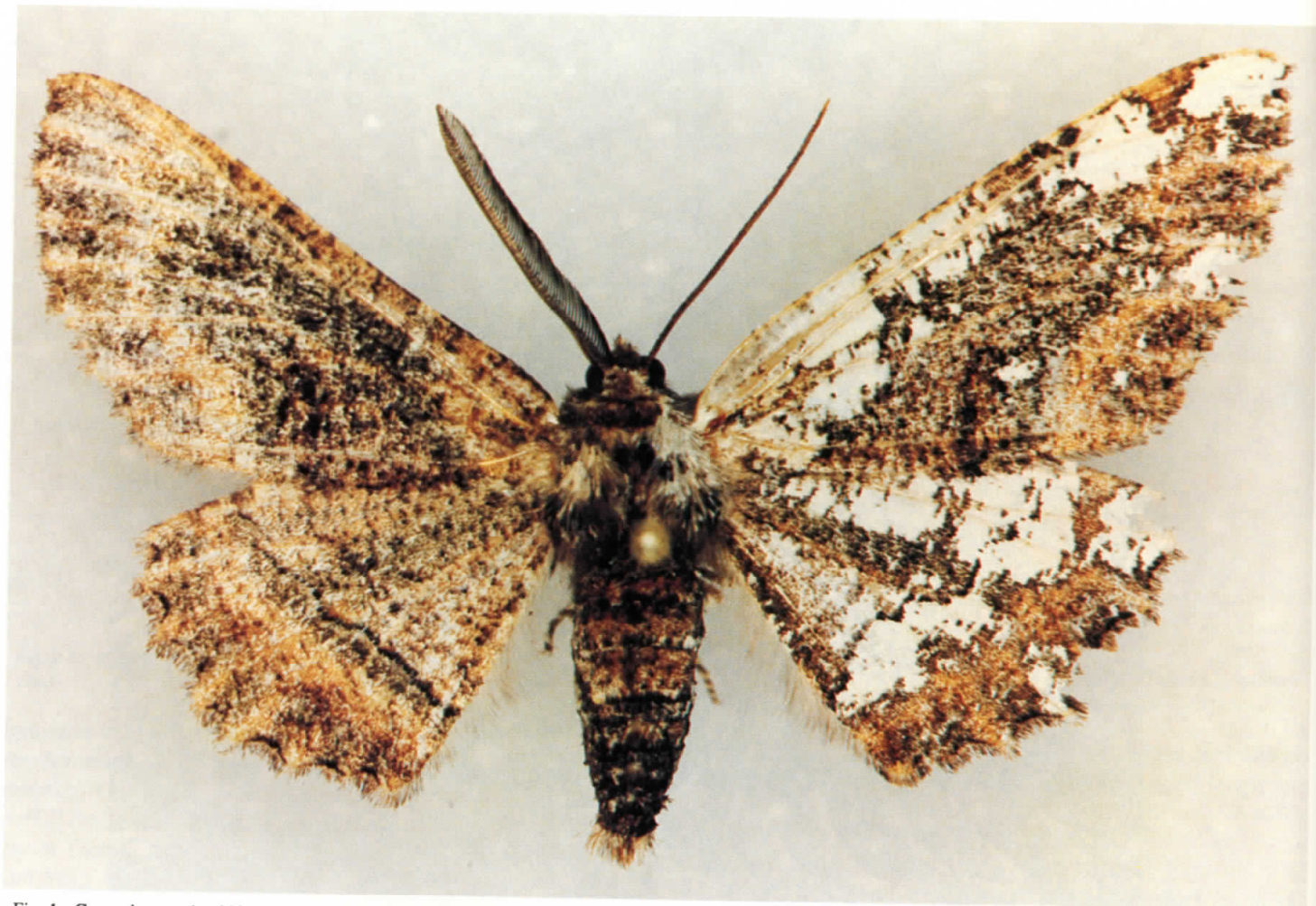


Fig. 1. Gynandromorph of *Nacophora quernaria*, collected in Florida (Belleview, Marion Co., 4 Feb 1989, J. Kutis): male upper wing surface (left), female (right).

The rare gynandromorph of *Nacophora quernaria* (J. E. Smith) shown here was collected in typical forest habitat in Marion County, north central Florida. Due to the great difference in the appearance of the male and the female in this species, the resultant gynandromorph is quite apparent. The specimen shows a perfectly bilateral division between the male and female, which can be noted in the different antennae, the thorax, and the post-

erior anal tufts of the abdomen.

It is not known if the moth could have been viable in reproducing or laying eggs.

GYNANDROMORPH OF *NACOPHORA QUERNARIA* IN FLORIDA (LEPIDOPTERA: GEOMETRIDAE)

JOHN S. KUTIS and JOHN B. HEPPNER

9783 SE Hywy. 441, Belleview, FL 32620, and Florida State Collection of Arthropods,
P.O. Box 1269, Gainesville, FL 32602, USA

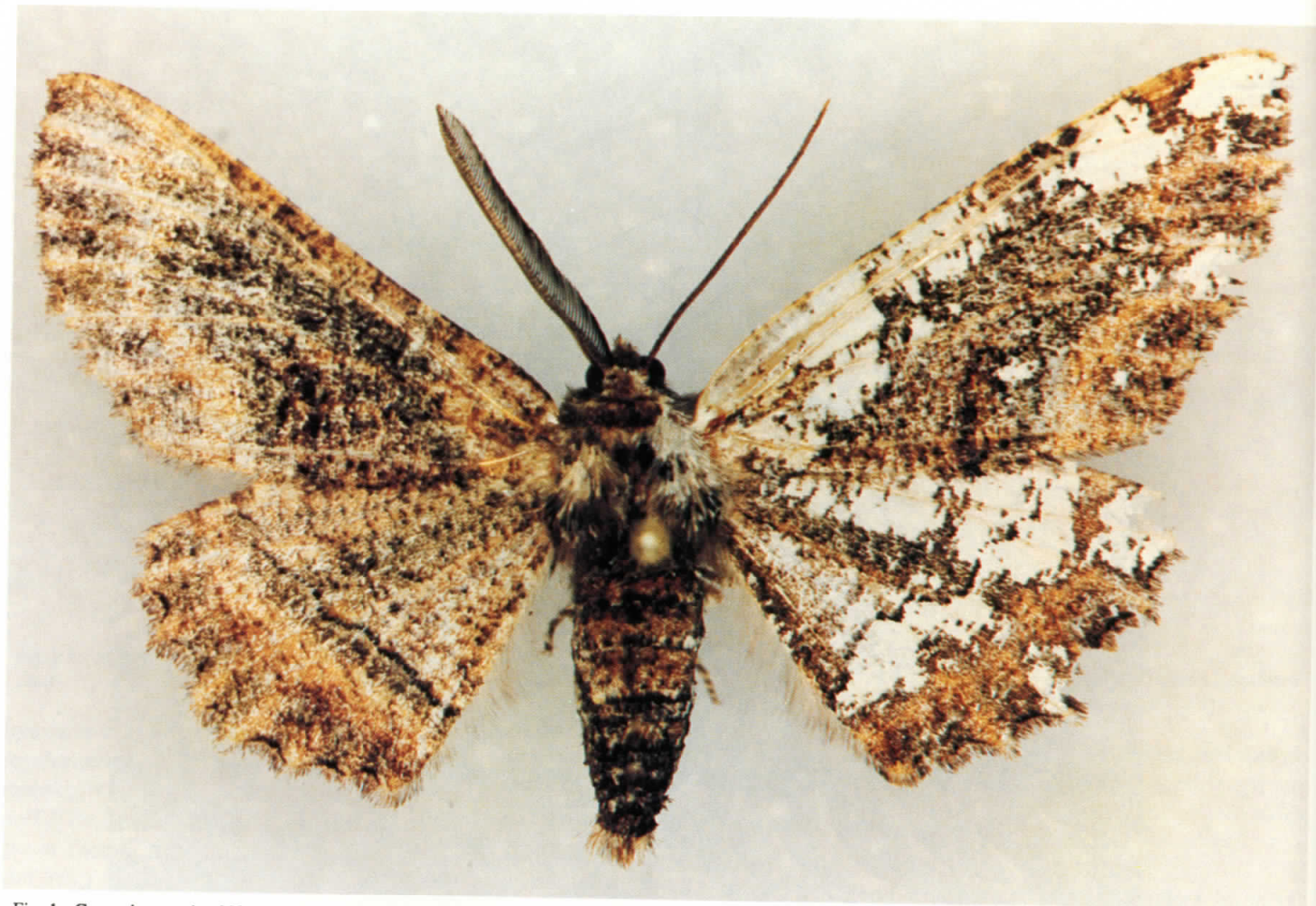


Fig. 1. Gynandromorph of *Nacophora quernaria*, collected in Florida (Belleview, Marion Co., 4 Feb 1989, J. Kutis): male upper wing surface (left), female (right).

The rare gynandromorph of *Nacophora quernaria* (J. E. Smith) shown here was collected in typical forest habitat in Marion County, north central Florida. Due to the great difference in the appearance of the male and the female in this species, the resultant gynandromorph is quite apparent. The specimen shows a perfectly bilateral division between the male and female, which can be noted in the different antennae, the thorax, and the post-

erior anal tufts of the abdomen.

It is not known if the moth could have been viable in reproducing or laying eggs.