

## AN ANNOTATED CHECKLIST OF GESNERIACEAE TYPE SPECIMENS IN THE MARIE SELBY BOTANICAL GARDENS HERBARIUM (SEL)

JOHN R. CLARK\* AND BRUCE K. HOLST\*\*

Marie Selby Botanical Gardens, 811 S. Palm Avenue, Sarasota, FL 34234-7726, USA.  
E-mail: bholst@selby.org

LAURENCE E. SKOG

Department of Systematic Biology/Botany, MRC-166, P.O. Box 37012, Smithsonian Institution,  
Washington, DC 20013-7012, USA.

**ABSTRACT.** An annotated list of the type specimens of Gesneriaceae in the Marie Selby Botanical Gardens Herbarium (SEL), including the former holdings of the Gesneriad Research Foundation Herbarium (GES), is presented. The annotated list includes information on locations of the duplicates of the type specimens in other herbaria. We here publish two new combinations, *Columnnea robusta* (Wiehler) L.E. Skog and *C. tutunendana* (Wiehler) L.E. Skog; two new names, *Columnnea citriflora* L.E. Skog and *Columnnea filamentososa* L.E. Skog; seven newly designated neotypes; eight newly designated lectotypes; two lectotype corrections; and one name correction.

**Key words:** Gesneriaceae, taxonomy, neotropics, type

### INTRODUCTION

In the spring of 2002, Hans Wiehler, founder of the Gesneriad Research Foundation in Sarasota, Florida, offered the Foundation's Herbarium (GES) to the Marie Selby Botanical Gardens Herbarium (SEL). He was moving due to declining health and made the offer because of his former association with Selby Gardens as a staff member in the 1970s and early 1980s. In April 2002, the complete GES collection was transferred to SEL.

The Gesneriad Research Foundation Herbarium (GES) contained the collections made primarily by Dr. Wiehler and his associates between 1970 and 1999. The collections contained nearly 2000 field collections, collections from cultivated plants, specimens preserved in liquid, and more importantly, more than 30 type collections for names of Gesneriaceae species published by Wiehler from 1972 to 1995. When received at Selby Gardens, the GES collection was in need of curation. Most of the dried specimens were not mounted and damage had accrued over time, resulting from less than optimal storage conditions. In an ongoing effort to curate and stabilize the GES collection and consolidate it with SEL, we have given priority to the curation and distribution of the type specimens.

Among the GES specimens were many type

collections intended for distribution to other herbaria. Wiehler based his new species both on collections from the wild and/or from greenhouse progeny of material gathered from the wild. It has been a challenge to determine, in many cases, which were the true type specimens and where they are located. During and after Wiehler's tenure at Selby Gardens, some type specimens were distributed with either or both field number and greenhouse accession number, adding to the complexity of determining the status of a particular specimen.

After Wiehler left to establish the Gesneriad Research Foundation in the 1980s, Selby Gardens distributed a number of his remaining gesneriad specimens. Apparently, in some cases, the number of specimens were insufficient to supply all of the herbaria designated in the species protologues. In a few cases, no type material was found for some species. As director of the Gesneriad Research Foundation, Wiehler continued to publish, but there is little evidence that he or his associates distributed any type specimens. Many of the designated types, if extant, remained in the GES collection. The goal of the Selby Gardens Herbarium is to distribute equally the remaining type specimens, following the distribution planned by Wiehler. Where possible, a type specimen from a wild collection is being designated for a herbarium in the country of origin, and often this specimen will be the holotype. This article thus describes the current distribution status of all Gesneriaceae types in the SEL herbarium, which now also includes the types formerly at GES.

\* Current address: School of Biological Sciences, Washington State University, Pullman, WA 99164-4236. E-mail: clarkjr@mail.wsu.edu

\*\* Corresponding author.

For each species listed below, the following sequence of data is used: basionym genus and species (in bold), author(s) of the species name, original place of publication, type locality if collected from the wild (or source of cultivated material), date collected, collector of type specimen, and collection number of type specimen. The distribution of types as listed in the original publication is then given followed by origin of cultivated material (if cultivated material was used for the type descriptions and specimens). The actual known distribution of types based on our findings then follows.

For those species where we have designated new types (i.e., neotypes or lectotypes), the above information is given as in the original publication, followed by the neotypification or lectotypification as needed. The currently accepted name for each species, if different from that published for the type, is also included. These are listed at the end of each section and are preceded by either "Basionym of" or "Synonym of" and followed by its place of publication. In the case of a new synonymy, an equal sign (=) precedes the accepted name. Finally, a brief commentary is included when warranted. In a few cases, we have included types from other herbaria that typify names of new species described by Wiehler, even though no specimen may now be present at SEL. For completeness of this checklist, the few gesneriad type specimens for species described by other authors and deposited at SEL also are included.

Efforts to determine the actual distribution of types for all species cited has included sight verification of specimens at various herbaria by L. Skog. We have reviewed online databases (particularly of the New York Botanical Garden, Missouri Botanical Garden, and the U.S. National Museum of Natural History) as well as the SEL and GES holdings; and we have corresponded with several herbaria, where staff members have verified institutional holdings. Only after completing a search of the entire GES collection did we choose to lectotypify or neotypify material in place of the completely missing types. In addition, we ask that institutions cited as having a particular specimen verify their type holdings, including verification of collection dates, for each specimen.

For clarification, the acronym MSBG is used to denote the greenhouse collections at the Marie Selby Botanical Gardens to differentiate these living plants from the preserved plants in the Selby Gardens Herbarium (SEL). Likewise, GRF represents the greenhouse collections of living plants from the former Gesneriad Research Foundation, and GES denotes the herbarium of the Foundation.

For digital images of most of the Gesneriaceae type specimens housed at SEL, see the Herbarium page on the Selby Gardens website (<http://www.selby.org/research/herb/herb.htm>).

#### ANNOTATED LIST OF GESNERIACEAE TYPES

**Achimenes admirabilis** Wiehler, *Phytologia* 73(3): 220. 1992 [see also: *Gesneriana* 1: 29, fig. 1. 1995]. **TYPE:** Type collection made from greenhouse-grown plant cultivated at GRF, accession no. G-1024, 5 Jan. 1984, *H. Wiehler 8404* (PUBLISHED TYPE DISTRIBUTION: Holotype: GES; isotypes: BH, K, MEXU, NY, SEL, US). Origin of cultivated material: Mexico. Oaxaca: Juchitán, headwaters of Río Coatzacoalcos, E of Santa María Chimalapa, above junction with Río Blanco; rhizomes collected Apr. 1966, *T.B. McDougall 668*.

ACTUAL TYPE DISTRIBUTION: Holotype: MEXU; isotypes: BH, K, NY, SEL, US.

**Alloplectus dodsonii** Wiehler, *Selbyana* 2(1): 67, pl. 19A. 1977. **TYPE:** Ecuador. Los Ríos: Río Palenque Science Center, km 56 between Quevedo and Santo Domingo, 19 Jul. 1971, *H. Wiehler & C.H. Dodson 7105* (PUBLISHED TYPE DISTRIBUTION: Holotype: SEL; isotypes: BR, K, MO, NY, QCA, S, US).

ACTUAL TYPE DISTRIBUTION: Holotype: SEL.

**Besleria chiriquensis** Wiehler, *Selbyana* 5(1): 73, pl. 1A. 1978. **TYPE:** Panama. Chiriquí: Vicinity of Barriles, 6–16 km S of Volcán, 25 Apr. 1971, *R.L. Dressler & N.H. Williams 3988* (PUBLISHED TYPE DISTRIBUTION: Holotype: SEL; isotype: MO).

ACTUAL TYPE DISTRIBUTION: Holotype: SEL; isotype: MO.

**Besleria maasii** Wiehler, *Selbyana* 5(1): 73, pl. 1B. 1978. **TYPE:** Type collection made from greenhouse-grown plant cultivated at MSBG, accession no. W-2186, 20 Aug. 1978, *H. Wiehler 78123* [78132, in error] (PUBLISHED TYPE DISTRIBUTION: Holotype: SEL; isotypes: BH, CAY, K, NY, SEL, U, US). Origin of cultivated material: French Guiana. Saul. Seed from the collection *P. Maas 2281* (U).

ACTUAL TYPE DISTRIBUTION: Holotype: SEL; isotypes: BH, CAY, K, NY, P, U, US, VEN.

**Besleria steyermarkiorum** Wiehler ex L.E. Skog, *Opera Botanica* 92: 233, fig. 6. 1987. **TYPE:** Venezuela. Yaracuy: Headwaters of

Quebrada El Amparo, 10 km N of Salom, 30 Nov. 1974, *J. A. Steyermark et al.* 111182 (PUBLISHED TYPE DISTRIBUTION: Holotype: VEN; isotypes: F, US).

ACTUAL TYPE DISTRIBUTION: Holotype: VEN; isotypes: F, SEL, US.

**Bucinella nariniana** Wiehler, *Selbyana* 2(1): 91, pl. 27. 1977. **TYPE:** Colombia. Nariño: At km 140; road between Altaquer and Junín, 10 May 1972, *H. Wiehler et al.* 72201 (PUBLISHED TYPE DISTRIBUTION: Holotype: SEL; isotypes: COL, GH, K, MO, NY, P, S, U, US, W).

ACTUAL TYPE DISTRIBUTION: Holotype: SEL; isotypes: COL, GH, K, MO, NY, P, QCA, S, U, US, W.

Basionym of *Bucinellina nariniana* (Wiehler) Wiehler, *Selbyana* 5(3–4): 381. 1981 and *Columnea nariniana* (Wiehler) L.P. Kvist & L.E. Skog, *Allertonia* 6: 347. 1993.

**Bucinella paramicola** Wiehler, *Selbyana* 2(1): 91, pl. 28A. 1977. **TYPE:** Colombia. Nariño: Near Altaquer by waterfall, 10 May 1972, *H. Wiehler & N.H. Williams* 72221a (PUBLISHED TYPE DISTRIBUTION: Holotype: SEL; isotypes: COL, GH, K, MO, NY, P, S, SEL, U, US, W).

ACTUAL TYPE DISTRIBUTION: Holotype: SEL; isotypes: COL, F, GH, K, MO, NY, P, S, SEL, U, US, W, WAG.

Basionym of *Bucinellina paramicola* (Wiehler) Wiehler, *Selbyana* 5(3–4): 381. 1981 and *Columnea paramicola* (Wiehler) L.P. Kvist & L.E. Skog, *Allertonia* 6: 348. 1993.

**Codonanthe chiricana** Wiehler, *Selbyana* 2(1): 95, pl. 28C. 1977. **TYPE:** Type collection made from greenhouse-grown plant cultivated at MSBG, accession no. W-2267, 1 Jul. 1977, *H. Wiehler* 77110 (PUBLISHED TYPE DISTRIBUTION: Holotype: SEL; isotypes: K, MO, PMA, US). Origin of cultivated material: Panama. Chiriquí: near Valle Hornito and Cerro Hornito, Fortuna Dam site; cuttings collected Aug. 1976, *R.L. Dressler s.n.*

ACTUAL TYPE DISTRIBUTION: Holotype: SEL; isotypes: K, MO, PMA, US.

**Codonanthe corniculata** Wiehler, *Selbyana* 2(1): 95, pl. 28D. 1977. **TYPE:** Type collection made from greenhouse-grown plant cultivated at MSBG, accession no. G-932, 1 Jul. 1977, *H. Wiehler* 77111 (PUBLISHED TYPE DISTRIBUTION: Holotype: SEL; isotypes: F, K, MO, NY, US). Origin of cultivated material: Peru. Loreto; near Iquitos;

cuttings collected in 1965, *R.L. Dressler s.n.*

ACTUAL TYPE DISTRIBUTION: Holotype: SEL; isotypes: F, NY, US.

**Codonanthe digna** Wiehler, *Selbyana* 5(2): 214, pl. 1A. 1979. **TYPE:** Type collection made from greenhouse-grown plant cultivated at MSBG, accession no. W-1139, 6 Sep. 1973, *H. Wiehler* 7330 (PUBLISHED TYPE DISTRIBUTION: Holotype: SEL; isotypes: F, HB, K, MO, NY, R, RB, SEL, SP, US). Origin of cultivated material: Plants of unknown origin, probably native to SE Brazil.

ACTUAL TYPE DISTRIBUTION: Holotype: SEL; isotypes: F, HB, INPA, K, MO, NY, R, RB, SP, US.

**Codonanthe elegans** Wiehler, *Selbyana* 7(2–4): 344, pl. 5B. 1984. **TYPE:** Type collection made from greenhouse-grown plant cultivated at MSBG and GRF, accession no. W-2588, 29 Jul. 1983, *H. Wiehler* 8301 (PUBLISHED TYPE DISTRIBUTION: Holotype: GES; isotypes: B, GH, K, MO, NY, SEL, US, W). Origin of cultivated material: Belize. Toledo: Abraham Camp, between San José and Edwards Central; collected about 1975, *F. Boutin* 5173.

ACTUAL TYPE DISTRIBUTION: Holotype: SEL.

**Codonanthe erubescens** Wiehler, *Phytologia* 73(3): 221. 1992 [see also: *Gesneriana* 1: 31, fig. 2. 1995]. **TYPE:** Ecuador. Morona-Santiago: 10 km S of Gualaquiza, on road from Limón to Zamora, 22 Apr. 1988, *H. Wiehler & GRF Expedition* 88152 (PUBLISHED TYPE DISTRIBUTION: Holotype: GES; isotypes: QCA, F, K, MO, NY, S, SEL, U, US).

ACTUAL TYPE DISTRIBUTION: NOT FOUND: **NEOTYPE** here designated: *Gesneriana* 1: 32, fig. 2. 1995. [reprinted in FIGURE 1 of this paper].

We have found no specimens attributable to *Codonanthe erubescens*, none of the type specimens cited in the original publication in *Phytologia*, nor any of the several specimens cited in the subsequent discussion of this species in *Gesneriana*. In addition, no other specimens of *Codonanthe* currently in herbaria that we have examined appear to be *C. erubescens*. Therefore, to serve as a nomenclatural type, following ICBN Article 9.6 (Greuter et al. 2000), we have selected the illustration of the species that first appeared in the 1995 *Gesneriana* article, and which was based on the original type col-

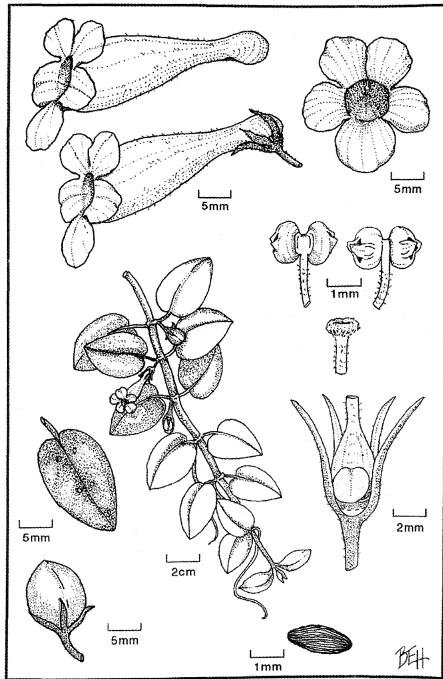


FIGURE 1. *Codonanthe erubescens*. Reprinted from *Gesneriana* 1: 32. 1995.

lection. Wiehler compared *Codonanthe erubescens* in the protologue with *C. crassifolia* (Focke) C.V. Morton, but we find Wiehler's species to be more similar to *C. uleana* Fritsch in having horned anther cells, similar size and coloration of the corolla, and in the indument of the filaments and style. However, *C. uleana* has larger leaves than illustrated for *C. erubescens* and also differs in having leaves with usually an acute leaf base and serrulate to serrate margins. Therefore, for the present, we maintain *C. erubescens* as a separate species.

**Codonanthe luteola** Wiehler, Selbyana 1(2): 159, fig. 1. 1975. **TYPE:** Panama. Panamá: Cerro Jefe, ca. 20 km N of Tocumen airport; near road to Dressler's Orchidarium, 11 Aug. 1971, *H. Wiehler & R.L. Dressler 71184* (PUBLISHED TYPE DISTRIBUTION: Holotype: US; isotypes: B, F, GH, K, MO, NY, P, PMA, SEL, UC).

ACTUAL TYPE DISTRIBUTION: Holotype: US; isotypes: B, F, GH, K, MO, NY, P, PMA, SEL, UC.

**Codonanthe paula** Wiehler, Selbyana 5(2): 215, pl. 1B. 1979. **TYPE:** Type collection made from greenhouse-grown plant cultivated at MSBG, accession no. W-2368, 8 Aug.

1979, *H. Wiehler 79360* (PUBLISHED TYPE DISTRIBUTION: Holotype: SEL; isotypes: F, HB, K, MO, NY, R, RB, SP, US). Origin of cultivated material: Brazil. Nursery outside São Paulo, obtained by Jean Hurlburt of Miami in 1976, and thought to be native to vicinity of São Paulo.

ACTUAL TYPE DISTRIBUTION: Holotype: SEL; isotype: US.

**Codonanthesis peruviana** Wiehler, Selbyana 7(2-4): 346, pl. 5C. 1984. **TYPE:** Type collection made from greenhouse-grown plant cultivated at GRF and MSBG, accession no. W-2235, 29 Jul. 1983, *H. Wiehler 8302* (PUBLISHED TYPE DISTRIBUTION: Holotype: GES; isotypes: GH, K, MO, NY, SEL, US, W). Origin of cultivated material: Peru. Huanuco: Panguana, 1976, *R.L. Dressler s.n.*

ACTUAL TYPE DISTRIBUTION: Holotype: USM; isotypes: CUZ, GH, K, MO, NY, SEL, US, W.

**Columnnea aurantia** Wiehler, Selbyana 5(3-4): 379, pl. 1B. 1981. **TYPE:** Type collection made from greenhouse-grown plant cultivated at MSBG, accession no. W-2443, 15 Jan. 1980, *H. Wiehler 8018* (PUBLISHED TYPE DISTRIBUTION: Holotype: SEL). Origin of cultivated material: Panama. Coclé: About 8 km N of El Copé, May 1977, *R.L. Dressler s.n.*

ACTUAL TYPE DISTRIBUTION: Holotype: SEL; isotypes: AAU, COL, CR, K, L, MO, NY, P, PMA, U, UMICH, UC, US, WAG.

**Columnnea canarina** Wiehler, Selbyana 2(1): 96, pl. 29A. 1977. **TYPE:** Type collection made from greenhouse-grown plant cultivated at MSBG, accession no. W-2264, 2 Jul. 1977, *H. Wiehler 77112* (PUBLISHED TYPE DISTRIBUTION: Holotype: SEL; isotypes: K, MO, NY, PMA, US). Origin of cultivated material: Panama. Chiriquí: near Valle Hornito and Cerro Hornito, Fortuna Dam site; cuttings collected Aug. 1976, *R.L. Dressler s.n.*

ACTUAL TYPE DISTRIBUTION: Holotype: SEL; isotypes: K, MO, NY, PMA, US.

**Columnnea capillosa** L.P. Kvist & L.E. Skog, *Allertonia* 6(5): 349, fig. 3. 1993. **TYPE:** Ecuador. Pastaza: Mera, 22 Apr. 1969, *H. Lugo S. 1158* (Holotype: GB; isotype: SEL).

***Columnnea chiricana*** Wiehler, *Selbyana* 5(1): 77, pl. 2A. 1978. **TYPE:** Panama. Chiriquí: Bajo Grande above Cerro Punto, 23 Dec. 1974, *R.L. Dressler 4906* (PUBLISHED TYPE DISTRIBUTION: Holotype: SEL; isotype: SEL).

ACTUAL TYPE DISTRIBUTION: Holotype: SEL; isotypes: US, PMA (2).

***Columnnea dielsii*** Mansfeld, *Biblioth. Bot.* 116: 145. 1937; neotypified by H. Wiehler in *Selbyana* 5(3–4): 381. 1981. **TYPE:** Ecuador. Carchi: Towards Maldonado, on road from Tulcán, 21 Feb. 1978, *C.A. Luer, J. Luer & A. Hirtz 2663* (Neotype: SEL).

Synonym of *Alloplectus peruviana* (Zahlb.) L.P. Kvist & L.E. Skog, *Allertonia* 6: 395. 1993.

***Columnnea dodsonii*** Wiehler, *Selbyana* 2(1): 70, pl. 20A. 1977. **TYPE:** Type collection made from greenhouse-grown plant cultivated at MSBG, accession no. W-1500, 10 Jun. 1977, *H. Wiehler 77108* (PUBLISHED TYPE DISTRIBUTION: Holotype: SEL; isotypes: B, BH, BM, BR, C, COL, F, G, GH, HBG, K, L, LE, M, MO, NY, P, QCA, RPSC, S, SEL, U, UC, WAG). Origin of cultivated material: Ecuador. Manabí: 15 km W of Santo Domingo on the road to Chone, 23 Jul. 1971, *H. Wiehler & C.H. Dodson 7108*.

ACTUAL TYPE DISTRIBUTION: Holotype: SEL; isotypes: B, BH, BM, BR, C, COL, F, G, GH, HBG, K, L, LE, M, MO, NY, P, QCA, QCNE, RPSC, S, U, UC, WAG.

Synonym of *Columnnea kienastiana* Regel according to L.P. Kvist & L.E. Skog, *Allertonia* 6: 371. 1993.

***Columnnea dressleri*** Wiehler, *Selbyana* 2(1): 98, pl. 29B. 1977. **TYPE:** Panama. Chiriquí: Cerro Fortuna, 16 Aug. 1976, *R.L. Dressler 5400* (PUBLISHED TYPE DISTRIBUTION: Holotype: SEL).

ACTUAL TYPE DISTRIBUTION: Holotype: SEL; isotype: PMA.

***Columnnea filipendula*** Wiehler, *Phytologia* 73(3): 222. 1992 [see also: *Gesneriana* 1: 33, fig. 3. 1995]. **TYPE:** Type collection made from greenhouse-grown plant cultivated at GRF and MSBG, accession no. G-3063, 6 May 1987, *H. Wiehler 87103* (PUBLISHED TYPE DISTRIBUTION: Holotype: GES; isotypes: EAP, F, K, MO, NY, SEL, US). Origin of cultivated material: Honduras: S of Copán; live cuttings collected Jun. 1981, *C. Herzog, s.n.*

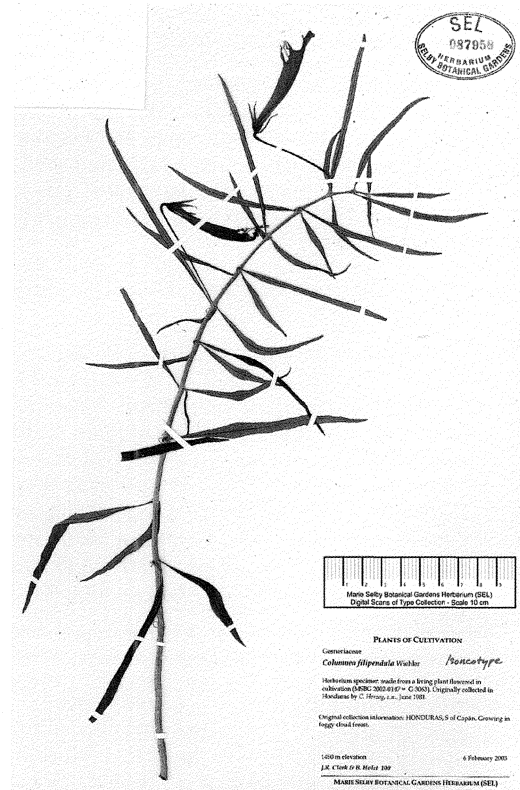


FIGURE 2. *Columnnea filipendula*. Neotype at SEL.

ACTUAL TYPE DISTRIBUTION: NOT FOUND; **NEOTYPE** here designated: Neotype collection made from greenhouse-grown plant cultivated at MSBG, accession no. G-3063, 6 Feb. 2003, *J.R. Clark & B.K. Holst 100* (Neotype: SEL; Isonotypes: COL, EAP, F, K, MO, NY, US). Origin of cultivated material: same wild collection as above.

FIGURE 2. Synonym of *Columnnea rubricaulis* Standley according to L.E. Skog & L.P. Kvist, *Novon* 7: 414. 1997.

None of the type specimens of *Columnnea filipendula* cited in the original publication were found nor were the specimens cited in the subsequent *Gesneriana* article. Fortunately, clonotype material of G-3063 is still growing at MSBG, and from which specimens were gathered and designated as the neotype collection.

***Columnnea fimbriicalyx*** L.P. Kvist & L.E. Skog, *Allertonia* 6(5): 373, fig. 9. 1993. **TYPE:** Ecuador. Carchi: Trail between San Marcos and San Antonio located along trail before Gualpi Bajo, 25 Nov. 1983, *L.P. Kvist, A.*

*Barfod & D. Nissen 48971* (Holotype: AAU; isotypes: QCA, QCNE, SEL, US).

***Columnnea gallicauda*** Wiehler, *Selbyana* 2(1): 99, pl. 29C. 1977. **TYPE:** Panama. Veraguas: 12–15 km NW of Santa Fé, between third branch of Río Santa María and continental divide, 29–30 Mar. 1975, *R.L. Dressler 5000* (PUBLISHED TYPE DISTRIBUTION: Holotype: SEL).

ACTUAL TYPE DISTRIBUTION: Holotype: SEL, isotypes: PMA (2), US.

***Columnnea glicensteinii*** Wiehler, *Phytologia* 73(3): 223. 1992 [see also: *Gesneriana* 1: 35, fig. 4. 1995]. **TYPE:** Type collection made from greenhouse-grown plant cultivated at GRF, accession no. W-2674, 8 Jun. 1979, *H. Wiehler 8401* (PUBLISHED TYPE DISTRIBUTION: Holotype: GES; isotypes: CR, K, NY, SEL, US). Origin of cultivated material: Costa Rica. Type locality and habitat not specified, 1987, *L. Glicenstein 13*.

ACTUAL TYPE DISTRIBUTION: Holotype: CR; isotypes: SEL, K, NY, US.

***Columnnea hiantiflora*** Wiehler, *Selbyana* 2(1): 100, pl. 29D. 1977. **TYPE:** Panama. Chiriquí: Near Valle Hornito and Cerro Hornito, Fortuna Dam site, 24 Sep. 1976, *R.L. Dressler 5445* [published as "5443"] (PUBLISHED TYPE DISTRIBUTION: Holotype: SEL).

ACTUAL TYPE DISTRIBUTION: Holotype: SEL; isotype: PMA.

***Columnnea laevis*** L.P. Kvist & L.E. Skog, *Allertonia* 6(5): 376, fig. 10. 1993. **TYPE:** Ecuador. Carchi: Above San Marcos de los Coaquiéres on trail towards Gualpi Bajo, 7 Feb. 1985, *B. Øllgaard et al. 57367* (Holotype: AAU; isotypes: COL, G, GB, MO, NY, QCA, QCNE, SEL, US).

***Columnnea minutiflora*** L.P. Kvist & L.E. Skog, *Allertonia* 6(5): 379. 1993. **TYPE:** Ecuador. Carchi: 12 km W of Maldonado, Chical, wet montane forest along Río San Juan, 29 May 1978, *M.T. Madison et al. 4755* (Holotype: AAU; isotypes: F, SEL).

***Columnnea ovatifolia*** L.P. Kvist & L.E. Skog, *Allertonia* 6(5): 393, fig. 14. 1993. **TYPE:** Ecuador. Carchi: Campamento Machines, road Tulcán-Maldonado, ca. 10 km SE of Maldonado, 28 Nov. 1974, *G. Harling & L. Andersson 12316* (Holotype: GB; isotype: SEL).

***Columnnea purpurimarginata*** L.P. Kvist & L.E. Skog, *Allertonia* 6(5): 365, fig. 8. 1993. **TYPE:** Ecuador. Esmeraldas: Environs of

Lita on the Ibarra-San Lorenzo RR, Jun. 1978, *M.T. Madison et al. 5000* (Holotype: SEL).

***Columnnea zebranelle*** Wiehler, *Selbyana* 5(1): 80, pl. 2B. 1978. **TYPE:** Type collection made from greenhouse-grown plant cultivated at MSBG, accession no. W-1595, 25 Aug. 1978, *H. Wiehler 78133* (PUBLISHED TYPE DISTRIBUTION: Holotype: SEL; isotypes: BH, F, K, MO, NY, PMA, SEL, U, US). Origin of cultivated material: Panama. Panamá: Cerro Jefe, 11 Aug. 1971, *H. Wiehler & R.L. Dressler 71186B*.

ACTUAL TYPE DISTRIBUTION: Holotype: SEL; isotypes: B, COL, CR, GH, MO, NY, P, PMA, US, WAG.

***Corytoplectus cutucuensis*** Wiehler, *Gesneriana* 1: 35, fig. 5. 1995. **TYPE:** Type collection made from greenhouse-grown plant cultivated at MSBG & GRF, accession no. G-2412, 8 Jul. 1984, *H. Wiehler 8406* (PUBLISHED TYPE DISTRIBUTION: Holotype: GES). Origin of cultivated material: Ecuador. Morona-Santiago: Cordillera de Cutucu, W slope, along trail from Logrono to Yaupi, Nov. 1976, *M.T. Madison et al. s.n.*

ACTUAL TYPE DISTRIBUTION: Holotype: QCA; isotype: SEL.

***Cremosperma maculatum*** L.E. Skog, *Brittonia* 30: 320. 1978. **TYPE:** Panama. Chiriquí: N of San Felix at Chiriquí-Bocas del Toro border, on Cerro Colorado copper mine road along continental divide, 4 May 1975, *S. Mori & J. Kallunki 5828* (Holotype: US; isotypes: MO, SEL).

***Cremosperma occidentale*** Wiehler, *Selbyana* 5(1): 74, pl. 1C. 1978. **TYPE:** Panama. Chiriquí: Trocha 3 de Noviembre, between Alto de Guayabo and Paso de la Zorra, 25 Sep. 1976, *R.L. Dressler 5475* (PUBLISHED TYPE DISTRIBUTION: Holotype: SEL).

ACTUAL TYPE DISTRIBUTION: Holotype: SEL.

***Cremosperma veraguanum*** Wiehler, *Selbyana* 5(1): 76, pl. 1D ('veraquense'). 1978. **TYPE:** Panama. Veraguas: About 8 km NW of Santa Fé, along first branch of Río Santa María, 2.7 km from Escuela Agrícola Alto Piedra, 18 May 1975, *R.L. Dressler 5034* (PUBLISHED TYPE DISTRIBUTION: Holotype: SEL).

ACTUAL TYPE DISTRIBUTION: Holotype: SEL.

***Dalbergaria ampliata*** Wiehler, *Selbyana* 2(1): 101, pl. 30A. 1977. **TYPE:** Panama. Veraguas: Buenos Aires, N slope of ridge E of Cerro Tute, NW of Santa Fé, 24 Dec. 1976,

- R.L. Dressler 5543* (PUBLISHED TYPE DISTRIBUTION: Holotype: SEL).
- ACTUAL TYPE DISTRIBUTION: Holotype: SEL.  
Basionym of *Columnnea ampliata* (Wiehler) L.E. Skog, Ann. Missouri Bot. Gard.: 844. 1978.
- Dalbergaria asteroloma** Wiehler, Selbyana 2(1): 70, pl. 20B. 1977. **TYPE:** Type collection made from greenhouse-grown plant cultivated at MSBG, accession no. W-2247, 10 Jun. 1977, *H. Wiehler 77109* (PUBLISHED TYPE DISTRIBUTION: Holotype: SEL; isotypes: K, QCA, RPSC, US). Origin of cultivated material: Ecuador. Pichincha: Montañas de Ila, at km 12 on road from Patricia Pilar to village of 24 de Mayo, 30 May 1976, *R.L. Dressler 6100*.
- ACTUAL TYPE DISTRIBUTION: Holotype: SEL; isotypes: AAU, GH, K, MO, NY, P, QCA, RPSC, U, US.  
Basionym of *Columnnea asteroloma* (Wiehler) L.E. Skog, Taxon 30: 506. 1981.
- Dalbergaria eburnea** Wiehler, Selbyana 5(3-4): 378, pl. 1A. 1981. **TYPE:** Ecuador. Pichincha: Old road Quito-Santo Domingo, below Chiriboga, 27 Apr. 1979, *H. Wiehler & D. Masterson 79108* (PUBLISHED TYPE DISTRIBUTION: Holotype: SEL; isotype: SEL).
- ACTUAL TYPE DISTRIBUTION: Holotype: SEL; isotype: QCA.  
Basionym of *Columnnea eburnea* (Wiehler) L.P. Kvist & L.E. Skog, Allertonia 6: 354. 1993.
- Dalbergaria evolvens** Wiehler, Phytologia 73(3): 223. 1992 [see also: Gesneriana 1: 37, fig. 6. 1995]. **TYPE:** Type collection made from greenhouse-grown plant cultivated at GRF, accession no. G-2757, 8 Jun. 1984, *H. Wiehler 8403* (PUBLISHED TYPE DISTRIBUTION: Holotype: GES; isotypes: QCA, K, MO, NY, S, SEL, US). Origin of cultivated material: Ecuador. Napo: km 71 on road from Baeza to Lago Agrio, 4 May 1979, *H. Wiehler & D. Masterson 79304*.
- ACTUAL TYPE DISTRIBUTION: Holotype: QCA; isotypes: K, MO, NY, SEL, US.  
Synonym of *Columnnea guttata* Poeppig according to L.E. Skog & L.P. Kvist, Novon 7: 415. 1997.
- Dalbergaria filifera** Wiehler, Phytologia 73(3): 224. 1992 [see also: Gesneriana 1: 39. 1995]. **TYPE:** Ecuador. Esmeraldas: near new road from Lita and Alto Tambo towards San Lorenzo, about 20 km W of Alto Tambo, on the Chocó Escarpment, 22 Apr. 1990, *H. Wiehler & GRF Expedition 9033* (PUBLISHED TYPE DISTRIBUTION: Holotype: GES; isotypes: QCA, US).
- ACTUAL TYPE DISTRIBUTION: Holotype: QCA; isotypes: SEL, US.  
Basionym of *Columnnea filifera* (Wiehler) L.E. Skog & L.P. Kvist, Novon 7: 413. 1997.
- Dalbergaria madisonii** Wiehler, Selbyana 5(1): 90, pl. 4C. 1978. **TYPE:** Type collection made from greenhouse-grown plant cultivated at MSBG, accession no. W-2420, 30 Aug. 1977, *H. Wiehler 77133* [holotype erroneously has "79133"] (PUBLISHED TYPE DISTRIBUTION: Holotype: SEL; isotypes: AAU, F, K, NY, QCA, S, US). Origin of cultivated material: Ecuador. Morona-Santiago: Cordillera de Cutucú, 25 km SE of Logroño, Nov. 1976, *M.T. Madison et al. s.n.*
- ACTUAL TYPE DISTRIBUTION: Holotype: SEL; isotypes: F, GH, MO, NY, P, QCA, U, US.  
Synonym of *Columnnea guttata* Poeppig according to L.P. Kvist & L.E. Skog, Allertonia 6: 361. 1993.
- Dalbergaria mastersonii** Wiehler, Phytologia 73(3): 225. 1992 [see also: Gesneriana 1: 43, fig. 7. 1995]. **TYPE:** Ecuador. Pichincha: Tandapi, near village of Cornejo Astorga (Tandapi), about 1.5 km from bridge over Río Pilatón, 24 Apr. 1979, *H. Wiehler & D. Masterson 7968* (PUBLISHED TYPE DISTRIBUTION: Holotype: GES; isotypes: QCA, NY, US, U, SEL).
- ACTUAL TYPE DISTRIBUTION: Holotype: QCA; isotypes: SEL, U, US.  
Basionym of *Columnnea mastersonii* (Wiehler) L.E. Skog & L.P. Kvist, Novon 7: 414. 1997.
- Dalbergaria medicinalis** Wiehler, Phytologia 73(3): 226. 1992 [see also: Gesneriana 1: 45, fig. 8. 1995]. **TYPE:** Ecuador. Pichincha: Above Chiriboga on old road from Quito to Santo Domingo, 26 Apr. 1988, *H. Wiehler & GRF Expedition 88215* (PUBLISHED TYPE DISTRIBUTION: Holotype: GES; isotypes: QCA, K, MO, NY, SEL, US).
- ACTUAL TYPE DISTRIBUTION: Holotype: QCA; isotypes: COL, K, MO, NY, SEL, US.  
Basionym of *Columnnea medicinalis* (Wiehler) L.E. Skog & L.P. Kvist, Novon 7: 414. 1997.
- Dalbergaria ornata** Wiehler, Phytologia 73(3): 227. 1992 [see also: Gesneriana 1: 47, fig. 9. 1995]. **TYPE:** Type collection made from

greenhouse-grown plant cultivated at GRF, accession no. G-2665, 8 May 1987, *H. Wiehler 87105* (PUBLISHED TYPE DISTRIBUTION: Holotype: GES; isotypes: CR, SEL). Origin of cultivated material: Costa Rica. San José: about 30 km SW of San José along Río Negro, Jan. 1979, *J. Hall s.n.*

ACTUAL TYPE DISTRIBUTION: Holotype: CR; isotypes: SEL, US.

Basionym of *Columnnea ornata* (Wiehler) L.E. Skog & L.P. Kvist, *Novon* 7: 414. 1997.

**Dalbergaria polyantha** Wiehler, *Selbyana* 2(1): 102, pl. 30B. 1977. **TYPE:** Type collection made from greenhouse-grown plant cultivated at MSBG, accession no. W-1152, 26 Jun. 1974, *H. Wiehler 7424* (PUBLISHED TYPE DISTRIBUTION: Holotype: SEL; isotypes: CR, K, MO, NY, PMA, US). Origin of cultivated material: Panama. Chiriquí: Vicinity of Barriles, 6–16 km S of Volcán, 25 Apr. 1971, *R.L. Dressler & N.H. Williams 3987*.

ACTUAL TYPE DISTRIBUTION: Holotype: SEL; isotypes: CR, K, MO, NY, PMA, SEL, U, UC, US.

Basionym of *Columnnea polyantha* (Wiehler) L.E. Skog, *Ann. Missouri Bot. Gard.*: 878. 1979.

**Dalbergaria puyana** Wiehler, *Selbyana* 2(1): 104, pl. 30C. 1977. **TYPE:** Type collection made from greenhouse-grown plant cultivated at MSBG, accession no. W-2040, 7 Jul. 1977, *H. Wiehler 77117* (PUBLISHED TYPE DISTRIBUTION: Holotype: SEL; isotypes: K, NY, QCA, S, U, US). Origin of cultivated material: Ecuador. Pastaza: rainforest outside Puyo at Río Pindo Grande; cuttings collected in Dec. 1975, *R.L. Dressler et al. s.n.*

ACTUAL TYPE DISTRIBUTION: Holotype: SEL; isotypes: NY, QCA, U, US.

Synonym of *Columnnea guttata* Poeppig according to L.P. Kvist & L.E. Skog, *Allertonia* 6: 361. 1993.

**Dalbergaria robusta** Wiehler, *Gesneriana* 1: 48. 1995. **TYPE:** Type collection made from greenhouse-grown plant cultivated at GRF, accession no. G-3278, 15 Oct. 1988, *H. Wiehler 88241* (PUBLISHED TYPE DISTRIBUTION: Holotype: HUA; isotypes: COL, GES, MO, NY, US). Origin of cultivated material: Colombia. Chocó: road from Bolívar to Quibdo; found in middle of road, complete specimen not seen in natural habitat; 14 Mar. 1987, *H. Wiehler & GRF Expedition 8713A*.

ACTUAL TYPE DISTRIBUTION: NOT FOUND; **LECTOTYPE** here designated: Wild collection cited above, *H. Wiehler & GRF Expedition 8713A* (Lectotype: SEL).

= *Columnnea robusta* (Wiehler) L.E. Skog, **comb. nov.** (basionym: *Dalbergaria robusta* Wiehler, *Gesneriana* 1:48. 1995).

No examples of the type specimens were found; however, a specimen was found of the wild collection that was the origin of the cultivated material. This collection from the wild is here designated the lectotype.

**Dalbergaria rubriacuta** Wiehler, *Selbyana* 2(1): 72, pl. 20D. 1977. **TYPE:** Ecuador. Los Ríos: Río Palenque Science Center, km 56 between Quevedo and Santo Domingo, 19 Jul. 1971, *H. Wiehler & C.H. Dodson 7102* (PUBLISHED TYPE DISTRIBUTION: Holotype: SEL; isotypes: K, NY, QCA, S, US).

ACTUAL TYPE DISTRIBUTION: Holotype: SEL. Basionym of *Columnnea rubriacuta* (Wiehler) L.P. Kvist & L.E. Skog, *Allertonia* 6: 367. 1993.

**Dalbergaria tutunendana** Wiehler, *Phytologia* 73(3): 228. 1992 [see also: *Gesneriana* 1: 49. 1995]. **TYPE:** Colombia. Chocó: E of Tutunendo, on road Quibdo to Bolívar, Alto de Veinte, hacienda of Ruben Jaramillo, 15 Mar. 1987, *H. Wiehler & GRF Expedition 8722* (PUBLISHED TYPE DISTRIBUTION: Holotype: HUA; isotypes: COL, GES, US).

ACTUAL TYPE DISTRIBUTION: Holotype: HUA; isotypes: COL, SEL, US.

= *Columnnea tutunendana* (Wiehler) L.E. Skog, **comb. nov.** (basionym: *Dalbergaria tutunendana* Wiehler, *Phytologia* 73(3): 228. 1992).

**Dalbergaria variabilis** Wiehler, *Gesneriana* 1: 51, fig. 10. 1995. **TYPE:** Ecuador. Esmeraldas: vicinity of Lita, half-way between Alto Tambo and Escarpment, along roadside cuts, 23 Apr. 1995, *H. Wiehler & GRF Expedition 9544* (PUBLISHED TYPE DISTRIBUTION: Holotype: QCNE; isotypes: GES, K, MO, QCA, US).

ACTUAL TYPE DISTRIBUTION: Holotype: QCNE; isotypes: K, MO, QCA, SEL, US.

Synonym of *Columnnea rubriacuta* (Wiehler) L.P. Kvist & L.E. Skog according to L.E. Skog & L.P. Kvist, *Novon* 7: 415. 1997.

**Dalbergaria vittata** Wiehler, *Selbyana* 2(1): 104, pl. 30D. 1977. **TYPE:** Type collection made from greenhouse-grown plant cultivated at MSBG, accession no. W-2265, 8 Jul. 1977, *H. Wiehler 77118* (PUBLISHED



- TYPE DISTRIBUTION: Holotype: SEL; isotypes: K, MO, NY, PMA, U, US). Origin of cultivated material: Panama. Chiriquí: Valle Hornito, near Cerro Hornito, Fortuna Dam site, 12 Aug. 1976, *Dressler 5324*.
- ACTUAL TYPE DISTRIBUTION: Holotype: SEL.
- Basionym of *Columnnea vittata* (Wiehler) L.E. Skog, *Ann. Missouri Bot. Gard.* 65: 886. [1978] 1979.
- Drymonia aciculata** Wiehler, *Selbyana* 2(1): 105, pl. 31A. 1977. **TYPE:** Panama. Panamá: Cerro Jefe, 11 Aug. 1971, *H. Wiehler & R.L. Dressler 71189* (PUBLISHED TYPE DISTRIBUTION: Holotype: SEL; isotypes: K, MO, NY, PMA, US).
- ACTUAL TYPE DISTRIBUTION: Holotype: SEL; isotypes: MO, NY, PMA.
- Drymonia brochidodroma** Wiehler, *Gesneriana* 1: 53, fig. 11. 1995. **TYPE:** Colombia. Nariño: around La Planada above Ricaurte, 2 Nov. 1979, *C.A. Luer et al. 4566* (PUBLISHED TYPE DISTRIBUTION: Holotype: SEL).
- ACTUAL TYPE DISTRIBUTION: Holotype: SEL.
- Drymonia chiribogana** Wiehler, *Phytologia* 73(3): 229. 1992 [see also: *Gesneriana* 1: 55, fig. 12. 1995]. **TYPE:** Ecuador. Pichincha: old road from Quito to Santo Domingo, near Chiriboga, 26 Apr. 1988, *H. Wiehler & GRF Expedition 88222* (PUBLISHED TYPE DISTRIBUTION: Holotype: GES; isotypes: QCA, K, NY, US).
- ACTUAL TYPE DISTRIBUTION: Holotype: QCA; isotypes: SEL, K, NY, US.
- Drymonia dressleri** Wiehler, *Selbyana* 5(1): 80, pl. 2C. 1978. **TYPE:** Panama: Panamá: El Llano-Cartí highway 10–12 km N of El Llano, 2 Mar. 1974, *R.L. Dressler 4619* (PUBLISHED TYPE DISTRIBUTION: Holotype: SEL).
- ACTUAL TYPE DISTRIBUTION: Holotype: SEL; isotype: US.
- Drymonia ecuadorensis** Wiehler, *Selbyana* 2(1): 74, pl. 22A. 1977. **TYPE:** Ecuador. Los Ríos: Río Palenque Science Center, km 56 between Quevedo and Santo Domingo, 19 Jul. 1971, *H. Wiehler [& C.H. Dodson] 7106* (PUBLISHED TYPE DISTRIBUTION: Holotype: SEL; isotypes: K, NY, QCA, S, US).
- ACTUAL TYPE DISTRIBUTION: Holotype: SEL; isotype: US.
- Drymonia killipii** Wiehler, *Selbyana* 2(1): 106, pl. 31B. 1977. **TYPE:** Colombia. El Valle: old road from Cali to Buenaventura, near Río Sabaletas, on path above creek, 2 May 1972, *H. Wiehler et al. 72142* (PUBLISHED TYPE DISTRIBUTION: Holotype: SEL; isotypes: COL, K, MO, NY, US).
- ACTUAL TYPE DISTRIBUTION: Holotype: SEL; isotypes: COL, MO.
- Drymonia laciniosa** Wiehler, *Selbyana* 2(1): 76, pl. 22B. 1977. **TYPE:** Ecuador. Los Ríos: Río Palenque Science Center, km 56 between Quevedo and Santo Domingo, 24 Jul. 1971, *H. Wiehler & C.H. Dodson 71309* (PUBLISHED TYPE DISTRIBUTION: Holotype: SEL; isotypes: K, NY, QCA, S, US).
- ACTUAL TYPE DISTRIBUTION: NOT FOUND; **LECTOTYPE** here designated: Ecuador. Los Ríos: Río Palenque Biological Station, km 56 between Quevedo and Santo Domingo, 3 Sep. 1972, *C.H. Dodson & M. McMahon 5054* (Lectotype: SEL).
- No examples of type material of *Drymonia laciniosa* were found. We have selected as lectotype the only other collection cited in the protologue.
- Drymonia microphylla** Wiehler, *Selbyana* 5(1): 81, pl. 2D. 1978. **TYPE:** Panama. Panamá: between Cerro Azul and Cerro Jefe, 28 Aug. 1971, *R.L. Dressler 4093* (PUBLISHED TYPE DISTRIBUTION: Holotype: SEL; isotypes: PMA, US).
- ACTUAL TYPE DISTRIBUTION: Holotype: SEL; isotype: PMA.
- Drymonia pilifera** Wiehler, *Selbyana* 5(1): 82. 1978. **TYPE:** Type collection made from greenhouse-grown plant cultivated at MSBG, accession no. W-2008, 29 Oct. 1975, *H. Wiehler 75272* (PUBLISHED TYPE DISTRIBUTION: Holotype: SEL; isotypes: BH, F, K, MO, NY, PMA, SEL, U, UC, US). Origin of cultivated material: Panama. Veraguas: Guabal (Río Dos Bocas), about 16 km NW of Santa Fé, 1974, *R.L. Dressler 4786*.
- ACTUAL TYPE DISTRIBUTION: Holotype: SEL; isotypes: BH, CR, F, K, MO, NY, PMA, U, UC, US.
- Drymonia pulchra** Wiehler, *Selbyana* 2(1): 109, pl. 31C. 1977. **TYPE:** Ecuador. Pastaza: Puyo, rainforest near Río Pindo Grande, 3 km outside of village, 30 Jul. 1971, *H. Wiehler 7167* (PUBLISHED TYPE DISTRIBUTION: Holotype: SEL; isotypes: BH, K, MO, NY, P, QCA, S, U, US).
- ACTUAL TYPE DISTRIBUTION: Holotype: SEL.
- Drymonia punctulata** Wiehler, *Phytologia* 73(3): 230. 1992 [see also: *Gesneriana* 1:

57, fig. 14. 1995]. **TYPE:** Type collection made from greenhouse-grown plant cultivated at GRF, accession no. G-3548, 31 Aug. 1992, *H. Wiehler 9206* (PUBLISHED TYPE DISTRIBUTION: Holotype: GES; isotypes: QCA, MO, NY, SEL, US). Origin of cultivated material: Ecuador. El Oro: road from Buena Vista to Paccha, at km 32, 16 Apr. 1989, *Williams et al. s.n.*

ACTUAL TYPE DISTRIBUTION: NOT FOUND; **LECTOTYPE** here designated: Wild collection cited above, *N.H. Williams et al. s.n.* (Lectotype: SEL).

None of the type specimens were found, thus we have selected as lectotype the collection from the wild that is the source of the greenhouse-grown plants.

**Drymonia rhodoloma** Wiehler, *Selbyana* 2(1): 77, pl. 22D. 1977. **TYPE:** Ecuador. Los Ríos: Río Palenque Science Center, km 56 Quevedo-Santo Domingo, 24 Jul. 1971, *H. Wiehler & C.H. Dodson 71311* (PUBLISHED TYPE DISTRIBUTION: Holotype: SEL; isotypes: K, NY, QCA, S, US).

ACTUAL TYPE DISTRIBUTION: Holotype: SEL; isotypes: K, NY, QCA, S, US.

**Drymonia sulphurea** Wiehler, *Selbyana* 2(1): 109, pl. 31D. 1977. **TYPE:** Panama. Panamá: Cerro Jefe, 11 Aug. 1972, *H. Wiehler & R.L. Dressler 71213* (PUBLISHED TYPE DISTRIBUTION: Holotype: SEL; isotypes: K, MO, NY, PMA, US).

ACTUAL TYPE DISTRIBUTION: Holotype: SEL; isotype: PMA.

**Drymonia uninerva** Wiehler, *Phytologia* 73(3): 231. 1992 [see also: *Gesneriana* 1: 59, fig. 14. 1995]. **TYPE:** Type collection made from greenhouse-grown plant cultivated at Cornell University and GRF, accession no. G-796, 28 Apr. 1973, *H. Wiehler 7327* (PUBLISHED TYPE DISTRIBUTION: Holotype: GES; isotypes: B, CR, F, G, GH, K, L, M, MO, NY, P, SEL, U, UC, US, W). Origin of type material: Costa Rica. Locality not specified; collected in 1960, *E.J. Alexander s.n.*

ACTUAL TYPE DISTRIBUTION: Holotype: SEL.

**Drymonia urceolata** Wiehler, *Selbyana* 5(1): 85, pl. 3B. 1978, based on *Hypocyrta macrophylla* Poeppig, in Poeppig & Endlicher, *Nov. Gen. Sp. Pl.* 3: 3. 1840, not *Drymonia macrophylla* (Oersted) H.E. Moore, *Baileya* 3(3): 109. 1955. **TYPE:** Peru. Cuchero, *Poeppig 1056* (Holotype: W; isotype: W).

Wiehler cited a type, *Wiehler 7162* (SEL), for his replacement name, *Drymonia urceolata*, perhaps because he could not locate the Poeppig type at W, and may have assumed it was lost. However, the Poeppig type specimens were merely on loan and a replacement type was unnecessary. Following ICBN Article 7.3 (Greuter et al. 2000), *Poeppig 1056* becomes the type of the new name for the taxon.

**Gasteranthus atratus** Wiehler, *Selbyana* 5(1): 86, pl. 3C. 1978. **TYPE:** Type collection made from greenhouse-grown plant cultivated at MSBG, accession no. W-2480, 16 Nov. 1978, *H. Wiehler 78166* (PUBLISHED TYPE DISTRIBUTION: Holotype: SEL; isotypes: AAU, BH, F, K, NY, QCA, S, U, US). Origin of cultivated material: Ecuador. Pichincha: Montañas de Ila, near La Centinella at km 12 on road from Patricia Pilar to Flor de Mayo, Apr. 1977, *M.T. Madison s.n.*

ACTUAL TYPE DISTRIBUTION: Holotype: QCA; isotypes: AAU, BH, F, K, NY, S, SEL, U, US.

Skog and Kvist (2000) lectotypified *Gasteranthus atratus* because, at the time, the type specimen, *Wiehler 78166*, could not be found at SEL and was presumed lost (see L.E. Skog & L.P. Kvist, *Syst. Bot. Monogr.* 59: 40. 2000). Fortunately, the types were located when the Wiehler collections at GRF were donated to MSBG. Thus, the lectotypification is unnecessary and is here nullified.

**Gasteranthus atrolimbus** M. Freiberg, *Brittonia* 52(2): 205, fig. 2. 2000. **TYPE:** Ecuador. Cotopaxi; on border of Bosque Protector Otanga, 30 Sep. 1998, *M. Freiberg 98096* (PUBLISHED TYPE DISTRIBUTION: Holotype: QCA; isotypes: GES, QCNE, ULM).

ACTUAL TYPE DISTRIBUTION: Holotype: QCA; isotypes: QCNE, SEL, ULM.

**Gasteranthus aurantiacus** M. Freiberg, *Brittonia* 52(2): 203, fig. 1. 2000. **TYPE:** Ecuador. Cotopaxi; on border of Bosque Protector Otanga, 30 Sep. 1998, *M. Freiberg 98095* (PUBLISHED TYPE DISTRIBUTION: Holotype: QCA; isotypes: GES, QCNE, ULM).

ACTUAL TYPE DISTRIBUTION: Holotype: QCA; isotypes: QCNE, SEL, ULM.

**Gasteranthus bilsaensis** L.E. Skog & L.P. Kvist, *Syst. Bot. Monogr.* 59: 41, fig. 17. 2000. **TYPE:** Ecuador. Esmeraldas: Bilsa Bi-

ological Station, Rana Roja Trail, 25 Oct. 1995, *P. Mendoza-T., J.L. Clark, L.P. Kvist & L.E. Skog 561* (Holotype: QCNE; isotypes: AAU, COL, QCA, SEL, US).

**Gasteranthus carinatus** Wiehler, *Selbyana* 2(1): 77, pl. 23D. 1977. **TYPE:** Ecuador. Los Ríos: Montañas de Ila, 12 km E of Río Palenque Science Center, 9 Apr. 1977, *M.T. Madison 3802* (PUBLISHED TYPE DISTRIBUTION: Holotype: SEL).

ACTUAL TYPE DISTRIBUTION: Holotype: SEL.

**Gasteranthus dressleri** Wiehler, *Selbyana* 2(1): 127, pl. 35C. 1977. **TYPE:** Panama. Colón; about 1–2 km upstream from bridge and road to Portobelo on Río Gaunche, 10 Aug. 1971, *H. Wiehler & R.L. Dressler 71165* (PUBLISHED TYPE DISTRIBUTION: Holotype: SEL).

ACTUAL TYPE DISTRIBUTION: Holotype: SEL; isotype: US.

**Gasteranthus extinctus** L.E. Skog & L.P. Kvist, *Syst. Bot. Monogr.* 59: 65, fig. 26. 2000. **TYPE:** Ecuador. Los Ríos or Pichincha: Montañas de Ila, near La Centinela, km 12, on road from Patricia Pilar to Flor de Mayo, 4 Oct. 1981, *C.H. Dodson 11595* (Holotype: QCNE; isotypes: MO, Q, SEL).

**Gasteranthus glaber** L.E. Skog & L.P. Kvist, *Syst. Bot. Monogr.* 59: 67, fig. 27. 2000. **TYPE:** Ecuador. Pichincha; old Quito-Santo Domingo road (between new road and Chiriboga), 28 Oct. 1995, *P. Mendoza-T., J.L. Clark, L.P. Kvist & L.E. Skog 624* (Holotype: QCNE; isotypes: AAU, B, BM, CAS, COL, E, F, GB, GH, HUA, LE, MO, NY, P, PE, QCA, S, SEL, TULV, US, VEN, WU).

**Gasteranthus macrocalyx** Wiehler, *Selbyana* 2(1): 78, pl. 24B. 1977. **TYPE:** Ecuador. Los Ríos: Montañas de Ila, 12 km E of Patricia Pilar and Río Palenque Science Center, 9 Apr. 1977, *M.T. Madison 3806* (PUBLISHED TYPE DISTRIBUTION: Holotype: SEL).

ACTUAL TYPE DISTRIBUTION: Holotype: SEL.

**Gasteranthus maculatus** Wiehler, *Selbyana* 5(1): 87, pl. 3D. 1978. **TYPE:** Type collection made from greenhouse-grown plant cultivated at MSBG, accession no. W-2454, 16 Nov. 1978, *H. Wiehler 78167* (PUBLISHED TYPE DISTRIBUTION: Holotype: SEL; isotypes: K, MO, PMA, US). Origin of cultivated material: Panama. Darién: Cerro Pirre, E side of ridge, Jul. 1977, *R.L. Dressler s.n.*

ACTUAL TYPE DISTRIBUTION: Holotype: SEL; isotypes: COL, K, MO, PMA, US.

Synonym of *Gasteranthus delphinoides* (Seemann) Wiehler, according to L.E. Skog & L.P. Kvist, *Syst. Bot. Monogr.* 59: 59. 2000.

**Gasteranthus orientandinus** L.E. Skog & L.P. Kvist, *Syst. Bot. Monogr.* 59: 82, fig. 32. 2000. **TYPE:** Ecuador. Morona-Santiago: Río Paute, 2–3 km W of Mendez, 13 Dec. 1944, *W.H. Camp E-1492* (Holotype: QCA; isotypes: NY, S, SEL, US).

**Gasteranthus recurvatus** L.E. Skog & L.P. Kvist, *Syst. Bot. Monogr.* 59: 93, fig. 36. 2000. **TYPE:** Colombia. Valle del Cauca: trail from Campoalegre into area controlled by Corporación Valle del Cauca, 16 Feb. 1989, *J.F. Smith, R. Bernal, X. Londoño & W. Devia 1314* (Holotype: COL; isotypes: SEL, TULV, US, WIS).

**Gasteranthus ternatus** L.E. Skog & L.P. Kvist, *Syst. Bot. Monogr.* 59: 98. 2000. **TYPE:** Ecuador. Pichincha: Old Quito-Santo Domingo road, above Chiriboga, 28 Oct. 1995, *P. Mendoza-T. et al. 623* (Holotype: QCNE; isotypes: AAU, B, COL, GB, K, MO, NY, QCA, SEL, US).

**Gloxinia dodsonii** Wiehler, *Selbyana* 2(1): 80, pl. 24D. 1977. **TYPE:** Ecuador. Pichincha: along Río Baba (=Río Quevedo), 28 km S of Santo Domingo de los Colorados, 3 Nov. 1961, *C.H. Dodson & L.B. Thien 1173* (PUBLISHED TYPE DISTRIBUTION: Holotype: SEL; isotypes: BH, K, US, WIS).

ACTUAL TYPE DISTRIBUTION: Holotype: SEL; isotypes: BH, BUS, K, US, WIS.

**Monopyle grandiflora** Wiehler, *Selbyana* 5(1): 88, pl. 4A. 1978. **TYPE:** Type collection made from greenhouse-grown plant cultivated at MSBG, accession no. W-2455, 21 Nov. 1978, *H. Wiehler 78168* (PUBLISHED TYPE DISTRIBUTION: Holotype: SEL; isotypes: K, MO, NY, PMA, US). Origin of cultivated material: Panama. Darién: Cerro Pirre, Jul. 1977, *R.L. Dressler 5670*.

ACTUAL TYPE DISTRIBUTION: Holotype: SEL; isotypes: CR, K, MO, NY, PMA, US.

**Napeanthus bullatus** Wiehler, *Selbyana* 2(1): 110, pl. 32A. 1977. **TYPE:** Panama. Panamá: Canal Zone, on steep banks near Río Agua Salud, Navy reservation N of Gamboa, 11 Sep. 1971, *R.L. Dressler 4098* (PUBLISHED TYPE DISTRIBUTION: Holotype: SEL; isotypes: F, K, MO, NY, PMA, US).

ACTUAL TYPE DISTRIBUTION: Holotype: SEL; isotypes: COL, CR, F, K, MO, NY, PMA, US.

- Synonym of *Napeanthus apodemus* J.D. Smith according to L.E. Skog, *Ann. Missouri Bot. Gard.* 65: 952. [1978] 1979.
- Napeanthus costaricensis** Wiehler, *Selbyana* 2(1): 112, pl. 32B. 1977. **TYPE:** Type collection made from greenhouse-grown plant cultivated at MSBG, accession no. W-1701, 12 Jul. 1977, *H. Wiehler 77119* (PUBLISHED TYPE DISTRIBUTION: Holotype: SEL; isotypes: CR, K, MO, NY, US). Origin of cultivated material: Costa Rica. San José: near San Cristóbal, ca. 19.4 km SW of San Isidro, 4 Mar. 1972, *R.L. Dressler & R. Andrews 4168*.
- ACTUAL TYPE DISTRIBUTION: Holotype: SEL; isotypes: CR, K, MO, NY, US.
- Nautilocalyx antioquiensis** Wiehler, *Gesneriana* 1: 63, fig. 16. 1995. **TYPE:** Type collection made from greenhouse-grown plant cultivated at GRF, accession no. G-3217, 18 Oct. 1988, *H. Wiehler 88242* (PUBLISHED TYPE DISTRIBUTION: Holotype: COL; isotypes: GES, HUA, K, NY, US). Origin of cultivated material: Colombia. Antioquia: road Medellín-Puerto Triunfo; valley and drainage area of Río Magdalena, Río Claro gorge, inside Refugio Ecológico del Cañón del Río Claro, 20 Nov. 1986, *H. Wiehler 86298*.
- ACTUAL TYPE DISTRIBUTION: Holotype: COL; isotypes: HUA, K, NY, SEL, US.
- Nautilocalyx cataractarum** Wiehler, *Selbyana* 1(2): 166, fig. 1. 1975. **TYPE:** Type collection made from greenhouse-grown plant cultivated at MSBG, accession no. W-1799, 21 May 1975, *H. Wiehler 75159* (PUBLISHED TYPE DISTRIBUTION: Holotype: US; isotypes: NY, SEL, VEN). Origin of cultivated material: Venezuela. Bolívar: Auyan-tepui, Río Churún, base of Angel Falls; living plants collected in 1972, *G.C.K. Dunsterville et al. s.n.*
- ACTUAL TYPE DISTRIBUTION: Holotype: US; isotype: SEL.
- Nautilocalyx colombianus** Wiehler, *Selbyana* 2(1): 113, pl. 32C. 1977. **TYPE:** Panama. Colón; along Río Guanache, SSW of Portobelo, 10 Aug. 1971, *H. Wiehler & R.L. Dressler 71160* (PUBLISHED TYPE DISTRIBUTION: Holotype: SEL; isotypes: BH, COL, F, K, MO, NY, PMA, US).
- ACTUAL TYPE DISTRIBUTION: Holotype: SEL; isotypes: BH, COL, F, INB, K, MO, NY, PMA, US.
- Nautilocalyx colonensis** Wiehler, *Selbyana* 5(1): 89, pl. 4B. 1978. **TYPE:** Type collection made from greenhouse-grown plant cultivated at MSBG, accession no. W-2573, 24 Aug. 1978, *H. Wiehler 78137* (PUBLISHED TYPE DISTRIBUTION: Holotype: SEL; isotypes: BH, K, MO, NY, PMA, US). Origin of cultivated material: Panama. Colón: Río Escandaloso (tributary of Río Boquerón) near Mina #2, 20 May 1978, *Dressler 5817*.
- ACTUAL TYPE DISTRIBUTION: Holotype: SEL; isotypes: BH, K, MO, NY, PMA, US.
- Nautilocalyx dressleri** Wiehler, *Selbyana* 2(1): 114, pl. 32D. 1977. **TYPE:** Panama. Coclé: hills N of El Valle de Anton, 17 Jan. 1973, *R.L. Dressler 4258* (PUBLISHED TYPE DISTRIBUTION: Holotype: SEL; isotype: MO).
- ACTUAL TYPE DISTRIBUTION: Holotype: SEL; isotype: MO.
- Nautilocalyx ecuadoranus** Wiehler, *Selbyana* 5(1): 31, pl. 9A. 1978. **TYPE:** Ecuador. Pas-taza: Puyo, near Río Pindo Grande, 30 Jul. 1971, *H. Wiehler 7150* (PUBLISHED TYPE DISTRIBUTION: Holotype: SEL; isotypes: NY, QCA, S, US).
- ACTUAL TYPE DISTRIBUTION: Holotype: SEL.
- Nautilocalyx glandulifer** Wiehler, *Selbyana* 5(1): 32, pl. 9B. 1978. **TYPE:** Type collection made from greenhouse-grown plant cultivated at MSBG, accession no. W-1573, 28 Jul. 1978, *H. Wiehler 77130* (PUBLISHED TYPE DISTRIBUTION: Holotype: SEL; isotypes: BH, GH, K, MO, NY, QCA, S, SEL, U, US). Origin of cultivated material: Ecuador. Napo: western side of Tena, 4 Aug. 1971, *Wiehler 7196*.
- ACTUAL TYPE DISTRIBUTION: Holotype: SEL.
- Nautilocalyx leticianus** Wiehler, *Selbyana* 5(1): 34, pl. 9C. 1978. **TYPE:** Type collection made from greenhouse-grown plant cultivated at MSBG, accession no. W-1955, 3 Nov. 1976, *H. Wiehler 76245* (PUBLISHED TYPE DISTRIBUTION: Holotype: SEL; isotypes: BH, COL, F, GH, K, MO, NY, S, SEL, US). Origin of cultivated material: Colombia. Amazonas: near Leticia, Jun. 1974, *R.L. Dressler s.n.*
- ACTUAL TYPE DISTRIBUTION: Holotype: SEL; isotype: COL.
- Nautilocalyx mulfordii** Wiehler, *Selbyana* 5(1): 37, pl. 9D. 1978. **TYPE:** Type collection made from greenhouse-grown plant cultivated at MSBG as *Episcia* 'Amazon

White', accession no. G-116, 5 Apr. 1977, *H. Wiehler 77105* (PUBLISHED TYPE DISTRIBUTION: Holotype: SEL; isotypes: BH, GH, IAN, INPA, K, MO, NY, SEL, U, US). Origin of cultivated material: Brazil. Amazonas: 15 km W of Manaus, near Río Negro; collected about 1952, *M.R. Mulford s.n.*

ACTUAL TYPE DISTRIBUTION: Holotype: SEL; isotypes: MO, NY, R, US.

**Nautilocalyx peruvianus** Wiehler, *Selbyana* 5(1): 39, pl. 11A. 1978. **TYPE:** Type collection made from greenhouse-grown plant cultivated at MSBG, accession no. 2129, 27 May 1976, *H. Wiehler 76177* (PUBLISHED TYPE DISTRIBUTION: Holotype: SEL; isotypes: BH, F, GH, K, MO, NY, SEL, US, USM). Origin of cultivated material: Peru. Huanuco: Finca Panguana on Río Lullapichis, 1 hour walk from village of Lullapichis on Río Pachitea, 25 Jan.–15 Feb. 1975, *R.L. Dressler 4932*.

ACTUAL TYPE DISTRIBUTION: Holotype: SEL; isotypes: BH, CUZ, F, GH, K, MO, NY, P, SEL, U, US, USM.

**Nautilocalyx punctatus** Wiehler, *Selbyana* 5(1): 40, pl. 11B. 1978. **TYPE:** Type collection made from greenhouse-grown plant cultivated at MSBG, accession no. W-1821, 28 Jul. 1977, *H. Wiehler 77131* (PUBLISHED TYPE DISTRIBUTION: Holotype: SEL; isotypes: BH, K, MO, MY, NY, SEL, US, VEN). Origin of cultivated material: Venezuela. Amazonas: Cerro Yapacana; between base camp and Sabana Grande, 7 May 1970, *J.A. Steyermark & G. Bunting 103207*.

ACTUAL TYPE DISTRIBUTION: Holotype: SEL; isotypes: BH, K, MO, MY, NY, TFAV, U, UC, US, VEN.

**Nautilocalyx speciosus** Wiehler, *Selbyana* 5(1): 42, pl. 11C. 1978. **TYPE:** Panama. Bocas del Toro: Trocha 3 de Noviembre, near Los Gutiérrez, 28 Jul. 1978, *R.L. Dressler 5803* (PUBLISHED TYPE DISTRIBUTION: Holotype: SEL).

ACTUAL TYPE DISTRIBUTION: Holotype: SEL.

**Nautilocalyx vinosus** Wiehler, *Selbyana* 5(1): 43, pl. 11D. 1978. **TYPE:** Ecuador. Pastaza: Puyo, 30 Jul. 1971, *H. Wiehler 7154* (PUBLISHED TYPE DISTRIBUTION: Holotype: SEL).

ACTUAL TYPE DISTRIBUTION: Holotype: SEL.

**Nematanthus australis** A. Chautems, *Candollea* 39(1): 287, fig. 4. 1984. **TYPE:** Brazil. Paraná: Piste vers Colonia de Santa Andra-

de, 25 km depuis carrefour avec BR 376, 7 Apr. 1983, *A. Chautems & G. Hatschbach 81* (PUBLISHED TYPE DISTRIBUTION: Holotype: G; isotypes: E, GES, K, MBM, NY, S, SP, US).

ACTUAL TYPE DISTRIBUTION: Holotype: G; isotypes: E, K, MBM, MO, NY, S, SEL, SP, US.

**Neomortonia alba** Wiehler, *Gesneriana* 1: 65, fig. 17. 1995. **TYPE:** Type collection made from greenhouse-grown plant cultivated at University of Miami, accession no. G-1606, 17 Feb. 1974, *H. Wiehler 7427* (PUBLISHED TYPE DISTRIBUTION: Holotype: PMA; isotypes: GES, MO). Origin of cultivated material: Panama. Panamá: ca. 6 km upstream on Río Pasiga, 28 Oct. 1971, *H. Kennedy 1194*.

ACTUAL TYPE DISTRIBUTION: Holotype: PMA; isotypes: SEL, MO.

**Neomortonia rosea** Wiehler, *Selbyana* 1(1): 17, fig. 1–8. 1975. **TYPE:** Colombia. Valle: Pacific slope of Cordillera Occidental, old road from Cali to Buenaventura, about 10 km W of La Elsa, 29 Apr. 1972, *H. Wiehler, R.L. Dressler, N.H. Williams & N.F. Williams 7241* (PUBLISHED TYPE DISTRIBUTION: Holotype: US; isotypes: B, BR, COL, CR, F, GH, HBG, K, LE, M, MO, NY, P, PAN, SEL).

ACTUAL TYPE DISTRIBUTION: Holotype: US; isotypes: B, BR, BH, GH, HBG, MO, SEL, USM.

**Niphaea peruviana** Wiehler, *Gesneriana* 1: 65, fig. 18. 1995. **TYPE:** Peru. Huanuco: Finca "Panguana," 1 hour walk from Lullapichis (on Río Pachitea) on Río Lullapichis, 25 Jan.–15 Feb. 1975, *R.L. Dressler 4935* (PUBLISHED TYPE DISTRIBUTION: Holotype: SEL).

ACTUAL TYPE DISTRIBUTION: Holotype: SEL.

**Oerstedina cerricola** Wiehler, *Selbyana* 2(1): 116, pl. 33A. 1977. **TYPE:** Type collection made from greenhouse-grown plant cultivated at MSBG, accession no. W-2285, 16 Jul. 1977, *H. Wiehler 77120* (PUBLISHED TYPE DISTRIBUTION: Holotype: SEL; isotypes: MO, PMA, US). Origin of cultivated material: Panama. Chiriquí: Cerro Fortuna, ca. 20 km ESE of Boquete, Sep. 1976, *Dressler s.n.*

ACTUAL TYPE DISTRIBUTION: Holotype: SEL.

**Oerstedina mexicana** Wiehler, *Selbyana* 2(1): 116, pl. 33B. 1977. **TYPE:** Type collection

made from greenhouse-grown plant cultivated at MSBG, accession no. W-2180, 16 Jul. 1977, *H. Wiehler 77121* (PUBLISHED TYPE DISTRIBUTION: Holotype: SEL; isotypes: MEXU, US). Origin of type material: Mexico. Guerrero: road between Ocoate and Xextla, 17 Jun. 1973, *Dressler s.n.*

ACTUAL TYPE DISTRIBUTION: Holotype: SEL.

***Paliavana lasiantha*** Wiehler, *Selbyana* 7(2-4): 341, pl. 4. 1984. **TYPE:** Type collection made from greenhouse-grown plant cultivated at MSBG, accession no. G-997, 30 Jul. 1983, *H. Wiehler 8303* (PUBLISHED TYPE DISTRIBUTION: Holotype: GES; isotypes: HB, K, NY, R, RB, SEL, US). Origin of cultivated material: Brazil. Minas Gerais: outside Diamantina, 1965, *R. Wilson W65-13*.

ACTUAL TYPE DISTRIBUTION: Holotype: R; isotypes: SEL, US.

***Paradrymonia alba*** Wiehler, *Selbyana* 5(1): 46, pl. 12A. 1978. **TYPE:** Panama. Bocas del Toro: Filo de Almirante, valley beyond ridge when approaching from Almirante, 22 May 1972, *H. Wiehler & R.L. Dressler 72303* (PUBLISHED TYPE DISTRIBUTION: Holotype: SEL).

ACTUAL TYPE DISTRIBUTION: Holotype: SEL.

***Paradrymonia aurea*** Wiehler, *Selbyana* 5(1): 46, pl. 12B. 1978. **TYPE:** Type collection made from greenhouse-grown plant cultivated at MSBG, accession no. W-1747, 13 May 1975, *H. Wiehler 75269* (PUBLISHED TYPE DISTRIBUTION: Holotype: SEL; isotypes: AAU, K, NY, QCA, S, US). Origin of cultivated material: Ecuador. Napo: ca. 3 km S of Tena, 3 Aug. 1971, *Wiehler 7199*.

ACTUAL TYPE DISTRIBUTION: NOT FOUND; **NEOTYPE** here designated: Ecuador. Pastaza: road Puyo to Canelos, 8 km E of Puyo, 21 Apr. 1986, *H. Wiehler & GRF Expedition 86129* (Neotype: SEL; isoneotype: US).

FIGURE 3.

Neither the type material of *Paradrymonia aurea* nor the additional specimens cited with the protologue have been found. Thus, a more recent collection, one that had been annotated as this species by Wiehler, is selected as the neotype. Given the poor quality of the selected neotype, however, the illustration published with the original description (*Selbyana* 5: 47, pl. 12B, 1978) should also serve to identify this species.

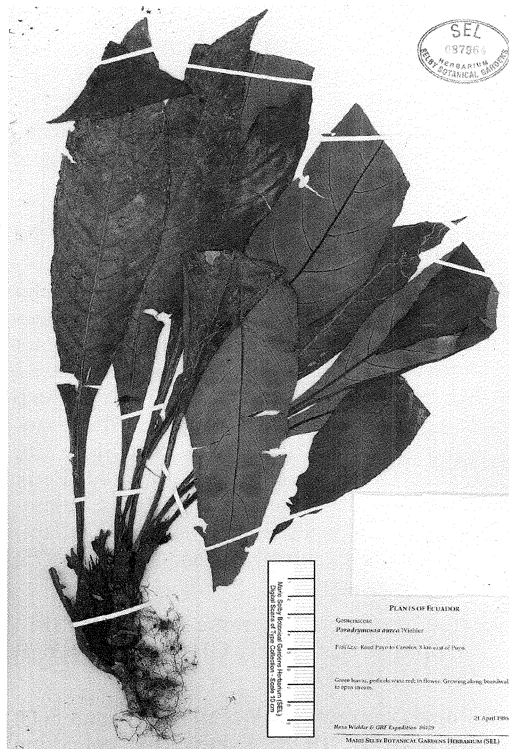


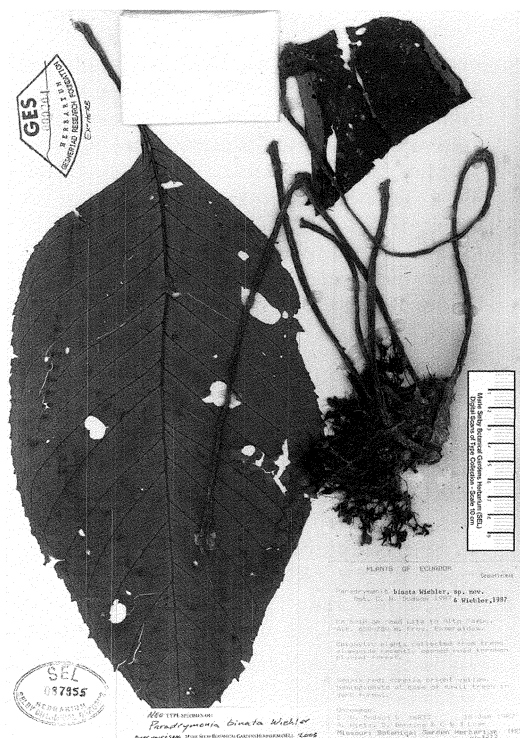
FIGURE 3. *Paradrymonia aurea*. Neotype at SEL.

***Paradrymonia binata*** Wiehler, *Phytologia* 73(3): 231. 1992 [see also: *Gesneriana* 1: 67, fig. 19. 1995]. **TYPE:** Type collection made from greenhouse-grown plant cultivated at GRF, accession no. G-3384, 20 Aug. 1992, *H. Wiehler 9205* (PUBLISHED TYPE DISTRIBUTION: Holotype: GES; isotypes: NY, QCA, US). Origin of cultivated material: Ecuador. Esmeraldas: 5 km W of Lita, 24 Apr. 1990, *H. Wiehler & GRF Expedition 9071*.

ACTUAL TYPE DISTRIBUTION: NOT FOUND; **NEOTYPE** here designated: Ecuador. Esmeraldas: km 5-18 on road Lita to Alto Tambo, 18 Jan. 1987, *C.H. Dodson, A. Hirtz, D. Benzing, C. Luer & J. Luer. 16833* (Neotype: SEL; isoneotype: MO). FIGURE 4.

None of the type specimens of *Paradrymonia binata* cited in the protologue were found. In the subsequent 1995 *Gesneriana* discussion of this species, an additional collection is mentioned, *C.H. Dodson et al. 16833*, and is here designated as the neotype.

***Paradrymonia flava*** Wiehler, *Selbyana* 5(1): 51, pl. 12C. 1978. **TYPE:** Panama. Colón:

FIGURE 4. *Paradrymonia binata*. Neotype at SEL.

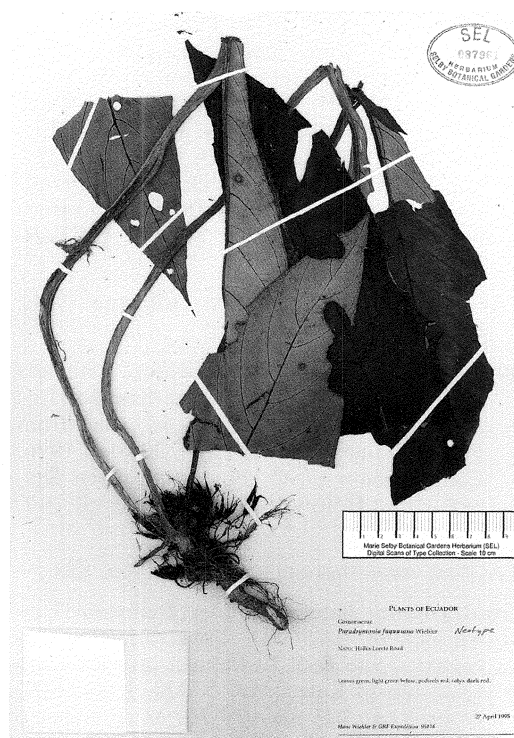
Río Guanche, near Portobelo, 10 Aug. 1971, *H. Wiehler & R.L. Dressler 71158* (PUBLISHED TYPE DISTRIBUTION: Holotype: SEL; isotypes: BH, F, GH, K, MO, NY, PMA, US).

ACTUAL TYPE DISTRIBUTION: Holotype: SEL; isotypes: MO, PMA.

***Paradrymonia fuquaiana*** Wiehler, *Phytologia* 73(3): 69. 1992 [see also: *Gesneriana* 1: 69, fig. 20. 1995]. **TYPE:** Type specimen made from greenhouse-grown plant cultivated at GRF, accession no. G-3590, 20 Aug. 1992, *H. Wiehler 9204* (PUBLISHED TYPE DISTRIBUTION: Holotype: GES; isotypes: QCA, NY, US, others to be distributed). Origin of cultivated material: Ecuador. Napo; N of Tena, road Hollin-Loreto, old road construction camp, at km 17 from Hollin, 6 Jan. 1990, *R. Determann et al. s.n.*

ACTUAL TYPE DISTRIBUTION: NOT FOUND; **NEOTYPE** here designated: Ecuador. Napo; road Hollin-Loreto, 27 Apr. 1995, *H. Wiehler & GRF Expedition 95116* (Neotype: SEL). **FIGURE 5.**

No type material of *Paradrymonia fuquaiana* has been found. However, one of

FIGURE 5. *Paradrymonia fuquaiana*. Neotype at SEL.

the specimens cited in the subsequent 1995 *Gesneriana* discussion of the species, *H. Wiehler & GRF Expedition 95116*, is available and is here designated as the neotype.

***Paradrymonia gibbosa*** Wiehler, *Selbyana* 5(1): 52, pl. 12D. 1978. **TYPE:** Type collection made from greenhouse-grown plant cultivated at MSBG, accession no. W-1663, 3 Nov. 1976, *H. Wiehler 76246* (PUBLISHED TYPE DISTRIBUTION: Holotype: SEL; isotypes: COL, NY, US, VALLE). Origin of cultivated material: Colombia. Valle: old road from Cali to Buenaventura, ca. 10 km below Queremal, 1 May 1972, *H. Wiehler et al. 72120*.

ACTUAL TYPE DISTRIBUTION: NOT FOUND; **LECTOTYPE** here designated: Colombia. Valle: old road from Cali to Buenaventura, near La Elsa, 30 Apr. 1972, *H. Wiehler & R.L. Dressler 7278* (Lectotype: SEL).

No type material of *Paradrymonia gibbosa* has been found, but the paratype from the original publication, *H. Wiehler et al. 7278*, has been selected as the lectotype.

***Paradrymonia gigantea*** Wiehler, *Selbyana*

5(1): 53, pl. 13A. 1978. **TYPE:** Type collection made from greenhouse-grown plant cultivated at MSBG, accession no. W-1687, 3 Nov. 1976, *H. Wiehler et al. 76247* (PUBLISHED TYPE DISTRIBUTION: Holotype: SEL; isotypes: BH, COL, F, GH, K, MO, NY, U, US, VALLE). Origin of cultivated material: Colombia. Valle: old road from Cali to Buenaventura, near La Elsa, 30 Apr. 1972, *H. Wiehler et al. 7236*.

ACTUAL TYPE DISTRIBUTION: Holotype: SEL; isotype: US.

**Paradrymonia hypocyrta** Wiehler, *Selbyana* 2(1): 82, pl. 25C. 1977. **TYPE:** Ecuador. Los Ríos: Montañas de Ila, km 12, road from Patricia Pilar to 24 de Mayo, 30 May 1976, *C.H. Dodson 6092* (PUBLISHED TYPE DISTRIBUTION: Holotype: SEL; isotypes: K, NY, QCA, S, US).

ACTUAL TYPE DISTRIBUTION: Holotype: SEL.

**Paradrymonia lacera** Wiehler, *Selbyana* 7(2–4): 343, pl. 5A. 1984. **TYPE:** Ecuador. Cotopaxi: 3 km E of El Palmar, on road from Quevedo to Latacunga, 5 Apr. 1980, *C.H. Dodson & A.H. Gentry 10194* (PUBLISHED TYPE DISTRIBUTION: Holotype: SEL).

ACTUAL TYPE DISTRIBUTION: Holotype: SEL; isotypes: QCA, QCNE.

**Paradrymonia macrophylla** Wiehler, *Selbyana* 5(1): 56, pl. 13B. 1978. **TYPE:** Panama. Coclé: Hills N of El Valle de Anton, 15 Aug. 1971, *H. Wiehler & R.L. Dressler 71286* (PUBLISHED TYPE DISTRIBUTION: Holotype: SEL; isotypes: F, K, MO, NY, PMA, US).

ACTUAL TYPE DISTRIBUTION: Holotype: SEL.

**Paradrymonia prististoma** Wiehler, *Phytologia* 73(3): 233. 1992 [see also: *Gesneriana* 1: 70. 1995]. **TYPE:** Ecuador. Napo: unfinished road from Tena to Latacunga, along Río Pano, 16–18 km from Tena, 23 Apr. 1986, *H. Wiehler & GRF Expedition 86184* (PUBLISHED TYPE DISTRIBUTION: Holotype: GES; isotype: QCA).

ACTUAL TYPE DISTRIBUTION: Holotype: SEL.

**Paradrymonia sericea** Wiehler, *Selbyana* 5(1): 57, pl. 13C. 1978. **TYPE:** Type collection made from greenhouse-grown plant cultivated at MSBG, accession no. W-1644, 13 May 1975, *H. Wiehler 75270* (PUBLISHED TYPE DISTRIBUTION: Holotype: SEL). Origin of cultivated material: Colombia. Valle: old road from Cali to Buenaventura, below La Elsa, 30 Apr. 1972, *Wiehler et al. 7261*.

ACTUAL TYPE DISTRIBUTION: Holotype: SEL.

**Paradrymonia tylocalyx** Wiehler, *Selbyana* 5(1): 58, pl. 13D. 1978. **TYPE:** Type collection made from greenhouse-grown plant cultivated at MSBG, accession no. W-1691, 13 May 1975, *H. Wiehler 75271* (PUBLISHED TYPE DISTRIBUTION: Holotype: SEL; isotypes: BH, COL, F, K, NY, US, VALLE). Origin of cultivated material: Colombia. Valle: old road from Cali to Buenaventura, below La Elsa, 30 Apr. 1972, *Wiehler et al. 7253*.

ACTUAL TYPE DISTRIBUTION: Holotype: SEL.

**Parakohleria abunda** Wiehler, *Selbyana* 5(1): 5, pl. 1A. 1978. **TYPE:** Type collection made from greenhouse-grown plant cultivated at MSBG, accession no. W-2405, 11 Dec. 1977, *H. Wiehler 77129* (PUBLISHED TYPE DISTRIBUTION: Holotype: SEL; isotypes: K, NY, QCA, S, US). Origin of cultivated material: Ecuador. Morona-Santiago: Cordillera de Cutucú, western slopes along a trail from Logroño to Yaupi, Nov. 1976, *Madison et al. 3194*.

ACTUAL TYPE DISTRIBUTION: HOLOTYPE LOST; LECTOTYPE here designated from extant isotype specimens: Lectotype: SEL; isolectotypes: K, QCA, US.

Basionym of *Pearcea abunda* (Wiehler) L.P. Kvist & L.E. Skog, *Smithson. Contr. Bot.* 84: 20. 1996.

The holotype of *Parakohleria abunda*, *H. Wiehler 77129*, was lost in the mail when a loan of specimens was being returned to SEL from US. An extant isotype at SEL is thus selected as lectotype, with the other known isotypes at K, QCA, and US becoming isolectotypes.

**Parakohleria hispidissima** Wiehler, *Selbyana* 5(1): 6, pl. 1B. 1978. **TYPE:** Ecuador. Pastaza: 4 km E of Puyo on road to Veracruz, 31 Jul. 1971, *H. Wiehler 7176* (PUBLISHED TYPE DISTRIBUTION: Holotype: SEL; isotypes: US, NY, K, SEL).

ACTUAL TYPE DISTRIBUTION: NOT FOUND; NEOTYPE here designated: Ecuador. Pastaza: Cantón Puyo. Parroquia Veracruz. La Esperanza (Siguin); Finca Salina (de Hilda Perez). Premontane wet forest, km 14 on the Puyo-Macas road, 800–1000 m, 01°32'40"S, 077°53'53"W, 24 Jun. 2003, *J.L. Clark & J. Katzenstein 8300* (Holotype: QCNE; isotypes: AAU, COL, F, GH, K, MO, NY, P, QCA, SEL, SRP, US, USM, VEN, WU). FIGURE 6.



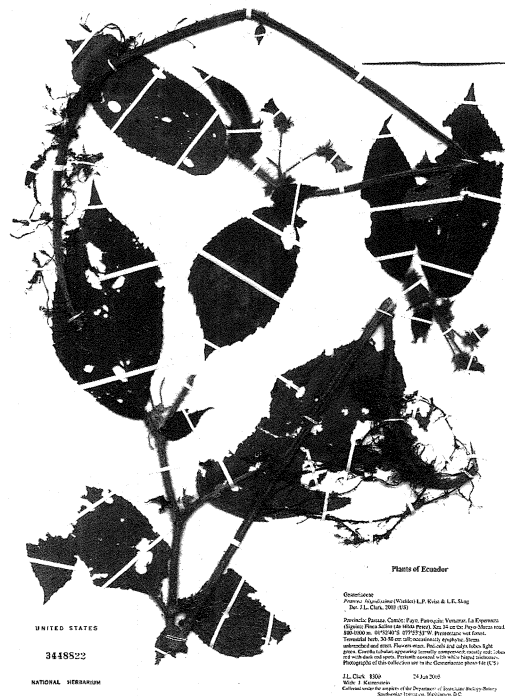


FIGURE 6. *Parakohleria hispidissima*. Isoneotype at US.

Basionym of *Pearcea hispidissima* (Wiedler) L.P. Kvist & L.E. Skog, *Smithson. Contr. Bot.* 84: 29. 1996.

The only known specimen of type material of *Parakohleria hispidissima* was lost in the mail on return to SEL from US along with paratypes cited in the original publication. No other examples of the type collection are known to exist. Thus, the neotype has been selected from appropriate material, collected from near the type locality.

***Parakohleria vinicolor*** Wiedler, *Selbyana* 5(1): 9, pl. 1D. 1978. **TYPE:** Type collection made from greenhouse-grown plant cultivated at MSBG, accession no. G-489, 20 Jul. 1975, *H. Wiedler 75266* (PUBLISHED TYPE DISTRIBUTION: Holotype: SEL). Origin of cultivated material: Peru. Loreto: Boquerón del Padre Abad, between Divisoria and Aguaytia, 30 Apr. 1960, *H.E. Moore et al.* 8387.

ACTUAL TYPE DISTRIBUTION: NOT FOUND; **LECTOTYPE** here designated: Wild collection cited above, *H.E. Moore et al.* 8387 (Lectotype: US; islectotypes: BH, GH, USM).

Synonym of *Pearcea sprucei* (Britton) L.P. Kvist & L.E. Skog according to L.P. Kvist & L.E. Skog, *Smithson. Contr. Bot.* 84: 40. 1996.

The only example of the type collection, *Wiedler 75266*, was lost in the mail. However, the wild collection that was the origin of cultivated material and cited in the protologue is extant and thus designated as the lectotype.

***Pearcea gracilis*** L.P. Kvist & L.E. Skog, *Smithson. Contr. Bot.* 84: 27, fig. 17. 1996. **TYPE:** Ecuador. Morona-Santiago; 9–10 km SE of San Juan Bosco, 27 Jan. 1987, *A.H. Gentry, C. Bonifaz & J. Loo C.* 30865 (Holotype: QCA; isotypes: K, MO, NY, SEL).

***Pentadenia angustata*** Wiedler, *Selbyana* 2(1): 118, pl. 33C. 1977. **TYPE:** Colombia. Valle: old road from Cali to Buenaventura, 8 km past La Elsa, 30 Apr. 1972, *H. Wiedler, R.L. Dressler & N.H. Williams 7276* (PUBLISHED TYPE DISTRIBUTION: Holotype: SEL; isotypes: COL, K, MO, NY, US).

ACTUAL TYPE DISTRIBUTION: Holotype: SEL. Basionym of *Columnnea angustata* (Wiedler) L.E. Skog according to L.E. Skog, *Ann. Missouri Bot. Gard.* 65: 844. [1978] 1979.

***Pentadenia byrsina*** Wiedler, *Selbyana* 2(1): 119, pl. 33D. 1977. **TYPE:** Type collection made from greenhouse-grown plant cultivated at MSBG, accession no. W-2138, 17 Jul. 1977, *H. Wiedler 77122* (PUBLISHED TYPE DISTRIBUTION: Holotype: SEL; isotypes: COL, K, NY, QCA, S, US). Origin of cultivated material: Ecuador. Napo: woods near Baeza; seed collected in Dec. 1974, *Dressler et al. s.n.*

ACTUAL TYPE DISTRIBUTION: Holotype: SEL. Basionym of *Columnnea byrsina* (Wiedler) L.P. Kvist & L.E. Skog, *Allertonia* 6: 384. 1993.

***Pentadenia colombiana*** Wiedler, *Selbyana* 2(1): 120, pl. 34A. 1977. **TYPE:** Colombia. Valle: along Río Dagua, near Buenaventura, on old road from Buenaventura to Cali, 1 May 1972, *H. Wiedler et al. 72130* (PUBLISHED TYPE DISTRIBUTION: Holotype: SEL; isotypes: BH, COL, F, K, MO, NY, P, S, U, US, W).

ACTUAL TYPE DISTRIBUTION: Holotype: SEL. Basionym of *Columnnea colombiana* (Wiedler) L.P. Kvist & L.E. Skog, *Allertonia* 6: 385. 1993.

***Pentadenia crassicaulis*** Wiedler, *Selbyana* 2(1): 122, pl. 34B. 1977. **TYPE:** Colombia. Na-

riño: near Ricaurte, at km 79 on road from Túquerres to Tumaco, along Río Gaubo, 9 May 1972, *H. Wiehler & N.H. Williams* 72185 (PUBLISHED TYPE DISTRIBUTION: Holotype: SEL; isotypes: COL, K, MO, NY, S, U, US).

ACTUAL TYPE DISTRIBUTION: Holotype: SEL.  
Basionym of *Columnea crassicaulis* (Wiehler) L.P. Kvist & L.E. Skog, *Allertonia* 6: 385. 1993.

***Pentadenia ecuadorana*** Wiehler, *Selbyana* 2(1): 82, pl. 25D. 1977. **TYPE:** Ecuador. Pastaza: Puyo, on trees surrounding Hotel Turingia, 30 Jul. 1971, *H. Wiehler* 7163 (PUBLISHED TYPE DISTRIBUTION: Holotype: SEL; isotypes: B, GH, K, MO, NY, QCA, S, U, US).

ACTUAL TYPE DISTRIBUTION: Holotype: SEL.  
Basionym of *Columnea ecuadorana* (Wiehler) L.E. Skog, *Taxon* 33: 126. 1984 and synonym of *Columnea angustata* (Wiehler) L.P. Kvist & L.E. Skog, *Allertonia* 6: 384. 1993.

***Pentadenia katzensteiniae* ['katzensteinii']** Wiehler, *Phytologia* 73(3): 235. 1992 [see also: *Gesneriana* 1: 75, fig. 23. 1995]. **TYPE:** Ecuador. Morona-Santiago; about 60 km from Limon S to Gualaquiza, 21 Apr. 1988, *H. Wiehler & GRF Expedition 88128* (PUBLISHED TYPE DISTRIBUTION: Holotype: GES; isotypes: QCA, F, K, MO, NY, US).

ACTUAL TYPE DISTRIBUTION: Holotype: QCA; isotypes: COL, F, K, MO, NY, SEL, US.  
Basionym of *Columnea katzensteiniae* (Wiehler) L.P. Kvist & L.E. Skog, *Novon* 7: 413. 1997.

The specific epithet suffix of *Pentadenia katzensteiniae* has been corrected to reflect the gender of the person for whom the species is named, Jeanne Katzenstein, a participant in the GRF Expeditions.

***Pentadenia manabiana*** Wiehler, *Phytologia* 73(3): 236. 1992 [see also: *Gesneriana* 1: 75, fig. 24. 1995]. **TYPE:** Type collection made from greenhouse-grown plant cultivated at GRF, accession no. G-2462, 8 Jul. 1987, *H. Wiehler* 87102 (PUBLISHED TYPE DISTRIBUTION: Holotype: GES; isotypes: QCA, B, F, HBG, K, MO, NY, SEL, U, US). Origin of cultivated material: Ecuador. Manabí: km 67 on road from Chone to Santo Domingo, 31 Jul. 1977, *C.H. Dodson* 6791.

ACTUAL TYPE DISTRIBUTION: Holotype: SEL.  
Basionym of *Columnea manabiana* (Wiehler)

J.F. Smith & L.E. Skog, *Novon* 3: 189. 1993.

***Pentadenia orientandina*** Wiehler, *Selbyana* 2(1): 123, pl. 34D. 1977. **TYPE:** Type collection made from greenhouse-grown plant cultivated at MSBG, accession no. W-2273, 20 Jul. 1977, *H. Wiehler* 77123 (PUBLISHED TYPE DISTRIBUTION: Holotype: SEL; isotypes: BH, F, GH, K, MO, NY, P, QCA, S, U, US). Origin of cultivated material: Ecuador. Morona-Santiago: Cordillera de Cutucú, 25 km SE of Logroño, 15 Jan. 1976, *M.T. Madison & F.R. Coleman* 2537.

ACTUAL TYPE DISTRIBUTION: Holotype: SEL; isotype: US.

Basionym of *Columnea orientandina* (Wiehler) L.P. Kvist & L.E. Skog, *Allertonia* 6: 392. 1993.

***Pentadenia rileyi*** Wiehler, *Phytologia* 73(3): 236. 1992 [see also: *Gesneriana* 1: 79, fig. 25. 1995]. **TYPE:** Ecuador. Napo: 37 km from Baeza on road to Lago Agrio, 24 Apr. 1986, *H. Wiehler & GRF Expedition 86243* (PUBLISHED TYPE DISTRIBUTION: Holotype: GES; isotypes: QCA, F, K, MO, NY, SEL, U, US).

ACTUAL TYPE DISTRIBUTION: Holotype: QCA; isotypes: COL, F, K, MO, NY, SEL, U, US.  
Basionym of *Columnea rileyi* (Wiehler) J.F. Smith, *Syst. Bot. Monogr.* 44: 68. 1994.

***Pentadenia rubriacuta*** Wiehler, *Phytologia* 73(3): 237. 1992 [see also: *Gesneriana* 1: 81, fig. 26. 1995]. **TYPE:** Type collection made from greenhouse-grown plant cultivated at GRF, accession no. G-3200, 8 Jul. 1990, *H. Wiehler* 90175 (PUBLISHED TYPE DISTRIBUTION: Holotype: GES; isotypes: B, F, HBG, K, MO, NY, QCA, SEL, U, US). Origin of cultivated material: Ecuador. El Oro: road Loja-Santa Rosa, ca. 20 km past Piñas, 17 Apr. 1986, *H. Wiehler & GRF Expedition 8648*.

ACTUAL TYPE DISTRIBUTION: NOT FOUND;  
**LECTOTYPE** here designated: Wild collection cited above, *Hans Wiehler & GRF Expedition 8648* (Lectotype: QCA; isolectotypes: F, HBG, K, MO, NY, SEL, U, US).  
Synonym of *Columnea spathulata* Mansfeld according to L.E. Skog & L.P. Kvist, *Novon* 7: 415. 1997.

None of the type specimens of *Pentadenia rubriacuta* were located. The wild collection that is the origin of cultivated material is thus selected as the lectotype.

**Pentadenia tandapiana** Wiehler, *Phytologia* 73(3): 238. 1992 [see also: *Gesneriana* 1: 84, fig. 27. 1995]. **TYPE:** Ecuador. Pichincha: 7 km from San Miguel de los Bancos on road to Mindo, 30 Apr. 1990, *H. Wiehler & GRF Expedition 90133* (PUBLISHED TYPE DISTRIBUTION: Holotype: GES; isotypes: QCA, US).

ACTUAL TYPE DISTRIBUTION: Holotype: QCA; isotypes: SEL, US.

Basionym of *Columnea tandapiana* (Wiehler) L.E. Skog & L.P. Kvist, *Novon* 7: 414. 1997.

**Pentadenia zapotalana** Wiehler, *Selbyana* 2(1): 85, pl. 26B. 1977. **TYPE:** Ecuador. Los Ríos: Nuevo Zapotal, 2 km N of Ventanas, ca. 20 km S of Quevedo, 20 Jun. 1971, *H. Wiehler et al. 71312* (PUBLISHED TYPE DISTRIBUTION: Holotype: SEL; isotypes: K, MO, NY, QCA, S, U, US).

ACTUAL TYPE DISTRIBUTION: Holotype: SEL; isotypes: COL, F, MO, NY, QCA, S, U, US.

Basionym of *Columnea zapotalana* (Wiehler) L.E. Skog, *Taxon* 33: 126. 1984 and synonym of *Columnea microsepala* (C.V. Morton) L.P. Kvist & L.E. Skog, *Allertonia* 6: 391. 1993.

**Phinaea ecuadorana** Wiehler, *Gesneriana* 1: 84, fig. 28. 1995. **TYPE:** Ecuador. El Oro: along road from Loja to Santa Rosa, 20 km past Piñas, 17 Apr. 1986, *H. Wiehler & GRF Expedition 8652* (PUBLISHED TYPE DISTRIBUTION: Holotype: QCNE; isotypes: B, E, GES, K, MO, NY, QCA, SEL, US).

ACTUAL TYPE DISTRIBUTION: Holotype: QCNE; isotypes: B, E, K, MO, NY, QCA, SEL, US.

**Phinaea macrophylla** Wiehler, *Gesneriana* 1: 86, fig. 29. 1995. **TYPE:** Colombia. Antioquia: road Medellín-Bogotá, at Refugio Ecológico del Cañon del Río Claro, a tributary of Río Magdalena, 21 Nov. 1986, *H. Wiehler 86299* (PUBLISHED TYPE DISTRIBUTION: Holotype: HUA; isotypes: COL, GES, NY, US).

ACTUAL TYPE DISTRIBUTION: Holotype: HUA; isotypes: COL, K, NY, SEL, US.

**Reldia alternifolia** Wiehler, *Selbyana* 2(1): 124, pl. 35A. 1977. **TYPE:** Panama. Panamá: El Llano-Cartí highway, about 17 km n of El Llano, 16 Jan. 1974, *R.L. Dressler 4540* (PUBLISHED TYPE DISTRIBUTION: Holotype: SEL; isotypes: K, MO, SEL, US).

ACTUAL TYPE DISTRIBUTION: Holotype: SEL; isotypes: AAU, CR, K, MO, NY, PMA, SEL, US.



FIGURE 7. *Rhoogeton panamensis*. Neotype at US.

**Reldia veraguensis** Wiehler, *Selbyana* 2(1): 127, pl. 35B. 1977. **TYPE:** Panama. Veraguas: between third branch of Río Santa María and continental divide, 13–14 km NW of Santa Fé, 16 Nov. 1974, *R.L. Dressler 4831* (PUBLISHED TYPE DISTRIBUTION: Holotype: SEL).

ACTUAL TYPE DISTRIBUTION: Holotype: SEL.

Basionym of *Reldia minutiflora* (L.E. Skog) L.P. Kvist & L.E. Skog var. *veraguensis* (Wiehler) L.P. Kvist & L.E. Skog, *Nordic J. Bot.* 8: 609. 1987.

**Rhoogeton panamensis** Wiehler, *Phytologia* 73(3): 239. 1992 [see also: *Gesneriana* 1: 88, fig. 30. 1995]. **TYPE:** Type collection made from greenhouse-grown plant cultivated at GRF, accession no. G-2633, 8 Jul. 1985, *H. Wiehler 8536* (PUBLISHED TYPE DISTRIBUTION: Holotype: GES; isotypes: PMA, K, MO, NY, SEL, US). Origin of cultivated material: Panama. Coclé: La Mesa; Jun. 1978, *Dressler s.n.*

ACTUAL TYPE DISTRIBUTION: NOT FOUND; **NEOTYPE** here designated: Costa Rica. "Terres, rochers humides des plaines de Surubres," Jul. 1890, *H. Pittier & H.T. Durand 2654* [*Biolley 343*] (Neotype: US; Iso-neotype: BR). FIGURE 7.

Synonym of *Paradrymonia pedunculata* L.E. Skog according to L.E. Skog & L.P. Kvist, *Novon* 7: 416. 1997.

No sheets of the type collection have been located. The additional specimen cited in the 1995 Gesneriana discussion of this species is, however, at US with a presumed duplicate at BR. This specimen is thus designated as the neotype. At US, the sheet is numbered 2654 near the top of the label, below the names H. Pittier & H.T. Durand, "legit H. Pittier" has been crossed and Biolley is written in, in association with the number 343. It is not clear who is[are] the collector[s]. Wiehler notes the specimen at US as "Biolley 343 or Pittier & Durand 2654." The sheet at BR labelled "Biolley 2654" is undoubtedly part of the same gathering. The Pittier field books at US show his number 2654 to be a different plant.

**Rhytidophyllum acunae** C.V. Morton, *Brittonia* 9(1): 23. 1957. **TYPE:** Cuba. Oriente: Montecristo, Eastern-most part of the province, 15, 16 Jan. 1956, *C.V. Morton & Bro. Alain [H. Liogier] 9181* (PUBLISHED TYPE DISTRIBUTION: Holotype: US; isotypes: BM, GH, US).

ACTUAL TYPE DISTRIBUTION: Holotype: US; isotypes: BM, GH, SEL.

**Rufodorsia intermedia** Wiehler, *Selbyana* 1(2): 144, fig. 3. 1975. **TYPE:** Panama. Coclé: hills N of El Valle de Anton, 14 Aug. 1971, *H. Wiehler & R.L. Dressler 71249* (PUBLISHED TYPE DISTRIBUTION: Holotype: US; isotypes: B, BR, F, GH, HBG, K, L, LE, M, MO, NY, P, PMA, SEL, UC).

ACTUAL TYPE DISTRIBUTION: Holotype: US; isotypes: BR, MO, NY, PMA, SEL.

**Rufodorsia major** Wiehler, *Selbyana* 1(2): 140, fig. 1. 1975. **TYPE:** Panama. Panamá: Cerro Jefe, ca. 20 km N of Tocumen, 11 Aug. 1971, *H. Wiehler & R.L. Dressler 71176* (PUBLISHED TYPE DISTRIBUTION: Holotype: US; isotypes: B, BR, CR, F, GH, HBG, K, L, LE, MO, NY, P, PMA, SEL, UC).

ACTUAL TYPE DISTRIBUTION: Holotype: US; isotypes: BR, HBG, MO, NY, P, PMA, SEL.

**Rufodorsia minor** Wiehler, *Selbyana* 1(2): 142, fig. 2. 1975. **TYPE:** Panama. Panamá: Cerro Jefe, ca. 20 km N of Tocumen, 11 Aug. 1971, *H. Wiehler & R.L. Dressler 71175* (PUBLISHED TYPE DISTRIBUTION: Holotype: US; isotypes: B, BR, CR, F, GH, HBG, K, L, LE, MO, NY, P, PMA, SEL, UC).

ACTUAL TYPE DISTRIBUTION: Holotype: US; isotypes: BR, COL, HBG, MO, NY, P, PMA, SEL.

**Sinningia harleyi** Wiehler & A. Chautems, *Candollea* 46: 414, fig. 2. 1991. **TYPE:** Brazil. Bahía: Jussiapé, proximo da cidade de Rio de Contas, cachoeira da Fraga, 11 Feb. 1991, *A.M. de Carvalho & A. Chautems 3235* (PUBLISHED TYPE DISTRIBUTION: Holotype: CEPEC; isotypes: G, GES, US).

ACTUAL TYPE DISTRIBUTION: Holotype: CEPEC; isotypes: G, R, SEL, US.

**Smithiantha aurantiaca** Wiehler, *Gesneriana* 1: 90, fig. 31. 1995. **TYPE:** Type collection made from greenhouse-grown plant cultivated at GRF, accession no. G-3878, 8 Jul. 1995, *H. Wiehler 95159* (PUBLISHED TYPE DISTRIBUTION: Holotype: MEXU; isotypes: GES, BH, K, NY, SEL, US). Origin of cultivated material: Mexico. Oaxaca: Uxpanapan, near Matias Romero and Rte. 185 (also found near Veracruz state border), seed collected Feb. 1994, *A. Lau 9410002*.

ACTUAL TYPE DISTRIBUTION: Holotype: MEXU; isotypes: SEL, US.

**Smithiantha canarina** Wiehler, *Phytologia* 73(3): 239. 1992 [see also: *Gesneriana* 1: 90, fig. 32. 1995]. **TYPE:** Type collection made from greenhouse-grown plant cultivated at GRF, accession no. G-3584, 6 Dec. 1991, *H. Wiehler 91240* (PUBLISHED TYPE DISTRIBUTION: Holotype: GES; isotypes: BH, K, MEXU, NY, SEL, US). Origin of cultivated material: Mexico. Oaxaca; area of Temaxcal near dam overflow of Presa Miguel Alemán, rhizomes collected, 24 Apr. 1991; *H. Wiehler et al. 9105*.

ACTUAL TYPE DISTRIBUTION: Holotype: SEL.

**Smithiantha laui** Wiehler, *Phytologia* 73(3): 240. 1992 [see also: *Gesneriana* 1: 92, fig. 33. 1995]. **TYPE:** Type collection made from greenhouse-grown plant cultivated at GRF, accession no. G-3588, 6 Dec. 1991, *H. Wiehler 91241* (PUBLISHED TYPE DISTRIBUTION: Holotype: GES; isotypes: BH, K, MEXU, NY, SEL, US). Origin of cultivated material: Mexico. Oaxaca; about halfway between Valle Nacional and Oaxaca on road #75, 25 Apr. 1991, *H. Wiehler et al. 9117*.

ACTUAL TYPE DISTRIBUTION: NOT FOUND; **LECTOTYPE** here designated: Mexico. Oaxaca; on road Valle Nacional-Oaxaca between km 69–70, 25 Apr. 1991, *H. Wiehler & GRF Expedition 9117* (Lectotype: MEXU; isolectotypes: K, NY, SEL, US).

No specimens of the type collection were found. The wild source of the cultivated material, *Wiehler et al. 9117*, is extant and thus designated here as the lectotype.

***Trichantha angustifolia*** Wiehler, *Selbyana* 7(2-4): 336, pl. 3A. 1984. **TYPE:** Type specimen made from greenhouse-grown plant cultivated as MSBG, accession no. W-2816, 10 Nov. 1980, *H. Wiehler 80202* (PUBLISHED TYPE DISTRIBUTION: Holotype: SEL). Origin of cultivated material: Ecuador. Pastaza; vicinity of Puyo, garden of Hotel Turingia in Puyo, 1 May 1979, *H. Wiehler & D. Masterson 79201*.

ACTUAL TYPE DISTRIBUTION: Holotype: SEL.

*Columnnea elongatifolia* L.P. Kvist & L.E. Skog, *Allertonia* 6: 373, 1993, is a replacement name for *Trichantha angustifolia* Wiehler (not *Columnnea angustifolia* (DC.) O. Kuntze, a different species) when the species is transferred to *Columnnea*.

***Trichantha breneri*** Wiehler, *Selbyana* 1(1): 40, fig. 3. 1975. **TYPE:** Type collection made from greenhouse-grown plant cultivated at University of Miami, accession no. W-1501, 3 Aug. 1972, *H. Wiehler 72335* (PUBLISHED TYPE DISTRIBUTION: Holotype: US; isotype: SEL). Origin of cultivated material: Ecuador. Napo: garden of Hotel Turingia in Puyo, 30 Jul. 1971, *H. Wiehler 7178*.

ACTUAL TYPE DISTRIBUTION: Holotype: US; isotype: SEL.

Basionym of *Columnnea breneri* (Wiehler) B.D. Morley, *Garden* (London) 100: 438. 1975.

***Trichantha ciliata*** Wiehler, *Selbyana* 2(1): 129, pl. 36B. 1977. **TYPE:** Ecuador. Pichincha: road from Alluriquin to Chiriboga, 20 Apr. 1977, *M.T. Madison 4065* (PUBLISHED TYPE DISTRIBUTION: Holotype: SEL).

ACTUAL TYPE DISTRIBUTION: Holotype: SEL. Basionym of *Columnnea ciliata* (Wiehler) L.P. Kvist & L.E. Skog, *Allertonia* 6: 372. 1993.

***Trichantha citrina*** Wiehler, *Selbyana* 5(1): 92, pl. 4D. 1978. **TYPE:** Type collection made from greenhouse-grown plant cultivated at MSBG, accession no. W-2451, 21 Nov. 1978, *H. Wiehler 78169* (PUBLISHED TYPE DISTRIBUTION: Holotype: SEL; isotypes: BH, F, K, MO, NY, PMA, US). Origin of cultivated material: Panama. Darién: Cerro Pirre, Jul. 1977, *R.L. Dressler s.n.*

ACTUAL TYPE DISTRIBUTION: Holotype: SEL; isotypes: BH, F, K, MO, NY, PMA, US.

= *Columnnea citriflora* L.E. Skog, **nom. nov.** (basionym: *Trichantha citrina* Wiehler, *Selbyana* 5(1): 92, pl. 4D. 1978), not *Columnnea citrina* C.V. Morton, *Ann. Missouri Bot. Gard.* 29:44. 1942 [= *Columnnea kalbreyeriana* Masters].

***Trichantha dodsonii*** Wiehler, *Selbyana* 7(2-4): 338, pl. 3B. 1984. **TYPE:** Type collection made from greenhouse-grown plant cultivated at MSBG, accession no. W-2983, 10 Nov. 1980, *H. Wiehler 80201* (PUBLISHED TYPE DISTRIBUTION: Holotype: SEL). Origin of cultivated material: Ecuador. Morona-Santiago: N of Gualaquiza, hill near Río Calagras, 19 Sep. 1980, *C.H. Dodson et al. 10564*.

ACTUAL TYPE DISTRIBUTION: Holotype: SEL.

*Columnnea flexiflora* L.P. Kvist & L.E. Skog, *Allertonia* 6: 375, 1993, is a replacement name for *Trichantha dodsonii* Wiehler (not *Columnnea dodsonii* Wiehler, a different species) when the species is transferred to *Columnnea*.

***Trichantha filifera*** Wiehler, *Selbyana* 2(1): 130, pl. 36C. 1977. **TYPE:** Type collection made from greenhouse-grown plant cultivated at MSBG, accession no. W-1631, 23 Jul. 1977, *H. Wiehler 77127* (PUBLISHED TYPE DISTRIBUTION: Holotype: SEL). Origin of cultivated material: Colombia. Valle: Old road from Cali to Buenaventura, about 10 km beyond Queremal, on path down to Río Anchicayá, no date, *H. Wiehler 7286*.

ACTUAL TYPE DISTRIBUTION: Holotype: SEL; isotype: COL.

= *Columnnea filamentosa* L.E. Skog, **nom. nov.** (basionym: *Trichantha filifera* Wiehler, *Selbyana* 2(1): 130, pl. 36C. 1977), not *Columnnea filifera* (Wiehler) L.E. Skog & L.P. Kvist, *Novon* 7: 413. 1997.

***Trichantha pulchra*** Wiehler, *Selbyana* 2(1): 132, pl. 36D. 1977. **TYPE:** Type collection made from greenhouse-grown plant cultivated at MSBG, accession no. W-1910, 11 May 1975, *H. Wiehler 75267* (PUBLISHED TYPE DISTRIBUTION: Holotype: SEL; isotypes: BH, BM, GH, F, K, MO, NY, P, PMA, S, U, US, W). Origin of cultivated material: Panama. Panamá: about 19 km N of El Llano, El Llano-Carti highway, 10 Mar. 1973, *R.L. Dressler 4300*.

ACTUAL TYPE DISTRIBUTION: Holotype: SEL; isotypes: BH, C, F, GH, HBG, K, MO, NY, P, S, UC, US.

Basionym of *Columnnea pulchra* (Wiehler) L.E. Skog, Ann. Missouri Bot. Gard.: 879. 1979.

**Trichantha tenella** Wiehler, Gesneriana 1: 95, fig. 34. 1995. **TYPE:** Ecuador. Carchi: Maldonado, 2 km E of town, on boulders along Río San Juan, 19 Apr. 1993, H. Wiehler & GRF Expedition 93129 (PUBLISHED TYPE DISTRIBUTION: Holotype: GES).

ACTUAL TYPE DISTRIBUTION: Holotype: SEL. Synonym of *Columnnea tenella* L.P. Kvist & L.E. Skog, Allertonia 6: 380. 1993. For a discussion of the relationship of the two names for this taxon, see Novon 7: 416. 1997.

**Trichantha tenensis** Wiehler, Selbyana 1(1): 39, fig. 2. 1975. **TYPE:** Type collection made from greenhouse-grown plant cultivated at University of Miami, accession no. W-1584, 11 Mar. 1973, H. Wiehler 7318 (PUBLISHED TYPE DISTRIBUTION: Holotype: US; isotype: SEL). Origin of cultivated material: Ecuador. Napo: above Misión Evangelica, past Hacienda Dos Ríos, about 4 km N of Tena, 1971, H. Wiehler 71122a.

ACTUAL TYPE DISTRIBUTION: Holotype: US; isotypes: F, GH, K, NY, QCA, S, SEL, U, US.

Basionym of *Columnnea tenensis* (Wiehler) B.D. Morley, Garden (London) 100: 438. 1975.

#### ACKNOWLEDGMENTS

This work was funded, in part, by a grant from the Elvin McDonald Research Endowment

Fund of the American Gloxinia and Gesneriad Society. Additional support was provided through generous donations from Marge Schmiel and Melissa McDowell (Selby Gardens members and volunteers), the Frelinghuysen Arboretum Gesneriad Society, the Tampa Bay Gesneriad Society, and the Pfizer Foundation. The Frank E. Duckwall Foundation, Inc., supported the imaging of the type specimens. An anonymous donor also contributed greatly to this project. We thank Jeanne Katzenstein for her time and efforts in acquiring GRF field notes and for coordinating collaboration between SEL and Dr. Hans Wiehler, before his death in March 2003. We also acknowledge the volunteer support of Carol Collier, Marilyn Gulliford, Vivienne Jafferries, Nancy Leer, Karen Shunk, and Patsy Worley with the curation and data entry related to this project. Lastly, we thank the Friends of the Gesneriad Research Foundation (Linda Massey, Melissa McDowell, and Jerry Trowbridge) for their guidance and support of this project.

#### LITERATURE CITED

- Greuter, W., J. McNeill, F.R. Barrie, H.M. Burdet, V. Demoulin, T.S. Filgueiras, D.H. Nicolson, P.C. Silva, J.E. Skog, P. Trehane, N.J. Turland and D.L. Hawksworth (eds.). 2000. International Code of Botanical Nomenclature (Saint Louis Code) adopted by the Sixteenth International Botanical Congress, St. Louis, Missouri, July–August 1999. Koeltz Scientific Books, Königstein, Germany. [*Regnum Veg.* 138.]
- Skog, L.E. and L.P. Kvist. 2000. Revision of *Gasteranthus* (Gesneriaceae). Syst. Bot. Monogr. 59: 1–118.