

A NEW SPECIES OF *AECHMEA* (BROMELIACEAE) FROM ECUADOR

*Amy Jean Gilmartin**

Aechmea tayoensis Gilmartin, sp. nov.

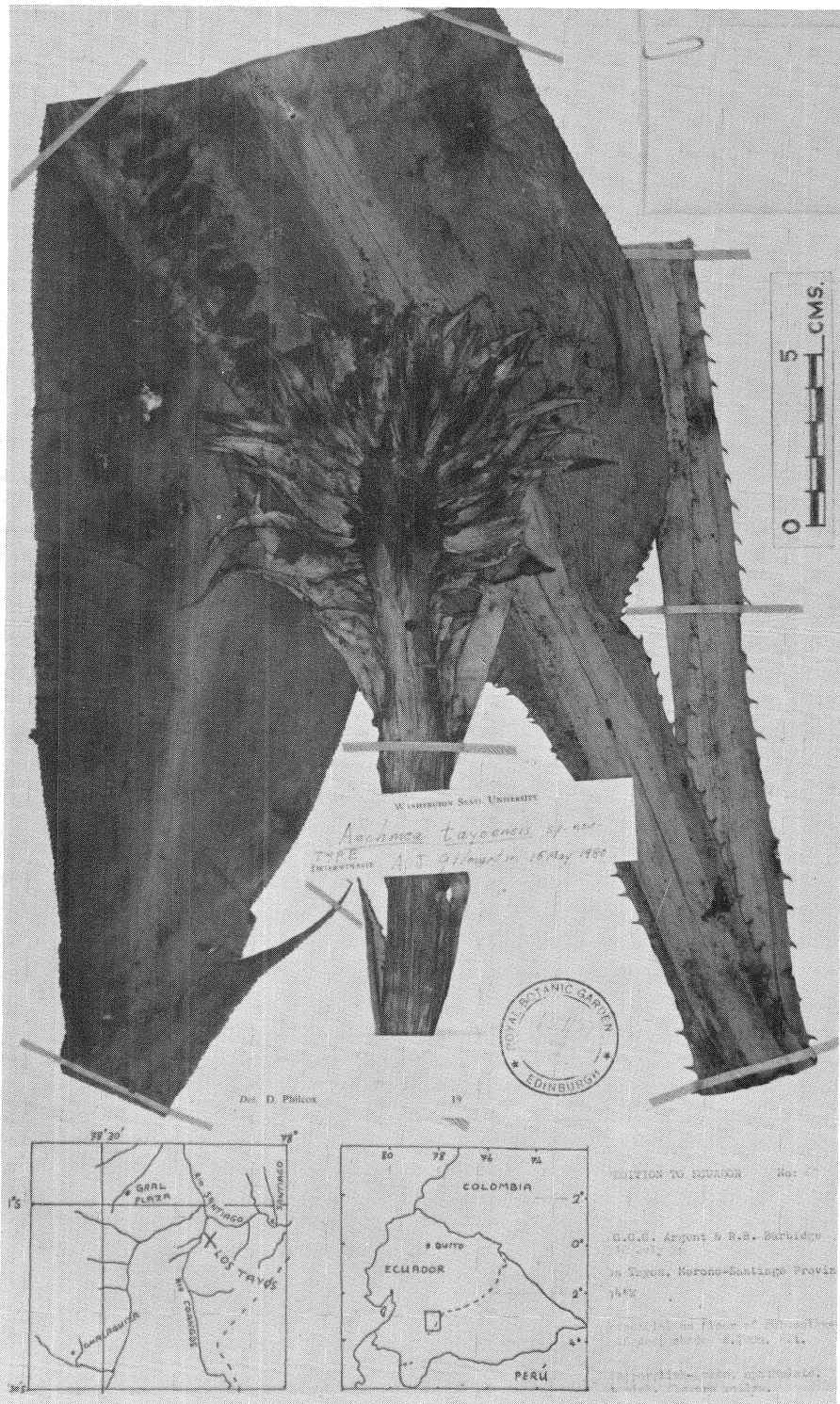
A. Achmea rubiginosa Mez, cui affinis, laminis latioribus, sepalis augustioribus differt.

Leaves ca. 1 m long, appressed lepidote below, sheath narrower than blade, margins serrate, spines 3-4 mm long, blades 12-15 cm long, margins serrulate. Scape erect, short, stout, scape-bracts erect, imbricate, ca. 7 cm long, margins serrulate. Inflorescence simple, strobilate, 12 cm long by 10 cm in diameter. Floral bracts spreading 5-6 cm long, 5-7 mm wide, lanceolate, carinate, pink, ferruginous lepidote, margins serrulate. Sepals 3 cm long by 6 mm wide, linear-lanceolate, coriaceous, lepidote, petals yellow, petal scales rudimentary folds, ovary 12-15 mm long. Fruits not known.

TYPE: *ECUADOR*: MORONA-SANTIAGO: Los Tayos, 3° 7' S, 78° 14' W, 700 m, growing terrestrially on floor of submontane forest, 12 July 1976, G. Argent & R. B. Burbidge 60 (HOLOTYPE: E).

This species, collected in the frontier area between Ecuador and Peru, is very similar to *A. rubiginosa* Mez, but the broadly triangular leaf-blades are twice as wide, the ovary is longer and sepals are narrower. The margins of the leaf-blade are without stout uncinatate spines. This species is also similar to *A. strobilata* L. B. Smith, but the inflorescence is smaller, the floral bracts are spreading without the strikingly reflexed apices of the latter species and the sepals are narrower.

* Dept. of Botany, Washington State University, Pullman WA 99163, U.S.A.



Herbarium sheet of *Aechmea tayoensis* Gilmartin, sp. nov.