

Small carrion beetles (Coleoptera: Leiodidae: Cholevinae) from burrows of *Geomys* and *Thomomys* pocket gophers (Rodentia: Geomyidae) in the United States

Stewart B. Peck  
Department of Biology  
Carleton University  
Ottawa, Ontario, K1S 5B6, Canada

Paul E. Skelley  
Florida State Collection of Arthropods  
Florida Department of Agriculture and Consumer Services  
P. O. Box 147100  
Gainesville, FL 32614-7100 USA

**Abstract.** The cholevine beetles inhabiting burrows of *Geomys* and *Thomomys* pocket gophers (Rodentia: Geomyidae) are reviewed. *Catops geomysi* n. sp. and *Ptomaphagus geomysi* n. sp. are described. Both of these species and *Ptomaphagus schwarzi* Hatch appear to be regular and obligate inhabitants of *Geomys* burrows but are not host specific. *Nemadus hornii* Hatch, *Sciodrepoides watsoni hornianus* (Blanchard), *Catops simplex* Say, *Ptomaphagus cavernicola* Schwarz, *Ptomaphagus consobrinus* (LeConte), *Ptomaphagus fesus* Horn, and *Ptomaphagus texanus* Horn were less frequently collected and are probably facultative inhabitants of *Geomys* burrows, as well as nests or dens of other small mammals. *Ptomaphagus nevadicus* Horn is an inhabitant of burrows of *Thomomys* pocket gophers in western North America. A key to the species of *Ptomaphagus* in the southeastern Gulf Coastal Plain, from non-cave habitats, is provided to aid in their identification.

### Introduction

Cholevine leiodids, the small carrion beetles, are frequently found in association with and feeding on moist decaying organic matter. In North America, these beetles are common components of leaf litter and soil habitats in mesophytic forests, and some species have become small-eyed and flightless in deep litter or soil. Nineteen species are blind obligate inhabitants of caves (Peck 1984, 1998a, 1998b). Other distinctive but cave-like habitats which are inhabited by North American cholevines are the subterranean nests of *Vespula* wasps and *Pogonomyrmex* and *Aphaenogaster* harvester ants (Peck and Gnaspini 1997), the burrows of *Gopherus* gopher tortoises and *Speotyto* burrowing owls, the nests of *Neotoma* pack rats, and the nests and burrows of mice, shrews, moles, *Dipodomys* kangaroo rats, *Citellus* ground squirrels, *Marmota* marmots, *Cynomys* prairie dogs, and *Geomys* and *Thomomys* pocket gophers (Peck 1973). The beetles probably feed as scavengers on decomposing nest matter or micro-organisms on feces in the nests and burrows of all these animals.

Pioneering investigations of insects inhabiting *Geomys* burrows were conducted in Florida by Hubbell and Goff (1939). They reported on a diverse and sometimes extraordinary set of insect inhabitants (sometimes eyeless) from the burrows of *Geomys pinetis* (Rafinesque) (Hubbell 1940). Subsequently, Ross (1944) reported on other collections from the burrows of pocket gophers in Texas. Few subsequent studies have explored the insect inhabitants of the burrow systems of these unusual rodents. Intensive sampling in Alachua and Levy Counties, Florida, during 1988-1990 by PES and others revealed that cholevine leiodids and many other arthropods inhabiting *Geomys* pocket gopher burrows were mainly active during the winter months. Some results are in Skelley and Kovarik (2001) and Skelley and Woodruff (1991).

The genus *Geomys* is in the rodent family Geomyidae, which is endemic to North and Central America. There are three genera in this family in the USA: *Geomys*, with seven species in the central and eastern USA; *Thomomys*, with five species in the western USA and Canada; *Papogeomys* (*Cratogeomys*), with one species in the southwestern Great Plains of the USA. There are 13 other species

in these genera and additional genera in Mexico and Central America (Hall 1981).

Cholevine beetles previously reported from pocket gopher burrows (Peck 1973, 1977) are: *Ptomaphagus schwarzi* Hatch in Florida; *P. nevadicus* Horn in California, Texas, Kansas, North Dakota, British Columbia, and Durango, Mexico; *P. conejera* Peck from Oaxaca, Mexico; and *P. tuza* Peck from Oaxaca, Mexico. Recent field work by P. Kovarik in Belize and W. Godwin in Panama has yielded undescribed species of *Ptomaphagus* in the burrows of pocket gophers in those countries. This paper reports on new records and new species of cholevine beetles found in the burrows of *Geomys* and *Thomomys* pocket gophers, mostly from the southeastern United States.

### Methods and Materials

An extensive sampling program for the arthropods in the burrow systems of the southeastern pocket gopher, *Geomys pinetus* (Rafinesque), was undertaken by P. W. Kovarik, P. E. Skelley, and R. H. Turnbow. This pocket gopher is found in the southern halves of Georgia and Alabama, and the northern half of Florida (Hall 1981, Fig. 15). Literature and museum specimen records for specific localities with pocket gopher populations were compiled into a database. Sightings of pocket gopher mounds by qualified individuals were also included. Locality data based on sightings were added only when there was no doubt that the mound was made by a pocket gopher. All of these data were used to produce a detailed distribution map for the pocket gopher (to be published elsewhere). With this information, a sampling plan was implemented to obtain arthropods from the burrow systems from across the range of the pocket gopher. In some cases this was hindered by apparent local extinctions or uncooperative land owners.

Collecting in the burrow systems of pocket gophers can be quite laborious. If a collector digs along the burrow system, the pocket gophers will often plug the burrow ahead of the collector. Because of this, it is usually necessary to remove the inhabitant from the burrow. There is usually only one animal in a burrow system. The prime goal of excavating the burrow system is to find the nest chamber and the toilet chamber with its dung pellets. Finding these chambers is not easy because the burrow systems may be as long as 165 meters (Brown and Hickman 1973). Such chambers may

also be at considerable depth (Hubbell and Goff 1939). In the southeast these chambers have been found up to 3.5 meters deep (personal experience PES), but are usually only 1 to 2 meters deep.

Since total excavation of a burrow is time consuming, exhausting and frequently non-productive, we chose to sample the arthropods by removing the rodent occupant and setting baited or unbaited pitfall traps in the burrows. This method is mentioned in Hubbell and Goff (1939) and Skelley and Woodruff (1991). By using this method, many sites could be sampled with a small amount of effort and with the least amount of habitat destruction. With the help of those listed in the acknowledgments, nearly 200 burrow systems have been sampled across the range of the southeastern pocket gopher using this method.

Early sampling showed that the arthropod fauna of a burrow is primarily active in the winter months. While some members of this fauna are active year round, all species could be collected in the winter. Our sampling focused on the winter season and was primarily from late November through April over several years.

This paper presents an account of the cholevine Leiodidae collected during this survey. Other papers are currently being prepared to cover other components of the arthropod fauna in the burrows (e.g., Skelley and Gordon 2001). To contribute to the completeness of this paper, we report other new data on cholevines collected in association with pocket gophers in other parts of the USA.

Specimens examined are from the collections of: ABSC, Archbold Biological Station, Lake Placid, FL; KSC, Karl Stephan, Red Oak, Oklahoma; FMNH, Field Museum of Natural History, Chicago, IL; LSAC, Louisiana State Arthropod Collection, Baton Rouge, LA; MUIC, Mississippi State University Insect Collection, Mississippi State, MS; RHTC, Robert H. Turnbow Collection, Ft. Rucker, AL; SBPC, Stewart B. Peck collection, Ottawa, ON; TAMU, Texas A & M University Insect Collection, College Station, TX; WWC, William Warner collection, Phoenix, AZ. If no collection acronym is given, specimens are deposited in the FSCA, Florida State Collection of Arthropods, Gainesville, FL. Paratypes or voucher specimens will also be placed in: MCZC, Museum of Comparative Zoology, Harvard University, Cambridge, MA; CMNC, Canadian Museum of Nature, Aylmer, Quebec, Canada; GMNH, Georgia Museum of Natural History, University of Georgia, Athens, GA; and OSUC, The Ohio State University Insect Collection, Columbus, OH.

Keys to the genera of United States Cholevinae may be found in Peck (1990). All species discussed here, except for the new species, can be keyed using Hatch (1933) or Peck (1973). A revision of the species of North American Cholevini by Peck is in progress. Specimens were studied with binocular dissecting microscopes, and illustrations made by projecting images of cleared microslide preparations of selected structures.

Only abbreviated or summarized label data is given for the previously described species. Full label data is presented for the holotypes of the new species. Paratype label data have been abbreviated for *Ptomaphagus geomysi* to eliminate excessive duplication of the collectors (all listed in acknowledgements) and habitat information (e.g. "*Geomys* burrow pitfall trap"). Complete label data for all specimens studied are available from the authors.

## Results

### Tribe Anemadini

#### *Nemadus hornii* Hatch

This species is widely distributed throughout eastern North America. There are no previous records of it occurring in pocket gopher burrows, but it was recorded from a rabbit nest (Hatch 1933), in woodchuck or fox dens, found on *Sorex* and *Blarina* shrews, and is frequently found on moist bat guano in southeastern US caves (Peck unpubl.).

**New *Geomys* burrow records.** ALABAMA: **Autauga Co.;** Prattville. **Montgomery Co.;** W. of Pine Level. **GEORGIA: Dodge Co.;** 1.1 mi. NE. of Gresson. **Grady Co.;** Beachton. **Richmond Co.;** McBean. **Thomas Co.;** Metcalf. Collections are from the months of January, February, October; 10 specimens.

### Tribe Cholevini

#### *Sciodreporides watsoni hornianus* (Blanchard)

This species is widely distributed throughout eastern North America. There are no previous reports of it from pocket gopher burrows. It is most commonly found on small animal carrion or traps baited with carrion or dung, but it has also been

captured in entrances to fox burrows (Peck unpubl.).

**New *Geomys* burrow records.** ILLINOIS. **Kankakee Co.;** Hopkins Park, with "*Geomys illinoisensis*" (FMNH). **McLean Co.;** 1 mi E. of Normal. **Livingston Co.;** 2.8 mi NNE Long Point. **NEBRASKA. Lancaster Co.;** Nine Mile Prairie. Collections are from the months of May, 2 specimens; and June, 18 specimens.

### *Catops simplex* Say

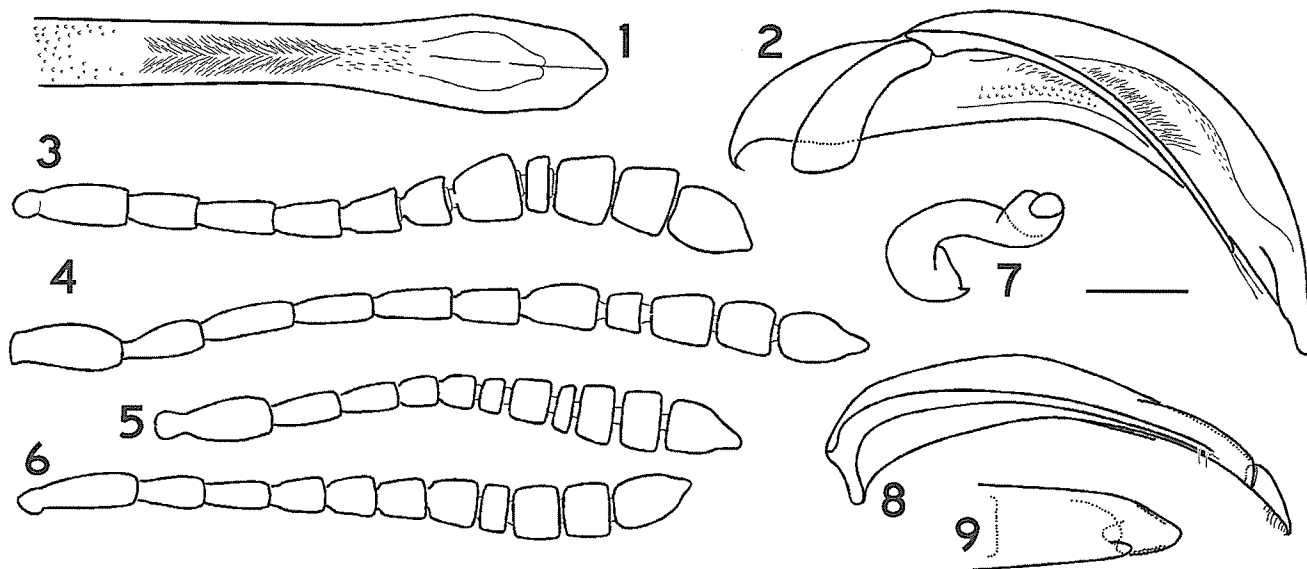
This species is widely distributed throughout eastern and western North America. There are no previous reports of it from pocket gopher burrows. It is most frequently collected with carrion or dung baited pitfall traps, and has been found in mouse nests (Peck unpubl.).

**New *Geomys* burrow records.** ALABAMA. **Macon Co.;** 6.1 mi. NW. of Hurtsboro. **FLORIDA. Lafayette Co.;** 1.2 mi. W. of Suwanee River. Collections are from the months of April, November and December; 29 specimens.

### *Catops geomysi* Peck and Skelley new species Figs. 1-3

**Type material.** Holotype male (FSCA) label data: **GEORGIA: Dodge Co.;** 1.1 mi. NE. of Gresson, 18.X.1997 to 3.V.1998, P. Kovarik & P. Skelley, *Geomys* burrow pitfall.

**Paratypes** (total 129) label data as follows. Same data as holotype (9). **ALABAMA. Coffee Co.:** 0.7-1.7 mi. E Co. Rd. 337 on Hwy. 189, 7-12.I.1999, R. Turnbow, malt/swine feces pitfall in *Geomys* burrow (1). **FLORIDA. Alachua Co.:** Gainesville, Doyle Connor Bldg., 2-6-II-1987, P. Skelley, malaise trap (1); Austin Cary Forest, 2-9.XII.1985, Fairchild & Roberts, insect flight trap (1); 29°34.5' N, 82°29' W [Archer], 7.III.1995, R. W. Lundgren, flight barrier trap in hardwood hammock (2). **Flagler Co.:** 0.5 mi. S of St. Johns Co. line on US-1, 2.XII.1997 to 20.III.1998, Skelley and Jarrett, *Geomys* burrow pitfall (1). **Gilchrist Co.:** 7.5 mi. E of Trenton, 15.IV.1993, Lloyd R. Davis, Jr. (3). **Highlands Co.:** Archbold Biological Station, 7 mi. S of Lake Placid, 13.II.1984, M. Deyrup, malaise trap, trail 2 (1); Archbold Biological Station, 5.II.1979, H. V. Weems, Jr., Sylvia Halkin, FIT (1).



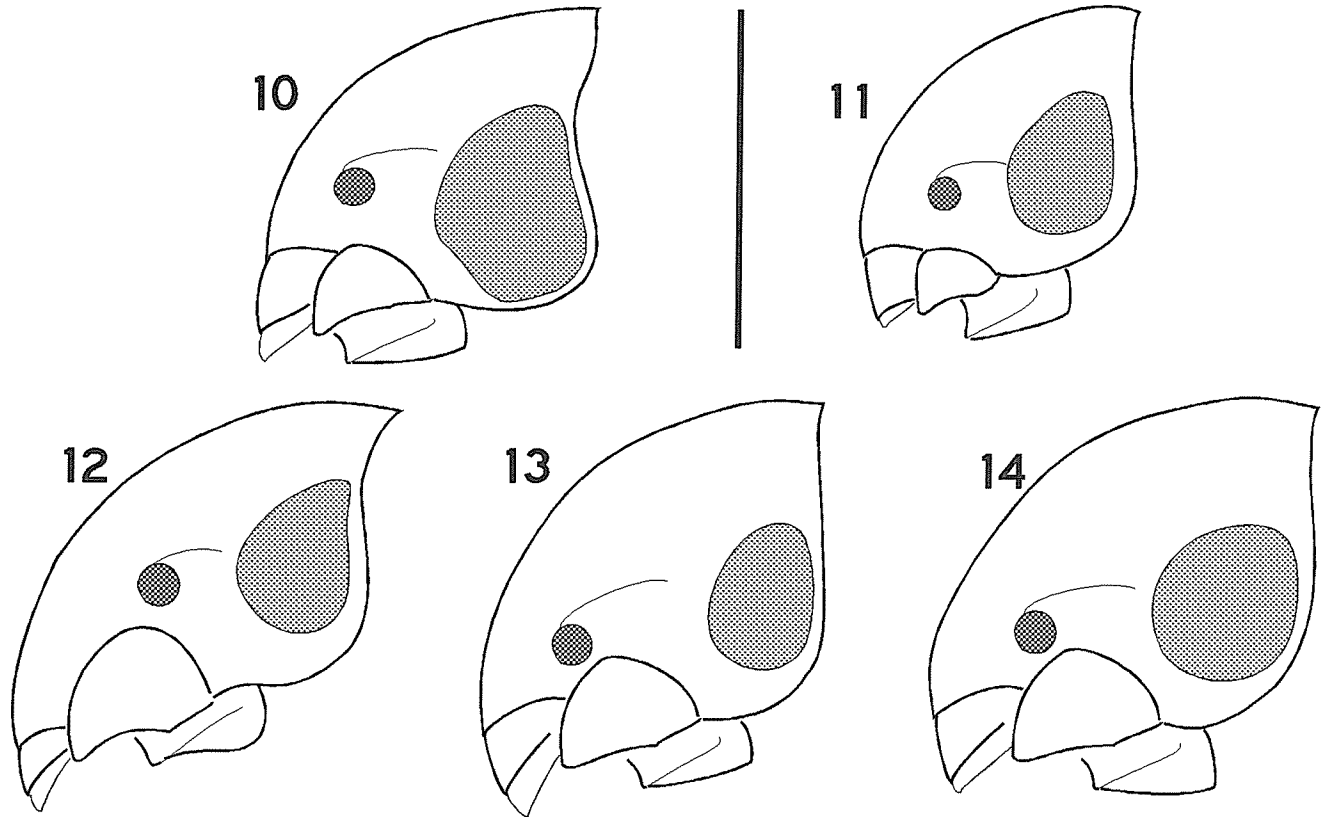
Figures 1-9. Terminalia and antennae. 1-2). Terminalia of *Catops geomysi* Peck and Skelley, 1.) dorsal view of aedeagus, 2.) lateral view of aedeagus. 3-6). Antenna of 3.) *C. geomysi*, 4.) *Ptomaphagus geomysi* Peck and Skelley, 5.) *P. schwarzi* Hatch, 6.) *P. cavernicola* Schwarz. 7-9) Terminalia of *P. geomysi*, 7.) spermatheca, 8.) lateral view of aedeagus, 9.) dorsal view of aedeagus tip. Line = 0.2 mm.

**Leon Co.:** 5 mi. E of Tallahassee, 6.VII.65, W. Suter (2); Tall Timbers Research Station, 13-20.III.1972, D. Harris, pitfall, Rep 2 (1). **GEORGIA. Richmond Co.:** McBean, 0.1 mi W Bennoch Mill & Horseshoe Rd. 1.II to 2.III.1999, P. J. Harpootlian (1). **Screven Co.:** 15.4 mi. S Hwy 301 on Hwy 24 (W. of Blue Springs), 8.II to 10.III.1999, P. J. Harpootlian, *Geomys* burrow pitfalls (3). **Thomas Co.:** S of Thomasville, 1.8 mi. S Metcalf Rd. on Springhill Rd., 10-17.XI.1996, P. Kovarik & P. Skelley, *Geomys* burrow pitfall (1). **MISSISSIPPI. Oktibbeha Co.:** Dorman Lake, 23.IV.1981, G. L. Snodgrass, hardwood litter (1 female, MUIC). **OKLAHOMA. Latimer Co.:** Near Red Oak, IX.1986 (4); XI.1986 (9); XII.1986 (60); I.1987 (32), all collected by Karl Stephan from pitfall traps in prairie unbaited or baited with dead shrews. **TEXAS. Brazos Co.:** College Station, Lick Creek Park, 31.I-11.XI.1998, M. Yoder *et al.*, malaise trap (2, TAMU); Lick Creek Park, 21.I.1995, R. Garces, malaise trap (1, TAMU); Hwy. 30 at Navasota River, 22.III.1978, R. Anderson, roadside sweeps, (1, TAMU). **Tyler Co.:** 2.8 mi W, 1.9 mi N Spurger, Big Thicket Preserve, Beech Woods, 12.I.1988, R. S. Anderson, beech-magnolia litter (1, SBPC). Most paratypes are deposited in FSCA, others will be deposited in SBPC, CMNC, FMNH, RHTC, MCZC, OSUC and GMNH.

**Diagnosis.** The species is most readily distinguished by its slightly reduced eyes, elongate and thin antennae (Fig. 3), details of the male aedeagus,

its habits of living with pocket gophers (see discussion below), and by being flight active in winter months.

**Description.** Body length 3.5-3.9 mm; width 1.9-2.1 mm. Head, pronotum, elytra and appendages light to dark brown in color. Head, pronotum, and elytral surface appearing granular (caused by setal sockets); densely covered with setae of medium length. Antenna (Fig. 3) elongate; clearly reaching beyond base of pronotum when laid back; antennomere II and III shorter than I; III longer than II; slightly decreasing in length and increasing in width from III to IV; VII much larger, nearly as wide as long; VIII smaller, very transverse; IX and X large, broadest at apex, similar in size and shape; XI rounded, tapering to apex. Eyes pigmented; somewhat reduced, lateral diameter 3 times length of space between anterior margin of eye and edge of socket of antenna. Pronotum widest just before middle, 5/7 as long as wide; apex slightly narrower than base; front angles broadly rounded, hind angles narrowly obtuse. Elytra widest near middle; posterior half with vague longitudinal lines created by linear areas without setae. Legs long, thin. Flight wings fully formed and functional. Male first to third pro- and meso-tarsomeres lightly expanded, first wider than second. Male femora without tooth-like tubercle; mesotibia lightly curved. Male and female abdominal sternites without median dimple, female terminal sternite without median emargination. Aedeagus in lateral view (Fig. 2)



Figures 10-14. Lateral view of heads of *Ptomaphagus* spp. 10.) *P. texanus* Melander. 11.) *P. consobrinus* (Leconte). 12.) *P. cavernicola* Schwarz. 13.) *P. geomysi* Peck and Skelley. 14.) *P. schwarzi* Hatch. Line = 0.5 mm.

widest before middle; tapering to blunt tip; in dorsal view (Fig. 1) widest before apex; tapering to obtusely angled blunt tip, parameres shorter than median lobe, with two terminal setae; internal sac with abundant tiny sclerotized teeth and central area with massed thin spines.

**Etymology.** This species is named for the habit of living in burrows of *Geomys* pocket gophers.

**Discussion.** It is worth giving additional data provided by Karl Stephan (*in litt.* 1987) about the collection of a very large Oklahoma series. The habitat was a large treeless grassland. The specimens were caught in a pit trap which was alternately unbaited or contained a dead shrew, and which was at the corner of a building housing a water booster pump. Under the trap was a network of small mammal tunnels (of *Geomys* pocket gophers), in which the beetles were also found. The trap was more effective when covered with a board.

The species was collected either in insect flight traps or at carrion baits or in burrows of at least three species of *Geomys*. Excluding the *Geomys* burrow specimens, the collections are all from fall,

winter, or spring months. We think that it is significant that K. Stephan collected none in baited pitfall traps after the third week of January in an extensive trapping program in Oklahoma. We assume that *Geomys* burrows are the usual habitat of the beetle and that adults leave the burrows in late fall, winter, or early spring months and disperse, probably seeking new burrow systems. Possible exceptions are the records from Archbold Biological Station, Highlands County, Florida, and Dorman Lake, Oktibbeha County, Mississippi, which are seemingly beyond the range limits of *Geomys*. This suggests that other habitats, such as rodent burrows in general, may be used by the species. Specimens from Mississippi, Alabama, Florida and Georgia can not be separated from those from Oklahoma and Texas. We suggest that this disjunction in distribution is an artifact of inadequate collecting in intermediate localities, in both open grassland habitats with bait traps or flight intercept traps in the winter and in pocket gopher burrows. But, we also note that the intervening area is mostly one of low topography and with alluvial soils of the Missis-

sippian Embayment, which is an area with few habitats suitable for pocket gophers.

### Tribe Ptomaphagini

The species of *Ptomaphagus* from non-cave habitats in the southeastern Gulf Coastal Plain can now be separated with the following key.

1. Eye unpigmented, greatly reduced; trogllobites (obligate cave inhabitants) ..... [see key in Peck, 1973]
- Eye pigmented, partly reduced or normal sized, may or may not live in caves ..... 2
- 2(1). Antennomere VI very elongate (Fig 4), length two times width; living in pocket gopher burrows ..... *P. geomysi* n.sp.
- Antennomere VI length less than two times width, usually nearly quadrate or transverse ..... 3
- 3(2). Body shortened; pronotum two times wider than long; elytral length almost equal to width; living with harvester ants (*Pogonomyrmex* sp) ...  
..... *P. acutus* Peck & Gnaspini
- Body elongate; pronotum nearly quadrate; elytral length about 1.5 times width ..... 4
- 4(3). Eye smaller (Figs. 11, 12, 14); ventral and posterior margin of head around eye broad throughout, or distinctly wider at front ..... 5
- Eye larger (Fig 10); ventral and posterior margin of head around eye narrow, nearly same width throughout; living in nests of harvester ants, in burrows of the gopher tortoise and of pocket gophers. .... *P. texanus* Melander
- 5(4). Body dark, nearly black; antennomere VI two times wider than long (Figs. 5, 6); head with wide ventral and posterior margin of eye, nearly of same width throughout (Fig. 11); usually a surface litter dweller in forests .....  
..... *P. consobrinus* (LeConte)
- Body pale brown to dark red-brown; antennomere VI nearly quadrate or elongate; head with margin posterior to eye narrower than margin ventral to eye (Figs. 12, 14) ..... 6
- 6(5). Body dark brown; antennomere VI longer than wide (Fig. 6); eye occupying half or more of the distance between the posterior margin of the head and the antennal socket (Fig. 12); usually in caves, but also in other habitats .....  
..... *P. cavernicola* Schwarz
- Body light brown; antennomere VI wider than long, can be nearly quadrate (Fig. 5); eye occu-

pying less than half of the distance between the posterior margin of the head and the antennal socket (Fig. 14); usually living in pocket gopher burrows ..... *P. schwarzi* Hatch

### *Ptomaphagus cavernicola* Schwarz Figs. 6, 12

This species is widely distributed throughout eastern North America from South Carolina and Florida westward to Iowa and Texas, and into northeastern Mexico. Almost all previous records for this species were from caves, but a few have been taken from forest litter, and in flight intercept traps in forests (Peck 1973, 1982a, 1982b). The following is the first record from a rodent burrow.

**New *Geomys* burrow records. Florida. Dixie Co.:** S. of Jena. December; 1 specimen.

### *Ptomaphagus consobrinus* (Leconte) Fig. 11

This species is widely distributed across the southeastern Coastal Plain from New Jersey south to Florida, and west to Oklahoma and Texas, with records needing verification from Colorado and west Texas (Peck 1973). It is usually taken in litter or in dung baited pitfall traps and a few records exist for specimens from the entrances to gopher tortoise burrows. There are no previous records from pocket gopher burrows.

**New *Geomys* burrow records. ALABAMA. Houston Co.:** Along Route 95. **Macon Co.:** NW of Hurtsboro. **Montgomery Co.:** W. of Pine Level. **Russell Co.:** NW of Seale. **FLORIDA. Alachua Co.:** Gainesville. **Calhoun Co.:** NW corner of county. **Gilchrist Co.:** N of Bell. **Flagler Co.:** Along US-1 nr. I-95. **Jackson Co.:** Dellwood. **Leon Co.:** Near Tallahassee, Miccosukee. **Levy Co.:** SW. of Archer. **Liberty Co.:** S of Gadsden County on Rt-12. **Okaloosa Co.:** Deerland. **Santa Rosa Co.:** Munson. **St. Johns Co.:** Along Route 204 nr. I-95. **Taylor Co.:** Perry. **GEORGIA. Baker Co.:** 8 mi. SW of Newton. **Charlton Co.:** Folkston. **Dodge Co.:** NE of Gressston. **Grady Co.:** Beachton. **Marion Co.:** Pine Knot Creek. **Screven Co.:** Along Highway 24. **Talbot Co.:** N of Mauk. **Thomas Co.:** Metcalf. **LOUISIANA. Natchitoches Parish.** 1 mi NNE Lotus (1, LSAC). **TEXAS. Palo Pinto Co.:** Mineral Wells. Collections are from winter months;

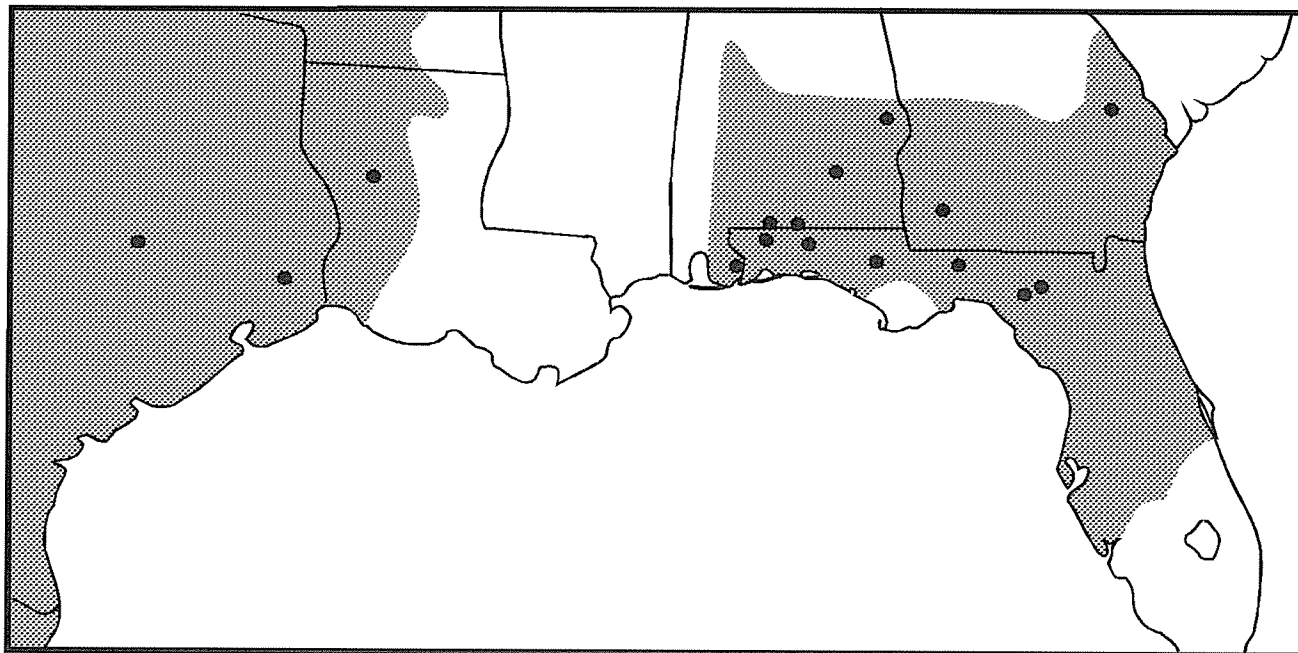


Figure 15. County distribution map for *Ptomaphagus geomysi* Peck and Skelley. Shaded area represents the range of the southeastern pocket gopher, *Geomys pinetus* (Rafinesque), and other species to the west..

92 specimens collected, usually one per burrow, with up to 29 in a single burrow.

### *Ptomaphagus fesus* Horn

This species is widely distributed in the southwestern USA, from west Texas, through New Mexico, Arizona, and California to Colorado, Utah, and Idaho. It is taken in carrion baited pitfall traps and at lights. It was previously known from nests and burrows of ground squirrels, prairie dogs, and kangaroo rats (Peck 1973).

**New *Geomys* burrow records.** **NEW MEXICO.** **Chaves Co.:** Mescalero Sands, 4-7.I.1999, Godwin and Yoder, *Geomys* burrow pitfall traps (5, TAMU); White Sands National Monument, 6.I.1999, Godwin and Yoder, *Geomys arenarius* nest (13, TAMU).

### *Ptomaphagus geomysi* new species

Figs. 4, 7-9, 15

**Type material.** Holotype male (FSCA) label data: **FLORIDA. Santa Rosa Co.,** S of Munson, 4.3 mi. S Jct. Rt-4 & Rt-191 on Sandy Landing Rd.,

1.III to 10.IV.1999, Skelley, Kovarik, & Turnbow, *Geomys* burrow pitfall.

All paratypes (total 211) were collected in *Geomys* burrows by those people listed in the acknowledgement, abbreviated label data as follows (Fig. 15). **ALABAMA. Baldwin Co.:** Seminole, ca. 2 mi. W FL. St. line on US 90, 15.XI-27.XII.1997 (2) and 19.I.-5.IV.1998 (2). **Coffee Co.:** 2.3 mi. E jct. CR-337 on Hwy-189, 20-28.I.1999 (4); 0.7 mi. E jct. CR-337 on Hwy-189, 7-12.I.1999 (9). **Covington Co.:** Wing, 1.5mi.NW, 18-20.I.1998 (1). **Escambia Co.:** 8 mi. ESE of Brewton, 0.5 mi. W CR-19 on Nalty Rd., 20.XII.1998 to 2.I.1999 (1); 8 mi. ESE of Brewton, 1.1 mi. S CR-4 on CR-19, 22.XI-6.XII.1998 (7); 8 mi. ESE of Brewton, 1.5 mi. S CR-4 on CR-19, 3-19.I.1999 (1). **Russell Co.:** 3.5 mi. NW of Seale; 1mi.SW Rt-169 on CR-22 [Sandfort], 30.I-14.II.1999 (2) and 1.III-12.IV.1999 (1). **FLORIDA. Calhoun Co.:** 5.1 mi. W of Clarksville, 8-22.XII.1996 (4); W of Chason; 5.3 mi. W Rt-73 on Rt-274 [7.3 mi. E jct. Rt-167], 3-18.I.1999 (4). **Jackson Co.:** SW of Marianna, 2.8 mi. N of Calhoun Co. line on CR-167, 7-8.XII.1999 (1). **Leon Co.:** vic. Woodville; 0.9mi.E.Rt. 363 on Natural Wells Rd., 10-22.I.1998 (3). **Ocala Co.:** Deerland, 2.8mi.W of Walton Co. line on US 90, 17-31.XII.1991 (14) and 29.XII.1992 (4) and 30.XII.1992 to 5.I.1993 (16) and 5-12.I.1993 (4) and 12-22.I.1993 (2). **Santa Rosa Co.:** 2.2 mi. N of Harold, S boundary of Blackwater R. St. For. WMA,

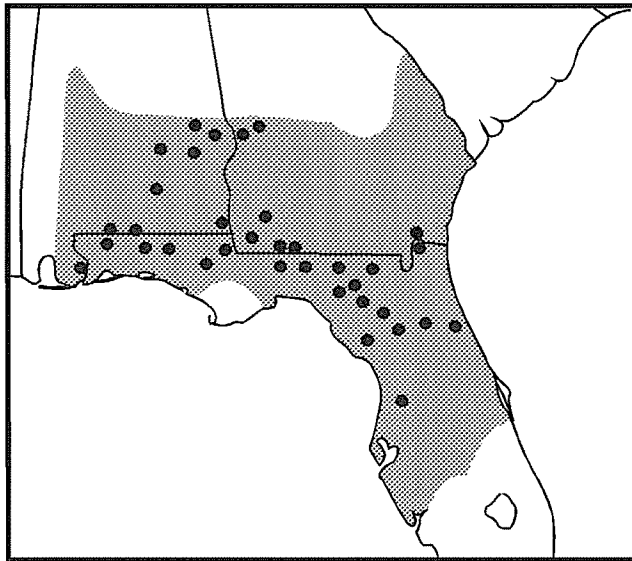


Figure 16. County distribution map for *Ptomaphagus schwarzi* Hatch. Shaded area represents the range of the geomyid rodents.

6-20.XII.1998 (1) and 19.XII.1998 to 3.I.1999 (2) and 1.III-10.IV.1999 (3); 6.9 mi. N of Harold, 0.3 mi. W Bryant Bridge Rd. & Bud Bass Rd., 20.XII.1998 to 2.I.1999 (1); N of Harold; 0.8 mi. N on Deaton Bridge Rd., 5-20.XII.1998 (3); 1.4 mi. NW of Munson on Rt-191, jct. Amos Cabannis Rd., 22.XI-6.XII.1998 (11) and 6-20.XII.1998 (4); 2 mi. NW of Munson, 0.5 mi. N Amos Cabannis Rd., 21.XI-6.XII.1998 (4) and 6-20.XII.1998 (2) and 20.XII.1998 (1); 2.2 mi. N of Munson, 1 mi. E Rt-191 on Green Rd., 20.XII.1998 to 2.I.1999 (6) and 3-19.I.1999 (3) and 19.XII.1998 to 3.I.1999 (3) and 1-III-10-IV-1999 (3); 2.5 mi. NW of Munson, 0.2 mi. S Big Juniper Ck. on Rt-191, 3-19.I.1999 (1); 2.5 mi. NW of Munson, 0.4 mi. S Big Juniper Ck. on Rt-191, 20.XII.1998 to 2.I.1999 (1); 5.2 mi. S of Munson, Bryant Bridge Rd. N of Alligator Creek, 20.XII.1998 (1); S of Munson, 2.8 mi. S jct. Rt-4 & Rt-191 on Sandy Landing Rd., 19.XII.1998 to 3.I.1999 (6) and 3-18.I.1999 (7) and 1.III-10.IV.1999 (6); S of Munson, 4.3 mi. S jct. Rt-4 & Rt-191 on Sandy Landing Rd., 1.III-10.IV.1999 (6); S of Munson, 4.7 mi. S jct. Rt-4 & Rt-191 on Sandy Landing Rd., 19.XII.1998 to 3.I.1999 (9) and 3-18.I.1999 (4); S of Munson, 4.9 mi. S jct. Rt-4 & Rt-191 on Sandy Landing Rd., 20.XII.1998 to 2.I.1999 (1). **Suwannee Co.:** 5.3 mi. W of O'Brien (US-29) on Rt.349 (jct.220th Trail), 15-23.XII.1998 (5). **Taylor Co.:** W of Perry airport, 0.7 mi. W Rt- 362 & Rt-361A, 22.II-4.III.1997 (1) and 4-29.III.1997 (1) and 29.III-6.V.1997 (7). **GEORGIA. Baker Co.:** 8 mi. SW of Newton, Ichauway,

xeric area, 16-17.II.1997 (9) and 17-21.II.1997 (3) and 21-28.II.1997 (4) and 1-7.III.1997 (1) and 7-14.III.1997 (1) and 2-9.IV.1997 (1). **Jenkins Co.:** S of Perkins, 3.25 mi. S Burke Co. line on US-25, 21.X-20.XI.1997 (4) and 19.X.1997 to 14.I.1998 (3). Most paratypes deposited in FSCA, others in SBPC, CMNC, FMNH, RHTC, MCZC, OSUC and GMNH.

The following additional records are not paratypes. **LOUISIANA. Natchitoches Parish:** Red Dirt Wildlife Refuge, Kisaichie Bayou, 27.IX.1992, W Godwin and E. G. Riley, *Geomys breviceps* burrow (7, TAMU); 1 mi NNE Lotus, 20-28.I.2001, A. Cline and A. Tischehkin, *Geomys breviceps* burrows (16, LSAC). **TEXAS. Hardin Co.:** 1 mi. W Silsbee, 16-23.I.1993 and 23.I-7.II.1993, E. G. Riley, deer dung bait in pitfall traps in *Geomys breviceps* burrow (16, TAMU). **Milam Co.:** Gause, 3 mi. N at Sugarloaf Mt., 18.IV.1993 and 8.V-12.VI.1993, W Godwin, from *Geomys attwateri* burrow (4, TAMU).

**Diagnosis.** The exceptionally long and thin antennae and legs (especially the hind tarsi), smaller eye with transverse diameter equal to distance between its anterior margin and antennal socket, shape of the spermatheca, and habitat of *Geomys* burrows (not caves) distinguish this southeastern US species.

**Description.** Length 3.0-3.4 mm; width 1.3-1.4 mm. Color pale to dark yellowish brown. Head, pronotum, elytra finely striolate; covered with fine recumbent yellowish setae; pronotal striae transverse, elytral striae oblique. Eyes pigmented; reduced in size; their lateral diameter equal to distance from their anterior margin to edge of antennal socket. Antennae (Fig. 4) very thin and elongate, reaching well beyond base of pronotum when laid back; antennomere III longer than II and IV, IV and V subequal, VI and VII of equal length but VII wider (some Texas specimens have VI shorter than VII), VIII trapezoidal, IX longer and wider than X, XI conical at apex. Pronotum widest before base, 1.5 times wider at base than long. Elytra 1.6 times longer than wide at base; widest slightly behind base; external apical angles effaced; apex obliquely truncate in both sexes; inner apical angle acute. Flight wings fully formed and apparently functional. Mesosternal keel present, low in profile. Legs elongate, male metafemur without tooth; metatarsomeres conspicuously long and thin. Aedeagus in lateral view (Fig. 8) widest before middle, tapering to downcurved tip; tip in dorsal view (Fig. 9) obliquely truncate and blunt; internal sac with basal bulb, flagellum long, thin, tubular. Spermatheca