

A journal of world insect systematics

INSECTA MUNDI

1089

Anthaxia (Anthaxia) amandae (Coleoptera: Buprestidae:
Buprestinae), a new species from Mallorca, Spain

Graham J. Holloway

Cole Museum of Zoology, School of Biological Sciences, HLS Building, University of Reading,
Whiteknights, Reading RG6 6EX, UK

Date of issue: December 20, 2024

Center for Systematic Entomology, Inc., Gainesville, FL

Holloway GJ. 2024. *Anthaxia (Anthaxia) amandae* (Coleoptera: Buprestidae: Buprestinae), a new species from Mallorca, Spain. *Insecta Mundi* 1089: 1–6.

Published on December 20, 2024 by
Center for Systematic Entomology, Inc.
P.O. Box 141874
Gainesville, FL 32614-1874 USA
<http://centerforsystematicentomology.org/>

INSECTA MUNDI is a journal primarily devoted to insect systematics, but articles can be published on any non-marine arthropod. Topics considered for publication include systematics, taxonomy, nomenclature, checklists, faunal works, and natural history. *Insecta Mundi* will not consider works in the applied sciences (i.e. medical entomology, pest control research, etc.), and no longer publishes book reviews or editorials. *Insecta Mundi* publishes original research or discoveries in an inexpensive and timely manner, distributing them free via open access on the internet on the date of publication.

Insecta Mundi is referenced or abstracted by several sources, including the Zoological Record and CAB Abstracts. *Insecta Mundi* is published irregularly throughout the year, with completed manuscripts assigned an individual number. Manuscripts must be peer reviewed prior to submission, after which they are reviewed by the editorial board to ensure quality. One author of each submitted manuscript must be a current member of the Center for Systematic Entomology.

Guidelines and requirements for the preparation of manuscripts are available on the *Insecta Mundi* website at <http://centerforsystematicentomology.org/insectamundi/>

Chief Editor: David Plotkin, insectamundi@gmail.com
Assistant Editor: Paul E. Skelley, insectamundi@gmail.com
Layout Editor: Robert G. Forsyth
Editorial Board: Davide Dal Pos, M. J. Paulsen, Felipe Soto-Adames
Founding Editors: Ross H. Arnett, Jr., J. H. Frank, Virendra Gupta, John B. Heppner, Lionel A. Stange, Michael C. Thomas, Robert E. Woodruff
Review Editors: Listed on the *Insecta Mundi* webpage

Printed copies (ISSN 0749-6737) annually deposited in libraries

Florida Department of Agriculture and Consumer Services, Gainesville, FL, USA
The Natural History Museum, London, UK
National Museum of Natural History, Smithsonian Institution, Washington, DC, USA
Zoological Institute of Russian Academy of Sciences, Saint-Petersburg, Russia

Electronic copies (online ISSN 1942-1354) in PDF format

Archived digitally by Portico.
Florida Virtual Campus: <http://purl.fcla.edu/fcla/insectamundi>
University of Nebraska-Lincoln, Digital Commons: <http://digitalcommons.unl.edu/insectamundi/>
Goethe-Universität, Frankfurt am Main: <http://nbn-resolving.de/urn/resolver.pl?urn:nbn:de:hebis:30:3-135240>

This is an open access article distributed under the terms of the Creative Commons, Attribution Non-Commercial License, which permits unrestricted non-commercial use, distribution, and reproduction in any medium, provided the original author(s) and source are credited.
<https://creativecommons.org/licenses/by-nc/3.0/>

Anthaxia (Anthaxia) amandae (Coleoptera: Buprestidae: Buprestinae), a new species from Mallorca, Spain

Graham J. Holloway

Cole Museum of Zoology, School of Biological Sciences, HLS Building, University of Reading,
Whiteknights, Reading RG6 6EX, UK
g.holloway@reading.ac.uk
ORCID <https://orcid.org/0000-0003-0495-0313>

Abstract. A new species, *Anthaxia (Anthaxia) amandae* (Coleoptera: Buprestidae: Buprestinae), from Mallorca, Spain is described. *Anthaxia amandae* belongs to the *A. dimidiata* species group and externally very closely resembles *A. dimidiata* (Thunberg). External and internal features are presented enabling the two species to be differentiated from each other.

Key words. Dissection, median lobe, identification, taxonomy, habitus, cryptic species.

ZooBank registration. urn:lsid:zoobank.org:pub:62FFA437-8944-4300-9E8D-F71DF1004978

Introduction

Buprestidae Leach, 1815 contains over 15,500 species, making it the eighth largest beetle family (Imrei et al. 2020). Within the Buprestidae, the very large genus *Anthaxia* Eschscholtz, 1829 contains in excess of 1000 species (Bellamy 2008). *Anthaxia* is split into six subgenera, four of which occur in Spain: *Anthaxia* (35 Spanish species), *Cratomerus* Solier, 1833 (one Spanish species), *Haplanthaxia* Reitter, 1911 (ten Spanish species), and *Melanthaxia* Richter, 1949 (15 Spanish species) (Hanot 2024). Our knowledge of *Anthaxia* spp. from Mallorca is limited; indeed, Hanot (2024) only lists one species known from the Balearic Islands: *A. (Melanthaxia) rugicollis* Lucas, 1846, although the author has found *A. dimidiata* Thunberg, 1789 many times on Mallorca. In the current study, a new species from Mallorca is described belonging to the *A. (Anthaxia) dimidiata* species group (Bílý 1984).

Materials and Methods

Four specimens were studied. Dissection was carried out under a Brunel BMSL zoom stereo LED microscope and involved hooking out and withdrawing the aedeagus. Habitus images were captured at ×15 magnification using a Canon EOS 2000D camera mounted on the BMSL microscope. Images of aedeagi and the terminal tergite were captured at ×50 magnification using a Canon EOS 1300D camera mounted on a Brunel monocular SP28 microscope. After dissection, for each specimen all body parts were mounted on a card. The antennae were teased out and images were taken at ×50 magnification. All images were fed through Helicon Focus Pro version 8.2.2 focus-stacking software. Measurements were made using DsCap.Ink software version 3.90. Measurements taken:

- Body length (BL): distance from anterior margin of pronotum to the apex of the elytra.
- Body width (BW): maximum distance across the elytra
- Pronotum width (PW): maximum distance across the pronotum
- Pronotum length (PL): midline length of the pronotum
- Paramere length (PaL): distance from the anterior end of the parameres to the apex of the parameres
- Median lobe length (ML): from posterior tip to tip of one anterior stirrup.

Scale bars were added using ImageJ 1.53M (Schneider et al. 2012). A distribution map was generated using SimpleMappr (Shorthouse 2010). All examined specimens are deposited in the Museu de Ciències Naturals de Barcelona (MCNB).

Results

Anthaxia (Anthaxia) amandae Holloway, new species

(Fig. 1–2)

Type specimen. Holotype male. Spain, Mallorca, Cases de Son Real (39.737, 3.181), 16th May 2024 A. Callaghan leg., collected from wild carrot, *Dorcus carota* L. (Museu de Ciències Naturals de Barcelona, MCNB).



Figure 1. *Anthaxia amandae* holotype. A) Habitus dorsal aspect (scale bar = 1 mm). B) Antenna (scale bar = 200 µm).

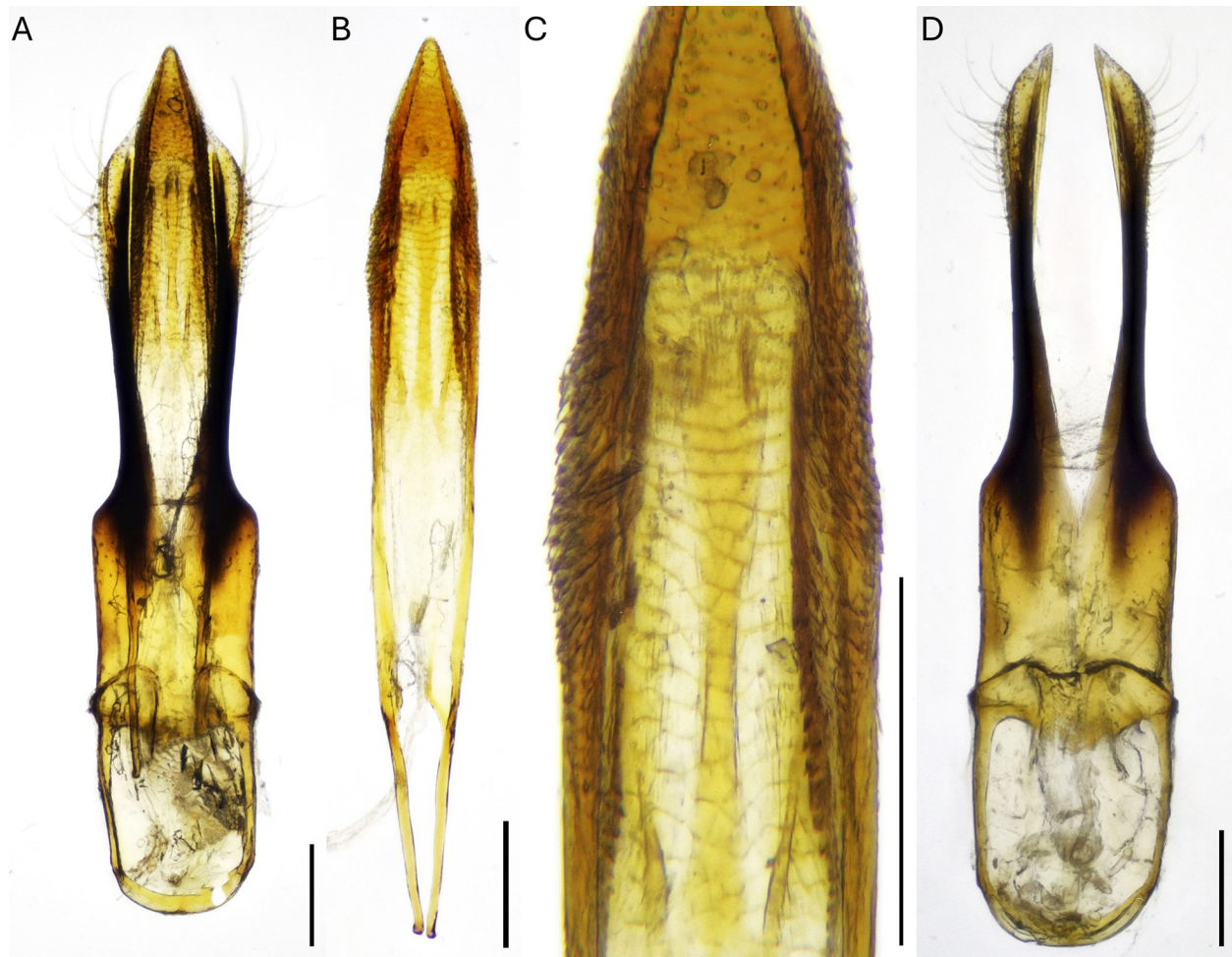


Figure 2. *Anthaxia amandae* holotype. A) Aedeagus. B) Median lobe. C) Median lobe illustrating scaly margins. D) Parameres. Scale bars = 200 μ m in all cases.

Description, external characteristics. Holotype *Anthaxia (Anthaxia) amandae* (Fig. 1A) BL = 4.75 mm, BW = 2.03 mm. Medium-sized, slim, parallel-sided (Fig. 1A). Center of frons heavily punctate, glossy black. Lateral and lower margin of frons plus clypeus iridescent golden/copper. From front edge to rear of vertex, iridescent golden through to green and finally to turquoise. Pronotum broad (PW = 2.05 mm, PL = 1.1 mm), rounded lateral margins broadest just before midpoint, slightly sinuous from midpoint back to toothed hind angles. Surface of pronotum heavily sculptured with concentric ridges, shallow punctures and micro sculpture, iridescent golden at margins and along antero-posterior midline. Inside the golden iridescence pronotum black with bluish sheen. Scutellum equilateral triangle, shining purple, densely covered in tiny punctures. Parallel-sided elytra (1.76 times long as wide) heavily rugose and punctured, bases iridescent golden to scutellum and $\frac{1}{4}$ way down elytral suture. Below and inside iridescent gold elytra deep indigo blue up to including the shoulder calluses. Disc of elytra to halfway intense fuchsia. From the fuchsia to the margins and apices of elytra deep purple tinted fuchsia. Abdominal tergites heavily punctured, intense iridescent blue. Abdominal ventrites heavily sculptured with a network of ridges, shining green, bright fuchsia margins. Antennae (Fig. 1B) serrated, with 11 antennomeres, antennomeres 1–5 shining black, antennomeres 6–11 reddish brown (segments 6 and 7 darker along longest margin). Femora bright, shining green, tibiae and tarsi shining greenish black.

Description, internal characteristics. Slim, pointed, pale brown median lobe (Fig. 2B, ML = 1.43 mm) extends well beyond paramere tips (Fig. 2A). Median lobe margins heavily scaled $\frac{1}{4}$ – $\frac{1}{2}$ mm from posterior tip (Fig. 2C).

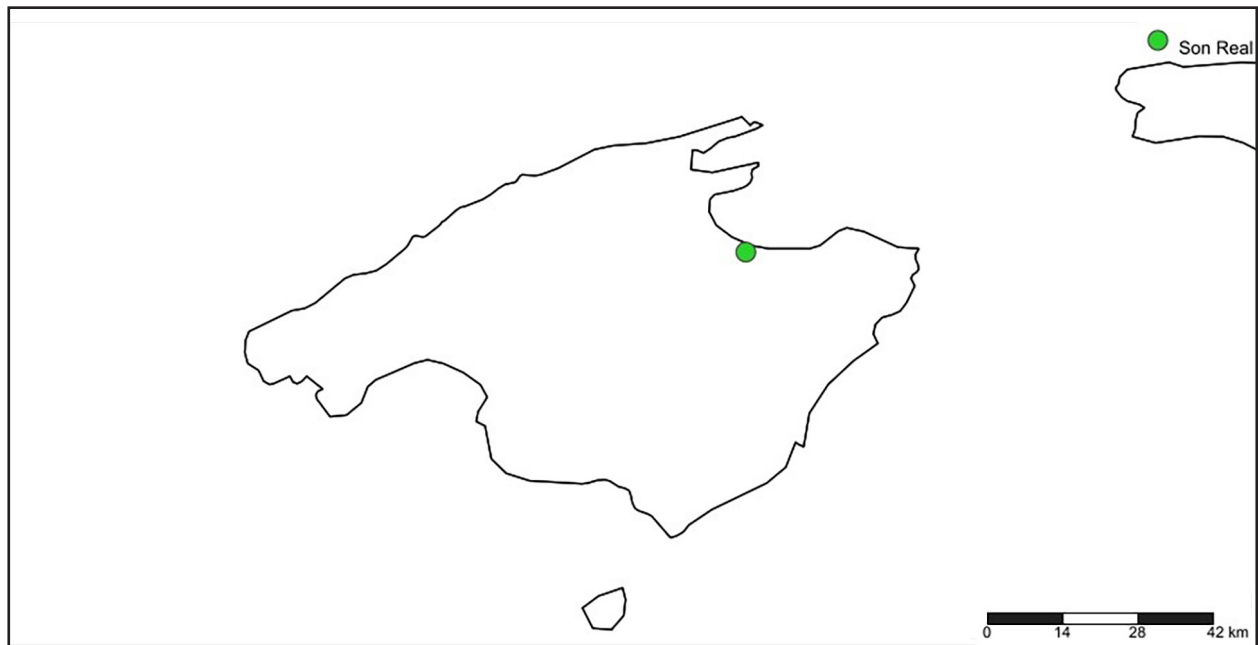


Figure 3. Map of Mallorca showing point of collection of holotype.

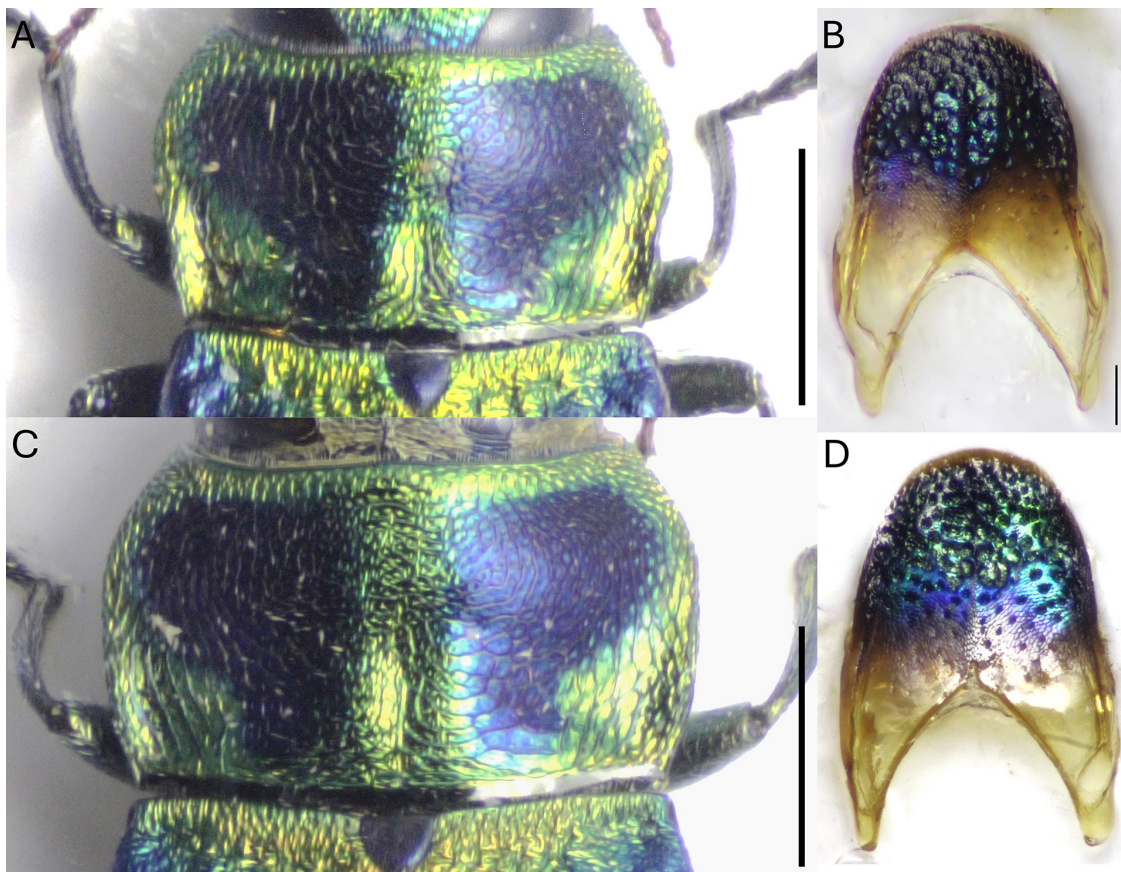


Figure 4. *Anthaxia amandae*. A) Pronotum (scale bar = 1 mm). B) Terminal tergite (scale bar = 200 μm). *Anthaxia dimidiata*: C) Pronotum (scale bar = 1 mm). D) Terminal tergite (scale bar = 200 μm).

Parameres (Fig. 2D, PaL = 1.56 mm) with pale brown anterior half, dark brown, slim posterior lobes. Outer margins of posterior lobes bulge out before sweeping in towards sharp, white apices tilting slightly inwards. Narrowly whitish outer margins at bulge towards posterior tip carrying many long, posterior curved setae.

Distribution. *Anthaxia (Anthaxia) amandae* is only known from Mallorca (Fig. 3).

Etymology. *Anthaxia (Anthaxia) amandae* is named after Professor Amanda Callaghan, Curator of the Cole Museum of Zoology (REDCZ), University of Reading, UK.

Differential diagnosis. *Anthaxia (Anthaxia) amandae* belongs to the *Anthaxia (A.) dimidiata* (Thunberg, 1789) species group as defined by Bílý (1984), and very closely resembles *A. dimidiata*. Externally, the only differences that could be detected were the lateral pronotal margins were more heavily reflexed resulting in slightly deeper outer foveae and slightly more marginal sinuosity down to the posterior corners (Fig. 4A, 4C), and the shape of the terminal tergite (Fig. 4B, 4D). In *A. amandae*, the terminal tergite margins bulge outwards from the anterior horns much more than *A. dimidiata*. Internally, the most obvious differences lie in the shorter extension of the (less heavily scaled) median lobe tip beyond the tips of the parameres in *A. dimidiata* (Fig. 5A, 5B), and the shapes of the posterior tips of the parameres. In *A. amandae*, the paramere outer margins are white from where they sweep outwards before the tips (Fig. 5C), with several long marginal setae at the bulge and many smaller punctures in towards the disc of the paramere tips. The outer margins of the *A. dimidiata* parameres do not bulge out



Figure 5. *Anthaxia dimidiata*. A) Aedeagus. B) Median lobe illustrating reduced scales on margins. C–D) Posterior tips of parameres. C) *Anthaxia amandae*. D) *Anthaxia dimidiata*.

before the paramere tips producing a narrower, gradually but only slightly expanding paddle before the posterior tip (Fig. 5D) compared with the broader, more accentuated paddle in *A. amandae*. The very tips of the *A. dimidiata* parameres carry tiny, but obvious extensions.

Discussion

The discovery of *A. amandae* increases the number of *Anthaxia* species in Spain to 62. Hanot (2024) lists only one *Anthaxia* species from the Balearics, *A. rugicollis*. Hanot's (2024) list is not likely to be complete, at least for Mallorca, as inspection of iNaturalist (2024) reveals seven *Anthaxia* species from Mallorca: *A. confusa* Gory, 1841, *A. croesus* Villers, 1789, *A. dimidiata*, *A. millifolii* (Fabricius, 1801), *A. parallela* Gory and Laporte, 1839, *A. rugicollis*, *A. umbellatarum* (Fabricius, 1787). With *A. amandae*, the Mallorcan list of *Anthaxia* species lies at eight. Three new species of beetles have been discovered from Mallorca in recent years: *Anthrenus amandae* Holloway, 2019, *Globicornis peckhamae* Holloway and Cañada Luna, 2023, and now *Anthaxia amandae*. All three are cryptic species confused with other, more common species, *Anthrenus pimpinellae* (Fabricius, 1775), *G. bifasciata* (Perris, 1866), and *A. dimidiata*, respectively. There is no current information to suggest that these three new species exist beyond Mallorca; in other words, all might be island endemics.

Acknowledgments

The author is very grateful to Andreas Herrmann and Chris Foster for reviewing the manuscript so efficiently.

Literature Cited

- Bellamy CL. 2008.** A world catalogue and bibliography of the jewel beetles (Coleoptera: Buprestoidea), volume 3: Buprestinae: Pterobothrini through Agrilinae: Rhaeboscelina. Pensoft Series Faunistica No. 78. Pensoft; Sofia, Bulgaria. 672 p. [p. 1260–1931]
- Bilý S. 1984.** Taxonomical and biological notes on Buprestidae from Turkey (Coleoptera). *Türkey Bitki Koruma Dergisi* 8: 143–149.
- Hanot S. 2024.** *Anthaxia* from Western Palaearctic and Middle East Region. Available at <http://www.anthaxia.eu/> (Last accessed 27th August 2024.)
- Imrei Z, Lohonyai Z, Csóka G, Muskovits J, Szanyi S, Véték G, Fail J, Tóth M, Domingue MJ. 2020.** Improving trapping methods for buprestid beetles to enhance monitoring of native and invasive species. *Forestry: An International Journal of Forest Research* 93(2): 254–264
- iNaturalist. 2024.** Observations · iNaturalist – *Anthaxia dimidiata*. Available at https://www.inaturalist.org/observations?taxon_id=709411 (Last accessed 28th August 2024.)
- Schneider CA, Rasband WS, Eliceiri KW. 2012.** NIH Image to ImageJ: 25 years of image analysis. *Nature Methods* 9: 671–675.
- Shorthouse DP. 2010.** SimpleMappr, an online tool to produce publication-quality point maps. Available at <https://www.simplemappr.net> (Last accessed 27th August 2024.)

Received October 7, 2024; accepted November 25, 2024.

Review editor David Plotkin.