

INSECTA MUNDI

A Journal of World Insect Systematics

0514

Enoclerus Gahan: predators of chemically protected ladybird beetles
(Coleoptera: Cleridae and Coccinellidae)

Jacques Rifkind

California State Collection of Arthropods
3294 Meadowview Road
Sacramento, California 95832, U.S.A.

Date of Issue: November 25, 2016

Jacques Rifkind

Enoclerus Gahan: predators of chemically protected ladybird beetles

(Coleoptera: Cleridae and Coccinellidae)

Insecta Mundi 0514: 1-5

ZooBank Registered: urn:lsid:zoobank.org:pub:D81D1F1B-CE5A-47CA-8F7E-BD865F144CE2

Published in 2016 by

Center for Systematic Entomology, Inc.

P. O. Box 141874

Gainesville, FL 32614-1874 USA

<http://www.centerforsystematicentomology.org/>

Insecta Mundi is a journal primarily devoted to insect systematics, but articles can be published on any non-marine arthropod. Topics considered for publication include systematics, taxonomy, nomenclature, checklists, faunal works, and natural history. **Insecta Mundi** will not consider works in the applied sciences (i.e. medical entomology, pest control research, etc.), and no longer publishes book reviews or editorials. **Insecta Mundi** publishes original research or discoveries in an inexpensive and timely manner, distributing them free via open access on the internet on the date of publication.

Insecta Mundi is referenced or abstracted by several sources including the Zoological Record, CAB Abstracts, etc. **Insecta Mundi** is published irregularly throughout the year, with completed manuscripts assigned an individual number. Manuscripts must be peer reviewed prior to submission, after which they are reviewed by the editorial board to ensure quality. One author of each submitted manuscript must be a current member of the Center for Systematic Entomology. Manuscript preparation guidelines are available at the CSE website.

Chief Editor: Paul E. Skelley, e-mail: insectamundi@gmail.com

Assistant Editor: David Plotkin

Head Layout Editor: Eugenio H. Nearn

Editorial Board: J. H. Frank, M. J. Paulsen, Michael C. Thomas

Review Editors: Listed on the *Insecta Mundi* webpage

Manuscript Preparation Guidelines and Submission Requirements available on the *Insecta Mundi* web-page at: <http://centerforsystematicentomology.org/insectamundi/>

Printed copies (ISSN 0749-6737) annually deposited in libraries:

CSIRO, Canberra, ACT, Australia

Museu de Zoologia, São Paulo, Brazil

Agriculture and Agrifood Canada, Ottawa, ON, Canada

The Natural History Museum, London, Great Britain

Muzeum i Instytut Zoologii PAN, Warsaw, Poland

National Taiwan University, Taipei, Taiwan

California Academy of Sciences, San Francisco, CA, USA

Florida Department of Agriculture and Consumer Services, Gainesville, FL, USA

Field Museum of Natural History, Chicago, IL, USA

National Museum of Natural History, Smithsonian Institution, Washington, DC, USA

Zoological Institute of Russian Academy of Sciences, Saint-Petersburg, Russia

Electronic copies (On-Line ISSN 1942-1354, CDROM ISSN 1942-1362) in PDF format:

Printed CD or DVD mailed to all members at end of year. Archived digitally by Portico.

Florida Virtual Campus: <http://purl.fcla.edu/fcla/insectamundi>

University of Nebraska-Lincoln, Digital Commons: <http://digitalcommons.unl.edu/insectamundi/>

Goethe-Universität, Frankfurt am Main: <http://nbn-resolving.de/urn/resolver.pl?urn:nbn:de:hebis:30:3-135240>

Copyright held by the author(s). This is an open access article distributed under the terms of the Creative Commons, Attribution Non-Commercial License, which permits unrestricted non-commercial use, distribution, and reproduction in any medium, provided the original author(s) and source are credited. <http://creativecommons.org/licenses/by-nc/3.0/>

Layout Editor for this article: Michael C. Thomas

Enoclerus Gahan: predators of chemically protected ladybird beetles
(Coleoptera: Cleridae and Coccinellidae)

Jacques Rifkind

California State Collection of Arthropods
3294 Meadowview Road
Sacramento, California 95832, U.S.A.
clerid@aol.com

Abstract. Four species of the genus *Enoclerus* (Coleoptera: Cleridae) are reported to prey on chemically protected Coccinellidae in North America. The possibility that aposematically colored *Enoclerus* also mimic prey ladybird species is discussed, and the further possibility that clerid predators acquire chemical protection through sequestration of ladybird prey's toxic alkaloids is suggested as an important avenue of investigation. The data presented are primarily based on photographs taken by non-specialists, discovered through Internet search. The crowdsourcing of natural history observations can reveal aspects of animal behavior heretofore unreported and even unsuspected.

Key Words. Clerid predation, clerid mimicry, Batesian mimicry, Müllerian mimicry, acquired distastefulness.

Introduction

This paper presents the first substantiated records of species of the genus *Enoclerus* Gahan preying on chemically protected Coccinellidae. As larvae, most Cleridae attack wood-boring beetle larvae and other lignicolous insect larvae. Adult *Enoclerus* are generalized predators and have been observed to feed upon a variety of insect prey belonging to several orders. Species in a number of genera of Cleridae mimic a remarkably broad array of noxious, aposematically colored and patterned insect models (Menier 1985; Mawdsley 1994; Rifkind 2002), and many display the reddish elytra, variously marked with white or black spots, commonly found among ladybird beetles. Although clerid mimicry has been almost exclusively characterized as Batesian, the possibility that aposematically colored *Enoclerus* may sequester poisonous chemicals derived from the haemolymph of their coccinellid prey should be considered and tested. If true, this would implicate some species of *Enoclerus* as Müllerian co-mimics in complexes with coccinellids and possibly other, similarly marked arthropods.

Material and Methods

I observed and photographed *Enoclerus* predation upon Coccinellidae on one occasion (Fig. 4). Three further instances were documented by photographers who posted their images on the Internet (Fig. 1–3). In all, four species of *Enoclerus* were observed feeding upon ladybird beetles. Voucher specimens are deposited in JNRC (Collection of Jacques Rifkind, Valley Village, California, U.S.A.).

Results

On August 17, 2014, Addison Rifkind and I observed and photographed a specimen of *Enoclerus moestus* (Klug) feeding upon a red-colored ladybird beetle (Fig. 4). The pair were on rabbitbrush (*Chrysothamnus* Nutt. sp.) in pinyon woodland (U.S.A., California, Inyo County, Hwy. 168, 7 mi E. Hwy. 395, ca. 1829 m elevation). Unfortunately, we were unable to recover the disarticulated parts of the coccinellid as they fell among the stalks of the plant, so a more precise identification of the prey was not possible. *Enoclerus moestus*, a common montane species in the western U.S., has grey- and black-marked elytra, which render it difficult to see against the pine bark upon which it is most frequently encountered. However, when it flies, or when it is moving vertically on herbaceous vegetation, its bright red ventral abdominal surface is clearly visible. This coloration may confuse or deter potential predators.

On June 3, 2014, Scott Ditzel photographed a specimen of *Enoclerus ichneumoneus* (Fabricius) preying upon the coccinellid *Cycloneda munda* (Say) in his backyard in Dallas, Georgia, U.S.A. (Fig. 1).

The pair was discovered in the early evening on the underside of an oak leaf. *Enoclerus ichneumoneus* is a common species with a broad distribution in the eastern and southern United States.

On October 10, 2002, Bruce Marlin photographed a specimen of *Enoclerus nigripes* (Say) preying upon the coccinellid *Psyllobora vigintimaculata* Say in oak-hickory forest at McKee Marsh Forest Preserve, Warrenville, Illinois, U.S.A. (Fig. 2). *Enoclerus nigripes* is a common species, broadly distributed across the eastern half of North America from Canada to Florida.

On August 8, 2014, Gail Starr photographed a specimen of *Enoclerus spinolae* (LeConte) feeding on a coccinellid beetle (*Coccinella* Linnaeus sp.) (Fig. 3). The pair was discovered on thistle (*Carduus* Linnaeus sp. ?) on S. County Rd. 31, Carter Lake, Larimar County, Colorado, U.S.A. (N 40° 20' 23", W 105° 12' 69"). *Enoclerus spinolae* is distributed across the U.S. Southwest and Midwest, and into northern México. It is associated throughout its range with Agavoideae species, and its larvae have been reported to feed on the larvae of an agave weevil *Peltophorus polymitus* Boheman in *Yucca thompsoniana* Trelease (Foster and Barr 1972). Adult *E. spinolae* are boldly marked with a black head and pronotum, and bright red elytra decorated with black maculae. Of the *Enoclerus* species documented here as predators of ladybird beetles, *E. spinolae* would appear to be the most likely mimic of coccinellid beetles.

Discussion

Coccinellidae are well known for their conspicuous and distinctive coloration. The family includes some drab-colored and cryptically marked species, some of which may be chemically unprotected, but all of the brightly colored red or orange species analyzed so far possess noxious and/or poisonous alkaloids that have been shown to repel many vertebrate and invertebrate predators (Daloze et al. 1995). Indeed, in their review of ladybird chemical defenses, Daloze et al. (1995) concluded that coccinellids “are the most versatile and prolific alkaloid producers of the insect world.” Ladybird beetles repel predators in several ways, including the emission of volatile, foul-smelling chemicals and through “reflex bleeding” which can flood the mouthparts of an attacker with alkaloid-laden haemolymph (Holloway et al. 1991). Experiments have shown that coccinellid secretions are unpalatable and potentially harmful or deadly to many species of ants and spiders, some amphibians, lizards, several species of birds, as well as some mammals (Deloze et al. 1995, and references therein). Nevertheless, despite their prodigious chemical defenses, coccinellids are not universally protected: they may be successfully preyed upon by some birds (Majerus 1994), the majority of anuran amphibians (Sloggett 2012), and, among invertebrates, by spiders (Sloggett and Davis 2010), wood ants (Sloggett et al. 1999), a pentatomid true bug (Hough-Goldstein et al. 1996), and by some species of coccinellids themselves (Sloggett and Davis 2010). Thus the palatability of Coccinellidae for predaceous *Enoclerus* does not represent an unprecedented case among invertebrates, although it is apparently rare among Coleoptera. It can be assumed that some species of *Enoclerus* have developed a true resistance to the effects of ladybird toxins (rather than tolerance for small amounts), since the quantity of alkaloid presumably ingested after disarticulation and maceration of a relatively large ladybug prey item would presumably be enough to harm or at least repel a clerid without such a physiological adaptation. Sloggett (2012) suggests that resistance to harmful coccinellid alkaloids may have evolved preferentially among generalized predators: those whose modes of predation preclude selection of specific prey items. While this criterion certainly applies to adult *Enoclerus*, which are opportunistic predators known to attack any prey item they can overcome, it applies also to Cleridae in most genera, among whom coccinellid predation has not yet been observed. The evolution of alkaloid resistance in some *Enoclerus* may be related to their diurnal predatory activity and frequenting of flowering plants, behaviors which place them in proximity to aggregations of coccinellids.

Mimicry

Although few *Enoclerus* species can be seen as exact mimics of ladybird beetles, even imperfect mimics have been shown to gain protection when their models (like coccinellids) are relatively common and/or highly toxic (Ruxton et al. 2004). *Enoclerus* often possess bright warning coloration, including among those species observed to feed upon ladybird beetles, and this may confer some protection against the predators (lizards, birds and spiders) that are presumed to exert the greatest selection pressure on diurnally active arthropods. Other Coleoptera are known to both mimic and prey on an aposematically

colored and chemically protected model. For example, the cerambycid beetle *Elytroleptus* Dugès mimics the chemically protected lycid beetle *Lycus* Fabricius, upon which it also feeds (Eisner et al. 1962). And although in this case the predator has not been shown to sequester lycid prey toxins (Eisner et al. 2008), at least one case of coleopteran predator acquisition of protective chemicals from noxious prey has been demonstrated. Eisner et al. (1997) discovered that females belonging to a genus of chemically unprotected firefly (Lampyridae) acquired a defensive steroid by consuming the males belonging to a different, chemically protected genus of firefly. The authors demonstrated that the sequestered toxin was incorporated into the beetles' haemolymph in concentrations high enough to repel predators (jumping spiders) when released through reflex bleeding. And here again, the relationship between predator and prey involves mimicry — a novel, aggressive form in this instance: the female lampyrid lures her male prey by imitating a species-specific flash response to the male's flashing "call" signal.

While most aposematically colored Cleridae are no doubt unprotected Batesian mimics of various noxious models, chemical analysis may eventually reveal that some species belong to Müllerian mimicry rings. Chemically protected Cleridae have been reported in the literature (Mawdsley and Sithole 2010) and I have observed an instance of apparent reflex bleeding in *Chariessa vestita* (Chevrolat), a clerid presumed to mimic a coccinellid or chrysomeline leaf beetle. The possibility that *Enoclerus* may gain chemical protection through the sequestration of coccinellid prey alkaloids would be worthy of investigation. It would provide a second case of chemical protection acquired by a beetle predator from its prey.

Acknowledgments

Désiré Daloze kindly responded to my request for literature. Weston Opitz provided encouragement and a helpful review. Henry Hespeneide reviewed an earlier draft of this paper and made many valuable suggestions. I am grateful to Natalia J. Vandenberg (USDA Systematic Entomology Laboratory) for coccinellid identifications. May Berenbaum provided assistance with the literature. I thank Patricia Gum once again for her expert help in preparing the figures. I extend my sincere thanks to Gail Starr (www.discoverlife.org), Scott Ditzel and Bruce Marlin for permission to use their photographs. The efforts of non-specialist nature photographers are an increasingly important resource for the discovery and documentation of insect behaviors that would otherwise remain unknown to biology. The present contribution owes its existence to such crowdsourced knowledge.

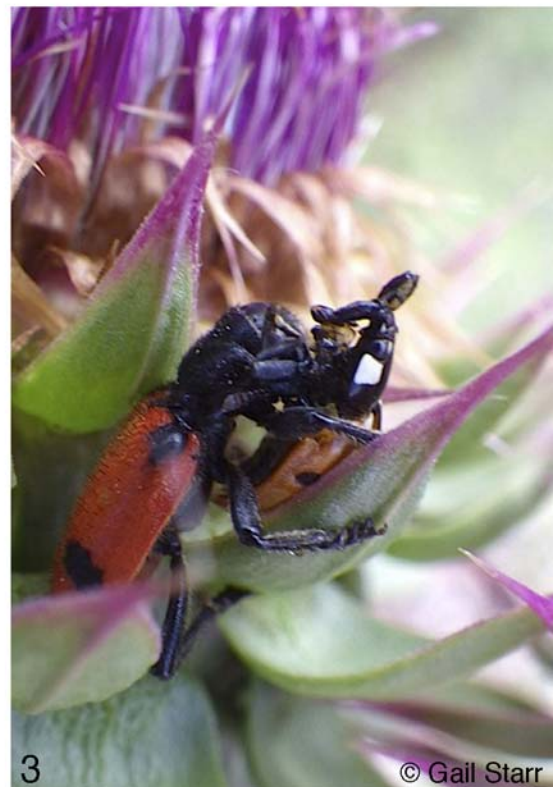
Literature Cited

- Daloze, D., J.-C. Braekman, and J. M. Pasteels. 1995.** Ladybird defence alkaloids: structural, chemotaxonomic and biosynthetic aspects (Col.: Coccinellidae). *Chemoecology* 3:173–183.
- Eisner, T., M. A. Goetz, D. E. Hill, S. R. Smedley, and J. Meinwald. 1997.** Firefly "femmes fatales" acquire defensive steroids (lucibufagins) from their firefly prey. *Proceedings of the National Academy of Sciences of the United States of America* 94: 9723–9728.
- Eisner, T., F. C. Kafatos, and E. G. Linsley. 1962.** Lycid predation by mimetic adult Cerambycidae (Coleoptera). *Evolution* 16: 316–324.
- Eisner, T., F. C. Schroeder, N. Snyder, J. B. Grant, D. J. Aneshansley, D. Utterback, J. Meinwald, and M. Eisner. 2008.** Defensive chemistry of lycid beetles and of mimetic cerambycid beetles that feed on them. *Chemoecology* 18: 109–119.
- Foster, D. E., and W. F. Barr. 1972.** Notes on the distribution and bionomics of some North American Cleridae. *Journal of the Kansas Entomological Society* 45: 122–125.
- Holloway, G. J., P. W. de Jong, P. M. Brakefield, and H. de Vos. 1991.** Chemical defence in ladybird beetles (Coccinellidae). I. Distribution of coccinelline and individual variation in defence in 7-spot ladybirds (*Coccinella septempunctata*). *Chemoecology* 2: 7–14.
- Hough-Goldstein, J., J. Cox, and A. Armstrong. 1996.** *Podisus maculiventris* (Hemiptera: Pentatomidae) predation on ladybird beetles (Coleoptera: Coccinellidae). *Florida Entomologist* 79: 64–68.
- Majerus, M. E. N. 1994.** Ladybirds. Harper Collins, London; 367 p.
- Mawdsley, J. R. 1994.** Mimicry in Cleridae. *The Coleopterists Bulletin* 48: 115–125.

- Mawdsley, J. R., and H. Sithole. 2010.** Observations on the biology of the South African checkered beetle *Aphelochroa sanguinalis* (Westwood) (Coleoptera: Cleridae). *Insecta Mundi* 0111: 1–6.
- Menier, J. J. 1985.** Quelques aspects du “mimetisme” chez les Cleridae. *Bulletin de la Société Entomologique de France* 90: 1071–1083.
- Rifkind, J. 2002.** New Central American and Mexican *Enoclerus* (Coleoptera: Cleridae). *Natural History Museum of Los Angeles County, Contributions in Science* 487: 1–16.
- Ruxton, G. D., T. N. Sherratt, and M. P. Speed. 2004.** Avoiding attack. The evolutionary ecology of crypsis, warning signals, and mimicry. Oxford University Press, Oxford; 249 p.
- Sloggett, J. J. 2012.** Predation of ladybird beetles (Coleoptera: Coccinellidae) by amphibians. *Insects* 3: 653–667.
- Sloggett, J. J., and A. J. Davis. 2010.** Eating chemically defended prey: alkaloid metabolism in an invasive ladybird predator of other ladybirds (Coleoptera: Coccinellidae). *The Journal of Experimental Biology* 213: 237–241.
- Sloggett, J. J., A. Manica, M. J. Day, and M. E. N. Majerus. 1999.** Predation of ladybirds (Coleoptera: Coccinellidae) by wood ants, *Formica rufa* L. (Hymenoptera: Formicidae). *Entomologist's Gazette* 50: 219–221.

Received October 29, 2016; Accepted November 2, 2016.

Review Editor Jiri Zidek.



Figures 1–4. *Enoclerus* species feeding on Coccinellidae. **1)** *Enoclerus ichneumoneus* (Fabricius) feeding on *Cycloneda munda* (Say); **2)** *Enoclerus nigripes* (Say) feeding on *Psyllobora vigintimaculata* Say; **3)** *Enoclerus spinolae* (LeConte) feeding on *Coccinella* Linnaeus sp.; **4)** *Enoclerus moestus* (Klug) feeding on unidentified ladybird beetle.

