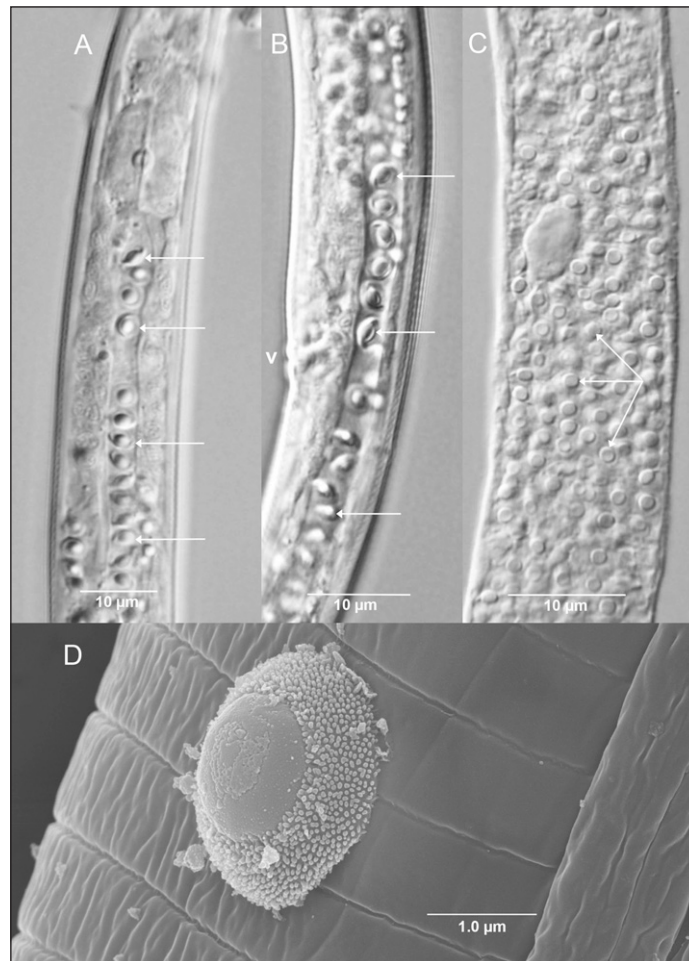


JOURNAL of NEMATODOLOGY

The Official Journal of The Society of Nematologists

Volume 45, Number 4, December 2013



Pasteuria sp. infecting *Robustodorus megadorus*

Journal of Nematology 45(4):237–330 (2013)
Hanover, Pennsylvania

ISSN 0022-300X

JOURNAL OF NEMATODOLOGY

THE OFFICIAL JOURNAL OF THE SOCIETY OF NEMATOLOGISTS

EDITORIAL BOARD

Editor-in-Chief

Nancy Kokalis-Burelle, 2014. USDA-ARS, Ft. Pierce, FL

Editors

Andreas Westphal, 2013. Julius Kühn-Institut, Münster, Germany

Zafar Handoo, 2014. USDA-ARS, Beltsville, MD

James LaMondia, 2014. The Connecticut Agricultural Experiment Station, Windsor, CT

David Shapiro-Ilan, 2014. USDA-ARS, Byron, GA

Inga Zasada, 2014. USDA-ARS, Corvallis, OR

William Crow, 2015. University of Florida, Gainesville, FL

Abigail Walter, 2015. Swedish University of Agricultural Sciences

Salliana Stetina, 2015. USDA-ARS, Stoneville, MS

Sergei Subbotin, 2015. California Department of Food and Agriculture, Sacramento, CA

Erik J. Ragsdale, 2016. Max Planck Institute, Tübingen, Germany

Axel Elling, 2016. Washington State University, Pullman, WA

Richard F. Davis, 2016. USDA-ARS, Tifton, GA

Published by the Society of Nematologists

President: Jonathan Eisenback

President Elect: Stephen Thomas

Vice-President: Byron Adams

Secretary: Andrea Skantar

Treasurer: Senyu Chen

Editor-in-Chief: Nancy Kokalis-Burelle

Executive Member: Nathan Schroeder

Executive Member: Horacio Lopez Nicora

Executive Member: Paulo Vieira

Newsletter Editor: Salliana Stetina

Webpage Editor: Roxana Myers

Journal of Nematology (ISSN 0022-300X) is published quarterly by The Society of Nematologists. For other information, visit: <http://www.nematologists.org>

Mention of a pesticide, cultivar, or commercial or proprietary product does not constitute a recommendation or an endorsement of its use by editors, author(s), their institutions, or The Society of Nematologists. Authors are responsible for statements made in the Journal, whether of fact or opinion.

Printed by The Sheridan Press, 450 Fame Ave., Hanover, PA 17331.

Cover — *Pasteuria* sp. infecting *Robustodorus megadorus*. A, Mature endospores (arrows) in the intestinal lumen at its junction with the metacarpus. B, Mature endospores (arrows) in the intestinal lumen, anterior and posterior to the vulva (v). C, Mature endospores in the body cavity of a *R. megadorus* female collected by M. W. Allen (1941). D, Scanning electron micrograph of an endospore attached to the cuticle of *R. megadorus*. See article by Ryss et al.

Sustaining Associates of
THE SOCIETY OF NEMATOLOGISTS

A&L Southern Agricultural Laboratories

David Sui (ddsui@al-southern.com)
Pompano Beach, FL

Ajay North America, LLC

Mark Leafgreen (lefgrenm@bellsouth.net)
Powder Springs, GA

Arvesta

Charles T. Schiller (cschiller@arvesta.com)
Cary, NC

BASF Plant Science LLC

Volker Mittendorf
(volker.mittendorf@basf.com)
Research Triangle Park, NC

Bayer Crop Science

Lee S. Hall (lee.hall@bayercropscience.com)
Research Triangle Park, NC

Divergence, Inc.

James P. McCarter
(mccarter@divergence.com)
St. Louis, MO

Dow Agro Sciences

James P. Mueller
(jpmueller@dow.com)
Brentwood, CA

DuPont Crop Protection

Michel A. Rivera
(michel.a.rivera@usa.dupont.com)
Newark, DE

Pasteuria BioSciences, LLC

Kelly Smith
(ksmith@pasteuriabio.com)
Alachua, FL

Pest Pros, Inc.

Randy Van Haren
(pestpros@uniontel.net)
Plainfield, WI

Syngenta Crop Protection, Inc.

David Long
(david.long@syngenta.com)
Greensboro, NC

Sustaining associate members help support The Society of Nematologists (SON) through their financial assistance, knowledge, expertise, and professional involvement in the science of nematology. For information about these companies or if you would like to become a sustaining associate member, contact a member of the Executive Board, or the SON Business Office (societyofnematologist@gmail.com).

Annual membership in the Society of Nematologists is \$60 US for regular members, \$30 for students, and \$500 for Sustaining Associates. Payment must be with a check in US currency drawn on a US bank or by Visa or MasterCard. A fee of \$9.95 will be added to all transactions. The Nematology Newsletter is included in the membership dues for regular and student members. Institutional Subscription rates are \$140/yr in the United States and \$160 outside the US. This and other information can be found at the Society's website: <http://www.nematologists.org>.

BACK ISSUES OF JOURNAL OF NEMATOLOGY

Vols. 21–34 (1989–2002). Price per issue includes postage and handling. Members: \$10.00; Non-members: \$40.00. Please indicate volumes desired and send check, money order, or credit card (VISA or MasterCard) account number and expiration date to the Society of Nematologists, Inc., 108 West Burwell Avenue, Loundonville, OH 44842

CONTENTS
JOURNAL OF NEMATOLOGY

Vol. 45, No. 4

December 2013

Contributed Papers

Taxonomy

- Redescription of *Robustodorus megadorus* with Molecular Characterization and Analysis of its Phylogenetic Position within the Family Aphelenchoididae. ALEXANDER Y. RYSS, MICHAEL A. MCCLURE, CLAUDIA NISCHWITZ, CHRISTINE DHIMAN, AND SERGEI A. SUBBOTIN----- 237
- First Record of *Steinernema kraussei* (Rhabditida: Steinernematidae) from Turkey and Its Virulence against *Agrotis segetum* (Lepidoptera: Noctuidae). CIHAN GOKCE, HUSEYIN YILMAZ, ZEYNEP ERBAS, ZIHNI DEMIRBAG, AND ISMAIL DEMIR ----- 253

Management

- Factors Affecting Furfural as a Nematicide on Turf. J. E. LUC AND W. T. CROW ----- 260
- Sunn Hemp Cover Cropping and Organic Fertilizer Effects on the Nematode Community Under Temperate Growing Conditions. JERMAINE HINDS, KOON-HUI WANG, SHARADCHANDRA P. MARAHATTA, SUSAN L. F. MEYER, AND CERRUTI R. R. HOOKS ----- 265
- Evaluation of Cover Crops with Potential for Use in Anaerobic Soil Disinfestation (ASD) for Susceptibility to Three Species of *Meloidogyne*. NANCY KOKALIS-BURELLE, DAVID M. BUTLER, AND ERIN N. ROSSKOPF ---- 272
- Abstracts from the Society of Nematologists Annual Meeting 2013 ----- 279
- INDEX to Key Words, Authors, Volume 45 ----- ii

