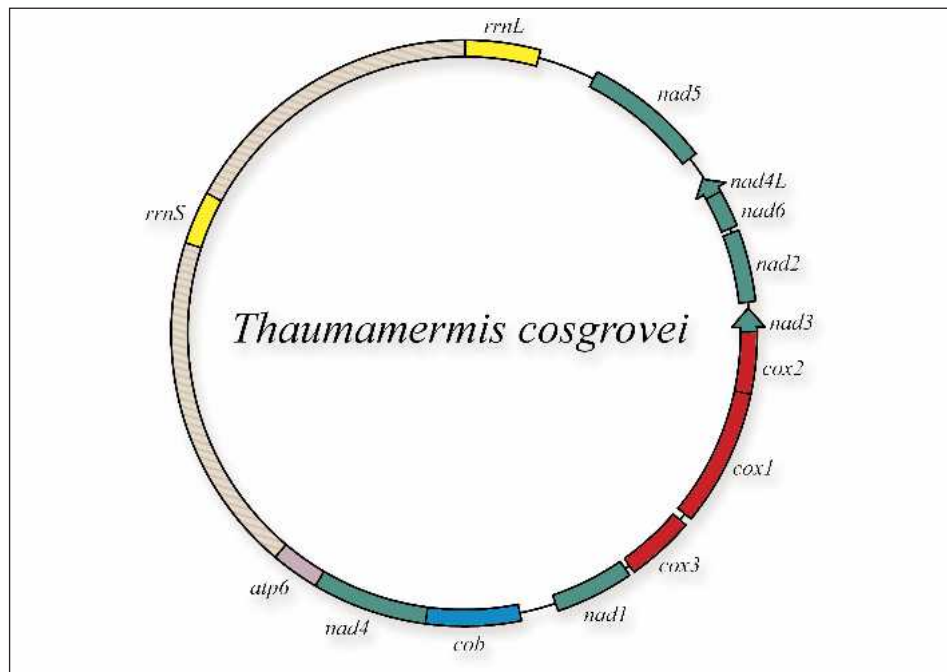


JOURNAL of NEMATOTOLOGY

The Official Journal of The Society of Nematologists

Volume 37, Number 2, June 2005



Mitochondrial genome of *Thaumamermis cosgrovei*

Journal of Nematology 37(2):131–248 (2005)
Hanover, Pennsylvania

ISSN 0022-300X

JOURNAL OF NEMATODOLOGY

THE OFFICIAL JOURNAL OF THE SOCIETY OF NEMATOLOGISTS

EDITORIAL BOARD

Editor-in-Chief

James L. Starr 2005. Texas A&M University, College Station, TX

Editors

Keith Davies 2005. IACR-Rothamsted Experimental Station, Harpenden, Herts UK
James A. LaMondia 2005. Connecticut Agricultural Experimental Station, Windsor, CT
Robert T. Robbins 2005. University of Arkansas, Fayetteville, AR
Philip A. Roberts 2005. University of California, Riverside, CA
Andrea M. Skantar 2005. USDA-ARS, Beltsville, MD
S. Patricia Stock 2005. University of Arizona, Tucson, AZ
Gregor W. Yeates 2007. Landcare Research, Palmerston North, New Zealand

Technical Editor

Patricia L. McGhee, Atlantic Beach, FL

Editorial Assistant

Patsy Bolch, Bryan, TX

Published by THE SOCIETY OF NEMATOLOGISTS

President: Terry Niblack
President-Elect: Saad Hafez
Vice-President: An MacGuidwin
Secretary: Brent S. Sipes
Treasurer: Russell Ingham
Past-President: Robin Giblin-Davis

Editor-in-Chief: James L. Starr
Newsletter Editor: Patricia Timper
Executive Member: Dorota L. Porazinska
Executive Member: Deborah Neher
Executive Member: Bradley Hyman

The Journal of Nematology (ISSN 0022-300X) is published quarterly by the Society of Nematologists. Periodical postage paid at Marceline, MO and additional Post Offices. **Postmaster:** Send change of address to Society of Nematologists, P.O. Box 311, Marceline, MO 64658. E-mail: son@mcmssys.com. Inquiries concerning subscriptions, availability of back issues, membership in The Society of Nematologists, and changes of address should be sent to the same address. For this and other information, visit the Society's website: <http://www.nematologists.org>

Mention of a pesticide, cultivar, or commercial or proprietary product does not constitute a recommendation or an endorsement of its use by editors, author(s), their institutions, or The Society of Nematologists. Authors are responsible for statements made in the Journal and Supplement, whether of fact or opinion.

Printed by The Sheridan Press, 450 Fame Ave., Hanover, PA 17331. The Journal is indexed by Kathleen K. Leabo, Port Lavaca, TX.

COVER—Transcriptional organization of the *Thaumamermis cosgrovei* mitochondrial genome. All genes (colored boxes) are encoded on the same strand except NADH dehydrogenase subunits 3 and 4L (arrowheads). Unique to this mitochondrial DNA is a large hypervariable region (hatched) identified using a rolling circle amplification technique described on page 236 of this issue. Map provided by S. Tang, M. Maduro, and B. Hyman.

Sustaining Associates of THE SOCIETY OF NEMATOLOGISTS

A&L Southern Agricultural Laboratories, Inc.

David Sui (ddsui@bellsouth.net)
Pompano Beach, FL

Ajay North America, LLC

Clint Kohis (kohisc@bellsouth.net)
Powder Springs, GA

Arvesta

Charles T. Schiller (cschiller@arvesta.com)
San Francisco, CA

BASF Agricultural Products

H. Van T. Cotter (cotterh@basf-corp.com)
Research Triangle Park, NC

BASF Plant Science LLC

Sumita Chaudhuri (chaudhs@basf.com)
Research Triangle Park, NC

Bayer Crop Science

Lee S. Hall (lee.hall@bayercropscience.com)
Research Triangle Park, NC

Divergence, Inc.

James P. McCarter (mccarter@divergence.com)
St. Louis, MO

Dow Agro Sciences

James P. Mueller (jpmueller@dow.com)
Brentwood, CA

DuPont Crop Protection

Michel A. Rivera
(michel.a.rivera@usa.dupont.com)
Newark, DE

ID Services Nematode Lab

Alan M. Butterfield
(idservicesbugman@earthlink.net)
McFarland, CA

Monsanto Company

Naag Gubbiga
(nagabhushana.g.gubbiga@monsanto.com)
Florissant, MO

Pasteuria BioSciences, LLC

Kelly Smith (ksmith@pasteuriabio.com)
Alachua, FL

Pest Pros, Inc.

(pestpros@uniontel.net)
Plainfield, WI

Syngenta Crop Protection, Inc.

Luis Payan (luis.payan@syngenta.com)
Visalia, CA

Valent BioSciences Corp.

Linda Rehberger/Prem Warrior
(linda.rehberger@valent.com)

Sustaining associate members help support The Society of Nematologists (SON) through their financial assistance, knowledge, expertise, and professional involvement in the science of nematology. For information about these companies or if you would like to become a sustaining associate member, contact the chairman of the SON Industry Committee (Van Cotter at 919-547-2678 or cotterh@basf-corp.com), a member of the Executive Board, or the SON Business Office (son@mcmssys.com).

Membership in the Society of Nematologists is \$60 US for regular members, \$30 for students, and \$500 for Sustaining Associates. For airmail delivery outside the United States, add \$15 for Canada, Mexico, Central America, and South America or \$30 for all other countries. Payment must be with a check in US currency drawn on a US bank or by Visa or MasterCard. Add \$3 for credit card transaction. The Journal of Nematology and Nematology Newsletter (postage paid) are included in the membership dues for regular and student members. Emeritus members may purchase the JOURNAL at student rates and receive the newsletter free of charge. Institutional subscription rates are \$120 per year in the United States and \$140 outside the US. This and other information can be found at the Society's website: <http://www.nematologists.org>. Volumes 1–30 of the Journal are available on CD. E-mail: son@mcmssys.com.

BACK ISSUES OF JOURNAL OF NEMATOLOGY

Vols. 21–34 (1989–2002). Price per issue includes postage and handling. Members: \$10.00; Non-members: \$40.00. Please indicate volumes desired and send check, money order, or credit card (VISA or MasterCard) account number and expiration date to the Society of Nematologists, Inc., P.O. Box 311, Marceline, MO 64658.