



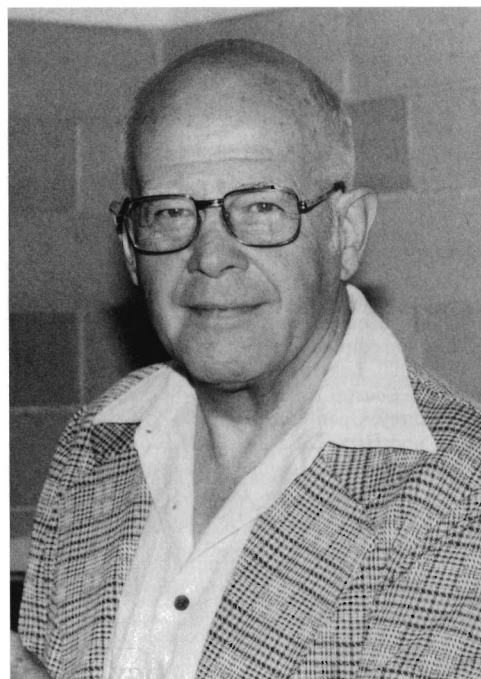
IN MEMORIAL

THE SCIENTIFIC LEGACY of
WILLIAM FRANCIS TANNER, JR.
February 4, 1917–April 9, 2000

Dr. William "Bill" Francis Tanner, Jr., a native of Milledgeville, Georgia, had resided in Tallahassee, Florida, since 1954. He is survived by his wife Julia (Rigby) Tanner, three children, William F. III, Bruce R., Julianne (Talley), and seven grandchildren. Ben Tanner, a grandson, studying at the University of Maine has intentions to follow in his grandfather's footsteps.

W. F. Tanner received his BA in geology from Baylor University in 1937, his MA from Texas Technical College in 1939, and his PhD in geology from the University of Oklahoma in 1953. He worked as an assistant geologist at Baylor University from 1935 to 1937 and at Texas Tech from 1937 to 1939, was the oil editor at the *Amarillo Times* from 1939 to 1941 and from 1945 to 1946, with the outbreak of WWII he joined the U. S. Navy and was trained as a meteorologist serving with the Navy's meteorological team in Britain where he remained until Allied victory of the European campaign, assistant professor of geology and journalism at Oklahoma Baptist University from 1946 to 1951, special instructor at the University of Oklahoma from 1951 to 1954, and a geologist with Shell Oil Company in 1954. He came to Florida State University in 1954 where he served as visiting lecturer in geology from 1954 to 1956, Associate Professor from 1956 to 1974, and as Regents Professor in Geology from 1974 until he retired in 1994. Even after retiring, he continued to teach at Florida State University as Regents Professor Emeritus, a task to which he was devoted throughout his career, and one in which he had the reputation for being organized, fair, thorough, thought-provoking, and inspiring. In 1997, while continuing his association with the Department of Geological Sciences at Florida State University, he joined the staff of the Florida Geological Survey as resident Visiting Senior Research Scientist where he remained conducting research until his death.

Bill Tanner was a *Fellow* with the American Association for the Advancement of Science (AAAS), Geological Society of America (GSA), Society of Economic Paleontologists and Mineralogists (SEPM), International Association of Sedimentology (IAS), and the American Geophysical Union (AGU). He was chairman of the 1963 SEPM interdisciplinary Inter-Society Grain Size Study Committee which established sedimentologic standards that today remain the basis for granulometry. He was not content with merely describing characteristics of sediments, but with discovering the forces (*e.g.*, eolian and hydraulic) which define the transporting mechanisms and depositional conditions. These he applied to ancient sedimentologic deposits, often contrasting with existing



William Francis Tanner

description of their actual geologic history. His transpo-depositional discoveries were based on a data base of some 1,100 sediment samples from many transpo-depositional environments analyzed over the years. He thereby developed a concerted interest in complicated wave and current coastal and fluvial processes, and also correlated such considerations to Holocene sea level changes from beach ridge granulometric results. He was particularly proud of *William F. Tanner on Environmental Clastic Granulometry*, a 1995 compilation published by the Florida Geological Survey. Sedimentology, as shall be evident, was but one teaching and research interest. He was the recipient of a multitude of lecturing accolades. From 1972 to 1990 he organized, hosted and published nine *Symposia on Coastal Sedimentology* totaling some 2,500 pages of research results, and founded and was Editor-in-Chief of *Coastal Research*, a quarterly mini-journal, from 1962 until his eyesight was impaired in 1998. Even with such impairment he continued to conduct research. On October 19, 1999 he suffered a stroke and was confined to bed under hospital care. Even so he continued dictating work for publication during his last several months. He is listed in *World Who's Who in Science* and *American Men and Women of Science*.

During his 62-year professional career he taught courses including sedimentology, stratigraphy, field methods and field camp, structural geology, aerial photographic interpre-

tation, modelling theory, coastal geology, glaciology and climate change, subsurface geological methods, and was proficiently conversant in German and Spanish and translated from Greek, Russian, and French to English. He instructed many hundreds of undergraduate students, supervised as major professor and was mentor to over 50 Masters and Doctoral students, and served on countless graduate committees. He amassed over 400 professional publications, and was an accomplished computer programmer assembling many analytical tools and numerical models. His research interests overwhelm even the accomplished professional.

W. F. Tanner conducted and published research on a wide variety of subjects including: **AERIAL PHOTOGRAPHIC INTERPRETATION**—general applications, strike and dip, sink-holes; **GEOLOGY AND ARCHAEOLOGY AND THE BIBLE**—Noah's flood, Exodus from Egypt, Indian mounds, etc.; **CLIMATOLOGY**—atmospheric change, glaciology, Holocene sea level changes, hurricanes, Little Ice Age, morphologic changes, wave climates; **COASTAL GEOLOGY**—ABC numerical model, ancient shorelines and wave environments, beach ridges and beach ridge plains, beachrock, barrier islands, breaking waves, cheniers, coastal classification, corals, equilibrium profiles, dating, erosion, gravel beaches, hurricane impacts, inlets, lagoons, Langmuir cells, littoral cells, long-term beach changes and mapping shorelines, offshore wave characteristics, origin of the Gulf of Mexico, perched barriers, ripple marks, Sabellarids, SCUBA field methods, sea level rise, sediment transport, springs, storm ridges, the surf break, terraces, transverse bars, wave refraction, wave energy, zero-energy coasts, etc.; **DRILLING**—subsurface methods and oil prospects; **FLUVIAL GEOLOGY**—bed roughness, friction factors, equilibrium profiles, helicoidal flow, hydrology, oxbows, spiral flow, etc.; **HYDROLOGY**—Froude and Reynolds number studies, Langmuir circulation, micro-velocity meter, spiral and surge flow, shear velocity, von Karman vortex trails, etc.; **GEOLOGICAL TEACHING METHODS**; **GLACIOLOGY**—causes, climate change, moraines, post-glacial emergence, etc.; **GEOMORPHOLOGY AND PALEO GEOGRAPHY**—hydraulics, lagoons, reefs, seamounts, slope retreat, terraces, etc.; **SEDIMENTOLOGY**—analytical methods, bed load transport, composite statistics, cross-bedding, deltas, dunes, eolian ripple marks and deposits, facies changes, filtering, fluvial sediments, granulometry, heavy minerals, gravels, lacustrine environments, pediments, moment measures, ripple marks, sieving vs settling, sorting, splitting error, suite statistics, truncation, etc.; **SOILS**; **PLANETARY GEOLOGY**; **STRATIGRAPHY, FORMATION AND LITHOLOGIC STUDIES**—many field studies, desilification, gypsum, limestone, sandstone, unconsolidated sediments, time record, etc. **STRUCTURAL GEOLOGY AND TECTONICS**—continental drift, crushed pebbles and conglomerates, diapirs, deep sea trenches, earthquakes, faulting, geosynclines, geothermal exploration, grabens, island arcs, plasticity, rheology, strike and dip, synclines, tension, etc. His studies were conducted in Alabama, Arkansas, Colorado, Florida, Georgia, Michigan, Montana, New Mexico, Oklahoma, and Wyoming, Argentina, Australia, Canada, England, Germany, Japan, Mexico, Saudi Arabia, The Netherlands, Asia, and many ocean basins.

PUBLISHED CONTRIBUTIONS

1939

- Sidwell, R. G., and Tanner, W. F., 1939, Sand grain patterns of west Texas dunes: *American Journal of Science*, 237 (3), p. 181–187.
 Tanner, W. F., 1939, Muleshoe dunes of panhandle Texas. *Pan-American Geologist*, 71 (3), 173–182.
 Tanner, W. F., 1939, Texas surface soils. *Economic Geology*, 34 (4), 459–460.

1940

- Tanner, W. F., Jr., 1940, An electrical method for the identification of sands. *American Journal of Science*, 238 (1), 6.
 Tanner, W. F., Jr., 1940, Mineralogic determination of oil drilling chippings. *Pan-American Geologist*, 73 (4), 282–288.

1950

- Tanner, W. F., 1950, Location of the syncline in island arc structure: *Science*, 111, 232.
 Tanner, W. F., and Mallams, P., 1950, Sorting of Canadian River, Oklahoma, sands: *Journal of Sedimentary Petrology*, 20, 224–227.

1953

- Tanner, W. F., 1953, Use of apparent dip in measuring thickness: *American Association of Petroleum Geologists Bulletin*, 37, 566–568.
 Tanner, W. F., 1953, Hilltop formation, Upper Pennsylvanian, Seminole County, Oklahoma. *American Association of Petroleum Geologists Bulletin*, 37, 2046–2050.
 Tanner, W. F., 1953, Estimating low dips on air photographs. *American Association of Petroleum Geologists Bulletin*, 37, 2743–2746.
 Tanner, 1953, Facies indicators in the upper Pennsylvanian of Seminole County, Oklahoma. *Journal of Sedimentary Petrology*, 23, 220–228.

1954

- Tanner, W. F., 1954, The Brush Hollow limestone in the Canon City Re-Entrant, Colorado. *Proceedings of the Oklahoma Academy of Science*, 35, 95.
 Tanner, W. F., 1954, Stratigraphic position of the Hilltop formation of Oklahoma. *Shale Shaker*, 4, 4–9.
 Tanner, W. F., 1954, Tectonic and paleogeographic inferences from low-dip unconformities. *American Association of Petroleum Geologists Bulletin*, 38, 886–899.
 Tanner, W. F., 1954, Wave-cut erosion surface in the Wichita Mountains. *Shale Shaker*, 5 (4), 5–11.
 Tanner, W. F., 1954, The Lake Altus Wave-Cut Surface in the Wichita Mountain area, Oklahoma. *Science*, 120 (3119), 571.

1955

- Tanner, W. F., 1955, Paleogeographic reconstructions from cross-bedding studies. *American Association of Petroleum Geologists Bulletin*, 39, 2471–2483.
 Tanner, W. F., 1955, Geological significance of 'stacked' meanders. *Geological Society of American Bulletin*, 66, 1698.
 Tanner, W. F., 1955, Pediments in areas of falling base-level. *Shale Shaker*, 6, 7–10.
 Tanner, W. F., 1955, North-south asymmetry of the Pleistocene ice sheet. *Science*, 122 N. 3171, p.

1956

- Tanner, W. F., 1956, Geology of Seminole County, Oklahoma. *Oklahoma Geological Survey Bulletin* 74, 175 p.
- Tanner, W. F., 1956, Geological students (Fla.) go underwater. *World Oil*, 142 (7), 126.
- Tanner, W. F., 1956, Cross-bedding vectors and isopotential lines. [Abstract], *Geological Society of America Bulletin*, 67 (2), 1759–1760.
- Tanner, W. F., 1956, Geology of Northeastern Osage County, Oklahoma. *Oklahoma Geological Survey Circular* 40, 76 p.
- Tanner, W. F., 1956, Parallel slope retreat in humid climate. *Transactions of the American Geophysical Union*, 37, 605–607.
- Tanner, W. F., 1956, Trigonometric solution from apparent dip. *Transactions of the American Geophysical Union*, 37, 231.
- Tanner, W. F., 1956, Lower limits to the So Coefficient. *Journal of Sedimentary Petrology*, 26, 158–159.
- Tanner, W. F., 1956, New Method for mapping old shorelines. *World Oil*, 142 (5), 123 ff.
- Tanner, W. R., 1956, Examples of probable lithified beach-rock. *Journal of Sedimentary Petrology*, 26, 307–312.
- Tanner, W. F., 1956, Superposed streams of the Arbuckle Mountains, Oklahoma. *Shale Shaker Digest*, 11, 77–78.

1958

- Tanner, W. F., 1958, An occurrence of flat-topped ripple marks. *Journal of Sedimentary Petrology*, 28, 95–96.
- Tanner, W. F., 1958, Comparison of phi percentile deviations. *Journal of Sedimentary Petrology*, 28, 203–205.
- Tanner, W. F., 1958, The zig-zag nature of type I and type IV curves. *Journal of Sedimentary Petrology*, 28, 372–375.
- Brenneman, L., and Tanner, W. F., 1958, Possible abandoned barrier islands in panhandle Florida: *Journal of Sedimentary Petrology*, 28, 342–344.
- Tanner, W. F., 1958, Fingerprint pattern on certain calcareous soils. *American Association of Petroleum Geologists*, 42, 438–439.
- Tanner, W. F., 1958, The equilibrium beach. *Transactions of the American Geophysical Union*, 39, 889–891.

1959

- Tanner, W. F., 1959, Examples of departure from the Gaussian in geomorphic analysis. *American Journal of Science*, 257, 458–460.
- Tanner, W. F., 1959, Geomorphology of representative areas. *Guide Book, First Regional Field Conference, Ft. Smith (Ark.) Geological Society*, 3–6.
- Tanner, W. F., 1959, The importance of modes in cross-bedding data. *Journal of Sedimentary Petrology*, 29, 221–226.
- Tanner, W. F., 1959, Permo-Pennsylvanian paleogeography of part of Oklahoma. *Journal of Sedimentary Petrology*, 29, 326–335.
- Tanner, W. F., 1959, Sample components obtained by the method of differences. *Journal of Sedimentary Petrology*, 29, 408–411.
- Tanner, W. F., 1959, Near-shore studies in sedimentology and morphology along the Florida Panhandle coast. *Journal of Sedimentary Petrology*, 29, 564–574.
- Tanner, W. F., and McCutchen, W. T., 1959, Serpentine medial moraines on model glacier. *Geological Society of America Bulletin*, 70, 1487–1488.

- Tanner, W. F., 1959, Possible Gaussian components of zig-zag curves. *Geological Society of America Bulletin*, 70, 1813–1814.

1960

- Tanner, W. F., 1960, Helicoidal flow, a possible cause of meandering. *Journal of Geophysical Research*, 65, 993–996.
- Tanner, W. F., 1960, The lognormal distribution, with special references to its uses in economics, by John Aitchison and J.A.C. Brown, [a review], *Journal of Sedimentary Petrology*, 30, 159–160.
- Tanner, W. F., 1960, An introduction to Fluvial hydraulics, by Serge Lelievsky, [a review], *Journal of Sedimentary Petrology*, 30, 160.
- Tanner, W. F., 1960, Numerical comparison of geomorphic samples. *Science*, 131, 1525–1526.
- Tanner, W. F., 1960, Relative accuracies of thickness based on true and apparent dips. *Shale Shaker*, 11 (1), 17–18.
- Tanner, W. F., 1960, Possible Gaussian components of zig-zag curves. *Quantitative Terrain Studies*, published by the U.S. Army Engineer Waterways Experiment Station, Vicksburg, MS.; Part I, No. 5.
- Tanner, W. F., 1960, editor, *Proceedings, Eleventh Annual Highway Geology Symposium*, Tallahassee, Florida.
- Tanner, W. F., 1960, Expanding shoals in areas of wave refraction. *Science*, 132, 1012–1013.
- Tanner, W. F., 1960, Filtering in geological sampling. *The American Statistician*, 14 (5), 12.
- Tanner, W. F., 1960, Shallow water ripple mark varieties. *Journal of Sedimentary Petrology*, 30, 481–485.
- Tanner, W. F., 1960, Bases for Coastal classification. *Southeastern Geology*, 2 (1).
- Tanner, W. F., 1960, Paleogeography: Coastal studies produce more questions than answers. *Shale Shaker*, 11 (3), 14–17.
- Tanner, W. F., 1960, Florida coastal classification. [Abstract], *American Association of Petroleum Geologists Bulletin*, 44 (9), 1604.
- Tanner, W. F., 1960, Florida coastal classification. *Transactions of the Gulf Coast Association of Geological Societies*, 10, 259–266.
- Tanner, W. F., 1960, 'Perched' barrier islands, east Florida coast. *Southeastern Geology*, 2 (2), 133–135.

1961

- Tanner, W. F., 1961, Offshore shoals in areas of energy deficit. *Journal of Sedimentary Petrology*, 31 (1), 87–95.
- Tanner, W. F., 1961, An alternate approach to morphogenetic climates. *Southeastern Geology*, 2 (4), 251–257.
- Tanner, W. F., 1961, Geology and the Great Flood. *Jour. Amer. Sae. AFFIL.*, 13 (4), 117–119.
- Tanner, W. F., 1961, Spiral motion of fluids. *Journal of Geophysical Research*, 66, 333.
- Tanner, W. F., 1961, Beaches and Coasts, by Cuchlaine A.M. King [a review]. *Journal of Sedimentary Petrology*, 31 (1), 133–134.
- Tanner, W. F., 1961, Spiral motion of Fluids, By Vaclav Kolar, [a review]. *Journal of Sedimentary Petrology*, 31 (1), 134–135.
- Tanner, W. F., Mullins, A., and Bates, J., 1961, Possible

- masked heavy mineral deposit, Florida panhandle. *Economic Geology*, 56 (6), 1079–1087.
- Tanner, W. F. 1961, Reversing dust devils. *American Meteorological Society Annual Meeting*, Tallahassee, FL.
- Tanner, W. F., 1961, Mainland beach changes due to hurricane Donna. *Journal of Geophysical Research*, 66 (7), 2265–2266.
- Tanner, W. F., 1961, Clay and peat boulders. *Journal of Sedimentary Petrology*, 31 (4), 634–636.
- 1962
- Tanner, W. F., 1962, Reorientation of convex shores. *American Journal of Science*, 260 (1), 37–43.
- Tanner, W. F., 1962, Surface structural patterns obtained from strike-slip models. *Journal of Geology*, 70 (1), 101–107.
- Tanner, W. F., 1962, Theoretical Geomorphology, by A.E. Scheidegger [a review], *Transactions of the American Geophysical Union*, 43 (1), 34–35.
- Tanner, W. F., 1962, Field computations in engineering and Physics, by A. Thom and C.J. Apelt, [a review], *Journal of Sedimentary Petrology*, 32 (1), 147–148.
- Tanner, W. F., 1962, Origin of oscillation ripple marks. *Geomorphology Newsletter*, 6, 18.
- Tanner, W. F., 1962, Origin of meander and braided patterns. *Geomorphology Newsletter*, 6, 18–19.
- Tanner, W. F., 1962, Deformation of water particle orbits. *Geomorphology Newsletter*, 6, 19.
- Tanner, W. F., 1962, Coastal form as the end product of many different factors. *Geomorphology Newsletter*, 6, 19–20.
- Tanner, W. F., 1962, Geologic interpretation of grain-size distribution measurements of Colorado Plateau sedimentary rocks: a discussion. *Journal of Geology*, 70 (3), 375–376.
- Tanner, W. F., 1962, Components of the hypsometric curve of the earth. *Journal of Geophysical Research*, 67 (7), 2841–2844.
- Tanner, W. F., 1962, The use of equilibrium concepts in the search for heavy minerals. Preprint for AIME-SME Conv., Gatlinburg, Tenn., Sept. 9–12; *Transactions of the Society of Mining Engineers*, December, p. 395–399.
- Tanner, W. F., 1962, Inexpensive models for studying helical flow in streams. *Journal of Geological Education*, 10 (4), 116–118.
- Tanner, W. F., 1962, Falling water level ripple marks. *Transactions of the Gulf Coast Association of Geological Societies*, 12, 295–301.
- Tanner, W. F., 1962, Geomorphology and the sediment transport system. *Southeastern Geology*, 4 (2), 113–126.
- Tanner, W. F., 1962, Upper Cretaceous coast of Georgia and Alabama. *Georgia Mineral Newsletter*, 15 (3), 89–92.
- Tanner, W. F., 1962, Theoretical Geomorphology by A.E. Scheidegger; [a review], *Journal of Sedimentary Petrology*, 32 (3), 615–616.
- Tanner, W. F., 1962, Fluid. Sed. Pet Mechanics by R. H. F. Pao, [a review]. *Journal of Sedimentary Petrology*, 32 (3), 616–617.
- 1963
- Tanner, W. F., 1963, Pacific off-center rotation, and equatorial Fault systems. [Abstract], *Geological Society of America Special Paper* 73, p. 253.
- Tanner, W. F., 1963, Spiral Flow in rivers, shallow seas, dust devils, and models. *Science*, 39, 41–42.
- Tanner, W. F., 1963, Pennsylvanian sandstone trends in eastern Oklahoma. *Shale Shaker*, 13 (6), 19.
- Tanner, W. F., 1963, Detachment of Gaussian components from zig-zag curves. *Journal of Applied Meteorology*, 2 (1), 119–121.
- Tanner, W. F., 1963, The Scaled-UP model in studies of sediment transport Program. AAPG-SEPM-SEG convention, Houston, Tex., Mar. 22–25, p. 55; *American Association of Petroleum Geologists Bulletin*, 47, 372.
- Tanner, W. F., 1963, Permian shoreline of central New Mexico. *American Association of Petroleum Geologists Bulletin*, 47 (8), 1604–1610.
- Tanner, W. F., 1963, Crushed pebble conglomerate of southwestern Montana. *Journal of Geology*, 71 (5), 637–640.
- Tanner, W. F., 1963, News Note (on 2nd Sed. Conf.). *Journal of Sedimentary Petrology*, 33 (2), 485–486.
- Tanner, W. F., Evan, R. G., and Holmes, C. W., 1963, Low-energy coast near Cape Romano, Florida. *Journal of Sedimentary Petrology*, 33 (3), 713–722.
- Tanner, W. F., 1963, Tectonic patterns in the Appalachian-Ouachita-Oklahoma mountain complex. *Shale Shaker*, 14 (3), 2–6.
- Tanner, W. F., 1963, Origin and maintenance of ripple marks. *Sedimentology*, 2 (4), 307–311.
- Tanner, W. F., 1963, The equatorial “maximum deformation” belt. *Geologische Rundschau*, 53 (2), 779–788.
- 1964
- Tanner, W. F., 1964, Earthquakes and Faults by F. F. Evison, [a discussion]. *Bulletin of the Seismological Society of America*, 54 (1), 451–452.
- Tanner, W. F., 1964, Filled submarine spring vents in Cretaceous rocks of Alabama. *Southeastern Geology*, 5 (2), 113–117.
- Tanner, W. F., 1964, Modification of sediment size distributions. *Journal of Sedimentary Petrology*, 34 (1), 156–164.
- Tanner, W. F., 1964, The “student model” approach to geology in the secondary schools. *Journal of Geology Education*, 12 (2), 49–53.
- Tanner, W. F., 1964, History of the Appalachian geosyncline area. [Abstract], *Geological Society of America Special Paper* 76, p. 259–260.
- Tanner, W. F., 1964, Eolian ripple marks in sandstone. *Journal of Sedimentary Petrology*, 34 (2), 432–433.
- Tanner, W. F., 1964, Particle size: measurement, interpretation and application by R. R. Irani and C. F. Callis, [review]. *Journal of Sedimentary Petrology*, 34 (2), 444–445.
- Tanner, W. F., 1964, Crushed pebble conglomerate: a reply. *Journal of Geology*, 2 (4), 489–492.
- Tanner, W. F., 1964, Today’s Eratosthenes. *Journal of Geological Education*, 12 (3), 114.
- Tanner, W. F., 1964, Paleocurrents and basin analysis by P.E. Potter and F.J. PettiJohn. [a review]. *Journal of Sedimentary Petrology*, 34 (3), 701.
- Tanner, W. F., 1964, Nearly ideal drift system along the Florida Panhandle coast. *Zeitschrift Fur Geomorphologie*, 8 (3), 334–342.

- Tanner, W. F., Gremillion, L. F.; and Huddleston, P., 1964, Barrier-andlagoon sets on high terraces in the Florida Panhandle. *Southeastern Geology*, 6, 31–36.
- Tanner, W. F., 1964, Unified basis for tectonic theory. *Tectonophysics*, 1, 135–158.
- 1965
- Tanner, W. F., 1965, Cretaceous shoreline across the South. *Shale Shaker*, 15, 118–125.
- Tanner, W. F., 1965, The surf-break: key to paleogeography? *American Association of Petroleum Geologists Bulletin*, 49, 360.
- Tanner, W. F., 1965, High-index ripple marks in the swash zone. *Journal of Sedimentary Petrology*, 35, 968.
- Tanner, W. F., 1965, Cause and development of an ice age. *Journal of Geology*, 73 (3), 413–430.
- Tanner, W. F., 1965, Spiral motion, sediment transport, and river development. Proc., Federal Inter-Agency Sedimentation Conf., 1963. USDA Agric. Research Service, Misc. Publ. 970, p. 330–335.
- Tanner, W. F., 1965, The origin of the Gulf of Mexico. *Transactions of the Gulf Coast Association of Geological Societies*, 15, 41–44.
- Tanner, W. F., 1965, History of the Apalachicola River delta area, Florida. *Transactions of the Gulf Coast Association of Geological Societies*, 15, 229.
- Tanner, W. F., 1965, Upper Jurassic paleogeography of the Four Corners Region. *Journal Sediment Petrology*, 35, 564–575.
- Tanner, W. F., 1965, Marine terraces: pre-Pleistocene? *Southeastern Geology*, 6 (4), 219–222.
- Tanner, W. F., 1965, Chronology of the Ice Ages. *Jour. Amer. Sci. Affiliation*, 17 (4), 112–118.
- Tanner, W. F., and Bates, J., 1965, Submerged beach on a zero-energy Coast. *Southeastern Geology*, 7 (1), 19–24.
- Tanner, W. F., 1965, Recent faulting in south Florida. *Geological Society of America, Southeastern Section, Notes With Abstracts*, 36.
- 1966
- Tanner, W. F., 1966, Development of the Gulf of Mexico. *New Orleans Geol. Soc. Log.*, 6 (6), 1.
- Tanner, W. F., 1966, Numerous eolian ripple marks from Entrada Formation. *The Mountain Geologist*, 3 (3), 133–134.
- Tanner, W. F., 1966, Late Cenozoic history and coastal morphology of the Apalachicola River region, Western Florida. In: Shirely, M. L., (ed.), *Deltas, in their Geologic Framework*. Houston, TX, Houston Geological Society, 83–98.
- Tanner, W. F., 1966, The surf “break”: key to paleogeography? *Sedimentology*, 7, 203–210.
- Tanner, W. F., 1966, Recent Faulting in South Florida. [Abstract], *Geological Society of America Special Paper* 87, 264.
- 1967
- Tanner, W. F., 1967, The “scrambled book” in Freshman Geology. *Journal of Geological Education*, 15 (2), 69–73.
- Tanner, W. F., 1967, Multiple influences on sea-level changes in the Tertiary. [abstract], *Coastal Research Notes*, 2 (4), 10–11.
- Tanner, W. F., 1967, Calculation of coastal energy and drift rate. *Proceedings, Twelfth Congress, International Association for Hydraulic Research*, 4, 313–317.
- Tanner, W. F., 1967, The ripple mark analog: preliminary results. *Southeastern Geology*, 8 (2), 67–72.
- Tanner, W. F., 1967, Tertiary Sea levels. *Geotimes*, 12 (8), 23–24.
- Tanner, W. F., 1967, In: *The Encyclopedia of Atmospheric Sciences and Astrogeology*. New York: Reinhold Publishing Corp.
1. Boundary layer, p. 125–126.
 2. Climate and geomorphology, p. 167–168.
 3. Models, p. 609–613.
 4. Reynolds, Froude, and other dimensionless numbers, p. 836–839.
 5. Vortex trail, p. 1106–1107.
- Tanner, W. F., 1967, River Hydraulics, by John F. Kennedy, [Discussion]. *Proceedings of the Twelfth Congress, International Association of Hydraulic Research*, 5, 150–151.
- Tanner, W. F., 1967, Ripple mark indices and their uses. *Sedimentology*, 9, 89–104.
- Tanner, W. F., 1967, Finger bars on an ideal low-wave, low-tide beach, Santa Catarina Island, Brazil. *Geological Society of America Special Paper* 115, 219.
- 1968
- Tanner, W. F., and Williams, G. K., 1968, Model diapirs, plasticity and tension. In: Braunstein, J., and O'Brien, G. D., (eds.), *Diapirism and Diapirs, a Symposium*, American Association of Petroleum Geologists, Memoir 8, 10–15.
- Tanner, W. F., 1968, Environmental indicators in Morrison formation, New Mexico. [Abstract], *American Association of Petroleum Geologists Bulletin*, 52 (3), 552.
- Tanner, W. F., 1968, Deltas: disequilibrium deposits. [Abstract], *Southeastern Section, Geological Society of America*, Durham, N.C.
- Tanner, W. F., 1968, Reversal of Appalachian strike-slip motion. [Abstract], *Southeastern Section, Geological Society of America*, Durham, N.C.
- Kirtley, D. W., and Tanner, W. F., 1968, Sabellariid worms: builder of a major reef type. *Journal of Sedimentary Petrology*, 38 (1), 73–78.
- Tanner, W. F., 1968, Breaker development and littoral drift. *The Geomorphologist*, 12, 6.
- Tanner, W. F., 1968, Inferences concerning the geological histories of the planets. *Transactions of the Institute of Mining and Metallurgy*, Ostrava, Czech., 1, 5968.
- Tanner, W. F., 1968, Tertiary sea-level symposium: introduction. *Paleogeography*, 5, 7–14.
- Tanner, W. F., 1968, Multiple influences on sea-level changes in the Tertiary. *Paleogeography*, 5, 165–172.
- Tanner, W. F., 1968, Cause and development of an ice age. In: Mitchell, J. M., Jr., (ed.), *Causes of Climatic Change Meteorological Monographs*, 8 (30), 126–127.
- Tanner, W. F., 1968, Origin of the Gulf of Mexico, II: More Data. *Transactions of the Gulf Coast Association of Geological Societies*, 18, 98–107.
- Tanner, W. F., 1968, Sense of curvature on equilibrium beaches. [Abstract], *Geological Society of America Special Paper* 101, 377.
- Kirtley, D. W., and Tanner, W. F., 1968, Fossil Sabellariid reefs from a Pleistocene marine terrace deposit in Chile.

- [Abstract], *Geological Society of America Special Paper* 115, 120.
- Tanner, W. F., 1968, Finger bars on an ideal low-wave, low-tide beach, Santa Catarina Island, Brazil. [Abstract], *Geological Society of America Special Paper* 115, 219.
- Tanner, W. F., 1968, High-Froude phenomena in sedimentology. [Abstract], *Geological Society of America Special Paper* 115, 220.
- Tanner, W. F., 1968, Multiple influences on sea-level changes in the Tertiary. [Abstract], *Geological Society of America Special Paper* 115, p. 501.
- Tanner, W. F., 1968, Tensional basins on the eastern edge of Asia. *Journal of the Geological Society of Japan*, 74 (11), 583–588.
- Tanner, W. F., 1968, Shallow Lake deposits, lower part of Morrison Formation (late Jurassic), northern New Mexico. *The Mountain Geologist*, 5 (4), 187–195.
- Tanner, W. F., 1968, El origen del Golfo de Mexico. *Revista Ingenieria Petrooera. Asoc. Ing. Petrolero s Mexico Bol.*, 8 (6), 28–32.
- Tanner, W. F., 1968, Bibliography of coastal research papers in the U.S., 1963–1966. In: Guilcher, A., and Marec, A., (eds.), *Bibliography, 1963–66*, Paris: Commission on Coastal Geomorphology and Centre National de la Recherche Scientifique, 66–68.
- Tanner, W. F., 1968, Rivers: meandering and braiding. In: Fairbridge, R. W., (ed.), *Encyclopedia of Geomorphology*, Reinhold, 957–963.
- Tanner, W. F., 1968, Geomorphology: statistical analysis. In: Fairbridge, R. W., (ed.), *Encyclopedia of Geomorphology*, Reinhold; 422–424.
- Tanner, W. F., 1968, Equilibrium in geomorphology. In: Fairbridge, R. W., (ed.), *Encyclopedia of Geomorphology*, Reinhold; 315–316.
- 1969
- Tanner, W. F., 1969, Initiation of sand transport. [Abstract], *Geological Society of America*, part 4, 79–80.
- Tanner, W. F., 1969, Location of the shear velocity. [Abstract], *Geological Society of America*, part 4, 80.
- Tanner, W. F., 1969, Ripple mark spacing v.s. Fetch. [Abstract], *Geological Society of America*, part 4, 81.
- Tanner, W. F., 1969, Mobile Bay Estuarine system. In: Feray, D. E., (ed.), *Case Studies of estuarine Sedimentation*, GURC Contract No.14–12–445 with FWPCA, C-1–C-66.
- Tanner, W. F., 1969, Surge flow: a model of the wall layer. *Southeastern Geology*, 10, 93–110.
- Tanner, W. F., 1969, The particle size scale. *Journal of Sedimentary Petrology*, 39, 809–811.
- 1970
- Osmond, J. K., May, J. P., and Tanner, W. F., 1970, Age of the Cape Kennedy barrier-and-lagoon complex. *Journal of Geophysical Research*, 75, 469–479.
- Tanner, W. F., 1970, Pacific Basin Motion. *Pacific Geology*, 2, 1–10.
- Niederoda, A. W., and Tanner, W. F., 1970, Preliminary study of transverse bars. *Marine Geology*, 9, 41–62.
- Tanner, W. F., 1970, Performance on open-book tests. *Journal of Geological Education*, 8 (4), 166–168.
- Tanner, W. F., 1970, Significance of Camille (1969). *Southeastern Geology*, 12, 95103.
- Tanner, W. F., 1970, Triassic-Jurassic lakes in New Mexico. *Mountain Geologist*, 7, 281–289.
- 1971
- Tanner, W. F., 1971, Poleward drift of North America. *Geologische Rundschau*, 60 (3), 848–867.
- Tanner, W. F., 1971, Measuring coastal wave energy. *Transactions of the American Geophysical Union*, 52, 412–413.
- Tanner, W. F., 1971, The river profile. *Journal of Geology*, 79, 482–492.
- Tanner, W. F., 1971, Net kinetic energy in littoral transport. *Science*, 172, 1231–1232.
- Tanner, W. F., 1971, Particles and flow. Review of Hydraulics of sediment transport, by W.H. Graf. *Science*, 172, 1228.
- Tanner, W. F., 1971, Numerical estimates of ancient waves, water depth and fetch. *Sedimentology*, 16, 71–88.
- Tanner, W. F., and Stapor, F. W., Jr., 1971, Tabasco beach-ridge plain: an eroding coast. *Transactions of the Gulf Coast Association of Geological Societies*, 21, 231–232.
- Tanner, W. F., 1971, Theoretical approach to the geological history of the southern United States. *Transactions of the Gulf Coast Association of Geological Societies*, 21, 107–113.
- Tanner, W. F., 1971, Growth rates of Venezuelan beach ridges. *Sedimentary Geology*, 6, 215–220.
- Tanner, W. F., 1971, Our moving beaches. *Americas*, 23 (10), 2–8.
- Tanner, W. F., 1971, Sediment-vector sequences and tectonism. *Mountain Geologist*, 8, 151–153.
- 1972
- Tanner, W. F., 1972, Theoretical geomorphology. In: Scheidegger, A. E., (ed.), *Paleogeography, Paleoclimatology, Paleogeology*, 11, p. 67–69.
- Tanner, W. F., 1972, Desert Sedimentary Environments—Developments in Sedimentology, by K. W. Giennie, [Review], *Sedimentary Geology*, 8, 87–88.
- Tanner, W. F., 1972, Kinetic energy; saltation. *Science*, 175, 472.
- Tanner, W. F., 1972, Large gypsum mounds in the TodiIto Formation, New Mexico. *Mountain Geologist*, 9 (1), 55–58.
- Tanner, W. F., and Stapor, F. W., Jr., 1972, Precise control of wave runup in beach ridge construction. *Zeitschrift für Geomorphologie*, 16 (4), 393–399.
- Tanner, W. F., and Stapor, F. W., Jr., 1972, Accelerating crisis in beach erosion. *International Geography*, 2, 1020–1021.
- Tanner, W. F., 1972, Bibliography of Coastal Research Papers in the U.S. In: Zenleovich, V. P., Gudelis, V., and Orlova, G. A., (eds.), *Bibliography 1967–1970, Commission on Coastal Geomorphology, National Committee of Soviet Geographers*. Vilnius, 63–69.
- Tanner, W. F., 1972, High Marginal mountains: Evidence for tension. *Pacific Geology*, 5, 1–5.
- Tanner, W. F., 1972, Equatorial acceleration and continental paths. *Transactions of the Gulf Coast Association of Geological Societies*, 22, 117–121.
- Tanner, W. F., 1972, Equatorial acceleration and continental paths. [Abstract], *American Association of Petroleum Geologists Bulletin*, 56, 1902–1903.

- Tanner, W. F., 1972, Negative evidence and Pleistocene history. *Transactions of the Gulf Coast Association of Geological Societies*, 22, 253–255.
- Tanner, W. F., 1972 Negative evidence and Pleistocene history. [Abstract], *American Association of Petroleum Geologists Bulletin*, 56, 1903.
- 1973
- May, J. P., and Tanner, W. F., 1973, The littoral power gradient and shoreline changes. In: Coates, D. R., (ed.), *Coastal Geomorphology*, Binghamton, N.Y.: State University of New York, 43–60.
- Tanner, W. F., 1973, Origin and history of the Gulf of Mexico. In Christy, A. M., (ed.), *Structure of the Gulf Basin (Gulf of Mexico)*, New Orleans: New Orleans Geological Society, 19–42.
- Tanner, W. F., and Hockett, J. C., 1973, Beach ridge slope angles vs age. *Southeastern Geology*, 15, 45–51.
- Tanner, W. F., 1973, The segmented lagoon and “a-b-c...” analysis. *Abstracts, IX Congress, Intern. U. for Quat. Research*, Christchurch, 361.
- Tanner, W. F., 1973, Comment (on Shea, James H., proposal for a particle-size grade scale based on 10; same issue, 3–8). *Geology*, 1 (1), 8.
- Stapor, F. W., Jr., and Tanner, W. F., 1973, Major uncertainties in C-14 ages. *Abstracts, IX Congress, Internat. Union for Quat. Research*, Christchurch, 341.
- Tanner, W. F., 1973, Discussion. (on: Gorycki, M. A., Hydraulic drag, a meander-initiating mechanism). *Geological Society of America Bulletin*, 84 (9), 3117–3118.
- Tanner, W. F., 1973, Advances in near-shore physical sedimentology: a selective review. *Shore and Beach*, 41 (1), 22–27.
- Tanner, W. F., 1973, Deep-sea trenches and the compression assumption. *American Association of Petroleum Geologists Bulletin*, 57, 2195–2206.
- Tanner, W. F., 1973, West Louisiana chimer plain history. *Transactions of the Gulf Coast Association of Geological Societies*, 23, 390–393.
- Stapor, F. W., Jr., and Tanner, W. F., 1973, Errors in the preholocene C-14 scale. *Transactions of the Gulf Coast Association of Geological Societies*, 23, 351–354.
- Stapor, F. W., Jr., and Tanner, W. F., 1973, Textoral study of beaches, beach ridges and coastal dunes. *Geological Society of America Abstracts with programs*, 5 (7), 818–819.
- Tanner, W. F., 1973, Canons of tectonism. *Geologische Rundschau*, 62 (3), 969–988.
- 1974
- Tanner, W. F., 1974, The Incomplete Floodplain. *Geology*, 2 (2), 105–106.
- Tanner, W. F., 1974, The coastal Sediment transport system. In: Smith, R. E., (ed.), *Proceedings of a Conference on Marine Environmental Implications of Offshore Drilling in Eastern Gulf of Mexico (1974)*, St. Petersburg, FL: State Univ. System of Florida, Institute of Oceanography, 309–313.
- Tanner, W. F., 1974, Sediment transport in the near-shore zone. [Abstract], *Florida Scientist*, 37, Supplement No. 1, 14.
- Tanner, W. F., 1974, Theoretical distribution patterns of Gulf Coast oil. *AAPG-SEPM Annual Meeting Abstracts*, 1, 89.
- Berquist, C. R., and Tanner, W. F., 1974, Effect of rise in sea level on littoral transport potential. *Geological Society of America Abstracts with Programs*, 6 (4), 335.
- Emmerling, M. D., and Tanner, W. F., 1974, Splitting error in replicating sand size analyses. *Geological Society of America Abstracts with Programs*, 6 (4), 352.
- Tanner, W. F., 1974, The Iceland anomaly: a glacio-isostatic feature? *Geological Society of America Abstracts with programs*, 6 (4), 406–407.
- Tanner, W. F., 1974, Bed-load transportation in a chain of river segments. *Shale Shaker*, 24 (7), 128–134.
- Tanner, W. F., 1974, The Incomplete Floodplain: Reply. *Geology*, 2 (6), 281.
- Tanner, W. F., 1974, The “a-b-c...” model. In: Tanener, W. F., (ed.), *Sediment Transport in the Nearshore Zone*, Tallahassee, FL: Geology Department, Florida State University, 12–21.
- Tanner, W. F., 1974, Applications of the model. In: Tanner, W. F., (ed.), *Sediment Transport in the Near-shore Zone*, Tallahassee, FL: Geology Department, Florida State University, 104–141.
- Tanner, W. F., 1974, Beach Processes, Berrien County, Mich. *International Association for Great Lakes Research, Seventeenth Conference Abstracts Volume*, 222–223.
- Tanner, W. F., 1974, The Mexican “island” arc. *Transactions of the Gulf Coast Association of Geological Societies*, 24, 81–88.
- Berquist, C. R., Tanner, W. F., 1974, Analysis of water-level rise effects. *Transactions of the Gulf Coast Association of Geological Societies*, 24, 255–256.
- Emmerling, M. D., and Tanner, W. F., 1974, Sand leakage around a rocky headland at Niteroi. *Transactions of the Gulf Coast Association of Geological Societies*, 24, 303–307.
- Tanner, W. F., 1974, History of Mesozoic Lakes of Northern New Mexico. In: Siemers, C. T., (ed.), *Silver Anniversary Guidebook, Ghost Ranch, Central-Northern New Mexico*, New Mexico Geological Society, 219–224.
- Tanner, W. F., 1974, Deep-sea trenches and the compression assumption: reply. *American Association of Petroleum Geologists Bulletin*, 58 (12), 2525–2527.
- 1975
- Wayne, C., Berquist, C. R., May, J. P., Murali, R., S., and Tanner, W. F., 1975, [Abstract] Computer exploitation of the “a-b-c...” model in coastal sand transport studies. *EOS—Transactions of the American Geophysical Union*, 56 (2), 80.
- May, J. P., and Tanner, W. F., 1975, Estimates of net wave work along coasts. *Zestschrift fur Geomorphologie*, 22, 1–7.
- Tanner, W. F., 1975, The log-log transverse shore profile. *Southeastern Section, Geological Society of America Abstracts with Programs*, 7 (4), 542.
- Enstminger, L., Banks, R. S., and Tanner, W. F., 1975, The coefficient “k” in the “a-b-c...” model. *Southeastern Section, Geological Society of America Abstracts with Programs*, 7 (4), 486.
- Enstminger, L., and Tanner, W. F., 1975, Directions of sand transport, Anna Maria Key to Casey Key, Fla. *Southeastern Section, Geological Society of America Abstracts with Programs*, 7 (4), 487.

- Tanner, W. F., 1975, Sediment transport in the near-shore zone. *Coastal Research Notes*, 4 (4), 1–2.
- Tanner, W. F., 1975, lo/U ages of corals from Saurashtra coast: a discussion. *Marine Geology*, 19, 275–276.
- Tanner, W. F., 1975, Beach processes, Berrien County, Mich. *Journal of Great Lakes Research*, 1 (1), 171–178.
- Stapor, F. W., and Tanner, W. F., 1975, Hydrodynamic implications of beach, beach ridge and dune grain size studies. *Journal of Sedimentary Petrology*, 45, 926–931.
- 1976
- Tanner, W. F., 1976 Tectonically significant pebble types: sheared, pocked and second-cycle examples. *Sedimentary Geology*, 16, 69–83.
- Balsillie, J. H., Campbell, K., Coleman, C., Entsminger, L., Glassen, R., Hajishafie, N., Huang, D., Tunsoy, A. F., and Tanner, W. F., 1976, Wave parameter gradients along the wave ray. *Marine Geology*, 22, M17-M21.
- 1977
- Stapor, F. W., Jr., and W. F. Tanner, W. F., 1977, Late Holocene mean sea level data from St. Vincent Island and the shape of the late Holocene mean sea level curve. In: Tanner, W. F., (ed.), *Coastal Sedimentology*, Tallahassee, FL: Geology Department, Florida State University, 35–68.
- Tanner, W. F., 1977, Workshop on precision in measuring shoreline change. In: Tanner, W. F., *Coastal Sedimentology*, 1–2.
- Tanner, W. F., 1977, Discontinuities in the “a-b-c. . .” model. In: Tanner, W. F., (ed.), *Coastal Sedimentology*, 69–80.
- Tanner, W. F., 1977, Statistics of the “zero-component” mixture. In: Tanner, W. F., (ed.), *Coastal Sedimentology*, 173–184.
- Campbell, K., Coleman, C., Entsminger, L., and Tanner, W. F., 1977, Langmuir circulation as a factor in the formation of depositional beach cusps. In: Tanner, W. F., (ed.), *Coastal Sedimentology*, 245–262.
- Tanner, W. F., 1977, Froude regimes in the swash zone. In: Tanner, W. F., (ed.), *Coastal Sedimentology*, 289–298.
- 1978
- Emmerling, M., and Tanner, W. F., 1978, A movimentacao de areias, em promontorio rocoso, na area de Niteroi. *Noticia Geomorphologica*, 18 (36), 119–129.
- Tanner, W. F., 1978, Measuring coastal change. In: Tanner, W. F., (ed.), *Standards for measuring shorelines changes*, Tallahassee, FL: Florida State University, 7–26.
- Tanner, W. F., 1978, Cross-bedding. In: Fairbridge, R. W., and Bourgeois, J., (eds.), *Encyclopedia of Sedimentology*, Dowden, Hutchinson and Ross; 209–212.
- Tanner, W. F., 1978, Grain-size studies. In: Fairbridge, R. W., and Bourgeois, J., (eds.), *Encyclopedia of Sedimentology*, Dowden, Hutchinson and Ross; 376–382.
- Tanner, W. F., 1978, Reynolds and Froude Numbers. In: Fairbridge, R. W., and Bourgeois, J., (eds.), *Encyclopedia of Sedimentology*, Dowden, Hutchinson and Ross, 620–622.
- Tanner, W. F., 1978, Sediment transport. In: Fairbridge, R. W., and Bourgeois, J., (eds.), *Encyclopedia of Sedimentology*, Dowden, Hutchinson and Ross; 731–734.
- Tanner, W. F., and Hajishafie, M., 1978, High-level Plio-Pleistocene shoreline in south Florida. *Transactions of the Gulf Coast Association of Geological Societies*, 28, 647–650.
- Tanner, W. F., 1978, Future oil: What is the outlook? *World Oil*, 187 (6), 123–140.
- 1979
- Tanner, W. F., and Collins, J., 1979, The socio-economic dimensions of beach erosion. *Proceedings of the 4th Annual Conference of the Coastal Society*, p. 188–195.
- Tanner, W. F., 1979, K-type coefficients in the littoral drift system. *Marine Geology*, 33, M15-M19.
- Tanner, W. F., 1979, Geology. In: Roller, D. C., and Twyman, R. W., (eds.), *Encyclopedia of Southern History*, Baton Rouge, LA.: Louisiana State University Press, 526–517.
- Tanner, W. F., 1979, Quaternary Period in Saudi Arabia. [Book review], *Journal of Sedimentary Petrology*, 49, 1366–1367.
- Tanner, W. F., 1979, Quaternary in Saudi Arabia. [Book review], *Earth-Science Reviews*, 5, 298–299.
- 1980
- Tanner, W.F., 1980, Non-dune eolian sand in Indian mounds. *Sedimentary Geology*, 25, 223–230.
- Tanner, W.F., 1980, Sedimentological study of the Blind Pass area, Sanibel Island, Fla. *Coastal Research*, 5 (7), 17–23.
- Tanner, W.F., 1980, The micro-velocity meter. *Geological Society of America Abstracts with Programs*, 12 (4), 210.
- Tanner, W.F., 1980, Band-width and the sorting process. *Geological Society of America Abstracts with Programs*, 12 (2), 86.
- Tanner, W.F., 1980, The opening of the Gulf of Mexico and correlative effects of poleward migration of North America. In: Pilger, R. H., (ed.), *The Origin of the Gulf of Mexico—a Symposium*, Baton Rouge, LA, 102–103.
- Socci, A., and Tanner, W. F., 1980, Little-known but important papers on grain-size analysis. *Sedimentology*, 27, 231–232.
- Tanner, W.F., 1980, “Instant” reorientation of the shoreline. In: Tanner, W. F., (ed.), *Shorelines Past and Present, Proceedings of the 5th Symposium on Coastal Sedimentology*, Tallahassee, FL: Department of Geology, Florida State University, 89–104.
- Tanner, W.F., 1980, Variants of the “a-b-c. . .” model. In: Tanner, W. F., (ed.), *Shorelines Past and Present, Proceedings of the 5th Symposium on Coastal Sedimentology*, Tallahassee, FL: Department of Geology, Florida State University, 539–556.
- Tanner, W.F., 1980, Grain-size paradox along a gravel beach. In: Tanner, W. F., (ed.), *Shorelines Past and Present, Proceedings of the 5th Symposium on Coastal Sedimentology*, Tallahassee, FL: Department of Geology, Florida State University, 557–566.
- Tanner, W. F., and Socci, T., 1980, The coastal Langmuir cell prosect: Preliminary report. In: Tanner, W. F., (ed.), *Shorelines Past and Present, Proceedings of the 5th Symposium on Coastal Sedimentology*, Tallahassee, FL: Department of Geology, Florida State University, 167–182.
- Tanner, W.F., 1980, Silerete in Australia, [Book review], *Paleogeography, Paleoclimatology, Paleocology*, 31, 88–89.
- Tanner, W.F., 1980, The origin of beach ridges. *Geological Society of America Abstracts with Programs*, 12 (7), 533.
- 1981
- Tanner, W.F., 1981, Late Mississippian paleogeography of

- the Black Warrior Basin. *Geological Society of America Abstracts with Programs*, 13 (1), 36.
- Tanner, W.F., 1981, Numerical and theoretical tools for evaluating coastal sand transport. *Abstracts, 24th Conference on Great Lakes Research (IAGLR)*, 7.
- Tanner, W.F., 1981, Time and the rock record. *Journal, American Scientific Affiliation*, 33 (2), 100–105.
- Bond, P., Tanner, W. F., and Smith, L., 1981, Structural Patterns in South Florida. *Transactions of the Gulf Coast Association of Geological Societies*, 31, 239–242.
- Tanner, W. F., 1981, Natural environments. In: Fernald, E. A., (ed.), *Atlas of Florida*, Tallahassee, FL: Florida Resources Environmental Analysis Center, Florida State University, 14–73.
- 1982
- Tanner, W. F., 1982, Sedimentological tools for identifying depositional environments. In: Arden, D. D., Beck, B. F., and Morrow, E., (eds.), *Geology of the Southeastern Coastal Plain*, Atlanta: Georgia Geological Survey Information Circular 53, 114–117.
- Tanner, W. F., 1982, Erosion debated. *Geotimes*, 27 (4), 16–17.
- Tanner, W. F., 1982, The sorting process: inferences from granulometry. *Abstracts, IAS Eleventh International Congress on Sedimentology*, Hamilton, Ontario, Canada, 82
- Tanner, W. F., and Lowry, P., 1982, Work calculations within littoral “a-b-c . . .” cells. *Abstracts, IAS Eleventh International Congress on Sedimentology*, Hamilton: Ontario, Canada; 187–188.
- Tanner, W. F., 1982, High marine terraces of Mio-Pliocene age, Florida Panhandle. In: Scott, T. M., and Upchurch, S. G., (eds.), *Miocene of the Southeastern United States*, Tallahassee, FL: Florida Geological Survey, Special Publication No. 25, 200–209.
- Tanner, W. F., 1982, Entries In: Schwartz, M. L., (ed.), *Encyclopedia of Beaches and Coastal Environments*, Stroudsbury, Penn.: Hutchinson Ross, 940 p.
1. “a-b-c . . .” model, p. 1.
 2. Beach in plan view, p. 150–153.
 3. Equilibrium shoreline, p. 391–392.
 4. Flotsam and jetsam, p. 430–431.
 5. Foam mark, p. 431.
 6. Hurricane effects, p. 467.
 7. Low-tide deltas, p. 524.
 8. Ripple marks, p. 695–698.
 9. Rooster tail, p. p. 702–703.
 10. Spring pits, p. 793.
 11. Submergence and submerged shoreline, p. 800.
 12. Wave work, p. 872–876.
- Tanner, W. F., 1982, Facies interpretation in the stratigraphic record, [Book review], *Sedimentary Geology*, 32, 75–77.
- 1983
- Tanner, W. F., 1983, Human and not-so-human footprint images on the rocks. *Geological Society of America Abstracts with Programs*, 15 (2), 50.
- Tanner, W. F., 1983, Hydrodynamic origin of the Gaussian size distribution. *Geological Society of America Abstracts with Programs*, 15 (2), 93.
- Tanner, W. F., 1983, Absolute motion of North America, and the development of the middle America area. In: Carey, S. W., (ed.), *The Expanding Earth, a Symposium (1981)*, University of Tasmania, 219–223.
- Tanner, W. F., 1983, Diapirism, grabens and horizontal tension. In: Carey, S. W., (ed.), *The expanding earth, a symposium (1981)*, University of Tasmania, 227–232.
- Tanner, W. F., 1983, Apalachicola Bay: Geology and sedimentology. In: Andree, S., (ed.), *Apalachicola Oyster Industry Conference Proceedings*, Gainesville, FL: Florida Sea Grant College Report No. 57, 8–9.
- Pontigo, F. A., Parker, W. C., and Tanner, W. F., 1983, Statistical determination of mean strike and dip: an example from the basal Tuscaloosa, eastern Alabama. *Transactions of the Gulf Coast Association of Geological Societies*, 33, 383–388.
- Tanner, W. F., 1983, The Geomorphology of the Great Barrier Reef, [book review], *Marine Geology*, 54, 320–322.
- Tanner, W.F., 1983, A jug of oil, a glob of mud, and thou . . . *Interstate Oil Compact Commission, Committee Bulletin*, 25 (2), 42–47.
- Lowry, P., and Tanner, W. F., 1983. Effects of rising water level on nearshore and breaking wave energetics. In: Tanner, W. F., (ed.), *Near-Shore Sedimentology, Proceedings of the 6th Symposium on Coastal Sedimentology*, Tallahassee, FL: Department of Geology, Florida State University, 1–11.
- Tanner, W. F., 1983. Hydrodynamic origin of the Gaussian size distribution. In: Tanner, W. F., (ed.), *Near-Shore Sedimentology, Proceedings of the 6th Symposium on Coastal Sedimentology*, Tallahassee, FL: Department of Geology, Florida State University, 12–34.
- Neale, J., Silberman, L., and Tanner, W. F., 1983, Dynamic Sedimentology of the barrier island system in southwestern Florida. In: Tanner, W. F., (ed.), *Near-Shore Sedimentology, Proceedings of the 6th Symposium on Coastal Sedimentology*, Tallahassee, FL: Department of Geology, Florida State University, 91–109.
- 1984
- Tanner, W. F., 1984. United States of America: Florida. In: Walker, H. J., (ed.), *Artificial Structures and Shorelines*, Baton Rouge, LA: Geography Department, Louisiana State University, 47–56.
- Tanner, W. F., 1984, Human and not-so-human foot-print images on the rocks. In: Gastaldo, R., and Tanner, W. F., (eds.), *The Evolution-Creation Controversy*, Paleontological Society Special Publication No. 1, 117–133.
- Tanner, W. F., 1984, Warped terraces in Florida. *Coastal Research*, 6 (9), 4–5.
- Tanner, W. F., 1984, Florida. In: Bird, E., and Schwartz, M. L., (eds.), *The World's Coastline*, New York: van Nostrand Reinhold, 163–167.
- 1985
- Tanner, W. F., 1985, Framework for design of a Pleistocene calendar. *TER-QUA Symposium Series*, 1, 71–74.
- Tanner, W. F., 1985, Late Cenozoic sea level history in the southeastern United States. *TER-QUA Symposium Series*, 1, 3–6.
- Tanner, W. F., 1985, Fundamental characteristics of stream meanders. *Geological Society of America Bulletin*, 96, 1095.
- Violante, R., and Tanner, W. F., 1985, Rain waves and swash

- zone ripple marks: Why are they mutually exclusive? *Journal of Coastal Research* 1 (4), 375–381.
- 1986
- Tanner, W. F., 1986, So-called bed load, the hydrograph and sediment transport. *Proceedings of the 3rd International Symposium on River Sedimentation*, Oxford, MS: School of Engineering, University of Mississippi, 875–883.
- Tanner, W. F., 1986, Minimum gradients on natural streams. *In: Sigbymarson, G., (ed.), Proceedings, Iceland Coastal and River Symposium*, Reykjavik, Iceland: N.E.A., 327–338.
- Tanner, W. F., and Spicola, J., 1986, The asymmetrical “a-b-c . . .” model. *In: Sigbymarson, G., (ed.), Proceedings, Iceland Coastal and River Symposium*, Reykjavik, Iceland, N.E.A., 369–387.
- Tanner, W. F., 1986, Atmosphere, evolution of. *In: Oliver, J. E., and Fairbridge, R. W., (eds.), Encyclopedia of Climatology*, New York: van Nostrand Reinhold, 126–131.
- Tanner, W. F., 1986, Geomorphology and climate. *In: Oliver, J. E., and Fairbridge, R. W., (eds.), Encyclopedia of Climatology*, New York: van Nostrand Reinhold, 461–463.
- Tanner, W. F., 1986, Hurricanes, beach effects of. *In: Oliver, J. E., and Fairbridge, R. W., (eds.), Encyclopedia of Climatology*, New York: van Nostrand Reinhold, 496–497.
- Tanner, W. F., 1986, Inherited and mixed traits in the grain size distribution. *In: Tanner, W. F., (ed.), Suite Statistics and Sediment History, Proceedings of the 7th Symposium on Coastal Sedimentology*, Tallahassee, FL: Department of Geology, Florida State University, 9–21.
- Tanner, W. F., and Campbell, K., 1986, Interpretation of grain size suite data from two small lakes in Florida. *In: Tanner, W. F., (ed.), Suite Statistics and Sediment History, Proceedings of the 7th Symposium on Coastal Sedimentology*, Tallahassee, FL: Department of Geology, Florida State University, 51–62 p.
- Demirpolat, S., Tanner, W. F., and Clark, D., 1986, Subtle mean sea level changes and sand grain size data. *In: Tanner, W. F., (ed.), Suite Statistics and Sediment History, Proceedings of the 7th Symposium on Coastal Sedimentology*, Tallahassee, FL: Department of Geology, Florida State University, 113–128.
- 1987
- Tanner, W. F., 1987, The beach: Where is the “River of Sand?” *Journal of Coastal Research*, 3 (3), 377–386.
- Demirpolat, S. and Tanner, W. F., 1987, Advanced grain size analysis and late Holocene sea level history. *In: Kraus, N. C., (ed.), Coastal Sediments 87*, New York: American Society of Civil Engineers, 1718–1731.
- Tanner, W. F., 1987, Forecast: Warmer climate, sea level fall [Abstract], *Programm with Abstracts, XII, INQUA*, Ottawa; 275.
- Tanner, W. F., Demirpolat, S., and Alvarez, L., 1987, The “Gulf of Mexico” sea level curve [Abstract], *Programme with Abstracts XII INQUA*, Ottawa; 274.
- Tanner, W. F., 1987, Spatial and temporal factors controlling overtopping of coastal ridges. *In: Singh, V. P., (ed.), Flood Hydrology*, Dordrecht: D. Reidel Publishing Co., 241–248.
- 1988
- Tanner, W. F. 1988, Beach ridge data and sea level history from the Americas. *Journal of Coastal Research*, 4 (1), 81–91.
- Tanner, W. F., and Demirpolat, S., 1988, New beach ridge type: Severely limited fetch, very shallow water. *Transactions of the Gulf Coast Association of Geological Societies*, 38, 367–373.
- Tanner, W. F., 1988, Natural desilicification of quartzites. *In: Balasubramaniam, K. S., and others (eds.), Weathering, its Products and Deposits*, Athens, Greece: Theophrastus Publications.
- Tanner, W. F., 1988, Paleogeographic inferences from suite statistics: Late Pennsylvanian and early Permian strata in Central Oklahoma. *Shale Shaker*, 38 (4), 62–66.
- Tanner, W. F., 1988, Which way sea level? *Coastal Research*, 8 (3), 1–3.
- Tanner, W. F., 1988, News note. TER-QUA climate meeting. *EOS*, 69 (52), 1674
- Tanner, W. F., 1988, News note. TER-QUA discusses climate. *Geotimes*, 34 (1), 21 ff.
- Tanner, W. F., 1988, New light on mean sea level change. *Coastal Research*, 8 (4), 12–16.
- 1989
- Tanner, W. F., Demirpolat, S., Stapor, F. W., and Alvarez, L., 1989, The “Gulf of Mexico” late Holocene sea level curve. *Transactions of the Gulf Coast Association of Geological Societies*, 39, 553–562.
- Tanner, W. F., and Hummell, R., 1989, The annual-tide tidal flat near Boca Chica, Texas. *Transactions of the Gulf Coast Association of Geological Societies*, 39, 590.
- Demirpolat, S., Tanner, W. F., Hodge, S. A., and Knoblauch, M. A., 1989, High-precision mapping of changes of Florida shoreline. *In: Tanner, W. F., (ed.), Proceedings of the 8th Symposium on Coastal Sedimentology*, Tallahassee, FL: Department of Geology, Florida State University, 7–20.
- Tanner, W. F., 1989, Using dE/dR to predict beach erosion rates. *In: Tanner, W. F., (ed.), Proceedings of the 8th Symposium on Coastal Sedimentology*, Tallahassee, FL: Department of Geology, Florida State University, 41–46.
- Tanner, W. F., 1989, Johnson Shoal: Clues to beach ridge plain origin and history. *In: Tanner, W. F., (ed.), Proceedings of the 8th Symposium on Coastal Sedimentology*, Tallahassee, FL: Department of Geology, Florida State University, 97–106.
- Tanner, W. F., Demirpolat, S., and Hummell, R., 1989, The annual-tide tidal flat near Boca Chica, Texas. *In: Tanner, W. F., (ed.), Proceedings of the 8th Symposium on Coastal Sedimentology*, Tallahassee, FL: Department of Geology, Florida State University, 281–286.
- 1990
- Tanner, W. F., 1990, What’s so important about the Gulf of Mexico? *Coastal Research*, 9 (1), 1–2.
- Tanner, W. F., 1990, Origin of barrier islands on sandy coasts. *Transactions of the Gulf Coast Association of Geological Societies*, 40, 819–824.
- Tanner, W. F., 1990, Will sea level drop in the future? *Abstracts, Gulf Coast Intertidal Marsh Conference*, Florida A. & M. University, Tallahassee, FL, 10–14.

- Tanner, W. F., 1990, Mean sea level changes vs isostasy near Jerup, Denmark. *In: Modern Coastal Sediments and Processes, Proceedings of the 9th Symposium on Coastal Sedimentology*, Tallahassee, FL: Department of Geology, Florida State University, 31–40.
- Tanner, W. F., 1990, The relationship between Kurtosis and wave energy. *In: Tanner, W. F., (ed.), Modern Coastal Sediments and Processes, Proceedings of the 9th Symposium on Coastal Sedimentology*, Tallahassee, FL: Department of Geology, Florida State University, 41–50.
- Tanner, W.F., 1990, The freeboard problem. *In: Belousoy, V., and others (eds.), Critical aspects of the Plate Tectonic Theory, Vol. I, Athens, Greece: Theophrastus Publications, 435 p.*
- Donoghue, J. F., Demirpolat, S., and Tanner, W. F., 1990, Recent shoreline changes, northeastern Gulf of Mexico. *In: Tanner, W. F., (ed.), Modern Coastal Sediments and Processes, proceedings of the 9th Symposium on Coastal Sedimentology*, Tallahassee, FL: Department of Geology, Florida State University, 51–66.
- 1991
- Tanner, W. F., 1991, Suite statistics: the hydrodynamic evolution of the sediment pool. *In: Syvitski, J. P. M., (ed.), Principles, Methods and Application of Particle Size Analysis*; Cambridge: Cambridge University Press, 225–236.
- Tanner, W. F., 1991, Application of suite statistics to stratigraphy and sea level changes. *In: Syvitski, J. P. M., (ed.), Principles, Methods and Application of Particle Size Analysis*, Cambridge: Cambridge Univ. Press; 283–292.
- Tanner, W. F., 1991, The “Gulf of Mexico” late Holocene sea level curve and river delta history. *Transactions of the Gulf Coast Association of Geological Societies*, 41, 583–589.
- Demirpolat, S., and Tanner, W. F., 1991, Keys to high accuracy mapping of shoreline changes. *Coastal Sediments '91*; American Society of Civil Engineers.
- 1992
- Tanner, W.F., 1992, 3000 years of sea level change. *Bulletin of the American Meteorological Society*, 73, 297–303.
- Tanner, W. F., 1992, Late Holocene sea-level changes from grain-size data: Evidence from the Gulf of Mexico. *The Holocene*, 2, 258–263.
- Tanner, W. F., 1992, Natural environment. *In: Fernald, E. A., and others (eds.), Atlas of Florida*, Gainesville: University Press of Florida, 12–77.
- Tanner, W.F., 1992, The Jerup beach ridges. *Coastal Research*, 10 (2), 6–10.
- Tanner, W.F., 1992, Climate theory uncertainty. *Geotimes*, 37 (9), 4.
- Tanner, W.F., 1992, Detailed Holocene sea level curve. *International Coastal Congress, ICC-Kiel '92; Abstract Volume*, 98.
- Tanner, W. F., 1992, Oversize oxbows: Tentative dates! effects and risks. *Transactions of the Gulf Association of Geological Societies*, 42, 727–734.
- Donoghue, J. F., and Tanner, W. F., 1992, Quaternary terraces and shorelines of the Panhandle Florida region. *In: Fletcher, C. H, III, and Wehmiller, J. F., (eds.), Quaternary Coasts of the United States: Marine and Lacustrine Systems*, Tulsa: SEPM Special Publication No. 48, 233–241.
- 1993
- Tanner, W. F., 1993, Detailed Holocene sea level curve, northern Denmark. *In: Sterr, J., Hofstede, J., Plag, H. P., and Lang, P., (eds.), Proc. of International Coastal Congress ICC-Kiel '92; Frankfurt am Main, Germany; 748–757.*
- Tanner, W. F., 1993, An 8,000-year record of sea level change from grain-size parameters: Data from beach ridges in Denmark. *The Holocene*, 3, 220–231.
- Tanner, W. F., and Donoghue, J. F., 1993, *Northeastern Gulf of Mexico Coast. Field trip Guidebook*. Southeastern Section Meeting, Geological Society of America, Tallahassee, FL: Geology Department B-160, Florida State University, 40 p.
- Tanner, W. F., 1993, Louisiana cheniers: Clues to Mississippi delta history. *In: Kay, R., and Magoon, O., (eds.), Deltas of the World, Coastlines of the Worlds*, New York: American Society of Civil Engineers, 71–84.
- Tanner, W. F., 1993, Little Ice Age and other sea level controls in the last 8,000 years. *Resumenes/Abstracts, 13th International Congress of Anthropological and Ethnological Sciences*, Mexico City: The cultural and biological dimensions of global change, 445.
- Tanner, W. F., 1993, Louisiana cheniers: Settling from high water. *Transactions of the Gulf Coast Association of Geological Societies*, 43, 391–397.
- Tanner, W. F., 1993, Environmental analysis of sandstones and quartzites from the Tallahatta Formation, near Meridian, Mississippi. *Mississippi Geology*, 14 (4), 61–70.
- Tanner, W. F., 1993, Climate and sea level change. [book review], *Bulletin of the American Meteorological Society*, 74 (12), 2392–2394.
- 1994
- Tanner, W. F., 1994, Holocene stability of the Gulf of Mexico coast, from beach ridges. *Transactions of the Gulf Coast Associations of Geological Societies*, 44, 721–727.
- Tanner, W. F., 1994, The Darss. *Coastal Research*, 11, 1–6.
- Donoghue, J. F., and Tanner, W. F., 1994, Effects of near-term sedimentologic evolution on the lifetime of estuarine resources. *National Oceanic and Atmospheric Administration Technical Memorandum, NOS-SRD-27*; Washington, D.C.; 57 p.
- Tanner, W. F., 1994, Shoreline warping in ‘stable’ areas. *TERQUA Symposium Series*, Lincoln, Nebraska: Institute for Tertiary-Quaternary Studies, 2, 93–106.
- 1995
- Tanner, W. F., 1995, Do beach ridge data provide a good basis for forecasts? *Unity in Diversity, AAAS Annual Meeting Abstracts Volume*, 28.
- Balsillie, J. H., 1995, William F. Tanner on Environmental clastic granulometry. [Tanner, W. F., ed.], *Florida Geological Survey Special Publication No. 40*; 142 p.
- Tanner, W. F., 1995, How many trees did Noah take on the ark? *Perspectives on Science and Christian Faith*, 47 (4), 1–4.
- Tanner, W. F., 1995, Introduction: Beach Ridges. *Marine Geology*, 129, 147.
- Tanner, W. F., 1995, Origin of beach ridges and swales. *Marine Geology*, 129, 149–161.
- Tanner, William F., 1995, Sudden change: Climate and sea level. [Abstract], *Transactions of the Gulf Coast Association. of Geological Societies*, 45, 646–647.

- Tanner, W. F., 1995, Dynamic basis for a shore-normal equilibrium profile. *Geologic Society of Amer Annual Meeting Abstracts Volume*, 428.
- Tanner, W.F., and Silva, C. G., 1995, Tall ridge at Cabo de Sao Tome, Brazil. *Proceedings of the 11th Symposium on Coastal Sedimentology*, Universidade Federal Fluminense, Niteroi, R.J., Brazil; 99–105.
- 1996
- Tanner, William F., 1996, Real world stratigraphv and the Noachian flood. *Perspectives on Science and Christian Faith*, 48 (1), 1–4.
- Tanner, William F., 1996, Quartzites, silica cement and granulometry *In: Theophrastus' Contributions to Advanced Studies in Geology*, Athens, Greece: Theophrastus Publications, 1, 219–228.
- Tanner, W. F., 1996, The tall beach ridge at Cabo SEi Tome, Brazil. *Coastal Research*, 12 (1), 2–7.
- Tanner, W. F., 1996, Real world stratigraphy and the Noachian flood. *Perspectives on Science and the Christian Faith*, 48 (1), 44–47.
- Tanner, W. F., 1996, Beach ridge history, sea level change, and the A.D. 536 event. [Abstract], *Southeastern Archeological Conference Bulletin*, 39, 51.
- Tanner, W. F., 1996, Origin of beach ridges: Reply. *Marine Geology*, 136, 126.
- 1997
- Tanner, W. F., 1997, Clues to inshore wave parameters. *Geological Society of America, 46th Annual Southeastern Section, 1997 Abstracts with Programs*, 29 (3), 72.
- Tanner, W. F., 1997, Depositional environments in the Cretaceous near Montgomery. *Geological Society of America, 46th Annual Southeastern Section, 1997 Abstracts with Programs*, 29 (3), 72.
- Tanner, W. F., 1997, Wave-rider-buoy overview. *Coastal Research*, 12 (6), 1–4.
- Tanner, W. F., 1997, Repeated breaking, multiple crests. *Coastal Research*, 12 (4), 5–8.
- Balsillie, J. H., Tanner, W. F., and Williams, H. K., 1997, Sticky grain occurrences in sieving. *Geological Society of America, 46th Annual Southeastern Section, 1997 Abstracts with Programs*, 29 (3), 3.
- Balsillie, J. H., and Tanner, W. F., 1997, Suite versus composite statistics. *Geological Society of America, 46th Annual Southeastern Section, 1997 Abstracts with Programs*, 29 (3), 3.
- 1998
- Tanner, W. F., Balsillie, J. H., and Williams, H. K., 1998, Origins of Florida panhandle terrace sands. [Abstract], *American Association of Petroleum Geologist Bulletin*, 82 (9), 1792–1793.
- Tanner, W. F., Balsillie, J. H., and Williams, H. K., 1998, Origins of Florida panhandle terrace sands. *Transactions of the Gulf Coast Association of Geological Societies*, 48, 431–438.
- Tanner, W. F., 1998, Coastal sand hills near Cedar Key, Fla. *Coastal Research*, 13 (2), 7–11.
- Tanner, W. F., 1998, Polymodal deep-water wave-rider buoy data. *Coastal Research*, 13 (1), 8–13.
- 1999
- Balsillie, J. H., Tanner, W. F., and Williams, H. K., 1999, Sticky grain occurrences in sieving. *Florida Geological Survey Special Publication No. 78*, 37 p.
- Balsillie, J. H., and Tanner, W. F., 1999, Suite versus composite statistics. *Sedimentary Geology*, 125 (3–4), 225–234.
- Balsillie, J. H., and Tanner, W. F., 1999, Stepwise regression in geological pursuits using an important coastal example. *Environmental Geology*, 6 (2), 99–105.
- 2000
- Balsillie, J. H., and Tanner, W. F., in review, Wave height measurement and analysis: historical overview, shortcomings, and corrections. *Journal of Coastal Research*.
- Balsillie, J. H., and Tanner, W. F., in press, Red flags on the beach, part II. *Journal of Coastal Research*.

James H. Balsillie
Tallahassee, Florida
April 2000