
**COASTAL PHOTOGRAPH BY THE ILLINOIS
DEPARTMENT OF NATURAL RESOURCES**

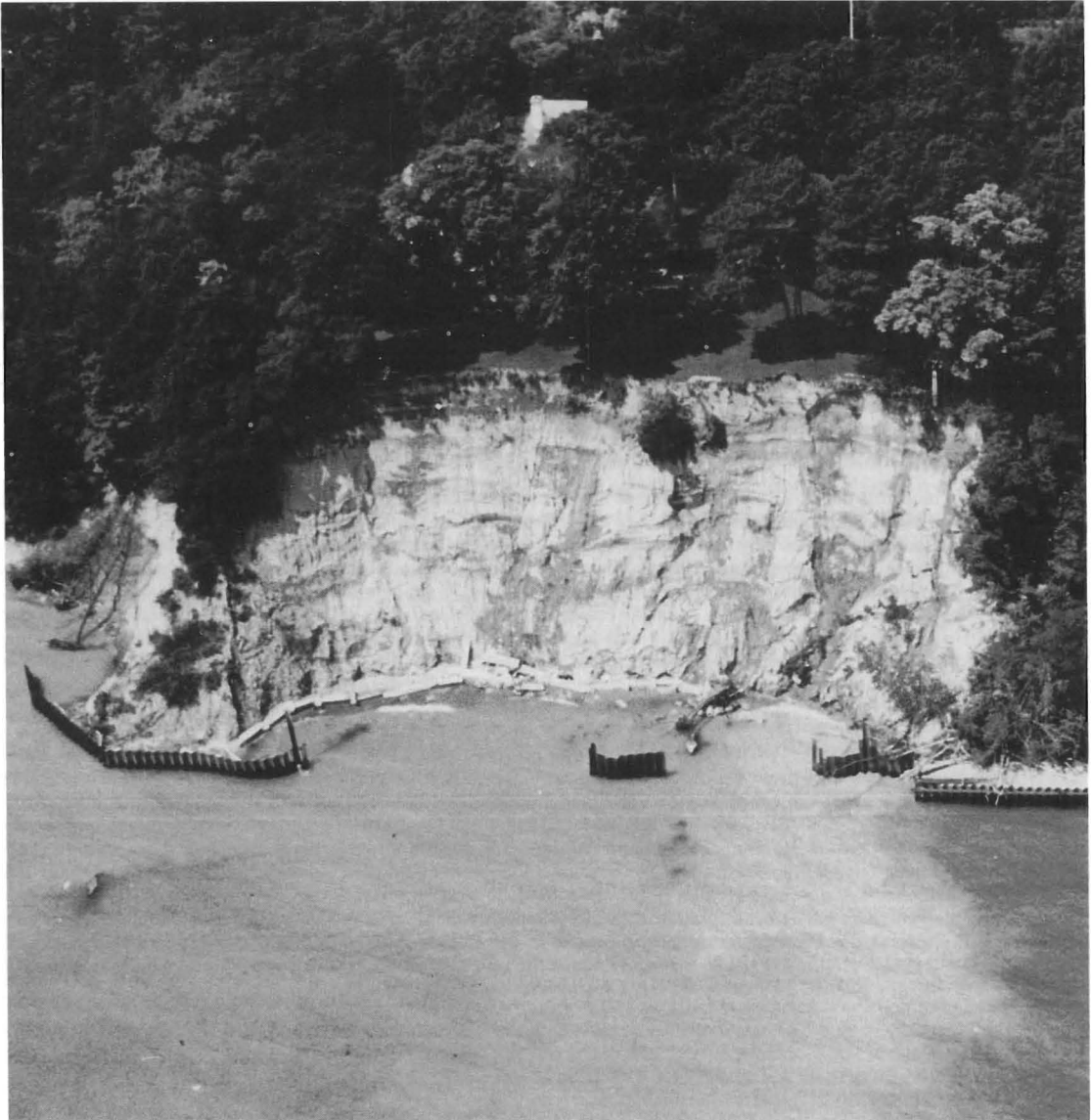


PHOTO52. Lake Michigan shore at Lake Bluff, Illinois. The bulkhead shown here failed in 1969 or 1970. All recession behind the structure occurred between 1970 and 1974. On the right, where the bulkhead has been maintained, the bluff has remained vegetated and stable. The houses on the top of the bluff are less than 50 feet from the bluff edge. Note the submerged groins and debris. The photo was taken in August 1974 when the lake level 580.7 IGLD. Unstable sand, silt, clay, and brown silty till compose more than the upper half of the scarp. Homogenous gray till composes approximately the lower half.