
COASTAL PHOTOGRAPH BY CHARLES W. FINKL, SR.

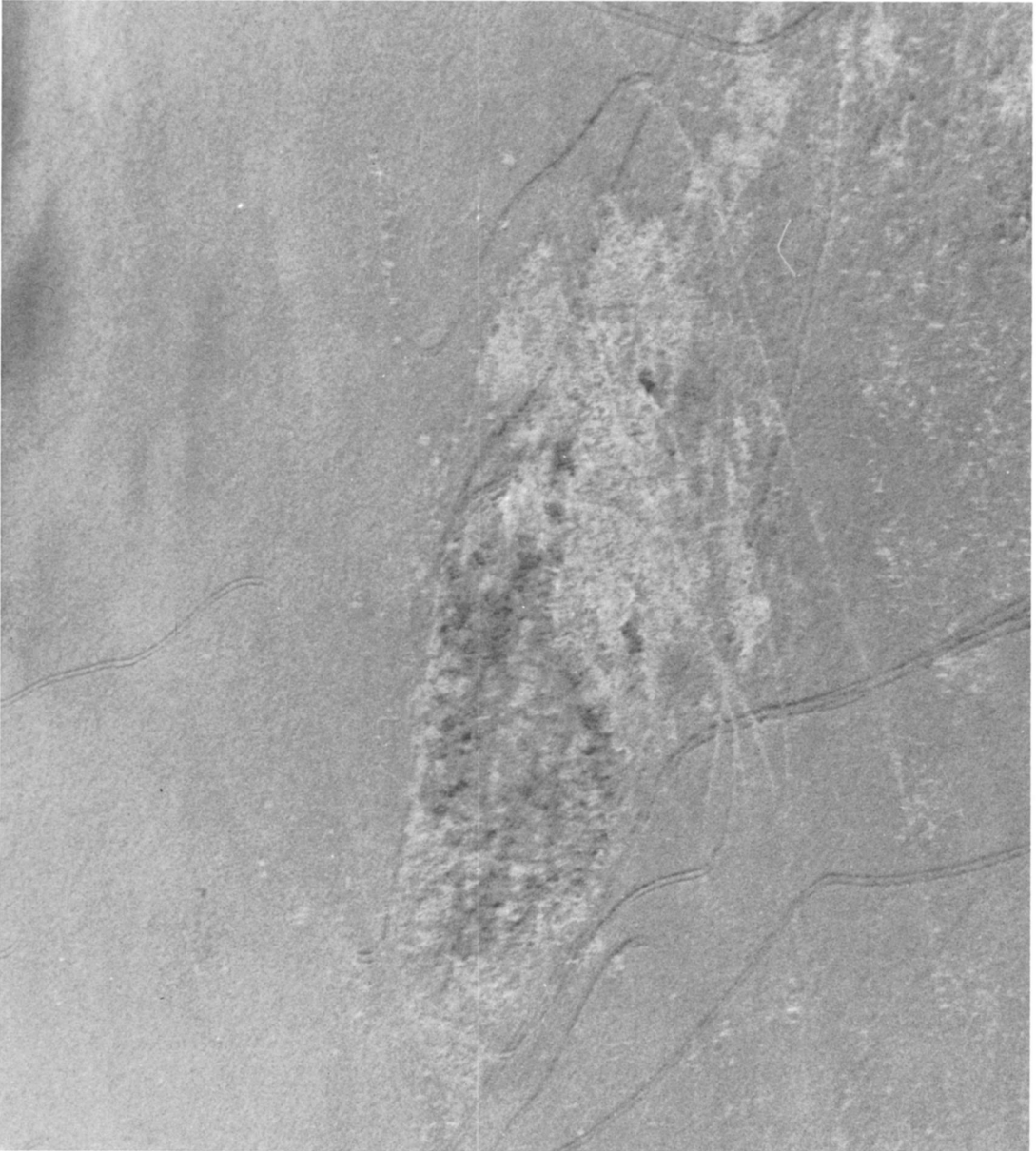


PHOTO 96. Hammock in the Florida Everglades. Sometimes referred to as a 'River of Grass,' this large coastal wetland is one of the Earth's most unusual biophysical features. It is managed by the South Florida Water Management District, one of the largest flood control projects in the United States. Small hammocks (tree islands) such as the one in the photo center often contain rare fauna and flora. The delicate ecological balance of many coastal hammocks is threatened by human activity, evidenced by the numerous tracks from swamp buggies and air boats. (Charles W. Finkl, Sr., Evanston, IL).