
COASTAL PHOTOGRAPH BY R.W.G. CARTER

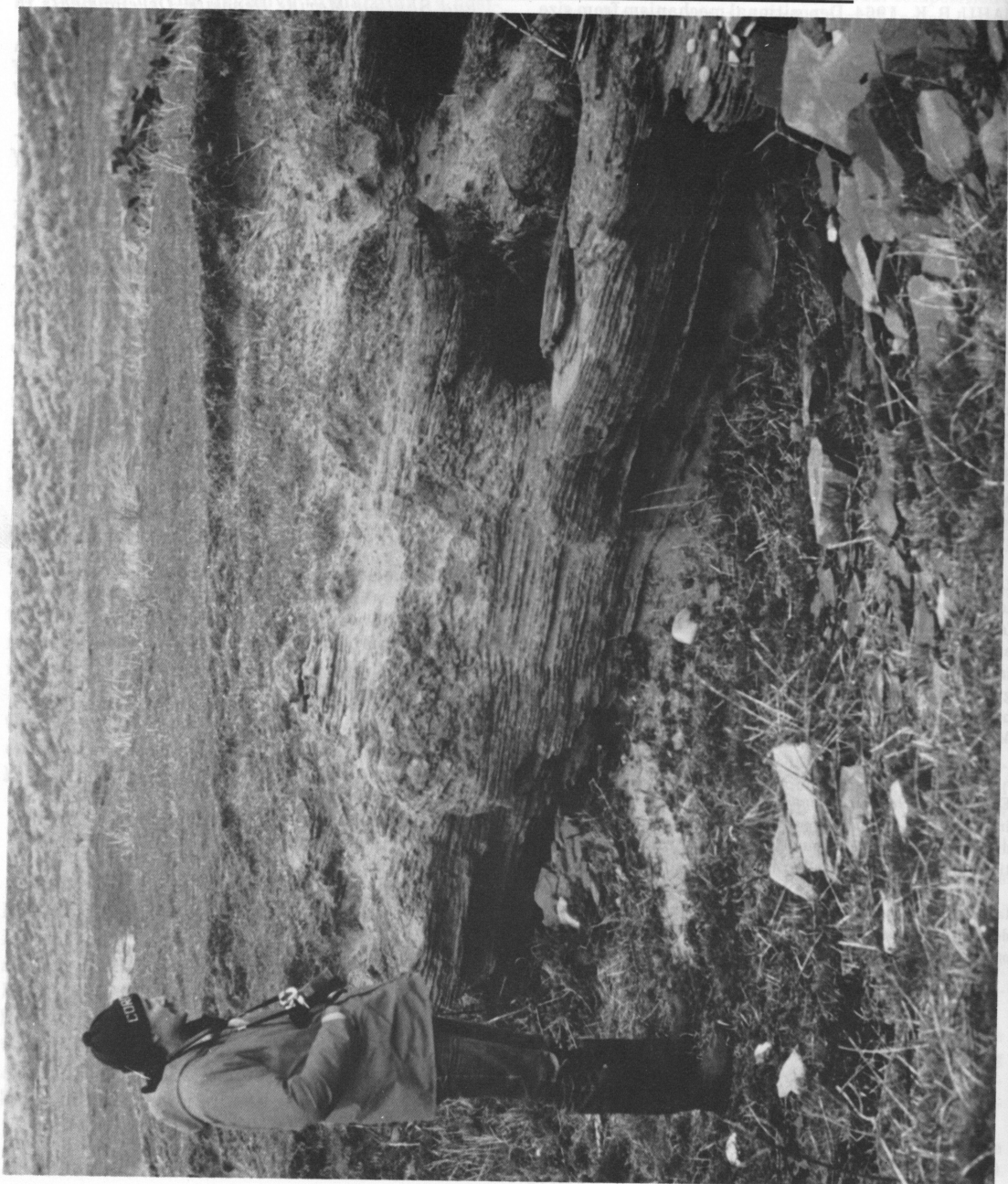


PHOTO 138. Outcrops of calcreted beach and dune sediments are common in high altitudes where water table percolation remobilises carbonates. These seaward-dipping beach ridge sands at Trawenagh Bay, Northwest Ireland are overlain by dunes. The deposits probably date from the mid-Holocene when sea-level was about 1 to 2 metres higher than present. (Photo: R.W.G. Carter, Department of Environmental Studies, University of Ulster, Coleraine BT52 1SA, Northern Ireland).