
COASTAL PHOTOGRAPH BY FRED E. CAMFIELD

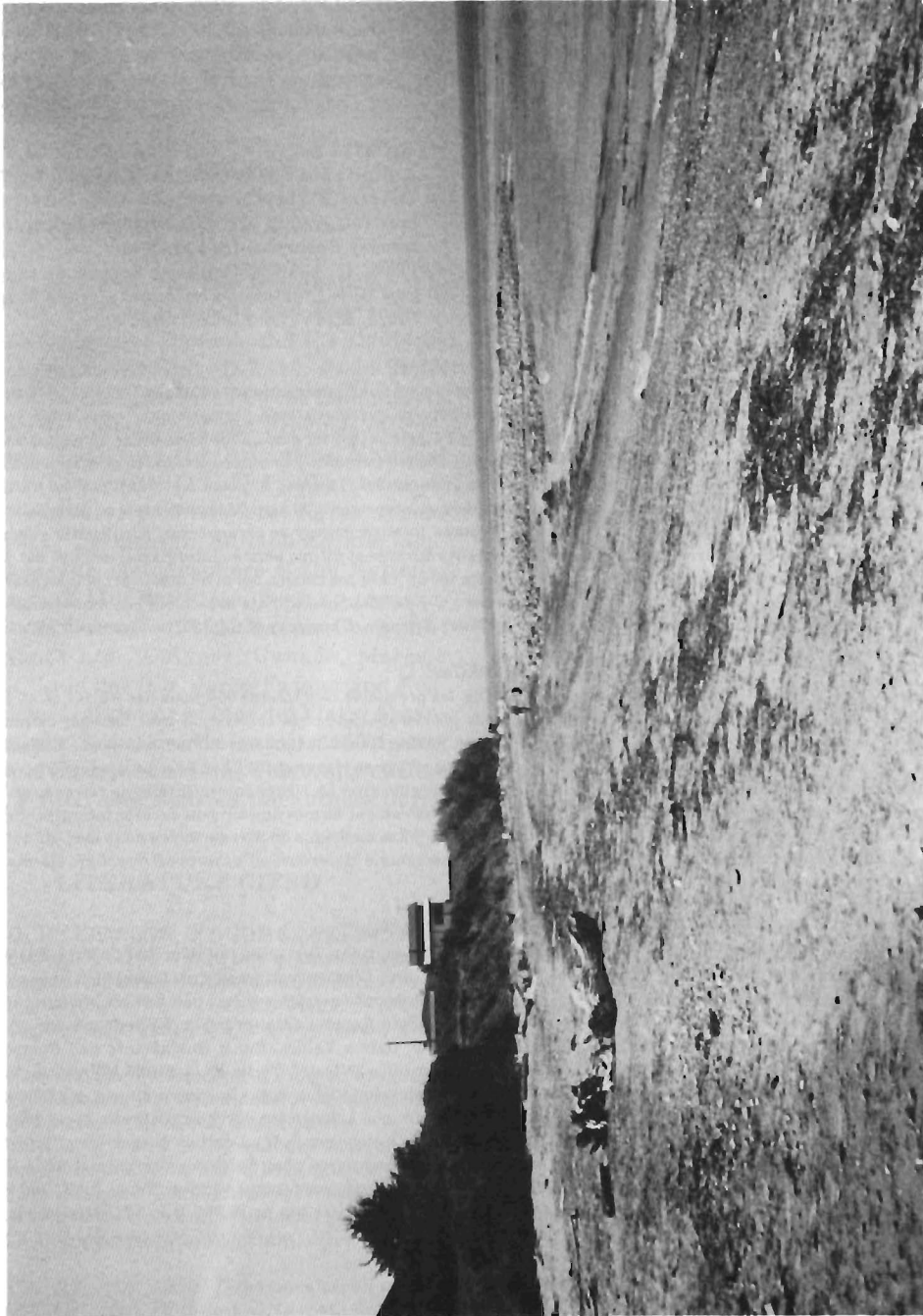


Photo 131. North Beach Park, Port Townsend, WA. Deposits of cobble sized material form small headlands along the beach (June 1989). (Photo: Fred E. Camfield, Wave Dynamics Division, US Army Waterways Experiment Station, PO Box 631, Vicksburg, MS 39180, USA).