
COASTAL PHOTOGRAPH BY FRED E. CAMFIELD

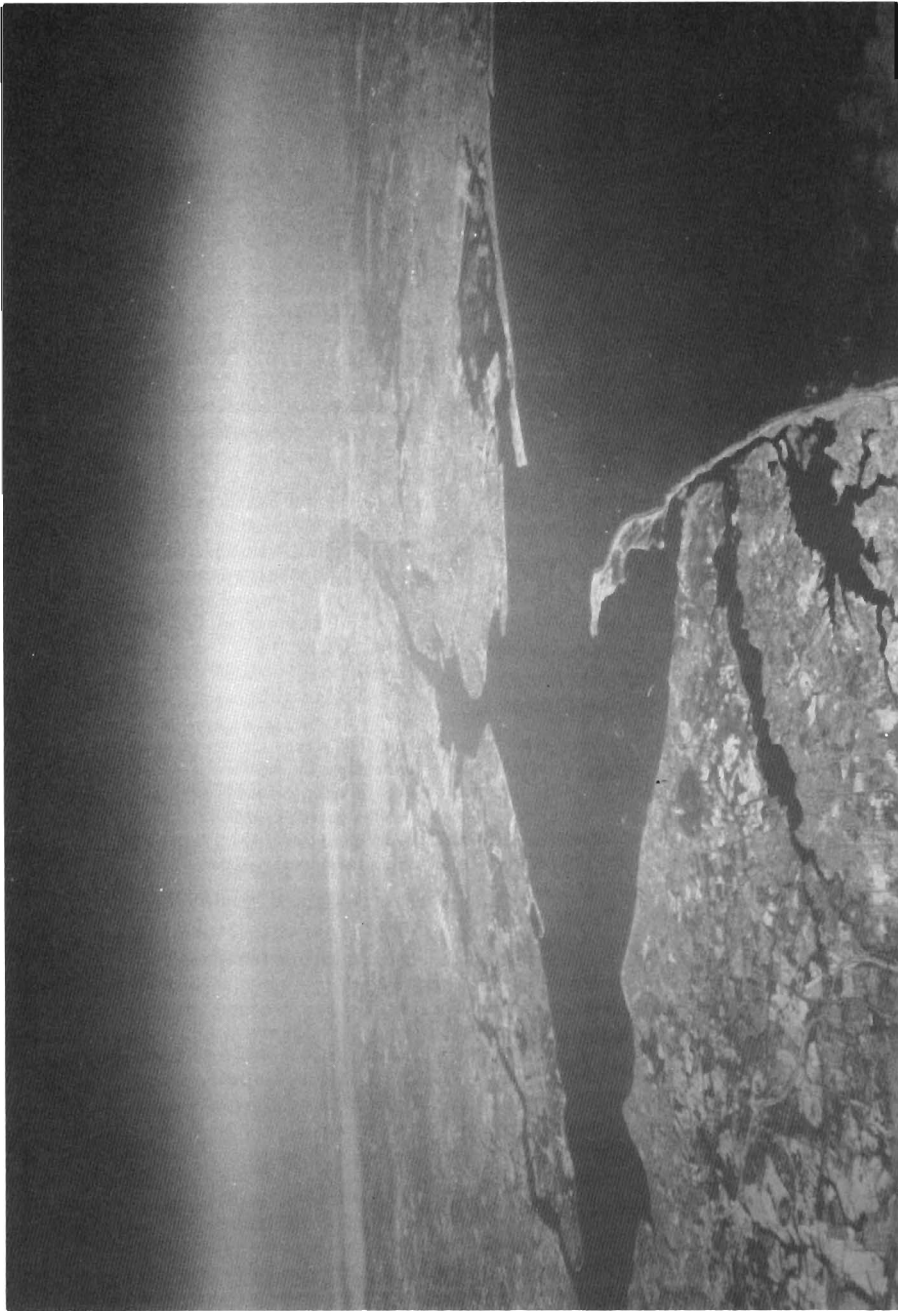


PHOTO 127. Lower New York Harbor and New York Bight, Sandy Hook in the Foreground. Long-shore transport is to the north along the New Jersey coastline, and to the west along the south shore of Long Island. (Photo: Fred E. Camfield, Wave Dynamics Division, US Army Waterways Experiment Station, PO Box 631, Vicksburg, MS 39180, USA).