
COASTAL PHOTOGRAPH BY
CHARLES W. FINKL, JNR.

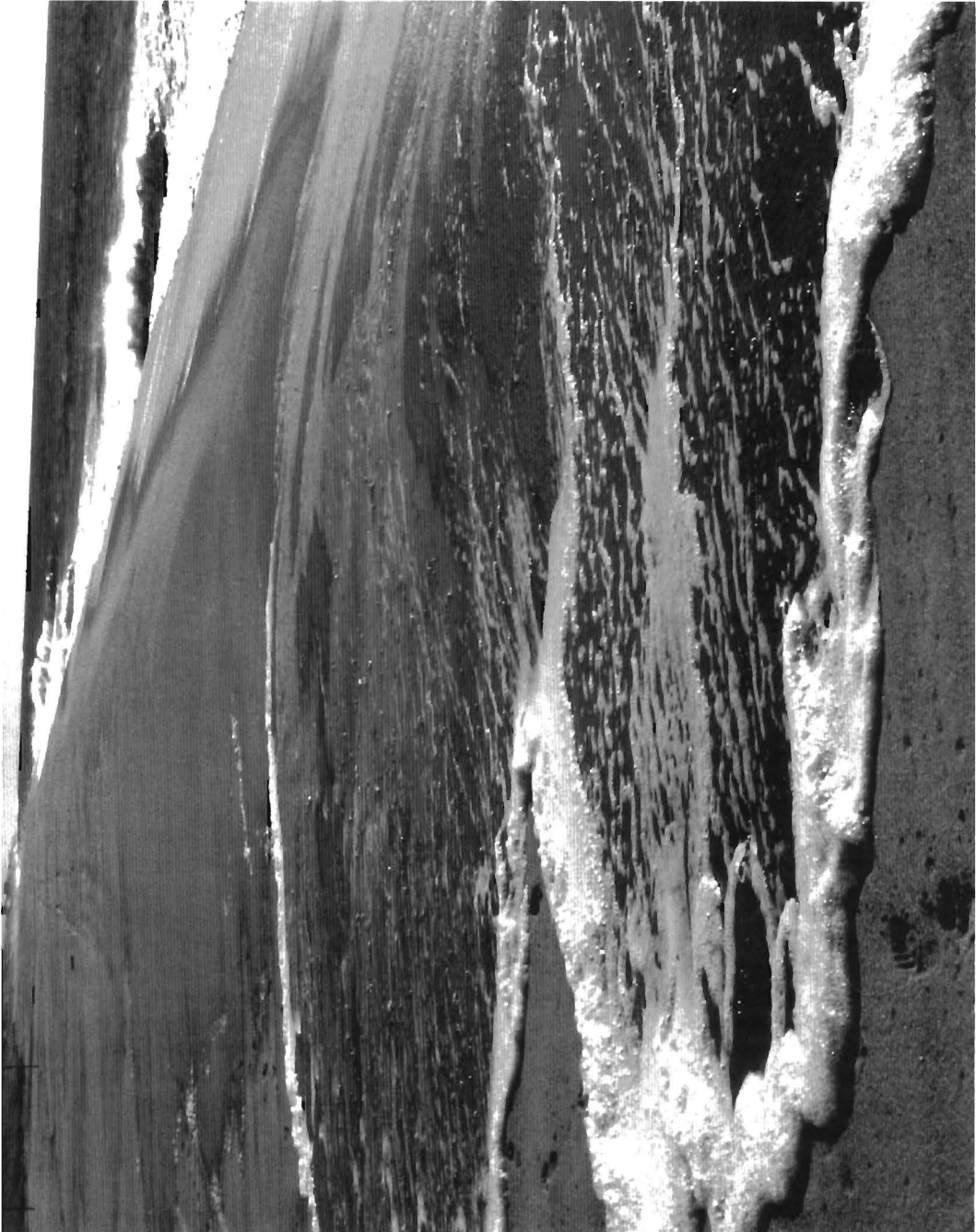


PHOTO 62 Summer berm at Amagansett Beach, Long Island (New York), being overtopped by swash from large swells generated by a storm offshore. The run up and overtopping process moves sediment from the berm crest toward the foredunes along the back beach. Note the small overwash fans along the back-berm area (photo center). (Photo by Charles W. Finkl, Jnr., Coastal Education and Research Foundation, Charlottesville, VA 22906: August 1983).