

Supplementary Material for **Meshram, Naresh M., N. S. Chandra Bose R. and V. V. Ramamurthy — Review of the leafhopper genus *Phlogotettix* Ribaut (Hemiptera: Cicadellidae: Deltocephalinae) with description of a new species from India.** Florida Entomologist 98(1) (March 2014) at <http://purl.fcla.edu/fcla/entomologist/browse>

Naresh M. Meshram, N. S. Chandra Bose R. and V. V. Ramamurthy
National Pusa Collection, Division of Entomology, Indian Agricultural Research Institute,
New Delhi 110012, INDIA

Corresponding author; E-mail: nmmeshram@gmail.com

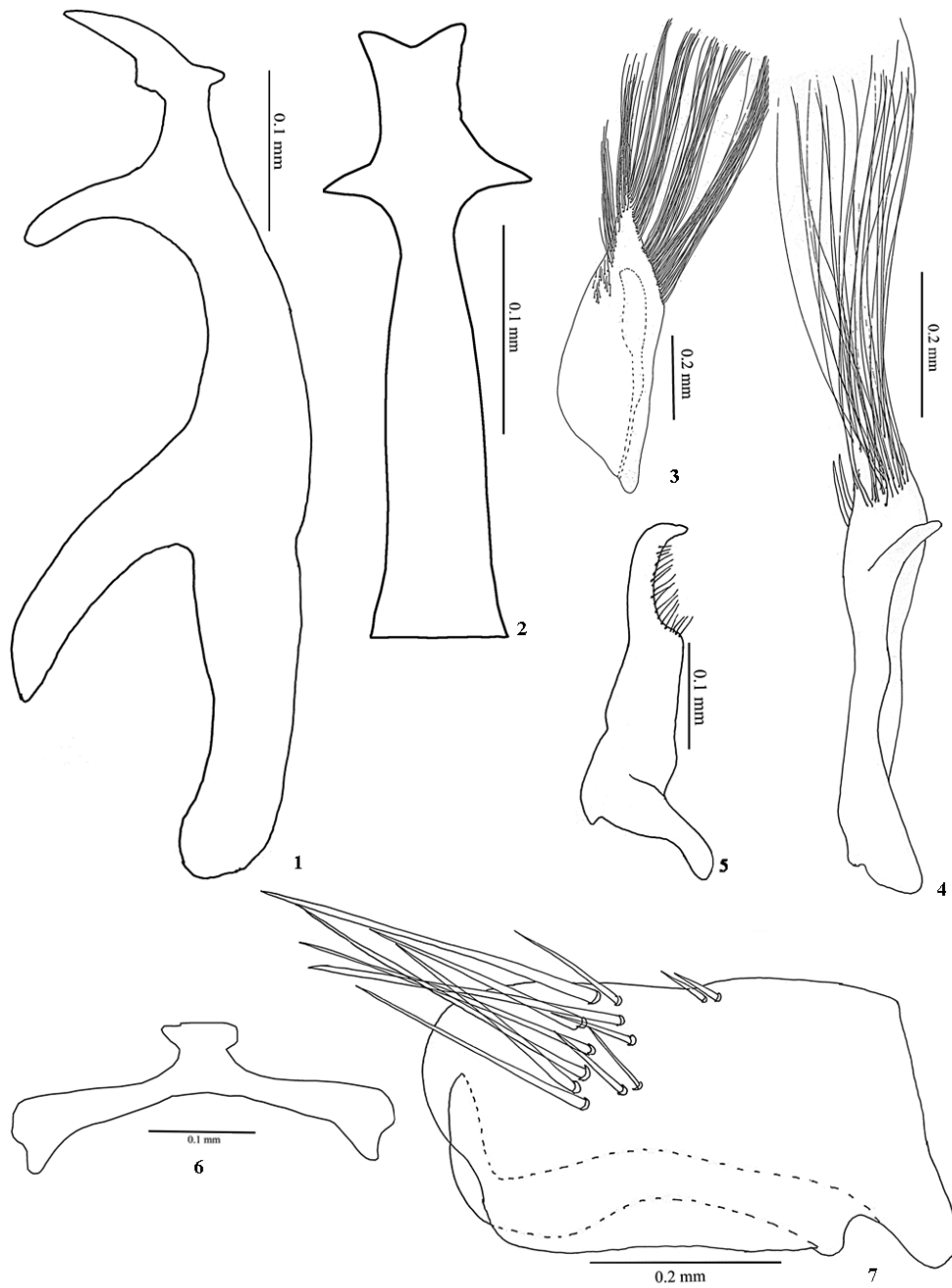
Abstract

The leafhopper genus *Phlogotettix* Ribaut (Hemiptera: Cicadellidae: Deltocephalinae) is reviewed, and to the 10 species known so far, one new species *Phlogotettix subhimalayanus* **sp. nov.** is added and described. The latter has been analyzed for its mtCOI. *Phlogotettix indicus* Rao is redescribed. An annotated checklist and key to the species is also provided.

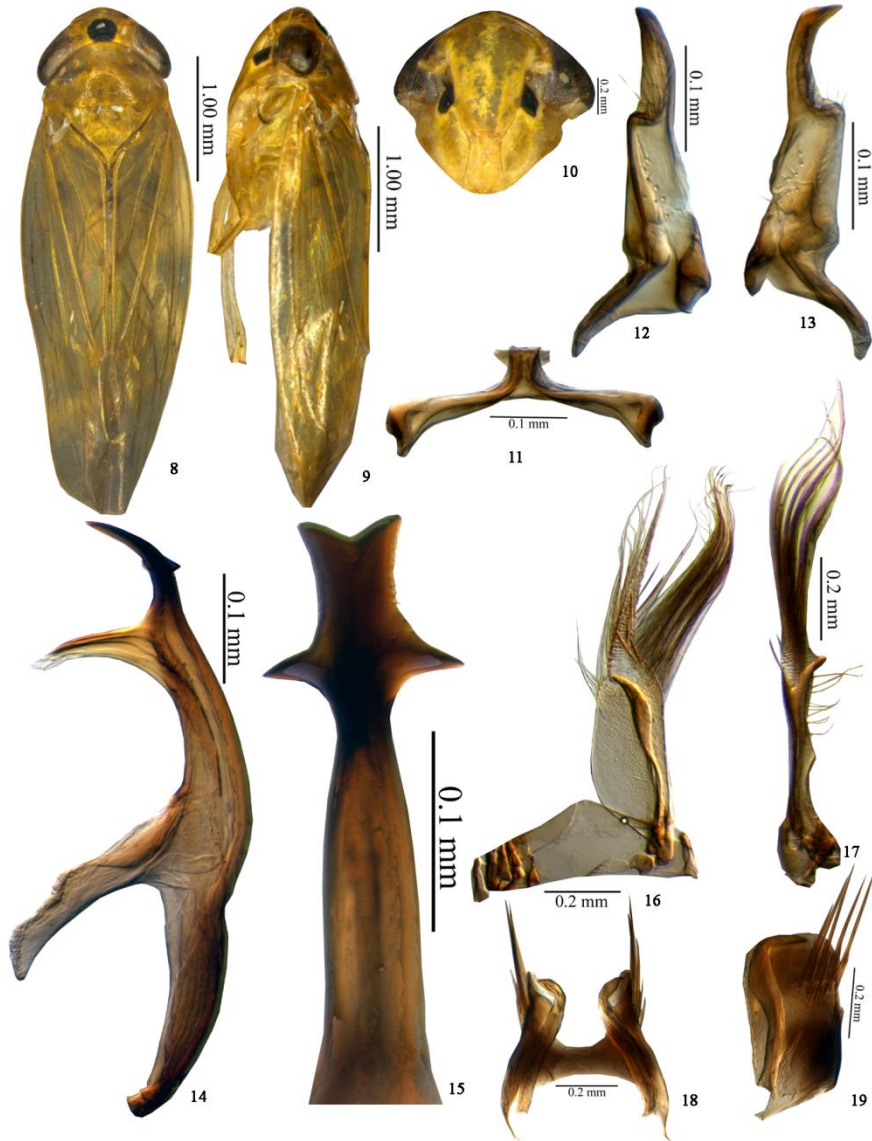
Key Words: leafhoppers, *Phlogotettix* spp., Scaphoideini, checklist, key. mtCOI

Resumen

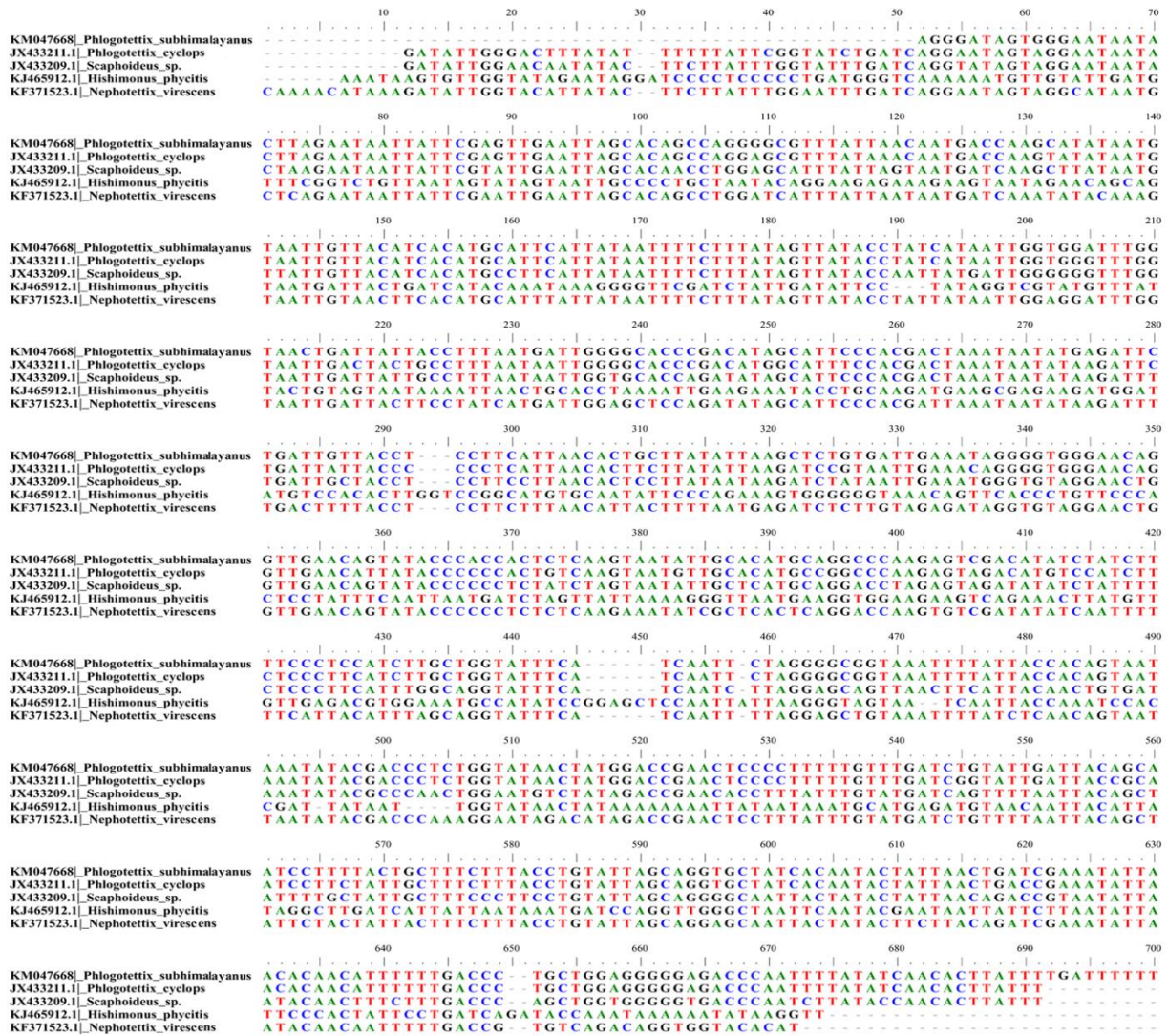
Palabras Clave:



Suppl. Figs. 1–7. Male genitalia of *Phlogotettix subhimalayanus* **sp. nov.** 1, 2. Aedagus, lateral & caudal view; 3, 4. Subgenital plate, dorsal & lateral view; ; 5. Style ventral view; 6. Connective; 7. Pygofer.

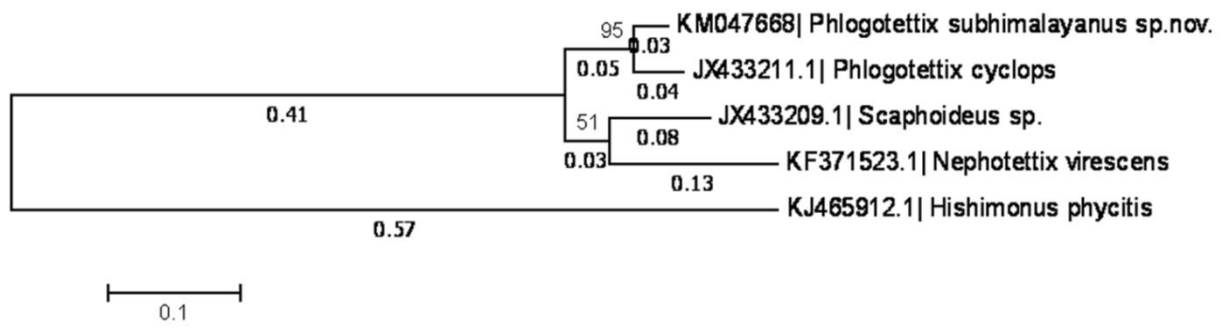


Suppl. Figs. 8–19. Habitus, face and male genitalia of *Phlogotettix subhimalayanus* sp. nov. male 8. Habitus, dorsal view; 9. Habitus, lateral view; 10. Face; 11. Connective; 12. Style, dorsal view; 13. Style ventral view; 14. Aedeagus, lateral view; 15. Aedeagus, caudal view; 16. Subgenital plate, dorsal view; 17. Subgenital plate, lateral view; 18. Pygofer, lateral view; 19. Pygofer, ventral view.

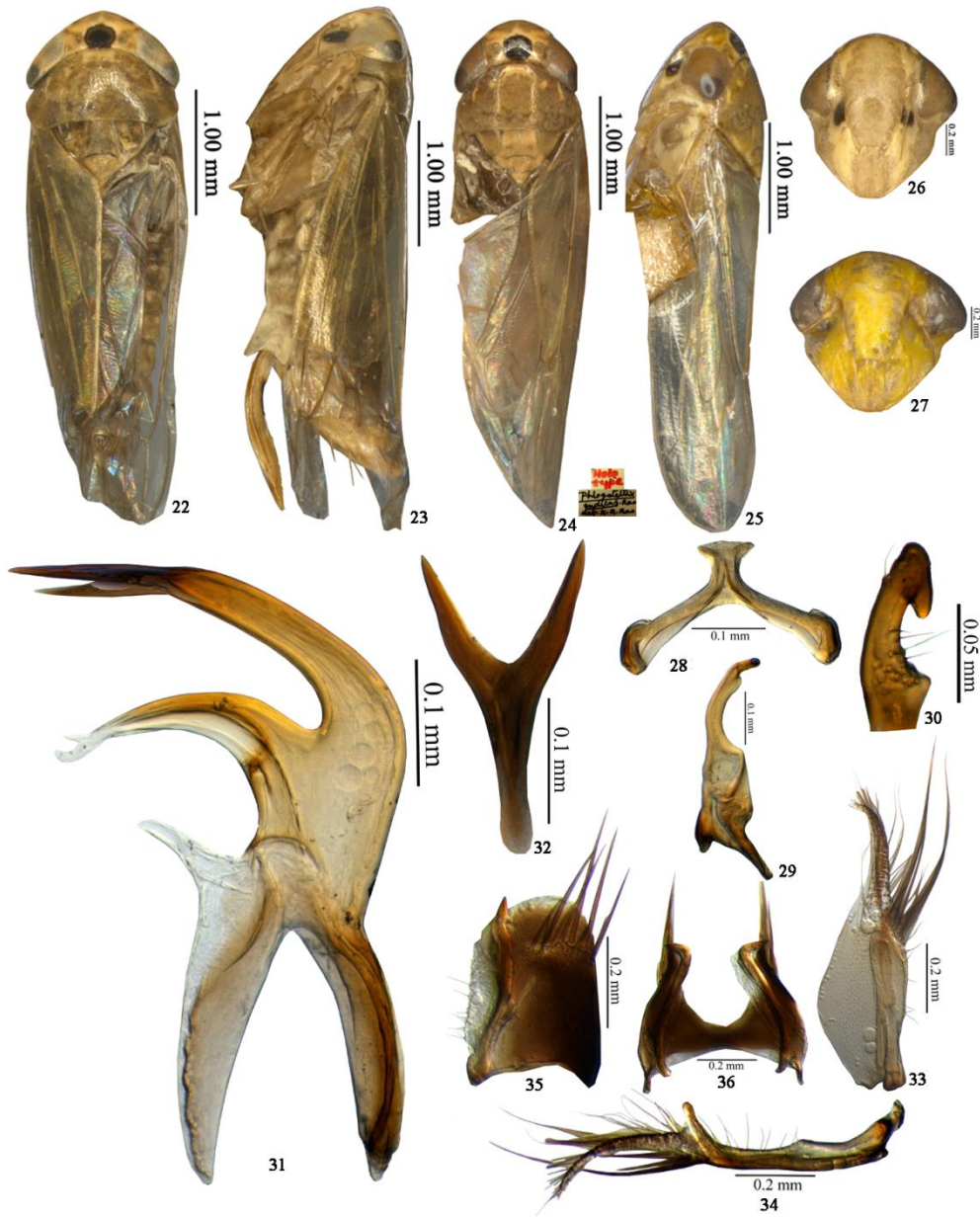


Suppl. Fig. 20. Nucleotide sequence map of mtCOI of *Phlogotettix subhimalayanus* sp. nov..

A colored version of this figure can be seen online in Florida Entomologist 98(1) (March 2015) at http://purl.fcla.edu/fcla/entomologist/browse_.



Suppl. Fig. 21. Relationships of *P. subhimalayanus* sp.nov and *P. cyclops* inferred using by Maximum Likelihood method and the Kimura 2-parameter distances of mitochondrial COI sequences. Bootstrap values are shown next to the branches.



Suppl. Figs. 22–36. Habitus, face and male genitalia of *Phlogotettix indicus* Rao 22 & 23 female 22–23. Habitus, dorsal & lateral view; 24–36 male 24–25. Habitus, dorsal & lateral view; 26–27 Face; 28. Connective; 29–30. Style, dorsal & lateral view; 31. Aedeagus, lateral view; 32. Aedeagus, caudal view; 33–34. Subgenital plate, dorsal & lateral; 35–36. Pygofer, lateral &

ventral view. A colored version of this figure can be seen online in Florida Entomologist 98(1) (March 2015) at <http://purl.fcla.edu/fcla/entomologist/browse> .

