

Supplementary Material for NIHEI, SILVIO SHIGUEO AND MARCOS RIBEIRO DE ANDRADE—Revision of *Trypetidomima* (Diptera: Rhinophoridae) with a Description of a New Brazilian Species. Florida Entomologist 97(2) (June, 2014) at <http://purl.fcla.edu/fcla/entomologist/browse>

Corresponding author: Dr. Silvio Shigueo Nihei, Department of Zoology, Institute of Biosciences, University of São Paulo, Rua do Matão, Trav. 14, n.101, 05508-900 São Paulo, SP, Brazil; Phone 55 11 30917511; E-mail: silvionihei@gmail.com

ABSTRACT

Trypetidomima Townsend is a Neotropical Rhinophoridae genus with a single species, *T. lutea* Townsend, from southeastern Brazil. Based on comprehensive material from Atlantic Forest localities, we found a new species of *Trypetidomima*, herein described and named as *T. fusca* **sp. nov.**, with geographical occurrence in the State of São Paulo, southeastern Brazil. With the addition of this new species, the genus is redefined, and an identification key is provided to distinguish between the 2 known species. The type-species, *T. lutea* Townsend, is redescribed, including the description of the previously unknown female.

Key Words: Neotropical region, systematics, taxonomy.

RESUMO

Trypetidomima Townsend é um gênero neotropical de Rhinophoridae com somente uma espécie, *T. lutea* Townsend, do sudeste do Brasil. Com o estudo de um abrangente material proveniente de localidades da Mata Atlântica, encontramos uma nova espécie de *Trypetidomima*, aqui descrita e nomeada *T. fusca* **sp. nov.**, com distribuição geográfica conhecida para o Estado de São Paulo, sudeste do Brasil. Com a adição desta segunda espécie, o gênero é redefinido, e uma chave de identificação é fornecida para distinguir as duas espécies conhecidas até o momento. A espécie-tipo, *T. lutea* Townsend, é redescrita, incluindo a descrição da fêmea, antes desconhecida.

Palavras Chave: Região Neotropical, sistemática, taxonomia

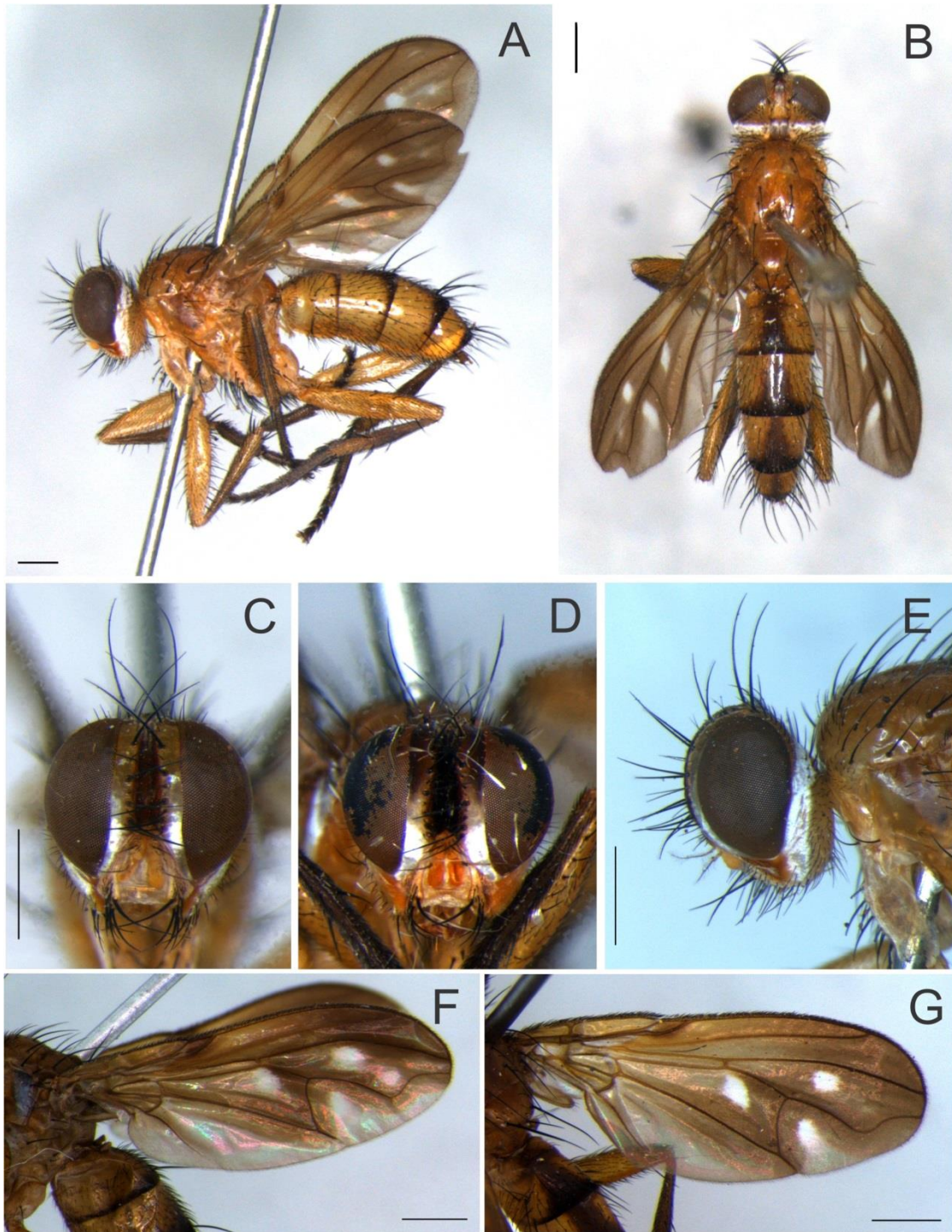


Fig. 1. *Trypetidomima lutea* Townsend. A, female, lateral habitus. B, female, dorsal habitus. C, female head, frontal view. D, male head, frontal view. E, female head, lateral view. F, female wing. G, male wing. (Scale bars = 1 mm) [See supplementary document with color plates online at <http://purl.fcla.edu/fcla/entomologist/browse.>]

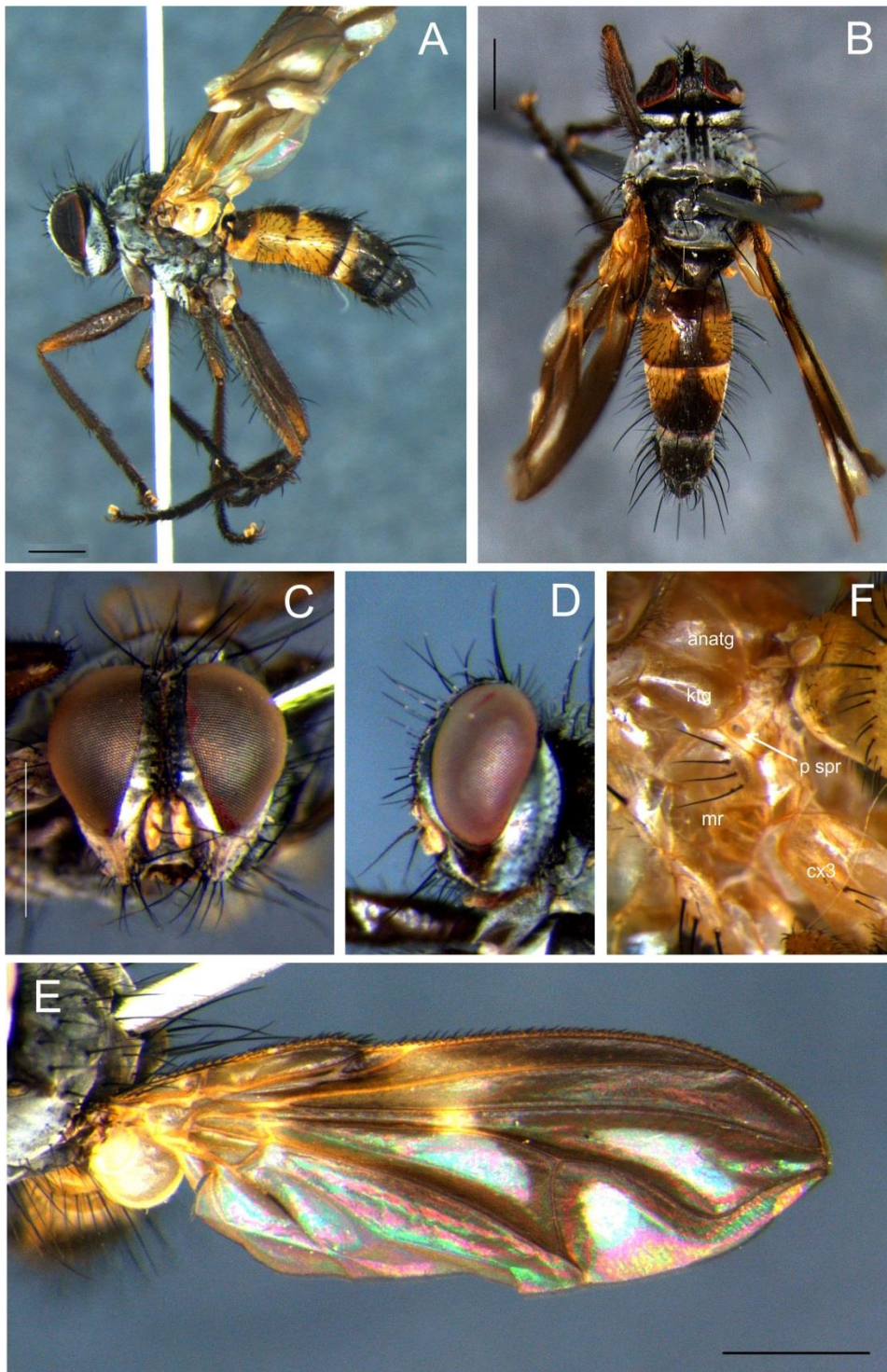


Fig. 2. *Trypetidomima fusca* sp. nov. A, male, lateral habitus. B, male, dorsal habitus. C, male head, frontal view. D, male head, frontal view. E, male wing. *Trypetidomima lutea* Townsend: F, posterior spiracle. (Legends: *anatg*, anatergite; *cx3*, hind coxa; *ktg*, katatergite; *mr*, meron; *p spr*, posterior spiracle) (Scale bars = 1 mm) [See supplementary document with color plates online at <http://purl.fcla.edu/fcla/entomologist/browse.>]

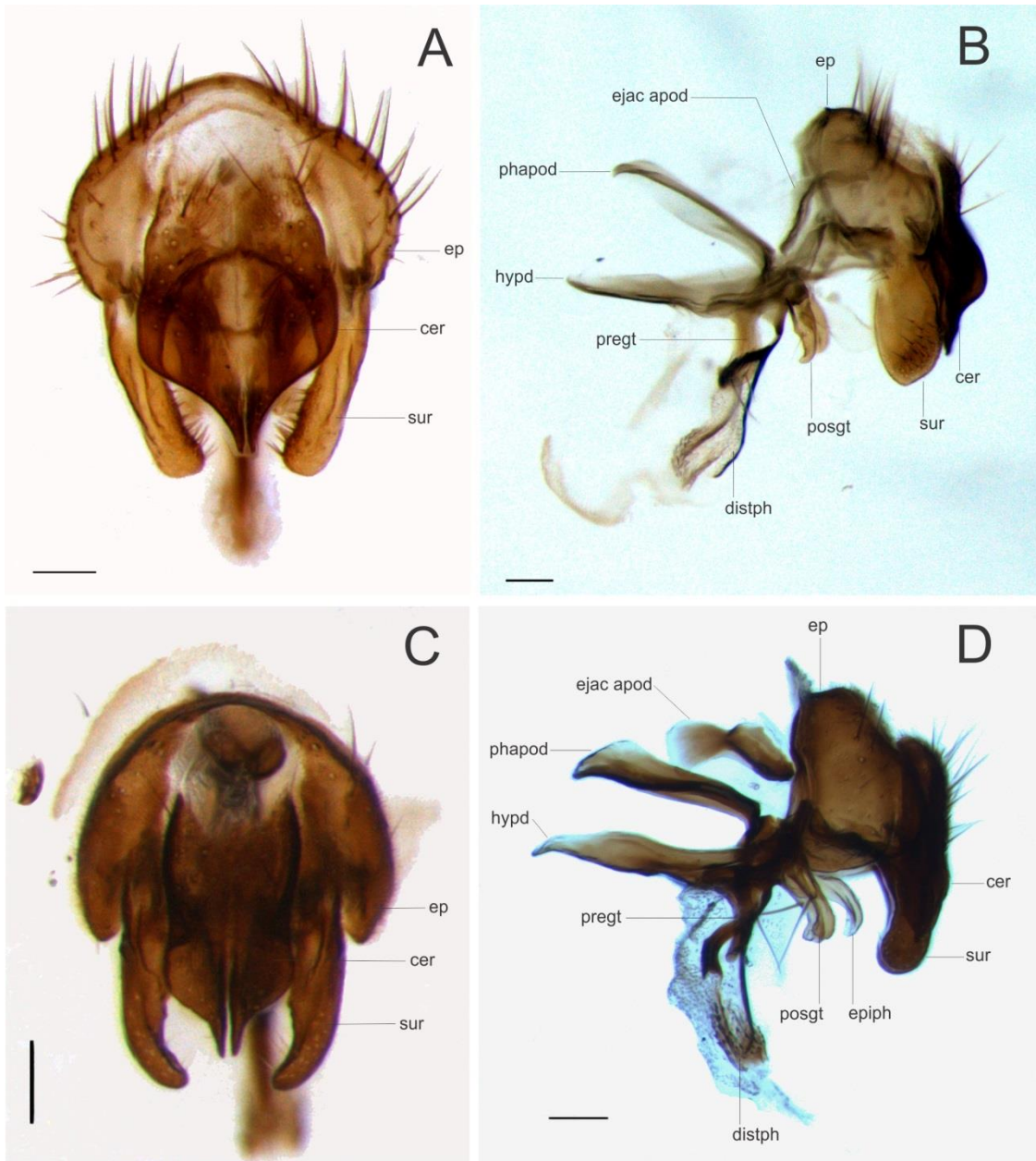


Fig. 3. *Trypetidomima lutea* Townsend. A, male, epandrium, cercal plate and surstyli, posterior view. B, male terminalia, lateral view. *Trypetidomima fusca* **sp. nov.** C, male, epandrium, cercal plate and surstyli, posterior view. D, male terminalia, lateral view. (Legends: *cer*, cercal plate; *distph*, distiphallus; *ejac apod*, ejaculatory apodeme; *ep*, epandrium; *epiph*, epiphallus; *hypd*, hypandrium; *phapod*, phallapodeme; *pregt*, pregonite; *posgt*, postgonite; *sur*, surstyli) (Scale bars: 0.1 mm) [See supplementary document with color plates online at <http://purl.fcla.edu/fcla/entomologist/browse.>]