

Supplementary Material for KYU-TEK PARK AND SANGMI LEE–A New Genus of Lecithoceridae (Lepidoptera, Gelechioidea), From New Guinea, with a Description of Two New Species. Florida Entomologist 96(1) (March, 2013) at <http://purl.fcla.edu/fcla/entomologist/browse>

Corresponding author: Sangmi Lee
School of Life Sciences
P.O. Box 874501
Arizona State University
Tempe, AZ 85287-4501, USA
PH: 480-965-2850; FAX: 480-965-6899
Email: microlepi@hotmail.com

ABSTRACT

Hannara Park *gen. nov.*, related to *Crocantnes* Meyrick, 1886 (Gelechioidea, Lecithoceridae), is described from New Guinea, based on the type species, *Hannara buloloensis* Park **sp. nov.** and *H. gentis* Park **sp. nov.** Illustrations of adults, labial palpi, and genitalia for the described species are provided.

Key Words: *Hannara*, new genus, New Guinea, Taxonomy

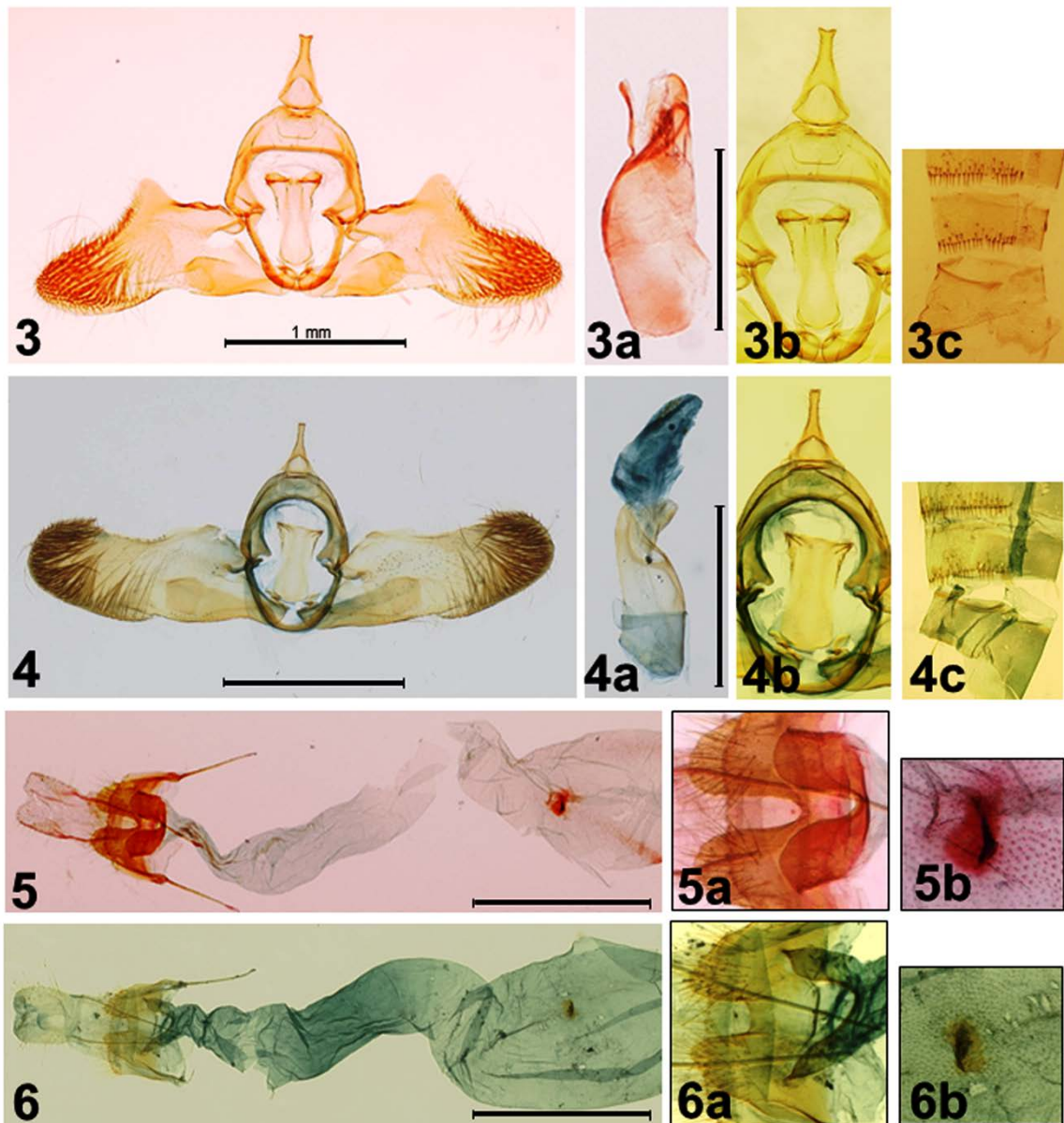
RESUMEN

Hannara Park **gen. nov.**, relacionado al *Crocantnes* Meyrick, 1886 (Gelechioidea, Lecithoceridae), se describe de Nueva Guinea basado en la especie tipo *Hannara buloloensis* Park **sp. nov.** y *H. gentis* Park **sp. nov.** Se ilustran los adultos, los palpos labiales, y la genitalia de las nuevas especies

Palabras Clave: *Hannara*, Lecithoceridae, género nuevo, Nueva Guinea, taxonomía



Figs. 1–2. Adults, antenna, labial palpus, and hind tibia of *Hannara*. 1, Adult of *H. buloloensis* **sp. nov.** Park; 1a, antenna of female; 1b, labial palpus; 1c, hind tibia; 1d, label of the holotype. 2, Adult of *H. genialis* **sp. nov.** Park; 2a, antenna of male; 2b, labial palpus; 1c, hind tibia; 1d, label of the holotype.



Figs. 3–6. Male and female genitalia of *Hannara*. 3, Male genitalia of *H. buloloensis* **sp. nov.** Park; 3a, aedeagus; 3b, close-up of uncus and juxta; 3c, abdominal segments. 4, Male genitalia of *H. genialis* **sp. nov.** Park; 4a, aedeagus; 4b, close-up of uncus and juxta; 4c, abdominal segments. 5, Female genitalia of *H. buloloensis* **sp. nov.** Park; 5a, close-up of ostial part; 5b, close-up of uncus and juxta; 5c, abdominal segments. 6, Female genitalia of *H. genialis* **sp. nov.** Park; 6a, close-up of ostial part; 6b, close-up of uncus and juxta; 6c, abdominal segments. Scale bar: 1 mm.