

Supplementary Material for ZHIMIN CHANG AND XIANGSHENG CHEN—*Tambinia bambusana* sp. nov., a New Bamboo-Feeding Species of Tambiniini (Hemiptera: Fulgoromorpha: Tropiduchidae) from China. Florida Entomologist 95(4) (December, 2012) at <http://purl.fcla.edu/fcla/entomologist/browse>

Corresponding author: XIANG-SHENG CHEN

Institute of Entomology, Guizhou University
Guiyang, Guizhou Province 550025, Peoples' Republic of China
Phone: 86-851-8290213; Email: chenxs3218@163.com

ABSTRACT

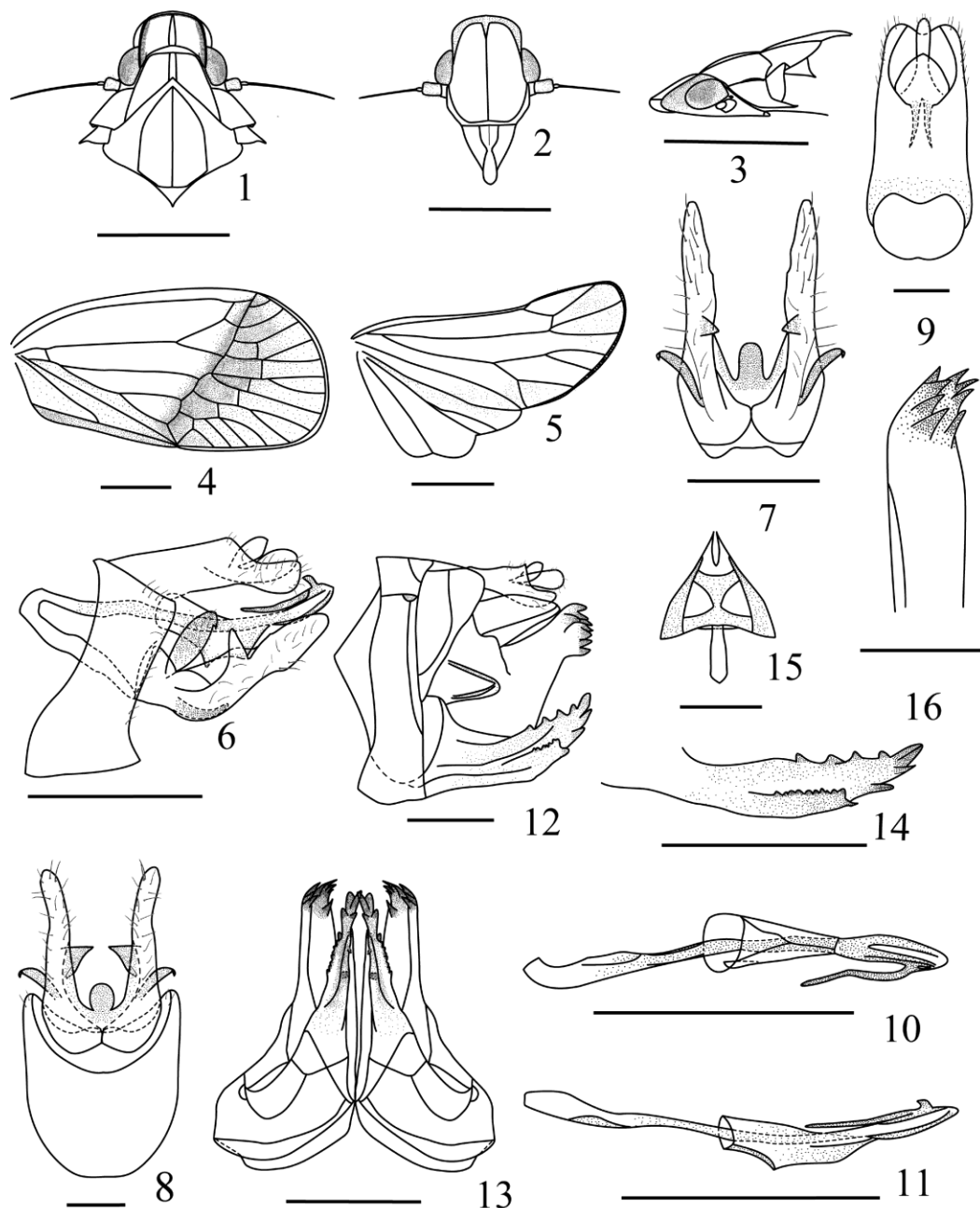
Tambinia bambusana sp. nov. (Hemiptera: Fulgoromorpha: Tropiduchidae: Tambiniini), a new species feeding on *Dendrocalamus latiflorus* Munro (Poaceae: Bambusoideae), is described and illustrated from Guizhou and Guangxi, China. This represents the first record of the members of genus *Tambinia* Stål feeding on bamboo. A key to all 25 species of *Tambinia* is given.

Key Words: bamboo-feeding planthoppers, Fulgoroidea, Oriental region, taxonomy

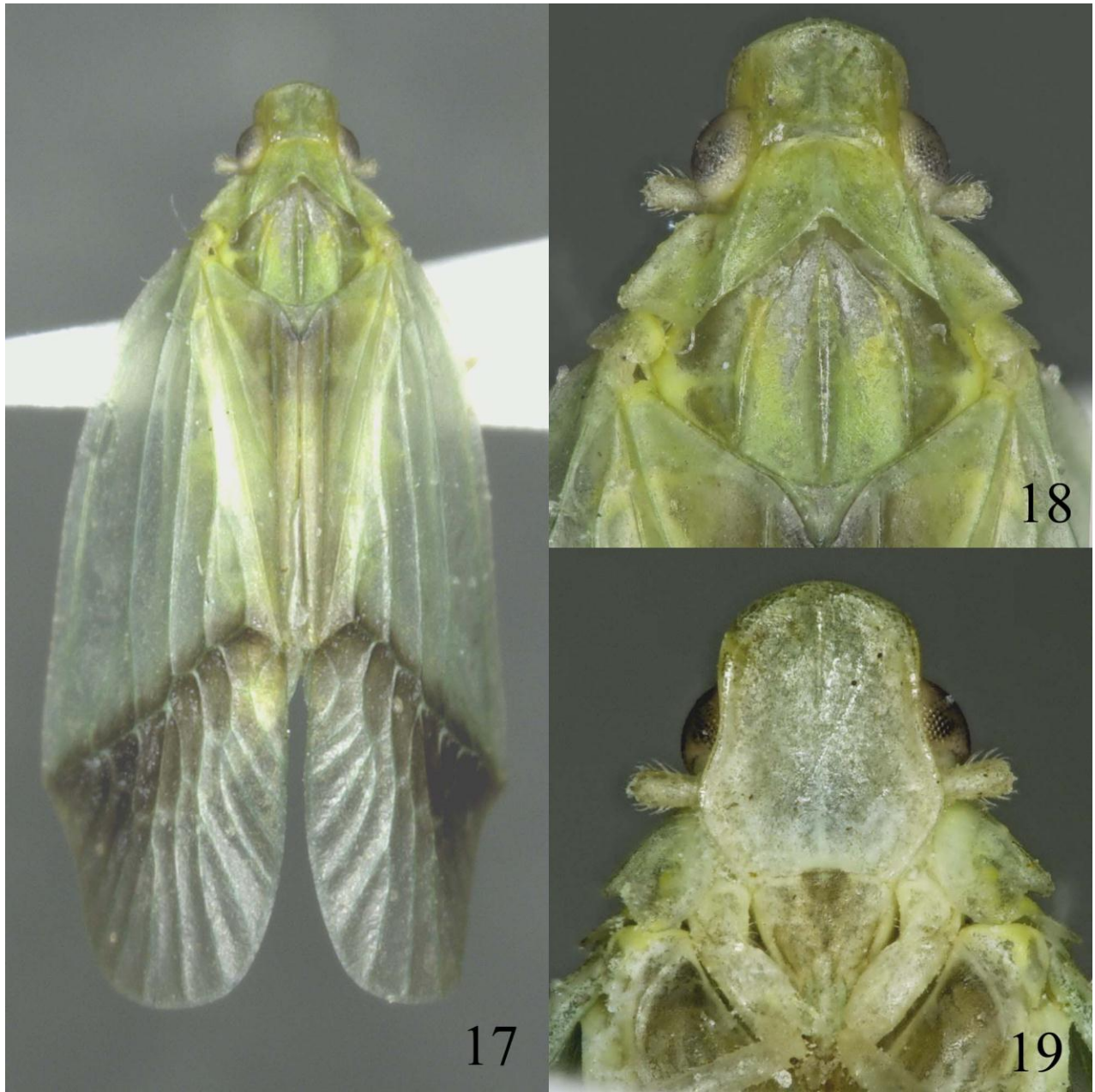
RESUMEN

Se describe e ilustra una nueva especie, *Tambinia bambusana* sp. nov. (Hemiptera: Fulgoromorpha: Tropiduchidae: Tambiniini) que se alimenta de *Dendrocalamus latiflorus* Munro (Poaceae: Bambusoideae) en Guizhou y Guangxi, China. Esta especie representa el primer registro de los miembros del género *Tambinia* Stål que se alimentan de bambú. Se provee una clave para las 25 especies conocidas de *Tambinia*.

Palabras Clave: machacas que se alimentan del bambú, Fulgoroidea, región oriental, taxonomía



Supplementary Figs. 1-16. *Tambinia bambusana* sp. nov. 1. Head and thorax, dorsal view; 2. Head, ventral view; 3. Head and thorax, lateral view; 4. Forewing; 5. Hind wing; 6. Male genitalia, lateral view; 7. Gonostylus, dorsal view; 8. Pygofer and gonostylus, ventral view; 9. Anal segment, dorsal view; 10. Aedeagus and periandrium, dorsal view; 11. Aedeagus and periandrium, lateral view; 12. Female genitalia, lateral view; 13. Female genitalia, ventral view; 14. First valvula, lateral view; 15. Second valvula, ventral view; 16. Tip of third valvula. Scale bars = 0.2 mm (Figs. 8, 9, 15, 16), 0.4 mm (Figs. 7, 12), 0.5 mm (Figs. 6, 10, 11, 13, 14), 1.0 mm (Figs. 1-5).



Supplementary Figs. 17-19. *Tambinia bambusana* **sp. nov.** 17. Dorsal habitus (♂); 18. Head and thorax, dorsal view; 19. Head and thorax, ventral view.



Supplementary Figs. 20-21. Host plant of *Tambinia bambusana* **sp. nov.** 20. View of the area where the specimens of *T. bambusana* were captured, in Nandan (Guangxi, China) with *Dendrocalamus latiflorus* Munro; 21. View of the plant, *D. latiflorus* Munro.