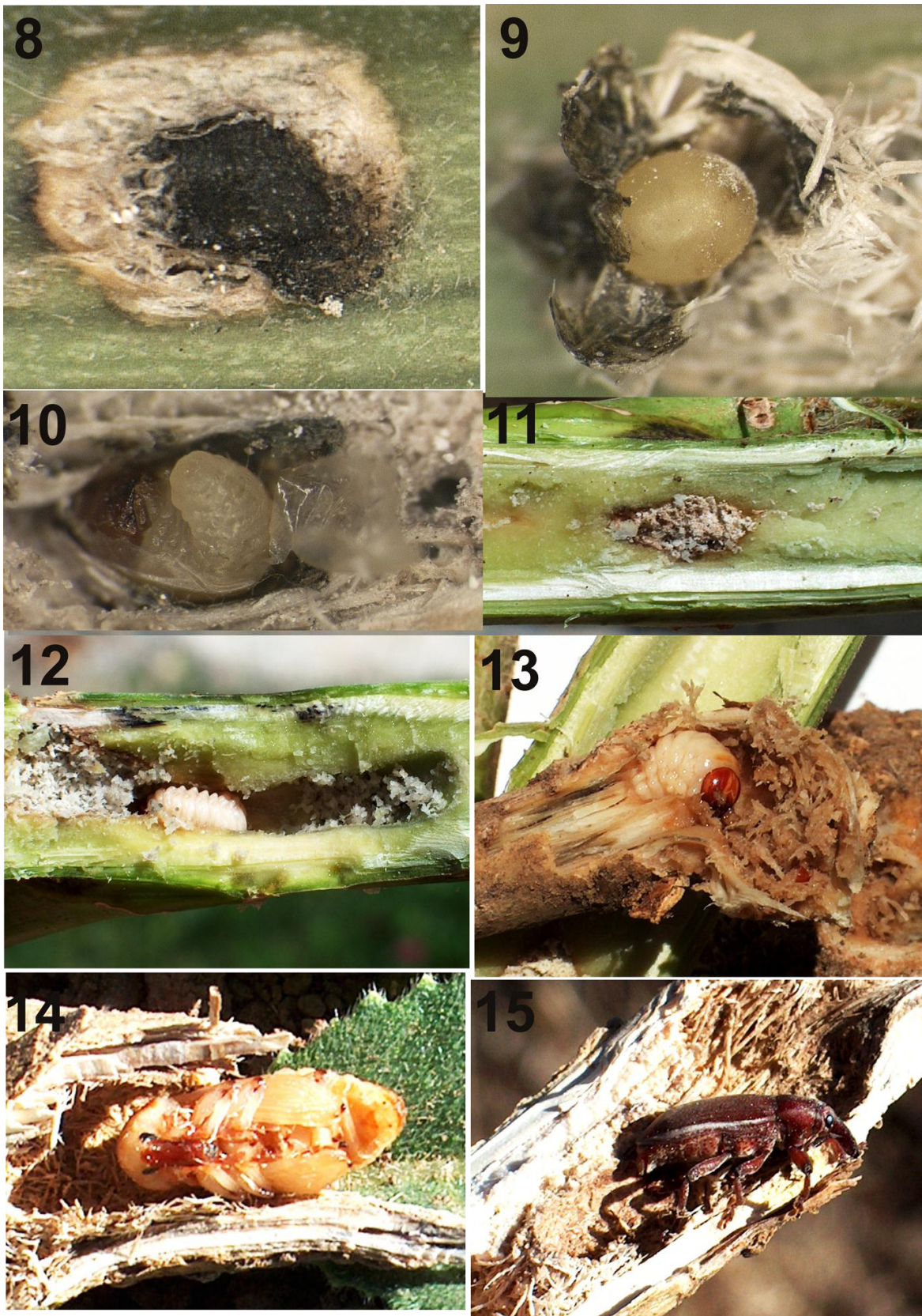


Figs. 1-7. Host plants, *Lixus circumcinctus* Boheman adults and their feeding damage. (1-2) *Crambe orientalis*; (3-4) *Crambe tataria*; (5) adult feeding on lateral branch of *C. orientalis*; (6) a mating pair; (7) feeding damage of adults on a stem of *C. tataria*.





Figs. 8-15. Niches of immature stages of the *Lixus circumcinctus* Boheman. (8) oviposition mark; (9) egg; (10) first stage larva emerging from egg; (11) frass from a larva feeding remnant in a gallery; (12) young larva tunneling in stem; (13) mature larva tunneled to the rootcrown; (14) pupa in the rootcrown; (15) new generation teneral adult in rootcrown.