

Fig. 1-6 *Caliothrips phaseoli*. 1, Forewing (10X); 2, Pronotum sculpture markings (40X); 3, Forewing second vein (40X); 4, Metathoracic endofurca (40X); 5, Sculpture on lateral thirds tergites (40X); 6, Tergite VIII shape (20X).

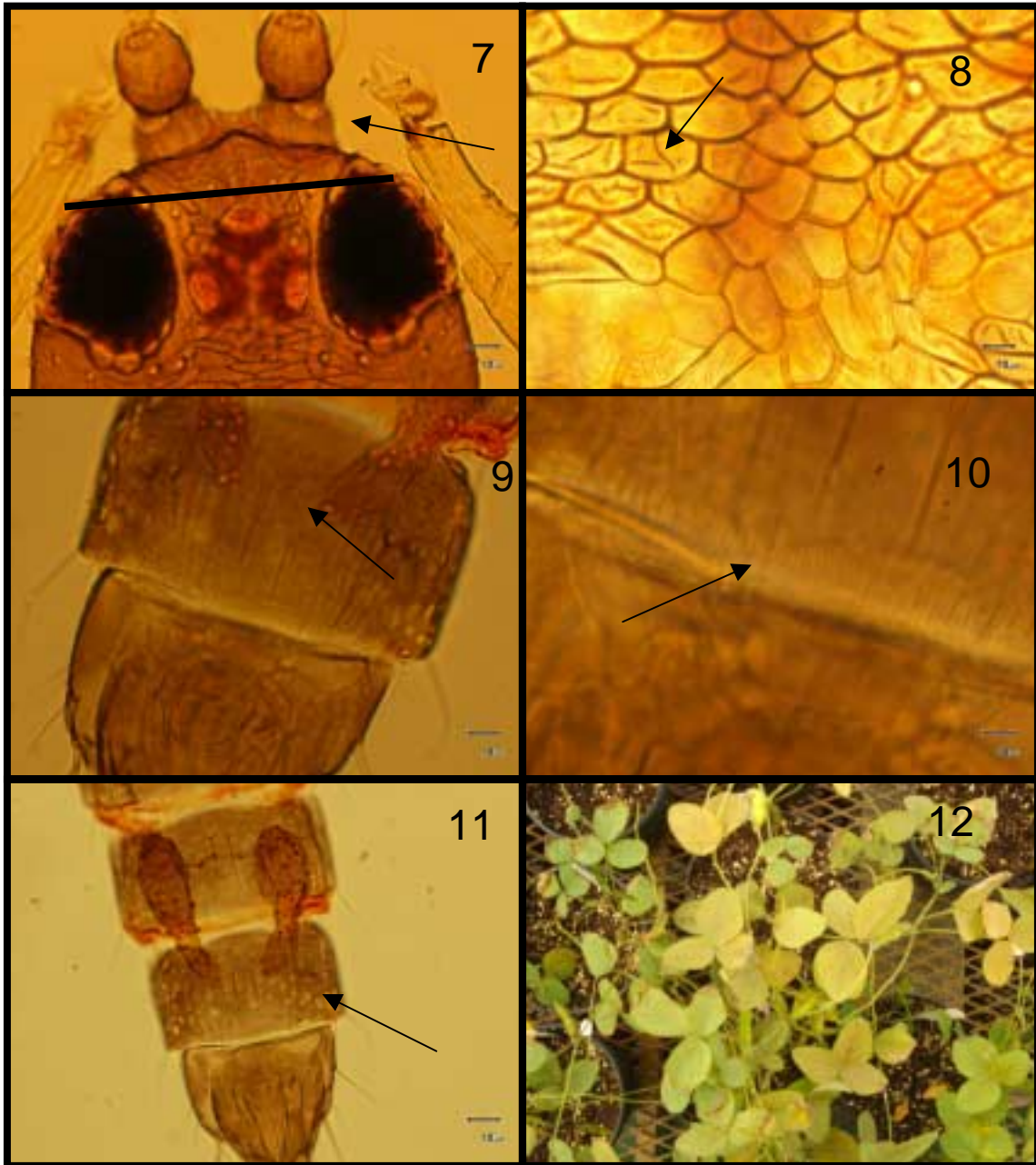


Fig. 7-12 *Echinothrips americanus*. 7, Head shape (40X); 8, Pronotum sculpture markings (40X); 9, Tergites long setae medially (40X); 10, Comb with slender microtrichia (100X); 11, Male circular glandular areas (20X); 12, Mechanical injury caused on soybean leaves.

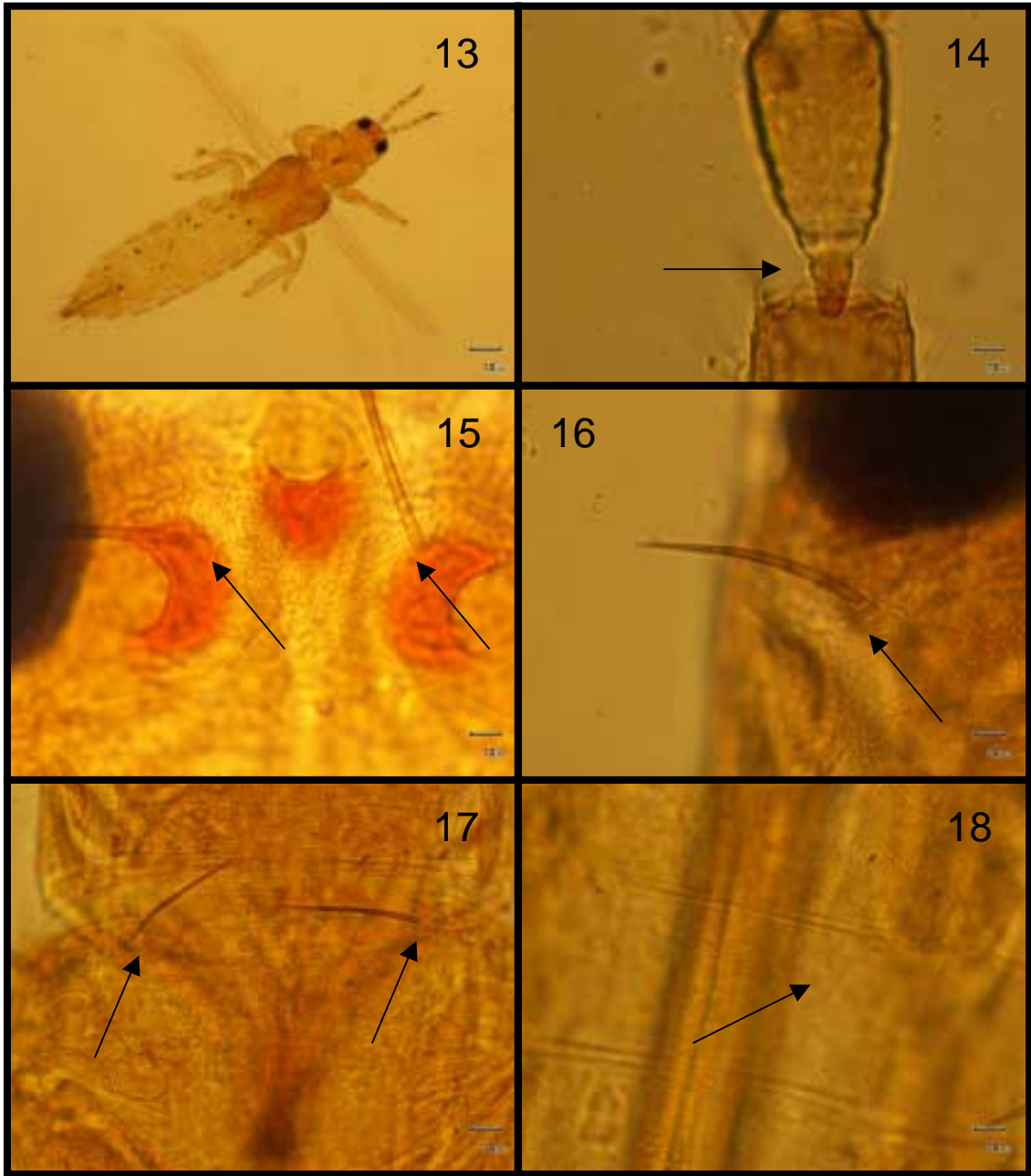


Fig. 13-18 *Frankliniella gossypiana*. 13, Female (10X); 14, Antennal segment III pedicel simple (40X); 15, Ocellar setae III position (40X); 16, Postocular setae IV (40X); 17, Pronotum anteromarginal setae; 18, Tergite VIII posteromarginal comb of microtrichia (100X).