

Genus *COLOBOPSIS* Mayr

*impressus* Roger. Alachua, Broward, Collier, Dade, De Soto, Flagler, Highlands, Hillsborough, Levy, Nassau, Palm Beach, Pinellas, Putnam, St. Johns, Sarasota.

APPENDIX

List of species excluded from or doubtfully included in our preliminary list:--

*Aphaenogaster carolinensis*, *A. miamiana*, *A. texana*; *Camponotus incensus*, *C. (Myrmentoma)* spp.; *Colobopsis pylartes*; *Brachymyrmex* spp.; *Conomyrma* spp.; *Crematogaster viride*; *Leptothorax elongata*; *Monomorium minimum*, *Paratrechina parvula* (early records); *Pheidole anastasioi*, *P. diversipilosus*, *P. greggi*, *P. pilifera*, *P. vinelandica*; *Solenopsis molesta*.

END NOTE

Contribution No. 690, Bureau of Entomology, Division of Plant Industry, Florida Department of Agriculture and Consumer Services, Gainesville, FL 32602.

REFERENCES CITED

- SMITH, D. R. 1979. Formicoidea. Pages 1323-1967 in "Catalog of Hymenoptera in America north of Mexico." Vol. 2. Smithsonian Institution, Washington, D. C.  
WHEELER, G. C., AND JEANETTE WHEELER. 1985. A simplified conspectus of the Formicidae. Trans. American Ent. Soc. 11: 255-264.

---

NEW *ARGYROTAENIA* AND *CHORISTONEURA* MOTHS FROM  
FLORIDA (LEPIDOPTERA: TORTRICIDAE)

JOHN B. HEPPNER

Florida State Collection of Arthropods  
Bureau of Entomology, DPI, FDACS  
P. O. Box 1269, Gainesville, FL 32602

ABSTRACT

Two new Tortricidae are described from Florida, USA: *Argyrotaenia hodgesi* n. sp. and *Choristoneura argentifasciata* n. sp.

RESUMEN

Se describen dos Tortricidas nuevas de la Florida, E.U.A.: *Argyrotaenia hodgesi* n. sp. y *Choristoneura argentifasciata* n. sp.

---

Among the numerous new species of moths known for Florida, two species of Tortricidae, one in the genus *Argyrotaenia* and one in *Choristoneura*, are described herein to make these names available for a revision of Kimball's (1965) catalog.

*ARGYROTAENIA HODGESI* Heppner n. sp.

(Fig. 1-6)

*Forewing length*: 4.5-5.4mm (male), 6.2-6.4mm (female).

*Head*: orange-brown; frons buff; labial palpus orange-brown; antenna orange-brown.

*Thorax*: orange-brown; tegula orange-brown; legs buff with some orange-brown and dark brown rings on tarsal segments of fore-legs, other legs buff to light golden-buff.

*Forewing*: buff with three irregular fascia of orange-brown, a large basal patch, one median constricted in the middle and widened and somewhat angled to tornus, and one preapical curved to termen and sometimes with a fine line continued to tornus; with all fascia having a fine border of dark brown; apex also with a small orange-brown area; fringe buff; venter lustrous buff with some brown suffusion.

*Hindwing*: pale gray-brown merging to light buff near apex; fringe light buff; venter pale lustrous buff.

*Abdomen*: golden buff; venter same.

*Male Genitalia*: uncus spatulate, almost as long as tegumen height, relatively uniform in width with a blunt apex; gnathos a pair of strong recurved arms coming to a sharp pointed apex; tegumen longer than wide, subequal to length of valva; vinculum short, rounded (U-shaped) and without distinct saccus; transtilla a thin band (ventral margin curved dorsally); annelus a subtriangular plate with a central elevated Y-shaped sclerotization; valva rounded, somewhat longer than wide, with sacculus a small point on a basal plate extended distally along the ventral valval margin; aedeagus with 3 elongated cornuti and ventrally directed phallobase.

*Female Genitalia*: papillae anales setose and wide, flat lobes; apophyses nearly subequal, with anterior pair thicker and somewhat longer; ostium bursae a rounded area demarcated by a sclerotized border fused laterally with the anterior apophyses; antrum a small round opening; ductus bursae short (slightly longer than size of corpus bursae), with small sclerotized colliculum; ductus seminalis attached at posterior quarter of ductus bursae near antrum; corpus bursae ovate, with a large dagger-shaped signum with capitulum.

*Holotype*.—Male: Fisheating Cr., Palmdale, Glades Co., Florida, 7-10-V-1964, R. W. Hodges (USNM).

*Paratypes*.—(7 m, 8 f). FLORIDA.—Collier Co.: Fakahatchee Strand (near Copeland), 28-III-1986 (1 m), H. D. Baggett (HDB). Glades Co.: Fisheating Cr., Palmdale, 7-10-V-

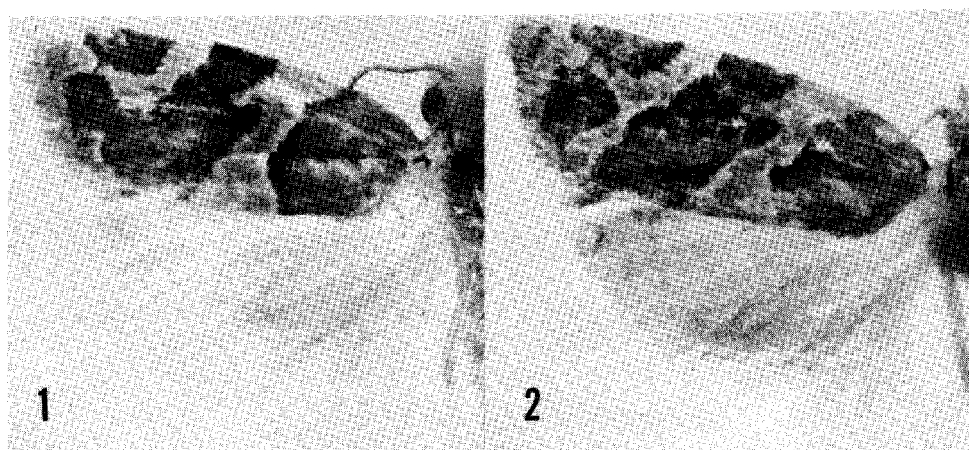


Fig. 1-2. *Argyrotaenia hodgesi* Heppner, n. sp., paratypes, Fisheating Creek, Glades Co., Florida (USNM): 1, male; 2, female.

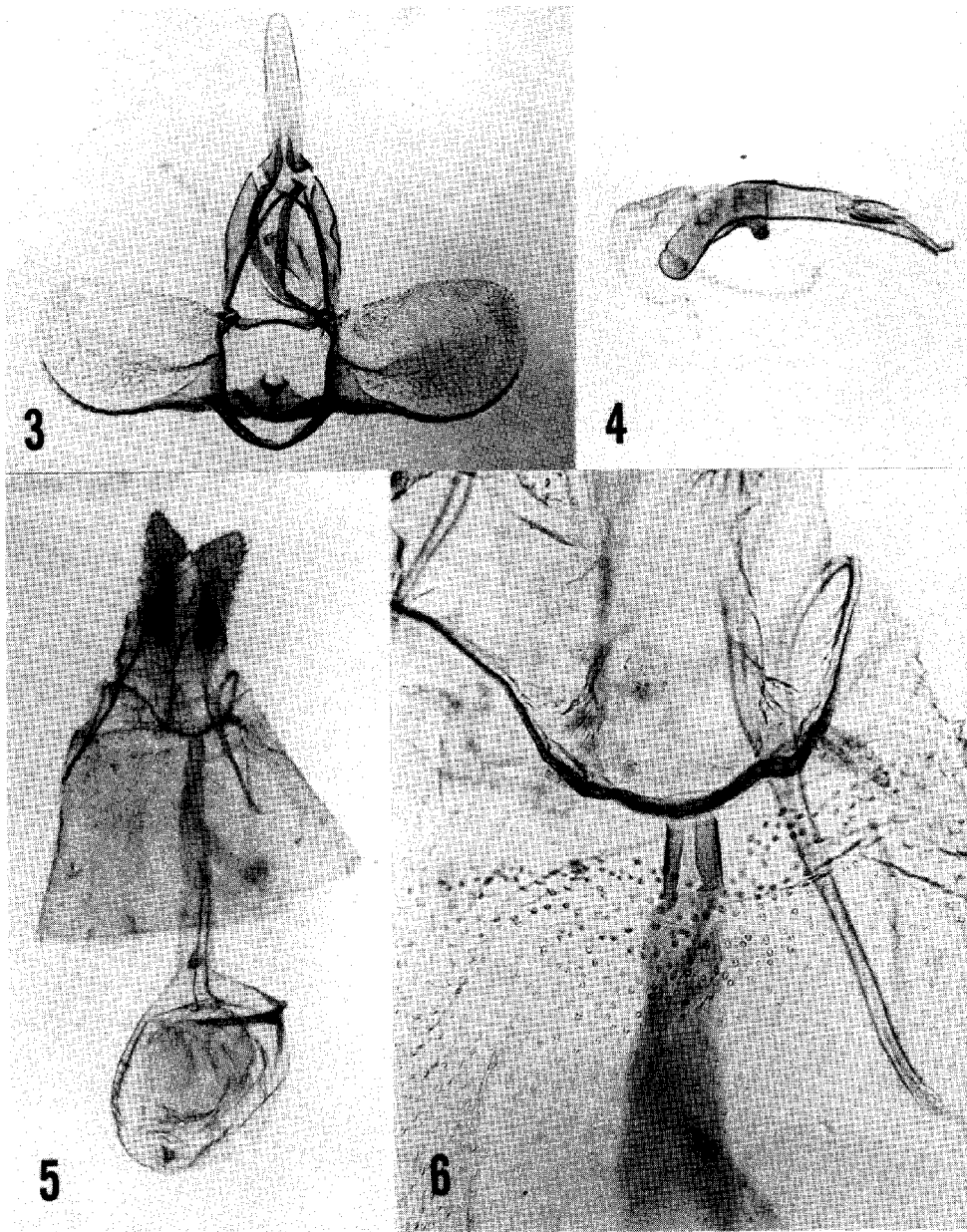


Fig. 3-6. *Argyrotaenia hodgesi* Heppner, n. sp., Fisheating Creek, Glades Co., Florida (USNM): 3, holotype male genitalia (JBH 1681); 4, same, aedeagus; 5, paratype female genitalia (JBH 1711); 6, same, detail of ostium and sterigma.

1964 (5m, 2f), R. W. Hodges (USNM). Liberty Co.: Torreya St. Pk., 12-IV-1980 (1f), H. D. Baggett (HDB). Orange Co.: Moss Park (near Lake Hart), 4-I-1986 (2f), L. C. Dow (LCD). Volusia Co.: Blue Springs State Pk., II-1985 (1m, 3f), 15-XII-1984, L. C. Dow (LCD). Paratypes to FSCA, USNM, and private collections noted.

*Distribution*.—This species is known from west Florida south to the Everglades.

*Flight period*.—Jan.-Mar., May, Dec.

*Hosts*.—Unknown.

*Remarks.*—This species superficially resembles *Argyrotaenia ivana* (Fernald) and *Argyrotaenia floridana* Obrastzov. It is morphologically close to *Argyrotaenia montezumae* (Walsingham); this Mexican and south Texan species has never been reported from Florida. The new species is named in honor of Dr. Ronald W. Hodges, USDA, U.S. National Museum of Natural History, Washington, D.C. (MONA checklist No. 3598.1).

*CHORISTONEURA ARGENTIFASCIATA* Heppner, n. sp.

(Fig. 7-11)

*Forewing length:* 6.0-7.0mm (male), 7.4-8.2mm (female).

*Head:* vertex and frons buff with brown mixed; antenna buff; venter buff and brown.

*Thorax:* orange-brown, with buff on posterior area; tegula buff laterally and posteriorly; venter buff; legs mostly dark brown, becoming paler and then buff towards tarsal segments.

*Forewing:* orange overlaid with brown to dark brown scales as borders to silver-white markings (markings along the costal margin being the most white, others often with orange suffusion); two prominent silvery-white lines angled from costa towards tornus at 1/3 and 2/3 from wing base, and terminating near wing center; radius with prominent silvery-white line from wing base to 1/4 from wing base; vein A1 + 2 with a similar white line extended to near mid-wing, then interrupted to tornus; another line on cubitus from mid-wing to end of cell and along cubital fold from mid-wing to near tornus; apex with 4 silvery-white marks, the distal 3 extended, with the most distal of these forming the base of the fringe; fringe orange-buff; venter pale orange, with costal white marks of dorsum faintly repeated in buff instead of white, and white suffusion over anal field.

*Hindwing:* brown, with some orange near apex; fringe buff, with white along anal margin; venter lustrous buff.

*Abdomen:* buff, with some brown scales mixed in; venter somewhat lighter.

*Male Genitalia:* uncus large, spatulate, with rounded distal end more than twice width of narrow base, with total length subequal to tegumen length; gnathos a pair of strong recurved arms merging to a sharp point, with total length subequal to tegumen length; socius undeveloped; tegumen rounded (U-shaped), nearly as long as wide; vinculum short, rounded, with no distinct saccus; transtilla a thin band; anellus a flat plate, rounded basally, the angled somewhat to the aedeagal rounded notch; valva subrectangular with very quadrate angles, setose, with sacculus a basal sclerotized area merging

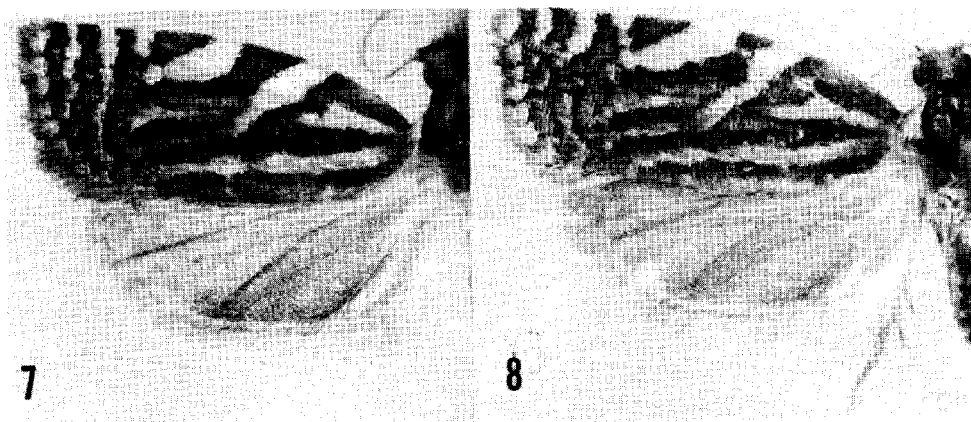


Fig. 7-8. *Choristoneura argentifasciata* Heppner, n. sp., Fisheating Creek, Glades Co., Florida (USNM); paratypes: 7, males; 8, female.

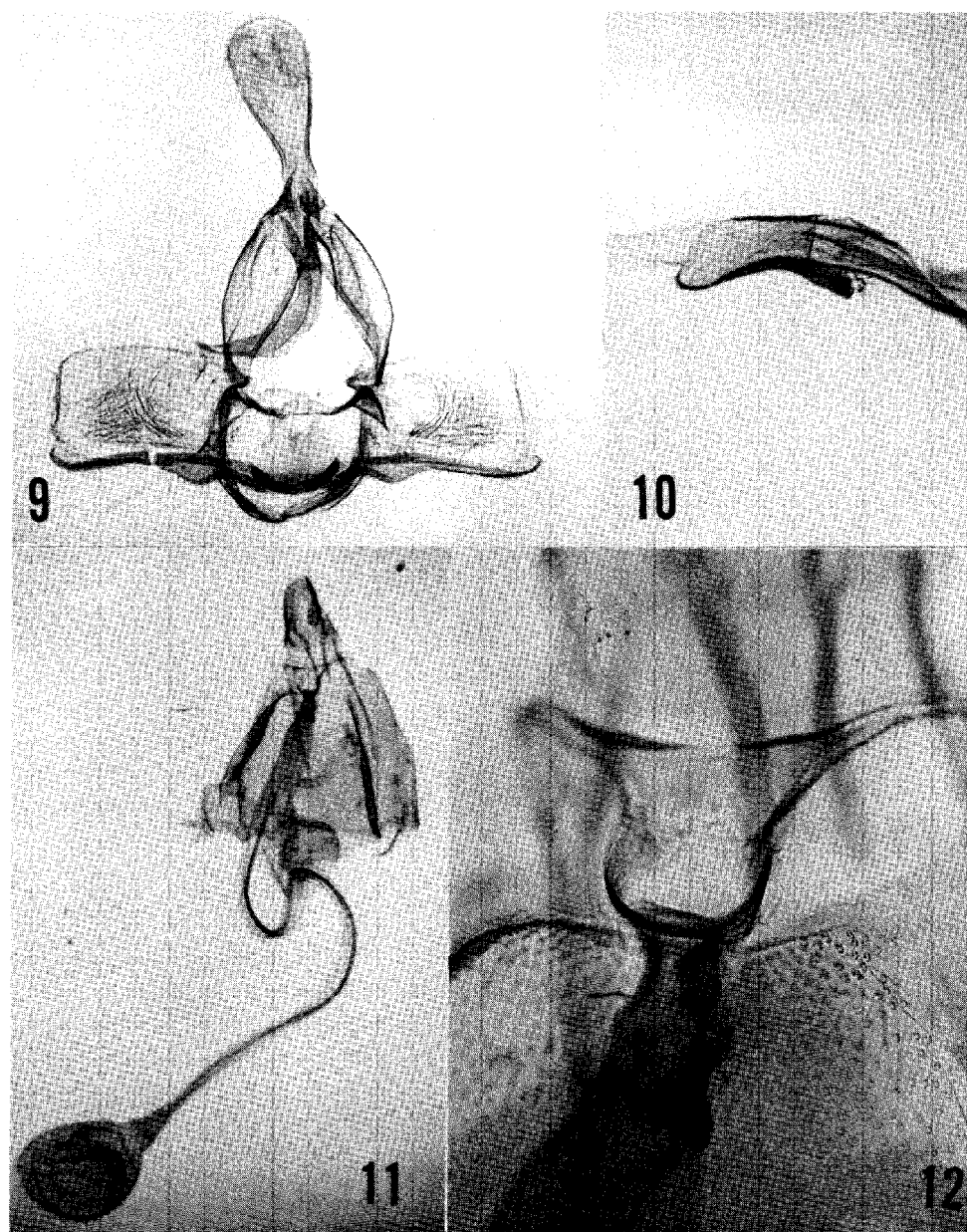


Fig. 9-12. *Choristoneura argentifasciata* Heppner, n. sp., Fisheating Creek, Glades Co., Florida (USNM): 9, holotype male genitalia (JBH 1679); 10, same, aedeagus; 11, paratype female genitalia (JBH 1680); 12, same, detail of ostium and sterigma.

with strong valval ventral margin; aedeagus slightly bent, with short phallobase; cornuti as 3 long spines.

*Female Genitalia:* ovipositor short, with small setose papillae anales; apophyses with anterior pair stronger and about 3 times the length of posterior pair; ostium bursae a rounded cup merging posteriorly with broad sterigma plate; antrum a small opening near the short sclerotized colliculum; ductus bursae very long and thin, somewhat convoluted, with total length about 6 times corpus bursae length; ductus seminalis attached

near to posterior end of ductus bursae; corpus bursae a small oval, with a large dagger-shaped signum with capitulum.

*Holotype*.—Male: Fisheating Cr., Palmdale, Glades Co., Florida, 7-10-V-1964, R. W. Hodges (USNM).

*Paratypes*.—(43 m, 16 f). FLORIDA.—Alachua Co.: Gainesville, 14-VI-1961 (1 m), H. A. Denmark (FSCA); Collier Co.: Copeland, 7-VI-88 (1 m), T. M. Neal (TMN); Fakahatchee Strand (near Copeland), 28-III-1986 (1 m), 29-IV-1986 (3 m, 2 f), L. C. Dow (LCD). Dade Co.: Homestead, 28-III-1986 (1 f), 28-IV-1986 (1 f), T. S. Dickel (TSD). Glades Co.: Fisheating Cr., Palmdale, 4-V-1974 (3 m, 2 f), J. B. Heppner (JBH); 7-10-V-1964 (26 m, 8 f), R. W. Hodges (USNM). Hernando Co.: Richloam Wildlife Mgt. Area, 26-IV-1986 (3 m), 21-V-1986 (1 f), L. C. Dow (LCD); Weeki Wachee Springs, 21-V-1960 (1 m), J. F. May (UCB). Hillsborough Co.: Tampa, 28-IV-1984 (1 m), H. D. Baggett (HDB); Tampa (USF Nat. Res.), 12-VII-1983 (2 m), H. D. Baggett (HDB). Levy Co.: Cedar Key, 27-VI-87 (1 m), T. M. Neal (TMN). Orange Co.: Winter Park (19-VIII-1973) (1 f), H. T. Fernald (FSCA). Paratypes to FSCA, UCB, USNM, and private collections noted.

*Distribution*.—Northern Florida south to the Everglades.

*Flight Period*.—Mar.-Aug.

*Hosts*.—Unknown.

REMARKS: This species is one of the most spectacular Florida tortricids and one of the most colorful of the genus. The male does not have any evident socii on the uncus, but the female genitalia are typical for *Choristoneura*. Relationships to other *Choristoneura* are unclear and only the genitalia point to some relationship to *Choristoneura rosaceana* (Harris), although the wing pattern is considerably different between the two species. The species resembles some conifer-feeding tortricids and many of the specimens have been collected in or near cypress swamps, thus *Taxodium* should be investigated as a possible host of the new species. (MONA checklist No. 3635.1).

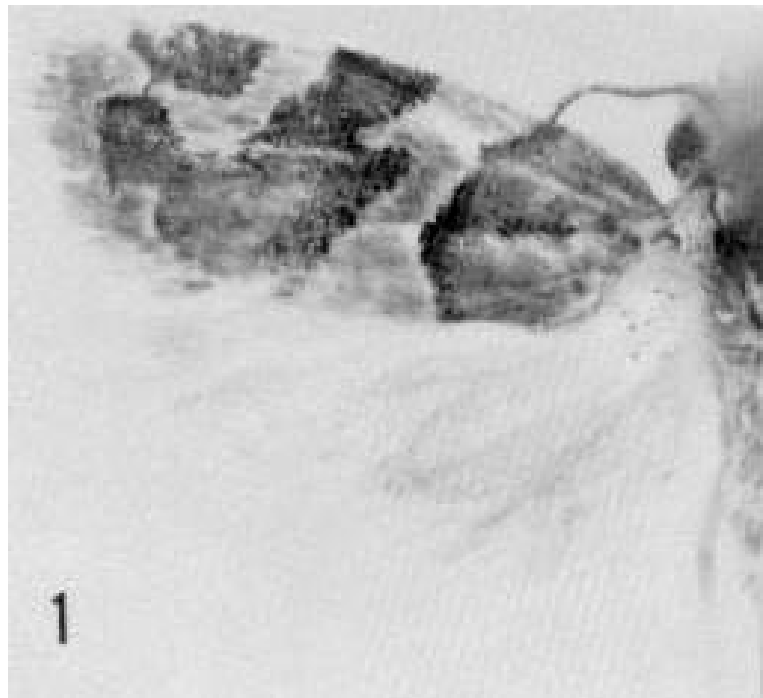
#### ACKNOWLEDGMENTS

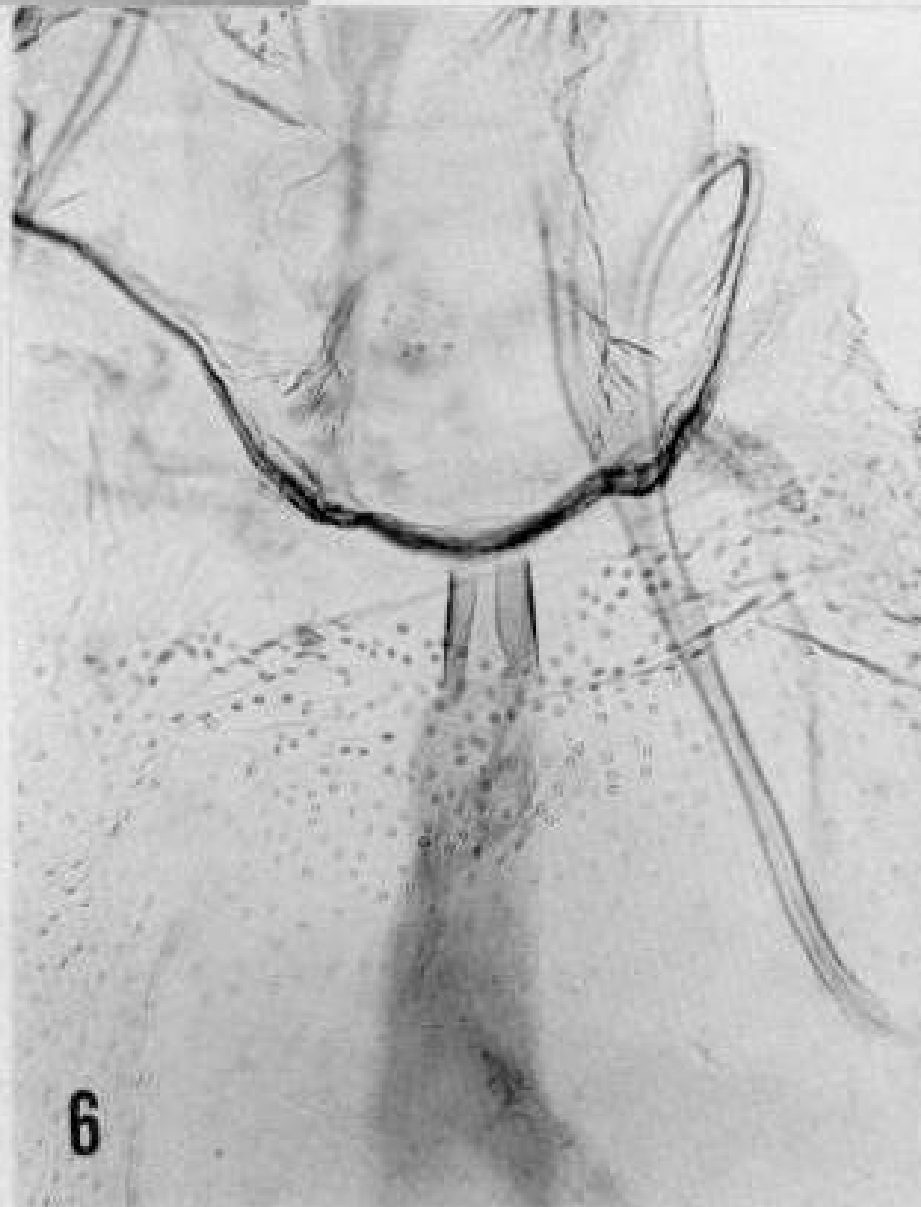
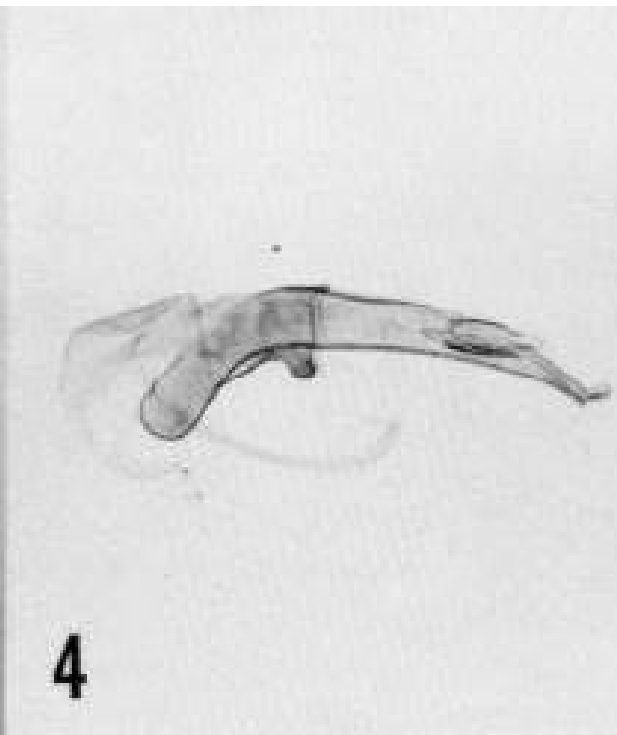
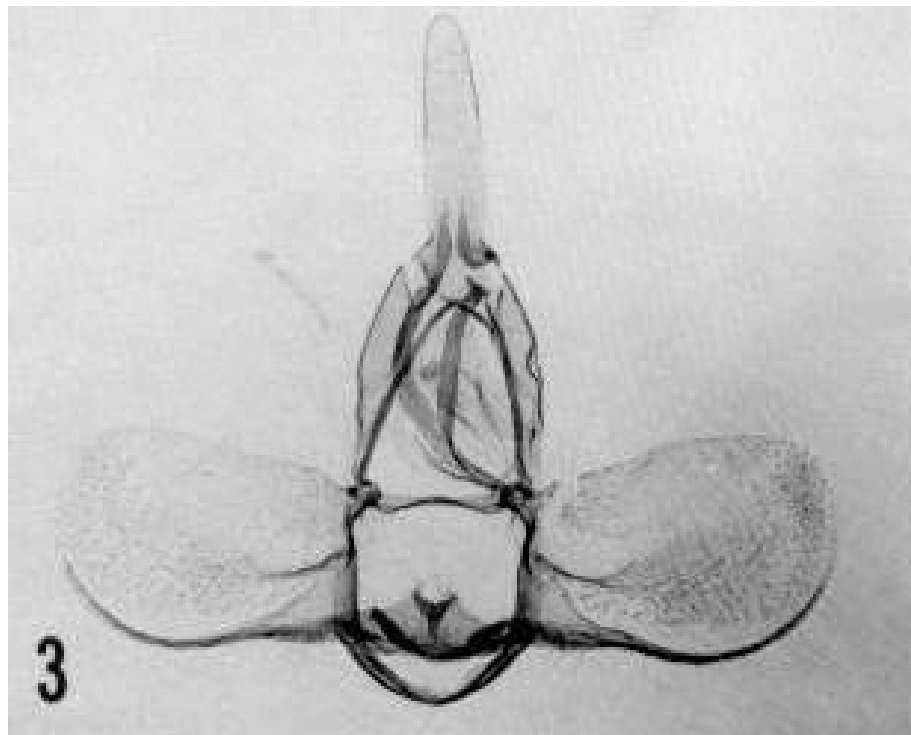
Appreciation is extended for the loan of specimens from museums and private collections, and their respective curators: Dr. Ronald W. Hodges, USDA, SEL, and Dr. Don R. Davis, Smithsonian Institution, U.S. National Museum of Natural History (USNM); Dr. Jerry A. Powell, University of California, Essig Museum of Entomology, Berkeley, California (UCB); Florida State Collection of Arthropods, Gainesville, Florida (FSCA); H. Dave Baggett, Gainesville, Florida (HDB); T. S. Dickle, Homestead, Florida (TSD); L. C. Dow, Largo, Florida (LCD), Thomas M. Neal, Gainesville, Florida (TMN); and my private collection (JBH). Reviewer comments are gratefully acknowledged. Photographs were made by Victor Krantz, Smithsonian Institution, and processed by the USNM Photographic Laboratory staff.

Contribution No. 673, Bureau of Entomology, Florida Department of Agriculture and Consumer Services, Gainesville.

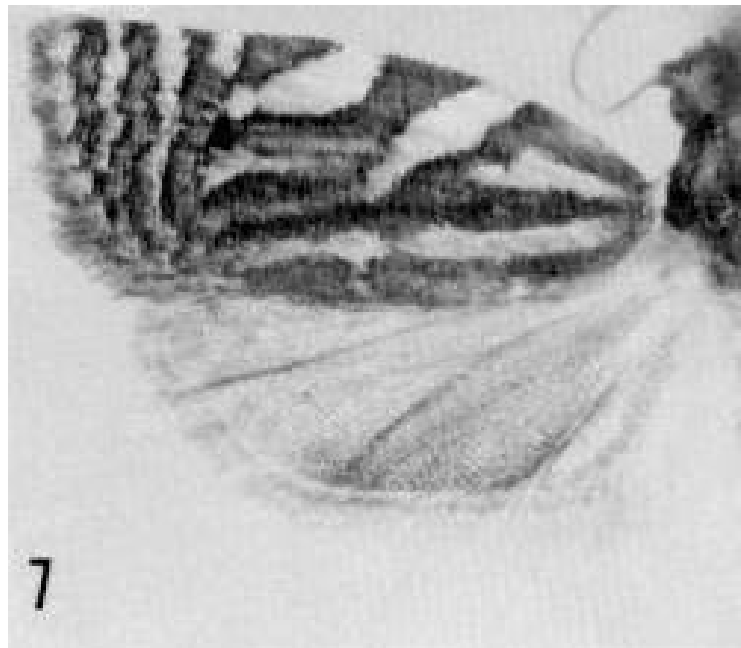
#### REFERENCES CITED

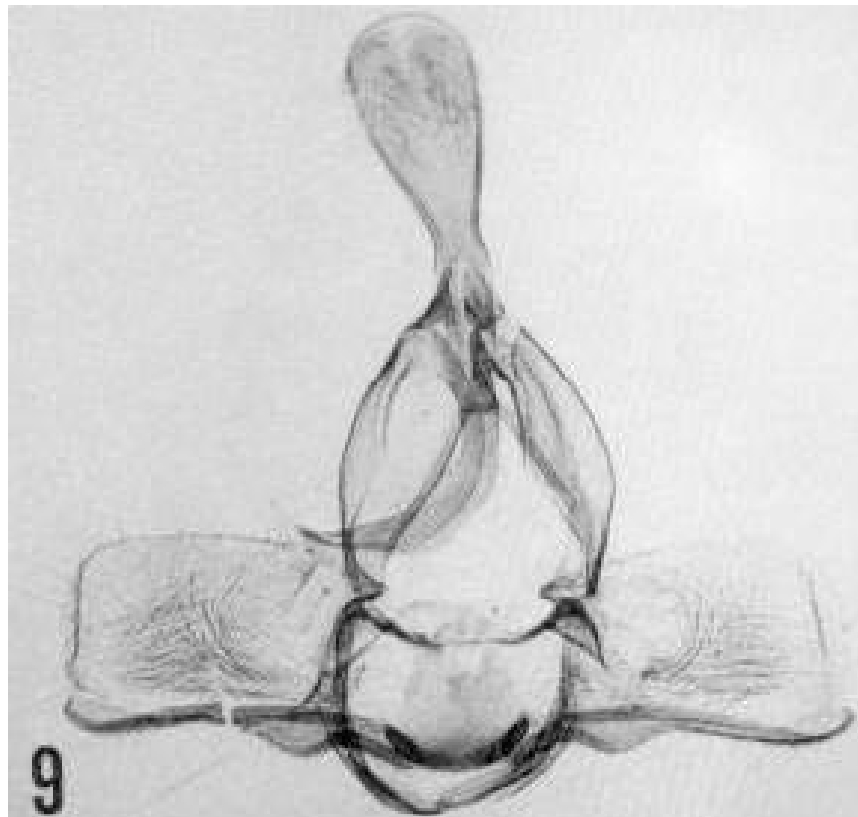
- KIMBALL, C. P. 1965. The Lepidoptera of Florida, an annotated checklist. Arthropods Fla. Neighbor. Land Areas (Fla. Dept. Agric., Gainesville), 1: 1-363, 26 pl.



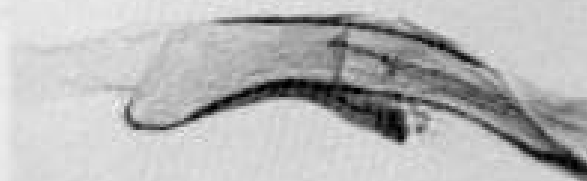








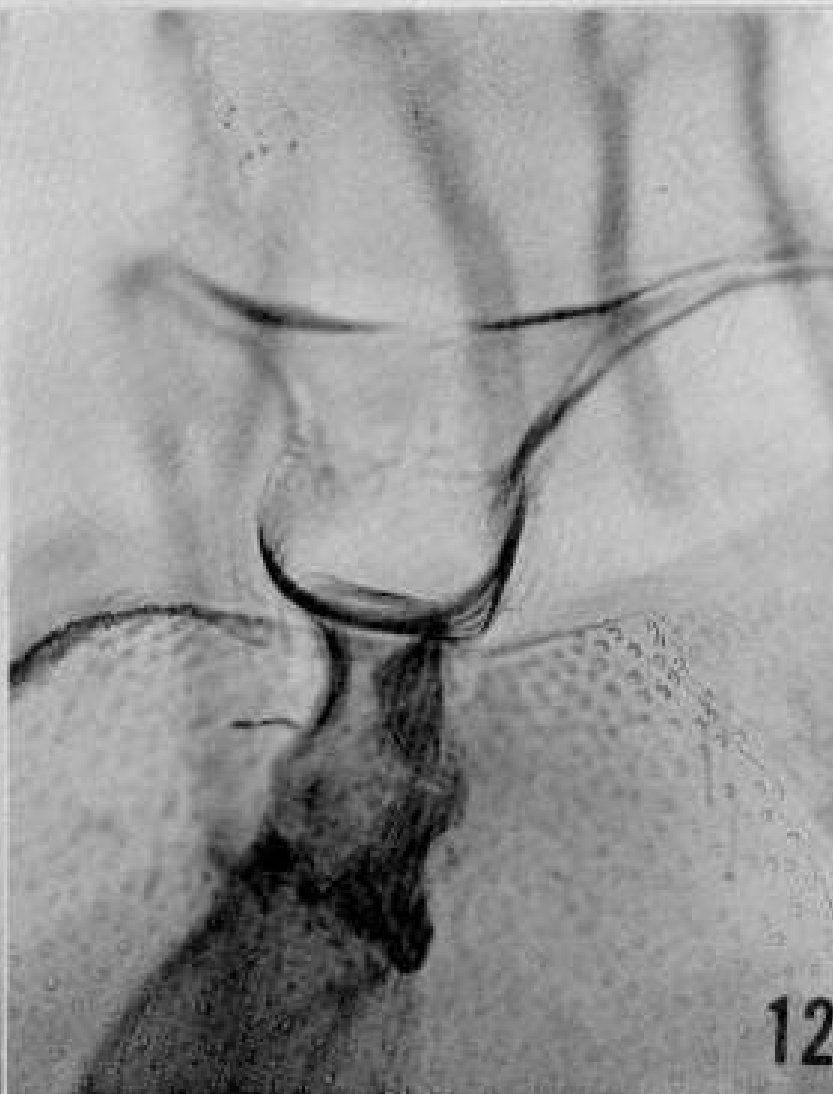
9



10



11



12