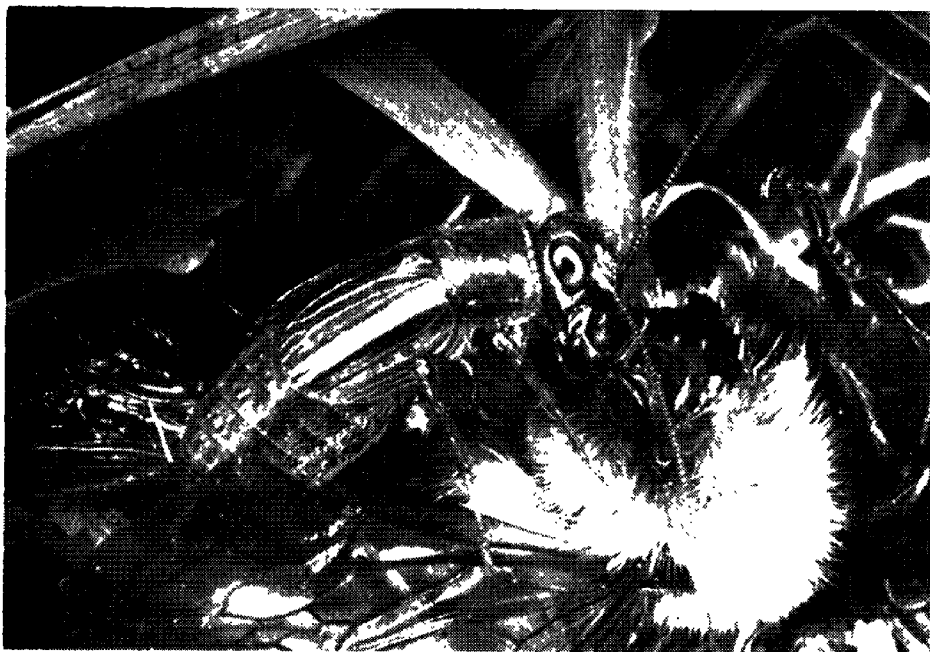


PHOTO STORY

A scavenging female cricket (*Allonemobius fasciatus* ?) eating a dead drone bumble bee (*Bombus fervidus*) on an upstate New York lawn, September 1980. He probably wore himself out competing for mates at the nest that was a few meters away. When the cricket dashed away from the photographer an ant took her place feeding—hyenas and jackals at a mini scale. (JEL). (bee identification by L. A. Stange)



“If the last 10 percent of your planned research time has brought excellent results, you are doubtless on a productive new track and should extend the project. But if the last 25 percent of your scheduled time has brought greatly diminished results, this fact is a signal to wind up your research. It all depends, however, on your having established a productive plan for your research at the outset.”

(*Finding Facts Fast*, Alden Todd, 1979, 2nd Ed., Ten Speed Press, Berkeley, 123 p.)

