
P R I N T I N G

FOR ALL PURPOSES

Carefully Executed



Delivered on Time

PEPPER PRINTING COMPANY

GAINESVILLE

FLORIDA

Check these ORTHO Advantages:



- | | |
|---|---|
| 1. Expert practical advice by experienced <i>ORTHO</i> Fieldmen. | give complete technical data on local pest problems. Write to be placed on mailing list. |
| 2. Quick delivery and fresh material from local plants. | 5. <i>ORTHO</i> labels are guaranteed for ingredient contents. |
| 3. Finest research facilities assure latest information on new pest controls. | 6. Quality products from the control laboratories working 'round the clock to assure accuracy of ingredients. |
| 4. <i>ORTHO</i> Field News Letters | |



CALIFORNIA SPRAY-CHEMICAL CORP.

P. O. Box 1231, Orlando, Florida

World leader in scientific pest control



Teammates *in* Agriculture

Wilson & Toomer Fertilizer Company has been working hand in hand with Florida agriculture for 62 years. Its pesticide division — Florida Agricultural Supply Company, has been helping Florida farmers and growers lick their pest problems for 33 years.

They are developers and manufacturers of such famous products as FLY FLAKES, simplest fly-killer in history, and of GRO-TONE, a super plant food for lawns and shrubs, plus hundreds of other agricultural items.

Experience and quality production are vitally important factors in the fertilizer and pesticide industries. You can *depend* on Wilson & Toomer and its division FASCO.



**WILSON & TOOMER
FERTILIZER COMPANY**

Plants in Jacksonville, Tampa, Cottondale, Port Everglades
GENERAL OFFICES • JACKSONVILLE, FLORIDA

**FLORIDA
AGRICULTURAL
SUPPLY CO.**



P E S T I C I D E S

FOR

FLORIDA TRUCK CROPS

●

The Kilgore Seed Company, manufacturers and formulators of Insecticides and Fungicides, offers a complete advisory service to Florida Farmers through the facilities of its 14 Stores, Laboratory and technically trained Field Staff.

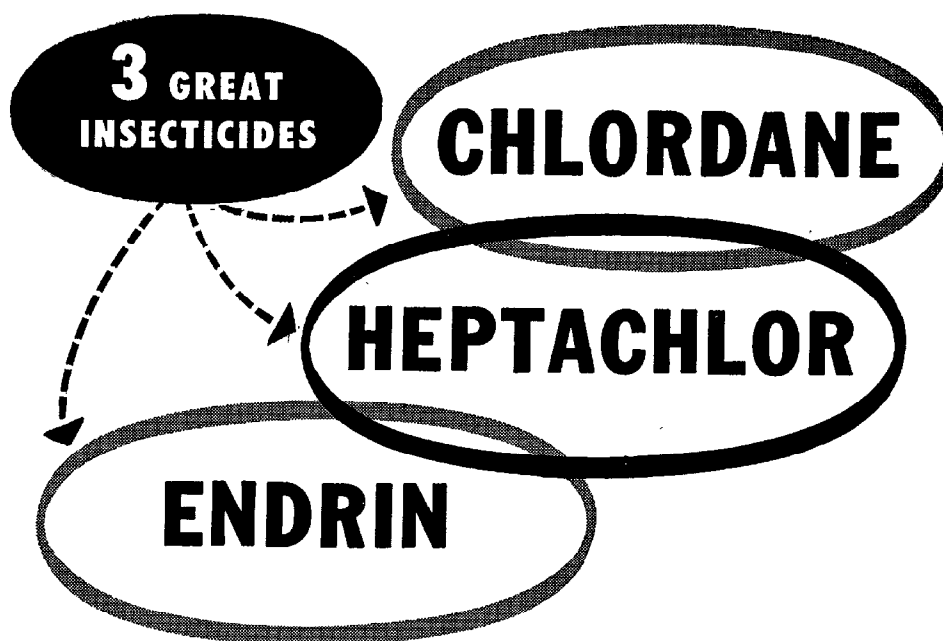
●

THE KILGORE SEED COMPANY

GENERAL OFFICES: PLANT CITY, FLORIDA
LABORATORY: WEST PALM BEACH, FLORIDA

●

Stores located at
**BELLE GLADE, FT. MYERS, GAINESVILLE, HOMESTEAD,
MIAMI, OCALA, PAHOKEE, PALMETTO, PLANT CITY,
POMPANO, SANFORD, VERO BEACH, WAUCHULA,
WEST PALM BEACH**



CONTROL THESE INSECTS

CHLORDANE: Ants, Armyworms, Blister Beetles, Boxelder Bug, Brown Dog Tick, Cabbage Maggot, Carpet Beetles, Cattle Lice, Chiggers, Cockroaches, Crickets, Cutworms, Darkling Beetles, Dog Mange, Earwigs, Fleas, Flies, Grasshoppers, Household Spiders, Japanese Beetle Larvae, Lawn Moths, Lygus Bugs, Mole Crickets, Mosquitoes, Onion Maggot, Onion Thrips, Plum Curculio, Sarcoptic Mange, Seed Corn Maggot, Sheep Ked, Silverfish, Sod Webworms, Southern Corn Rootworm, Strawberry Crown Borer, Strawberry Root Weevils, Sweet Clover Weevil, Tarnished Plant Bug, Termites, Ticks, Wasps, White Grubs, Wireworms...and many others.

HEPTACHLOR: Alfalfa Snout Beetle, Alfalfa Weevil, Ants, Argentine Ant, Armyworms, Asiatic Garden Beetle Larvae, Black Vine Weevil, Root Maggots, Clover Root Borer, Colorado Potato Beetle, Corn Rootworms, Cotton Boll Weevil, Cotton Fleahopper, Cotton Thrips, Crickets, Cutworms, Egyptian Alfalfa Weevil, European Chafer, Eye Gnats, False Wireworms, Flea Beetles, Garden Webworm, Grasshoppers, Japanese Beetle, Leaf Miners, Lygus Bugs, Mormon Cricket, Mosquitoes, Narcissus Bulb Fly, Onion Maggot, Onion Thrips, Rapid Plant Bug, Rice Leaf Miner, Salt Marsh Sand Fly, Seed Corn Maggot, Spittlebug, Strawberry Root Weevils, Strawberry Rootworms, Sugar Beet Root Maggot, Sweet Clover Weevil, Tarnished Plant Bug, Tuber Flea Beetle, Western Harvester Ant, White Fringed Beetles, White Grubs (June Beetles), Wireworms...and many others.

ENDRIN: Budworms, Cabbage Worms, Cotton Boll Weevil, Cotton Bollworm, Cotton Fleahopper, Fall Armyworm, Grasshoppers, Hornworms, Leafworms, Rapid Plant Bug, Spiny Bollworm, Sugar Beet Webworm, Tarnished Plant Bug, Thrips.

WRITE FOR FULL PARTICULARS

VELSICOL CHEMICAL CORPORATION



General Offices and Laboratories

330 East Grand Avenue, Chicago 11, Illinois

Foreign Division

350 Fifth Avenue, New York 1, N. Y.

REPRESENTATIVES IN PRINCIPAL CITIES

MALATHION

is
making
news!

In 1956, new uses for malathion will undoubtedly be added to the already impressive list of over 80 uses on 45 crops. Research work across the country shows highly promising results for malathion in new uses on fruits and vegetables . . . also in the control of

- mosquitoes
- household pests
- parasites on cattle, sheep, hogs, poultry and pets
- stored grain pests

For complete, up-to-date information write to the developers—



AMERICAN CYANAMID COMPANY

AGRICULTURAL CHEMICALS DIVISION
30 Rockefeller Plaza, New York 20, N. Y.

DEVELOPERS AND PRODUCERS OF MALATHION AND PARATHION TECHNICAL

Use **KELTHANE**
to kill mites on
shrubs, flowers, ornamentals

Under actual field conditions KELTHANE is the miticide to use for quick control of these mites:

European red Spruce	Two-spotted and many other species
------------------------	---------------------------------------

KELTHANE (tested experimentally as FW 293) has a good margin of safety on plants, buds, and flowers, and is non-hazardous to humans and animals when used according to directions. It is highly effective against resistant mites. KELTHANE does not spoil the appearance of your flowers because it leaves no visible residue.

It is offered as an emulsion concentrate with 18.5% active ingredient. KELTHANE mixes readily with water to give stable emulsions. Because of its long-lasting residual action, fewer applications are necessary. One application controls mites for several weeks. KELTHANE is compatible with the commonly used fungicides and insecticides.

Send the handy coupon below for further information on how to kill mites quickly and economically.

Rohm & Haas Company also manufactures: DITHANE fungicides to control many diseases of flowers and ornamentals; and KARATHANE WD, the safe fungicide that controls powdery mildew on flowers and ornamentals.

DITHANE and KARATHANE are trade-marks, Reg. U.S. Pat. Off. and in principal foreign countries.

KELTHANE is a trade-mark of the Rohm & Haas Company, Philadelphia 5, Pa.



Chemicals for Agriculture

**ROHM & HAAS
COMPANY**

WASHINGTON SQUARE, PHILADELPHIA 5, PA.

Representatives in principal foreign countries

ROHM & HAAS COMPANY

105 Washington Square, Philadelphia 5, Pa.

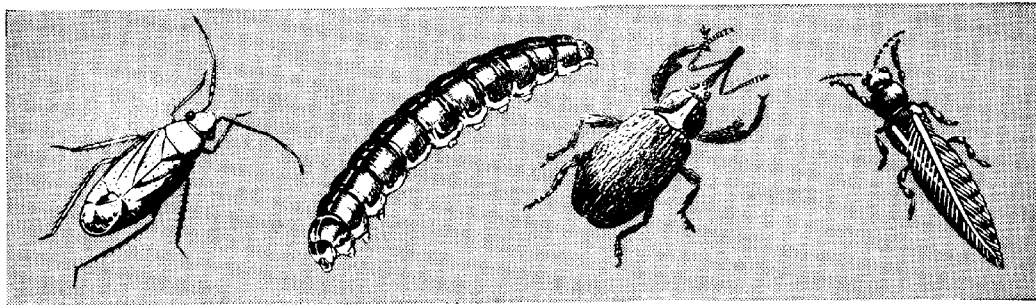
Please send more information about KELTHANE.

Name

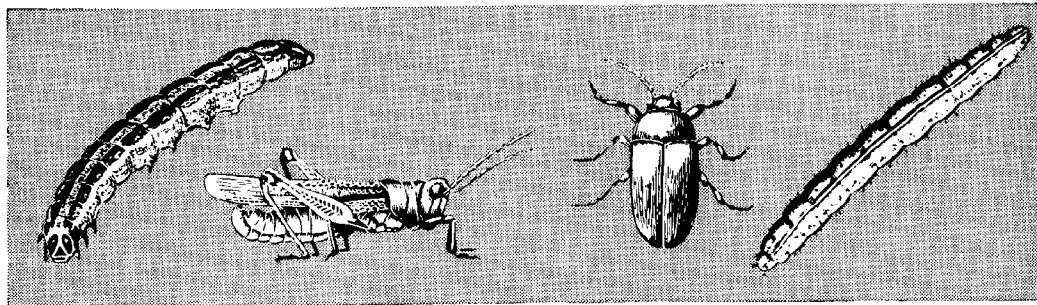
Street

Post Office State

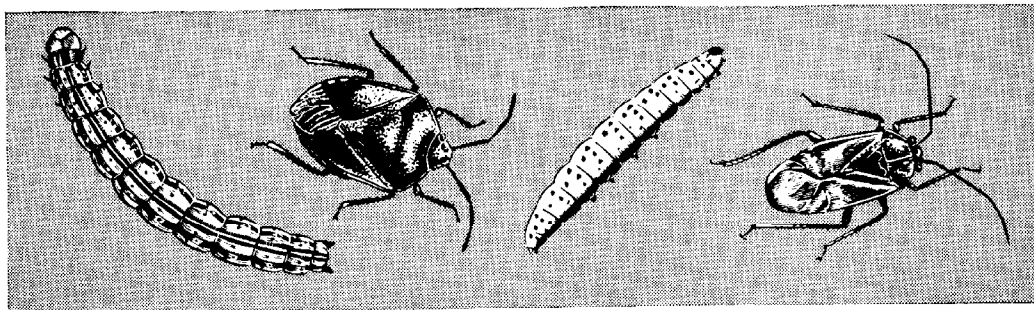
TOXAPHENE IS RECOMMENDED FOR



EFFECTIVE, ECONOMICAL CONTROL



OF MORE THAN 200 INSECT PESTS



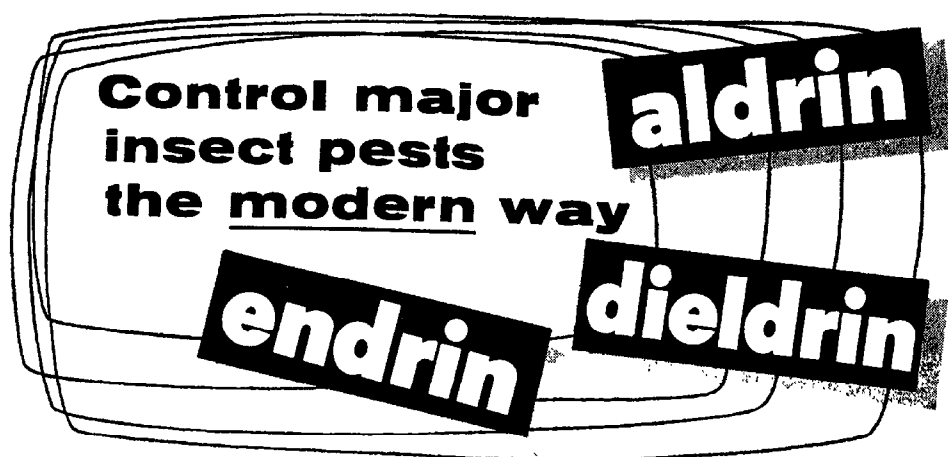
Agricultural Chemicals Division, Naval Stores Department

HERCULES POWDER COMPANY

INCORPORATED

949 King St., Wilmington 99, Del.

NX56-1



These three powerful Shell insecticides effectively control most major pests that attack important crops. At the present time, continuing experiments and research promise even wider uses. Here are some of the major crop pests successfully controlled by aldrin, dieltrin, and endrin.



Cotton—Aldrin, dieltrin, endrin control such major cotton pests as boll weevils, thrips, cutworms, fleahoppers, plant bugs. Endrin controls *both* boll weevils and bollworms. With aldrin and dieltrin, simply add DDT for bollworms.



Corn—Aldrin in the soil controls rootworms, wireworms, white grubs, seed corn maggots and other sub-surface pests — aldrin is also used extensively for soil insect control on many other crops.



Public Health Pests—Dieltrin stops mosquitoes, houseflies, fleas, ticks, chiggers, and others.



Tobacco—Endrin controls hornworms, budworms, grasshoppers, flea beetles, and cabbage worms.



Vegetables—Dieltrin controls: tuber flea beetle larvae, Colorado potato beetles, sweet potato weevils, onion thrips, cabbage maggots, loopers and many other insects attacking vegetables.



Fruit Pests—Dieltrin controls: plum curculio, lygus bugs and stink bugs.



Nursery and Garden Pests—Dieltrin controls such well-known garden destroyers as ants, white grubs, chinch bugs, earwigs, gladiolus thrips, and others.



Seed Treatment — Dieltrin controls: true and false wireworms, seed corn maggots and ants.

To help you get the most effective use of aldrin, dieltrin, and endrin formulations, Shell provides the finest in technical service . . . and field representatives who work with growers, county agents, and extension entomologists. Are you on the SCAN list? Every month Shell Chemical Corporation issues SCAN, a timely agricultural information bulletin. Send your name and address for your *free* monthly copy to:

SHELL CHEMICAL CORPORATION

AGRICULTURAL CHEMICALS DIVISION

460 Park Avenue, New York 22, New York

Atlanta • Houston • San Francisco • St. Louis • New Orleans



Naugatuck Agricultural Chemicals

product	application	advantages
Aramite miticide	controls mites on citrus and deciduous fruits, cotton, other row crops, ornamentals and vine crops. Also controls poultry mites.	non-hazardous, low cost per acre, highly compatible, harmless to natural predators.
Spergon® seed protectant	controls soil fungi and storage insects (with DDT) on most crop and vegetable seeds.	effective at economical dosages, safe on seed, easy to use, compatible with most other chemicals including legume inoculants, low cost.
Phygon®-XL fungicide	controls fungus diseases on fruit trees and row crops.	extremely low cost per acre, easy to apply, compatible, harmless to pollen and bees.
MH growth retardant and herbicide	inhibits grass growth: controls wild onions and quack grass; prevents tobacco suckering. Pre-harvest application prevents destructive storage sprouting of edible onions and potatoes.	extremely safe on plants; easy to apply: in wild onion control, one spray lasts up to 3 years.
Alanap® pre-emergence weed killer	pre-emergence weed-control for vine, row crops; asparagus and nursery stock. Available commercially for use on vine crops.	safe on recommended crops, relatively non-toxic, easy to apply, favorably priced.
Duraset®-20W flower and fruit-setting compound <small>*U. S. PAT. 2,556,665</small>	a fruit-setting chemical for lima beans, legumes, peppers and various tree fruits.	low dosage per acre, easily applied as a foliage spray.



United States Rubber

Naugatuck Chemical Division

Naugatuck, Connecticut