

CHLORDANE



CONTROLS THESE INSECTS

Ants	Mosquitoes
Armyworms	Onion Maggots
Blister Beetles	Onion Thrips
Boxelder Bugs	Plum Curculio
Brown Dog Ticks	Sarcoptic Mange
Cabbage Maggots	Seed-Corn Maggots
Cattle Lice	Serpentine Leaf
Chiggers	Miners
Chinch Bugs	Sheep Ked
Cockroaches	Silverfish
Cotton Boll Weevils	Sod Webworms
Crickets	Southern Corn
Cutworms	Rootworms
Earwigs	Strawberry Crown
Fleas	Borers
Flies	Strawberry Weevils
Grasshoppers	Sweet Clover
Household Spiders	Weevils
Japanese Beetle	Tarnished Plant
Larvae	Bugs
Lawn Moths	Termites
Lygus Bugs	Ticks
Mole Crickets	White Grubs
Mormon Crickets	Wireworms

*Write for Specific
Technical Bulletins*

AND MANY OTHERS

VELSICOL CORPORATION

General Offices and Laboratories
330 East Grand Avenue, Chicago 11, Illinois

Export Division
100 East 42nd Street, New York 17, New York

REPRESENTATIVES IN PRINCIPAL CITIES



For complete, accurate,
up-to-date information on

PARATHION

and

MALATHION

(also known as malathon)

direct your inquiries to the
developer of these important
broad-spectrum insecticides...

AMERICAN Cyanamid COMPANY

Manufacturer of *Thiophos*[®] Parathion Technical
and MALATHION Technical

AGRICULTURAL CHEMICALS DIVISION
30 Rockefeller Plaza, New York 20, N. Y.

P E S T I C I D E S

FOR

FLORIDA TRUCK CROPS



The Kilgore Seed Company, manufacturers and formulators of Insecticides and Fungicides, offers a complete advisory service to Florida Farmers through the facilities of its 14 Stores, Laboratory and technically trained Field Staff.

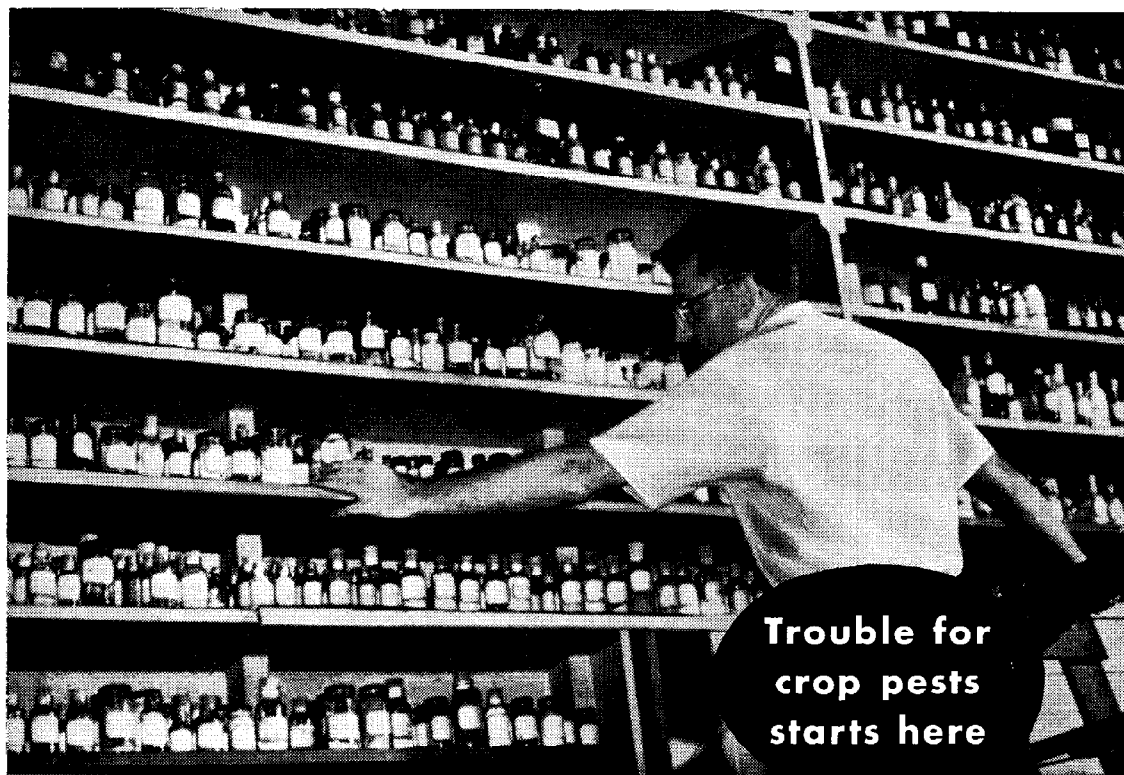


THE KILGORE SEED COMPANY

GENERAL OFFICES: PLANT CITY, FLORIDA
LABORATORY: WEST PALM BEACH, FLORIDA



Stores located at
BELLE GLADE, FT. MYERS, GAINESVILLE, HOMESTEAD,
MIAMI, OCALA, PAHOKEE, PALMETTO, PLANT CITY,
POMPAÑO, SANFORD, VERO BEACH, WAUCHULA,
WEST PALM BEACH



**Trouble for
crop pests
starts here**

Glance behind the agricultural research scene at Rohm & Haas and you would say: "The future is going to be rough on farm pests." And you would be right! Development of agricultural chemicals is hitting a faster pace than ever at the company's laboratories and experimental farms.

Hornworms and the red-banded leaf roller are kept under control by RHOTHANE; plant diseases are checked by DITHANE. Many pests on the farm must still be licked. But for every one, intensive research will ultimately spell control.



DITHANE Fungicides

DDT Insecticides

LETHANE—fast

knockdown agent
in household and
livestock sprays.

RHOTHANE
(DDD or TDE)
Insecticides

TRITON emulsifiers
are offered in a
wide selection for
the emulsification
of many organic
pesticides
used today.

WEED KILLERS

2,4-D and 2,4,5-T
herbicides

2,4-D acid

Butyl and Isopropyl
ester concentrates

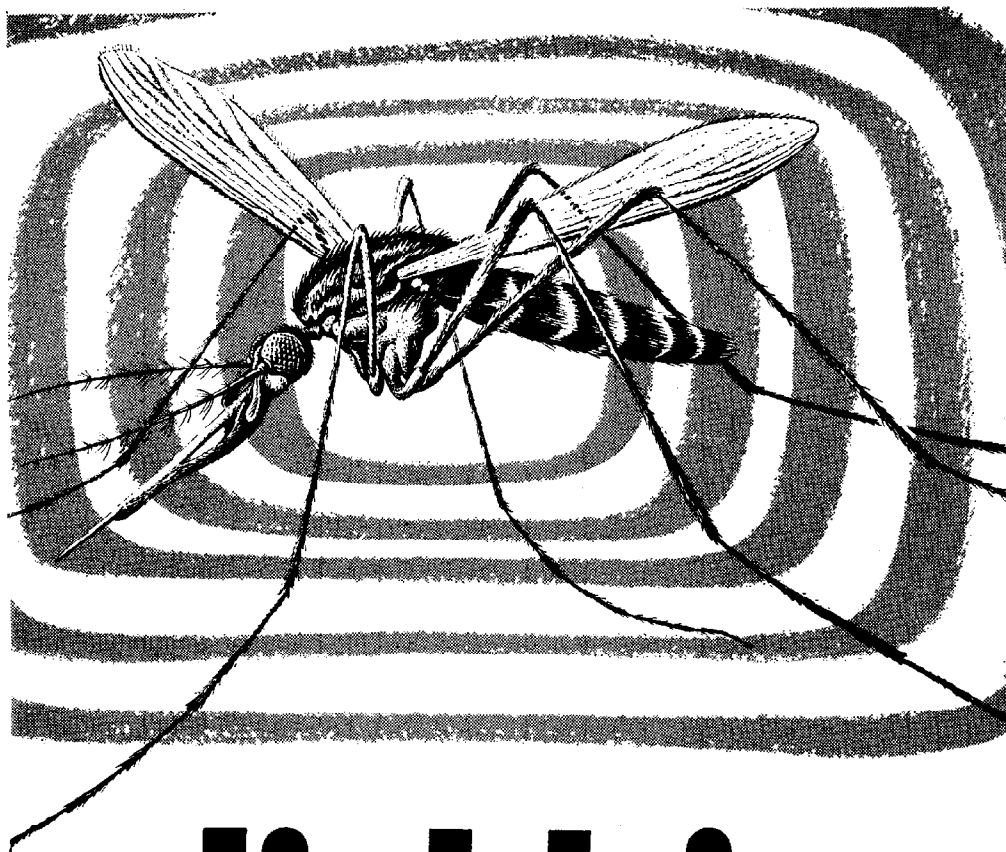
Capryl ester low
volatile formulations

Amine salt of 2,4-D

Ester formulations

Brush killer
formulations
containing capryl
esters of 2,4-D
and 2,4,5-T

*DITHANE, LETHANE, RHOTHANE and TRITON
are trademarks, Reg. U.S. Pat. Off. and in prin-
cipal foreign countries.*



dieldrin

vs the Mosquito

BRINGING dieldrin into action against the mosquito is a further contribution of science in overcoming one of humanity's age-old problems . . . malaria. World-wide use of this new insecticide is now lifting the once-appalling disease burden of the peoples of many nations.

Dieldrin applied to mosquito breeding places works wonders in halting larval development, and one application gives control for an entire season. Formulations of this insecticide can be applied by either air or ground equipment. The most recent development in mosquito con-

trol techniques is the broadcasting of dieldrin granules over breeding areas.

Adult mosquitoes, too, succumb to this insecticide. Dieldrin's long-lasting action makes it an ideal weapon against adults. Treated surfaces remain toxic to mosquitoes for many weeks.

Dieldrin, distributed by Shell Chemical Corporation, is effective against all economic species of the mosquito. Also, its versatility in controlling other troublesome insects, such as flies, ticks, chiggers and fleas, proves it tops in the public health field.

SHELL CHEMICAL CORPORATION

AGRICULTURAL CHEMICALS DIVISION

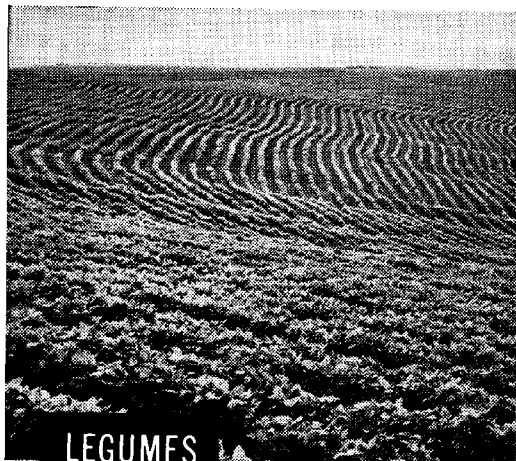
P. O. Box 1617, Denver 1, Colorado

Atlanta . . . Houston . . . New York . . . San Francisco . . . St. Louis
Jackson, Mississippi

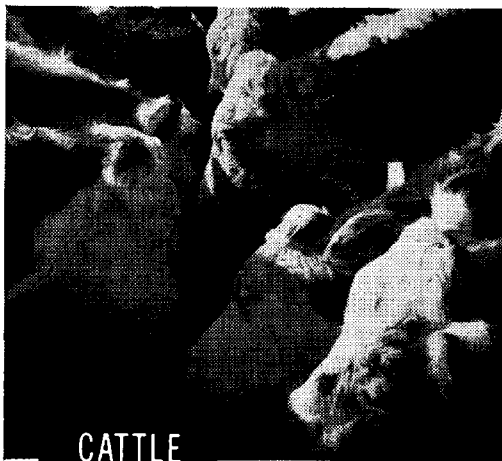


TOXAPHENE PROTECTS

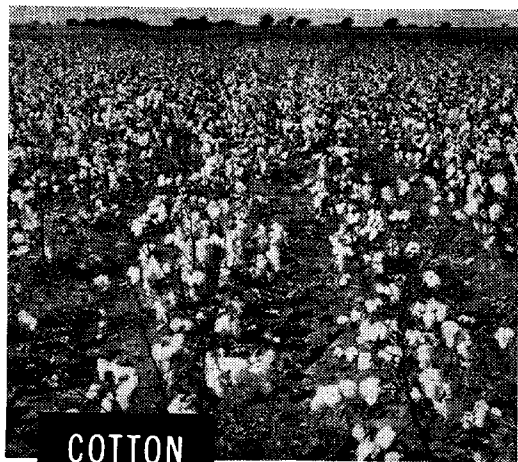
FOOD, FEED, AND FIBER CROPS



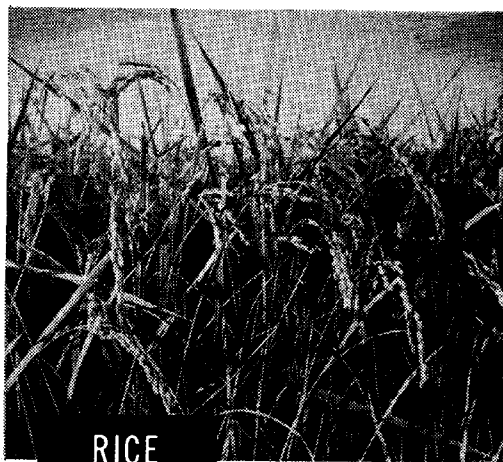
LEGUMES



CATTLE



COTTON



RICE

Wherever you live, it's probable that the crops grown there can benefit from insecticides based on toxaphene (chlorinated camphene 67-69% CI). Recommended for effective control of more than 150 different species of insect pests, toxaphene dusts and sprays are helping to protect food, feed and fiber crops—to increase yields throughout the world.



Naval Stores Department

HERCULES POWDER COMPANY

949 King St., Wilmington 99, Del.



Teammates *in* Agriculture



Wilson & Toomer Fertilizer Company has been working hand in hand with Florida agriculture for 62 years. Its pesticide division — Florida Agricultural Supply Company, has been helping Florida farmers and growers lick their pest problems for 33 years.

They are developers and manufacturers of such famous products as FLY FLAKES, simplest fly-killer in history, and of GRO-TONE, a super plant food for lawns and shrubs, plus hundreds of other agricultural items.

Experience and quality production are vitally important factors in the fertilizer and pesticide industries. You can *depend* on Wilson & Toomer and its division FASCO.



**WILSON & TOOMER
FERTILIZER COMPANY**

Plants in Jacksonville, Tampa, Cottondale, Port Everglades
GENERAL OFFICES • JACKSONVILLE, FLORIDA

**FLORIDA
AGRICULTURAL
SUPPLY CO.**



SPRAY or DUST

with Reliable, Dependable



Black Leaf 40 provides *multiple protection* against aphids, most thrips and similar sucking insects. Kills by contact and by fumes — versatile, economical, effective protection against crop losses.

Black Leaf 40 is *discriminating*. Controls aphids and other destructive pests — spares beneficial insects.

Black Leaf 40 is *compatible* with other standard spray and dust materials. Leaves no harmful residue.

Companion Products:

Black Leaf 3% Nicotine Dust
Black Leaf Nicotine-Rotenone-Sulphur Dust
Nico-Fume Pressure-Fumigators
Benzo-Fume Pressure-Fumigators
Nico-Fume Liquid

**TOBACCO BY-PRODUCTS & CHEMICAL
CORPORATION**

RICHMOND, VIRGINIA