

PROVEN ADJUVENTS

For Agricultural Dusts —
CP-5 DUST STICKER

For Agricultural Sprays —
COLLOIDAL Z-1



COLLOIDAL PRODUCTS CORPORATION

SAN FRANCISCO, 11, CALIFORNIA

Spreaders • Deposit Builders
Stickers for Agricultural Sprays and Dusts Since 1920

P R I N T I N G

FOR ALL PURPOSES

Carefully Executed



Delivered on Time

PEPPER PRINTING COMPANY

GAINESVILLE

-

-

-

-

-

-

-

-

-

-

FLORIDA



IN THE CITRUS GROVE

N-P Ready Mix
N-P 90 Emulsion
C-O Flowable Emulsion
VOLCK OILS

ALLTOX Wettable (Chlorinated
Camphone)

ORTHO Copper Fungicide "53"

CONTAX Weed Killer

All trade names reg. U. S. Pat. Off.

Florida citrus culture has long
been supported by **ORTHO**
Fungicides and Insecticides.

These **ORTHO** products pro-
vide full protection against
fungus and insect pests with
safety to fruit and foliage.

ORTHO Fieldmen render valuable assistance
in planning spray programs that help to
produce more profitable crops.

CALIFORNIA SPRAY-CHEMICAL CORPORATION

ORLANDO, FLORIDA

INSECTICIDES and FUNGICIDES

FOR FLORIDA TRUCK CROPS

KILCIDE (DDT)
KILCHLOR (Chlordane)
KILPHENE (Chlorinated Cam-
phene)
KILPHOS (Parathion)

KILHEX (Benzene Hexachloride)
KILGAM (Benzene Hexachloride--
essentially pure gamma isomer
base)
KILCOP (Basic or Neutral Copper
Compounds)

THE KILGORE SEED COMPANY

General Offices Plant City, Florida

Laboratory West Palm Beach, Florida

Stores located at

Belle Glade, Florida
Gainesville, Florida
Homestead, Florida
Miami, Florida
Pahokee, Florida
Palmetto, Florida
Ft. Myers, Florida

Plant City, Florida
Pompano, Florida
Sanford, Florida
Vero Beach, Florida
Wauchula, Florida
West Palm Beach, Florida
Ocala, Florida

SHERWIN-WILLIAMS

Agricultural Chemicals

Insecticides, Fungicides and Herbicides

APHAMITE (parathion)

Available in 15% and 25% wettable powders and in a ready to use 1% dust.

CHLORPHEEN (toxaphene)

Available in a 40% wettable powder and in a high quality 42% concentrated emulsion.

ZINC SULPHATE—Spray Dried

Tops in quality. 36% metallic content, active ingredient—monohydrated zinc sulphate 100%. Packaged in easy to handle 50 pound bags.

AGRICULTURAL WEED-NO-MORE

A 40% butyl ester of 2,4-D for control of broad-leaved weeds.

SHERWILKIL

A new product for the control of brush, containing 2,4-D and 2,4,5-T combined.

Many other products are available to fill your requirements.

Contact your nearest SHERWIN-WILLIAMS Dealer or

THE SHERWIN-WILLIAMS COMPANY

Agricultural Chemicals Division

221 12th Street

TAMPA, FLORIDA



REG. U. S. PAT. OFF.

AGRICULTURAL CHEMICALS

COPPER-A COMPOUND

A safer fungicide for copper-sensitive plants.

COTTON DUSTS

BHC, DDT and sulfur combined, or Toxaphene sulfur for all-in-one control of cotton insects.

DEENATE* DDT

Insecticide in five formulations.

FERMATE*

Organic fungicide, ferric dimethyl dithiocarbamate, adapted for use as preventive for diseases on fruits, tobacco, ornamentals and certain vegetables.

KRENITE*

Water-soluble dinitro spray, both insecticide and fungicide.

LEXONE* 10-GW

BHC wettable powder, but usable as dust.

MARLATE* 50

Methoxychlor insecticide for fruits, vegetables and livestock—particularly dairy.

PARZATE* FUNGICIDE

Organic fungicide based on zinc ethylenebisdithiocarbamate for control of principal diseases on potatoes and certain other vegetable crops.

PARZATE* LIQUID

A fungicide based on disodium ethylenebisdithiocarbamate.

SULFORON* X

Micro-fine wettable sulfur fungicide.

ZERLATE*

Organic fungicide based on zinc dimethyldithiocarbamate, compatible with most insecticides.

WEED KILLERS

AMMATE*

Ammonium sulfamate, non-selective weed killer for control of hard-to-kill woody weeds and brush.

Du Pont 83% Sodium 2,4-D Weed Killer

Sodium salt of 2,4-D acid for control of many broad-leaf plants, selectively.

Du Pont 2,4-D 65% Amine Weed Killer

Contains 2,4-D as triethanolamine salt, formulated for low gallonage applications.

Du Pont 2,4-D 74% Amine Weed Killer

Contains 2,4-D as triesopropanolamine salt, formulated for low gallonage applications.

Du Pont 2,4-D 46% Ester Weed Killer

An oily, liquid form of 2,4-D containing 46% isopropyl ester.

Du Pont 60% Sodium TCA Weed Killer

A dry powder containing 60% Sodium trichloroacetate.

OTHER DU PONT PEST CONTROL PRODUCTS

Calcium Arsenate

Du Pont Spreader-Sticker

Floitation Sulfur Paste

Grasselli* Lead Arsenate

NuRexform* Lead Arsenate

Lime Sulfur

Loro*

Sulforon*

Zinc Sulfate

Phenothiazine

CONSULT YOUR EXPERIMENT STATION



REG. U. S. PAT. OFF.

Better things for better living . . . through chemistry

E. I. du Pont de Nemours & Co. (Inc.)

Grasselli Chemicals Department

Wilmington 98, Delaware

* Reg. Trade Mark of E. I. du Pont de Nemours & Co., (Inc.)

TEAMWORK MEANS

INCREASED YIELD AND IMPROVED PACK



MODERN farming is an exact science. The most successful operation has the right combination—a balanced line-up of essential factors. Like all teams, there are certain “stars”—those who provide the punch and make success more certain. We invite you to scan this agricultural “program” and spot the ones to watch:

The Line-up

Soil
Fertilizer
Seed
Nursery stock
★ EQUIPMENT
★ INSECTICIDES
★ FUNGICIDES
Management
Labor

Here are your Star Performers—

Niagara

CHEMICALS and DUSTERS

Niagara insecticides and fungicides and Niagara equipment have gone through extensive “training” to win for you. Thorough research and exhaustive tests have taken out all the guesswork. “*When you buy Niagara, you buy protection*” is not a slogan—it’s a

proved fact, accepted by top growers, large and small, from coast to coast.

Expert formulation—modern materials—time proven effectiveness and reliable manufacture are behind every Niagara product. Get ‘em on your team.



NIAGARA CHEMICAL DIVISION

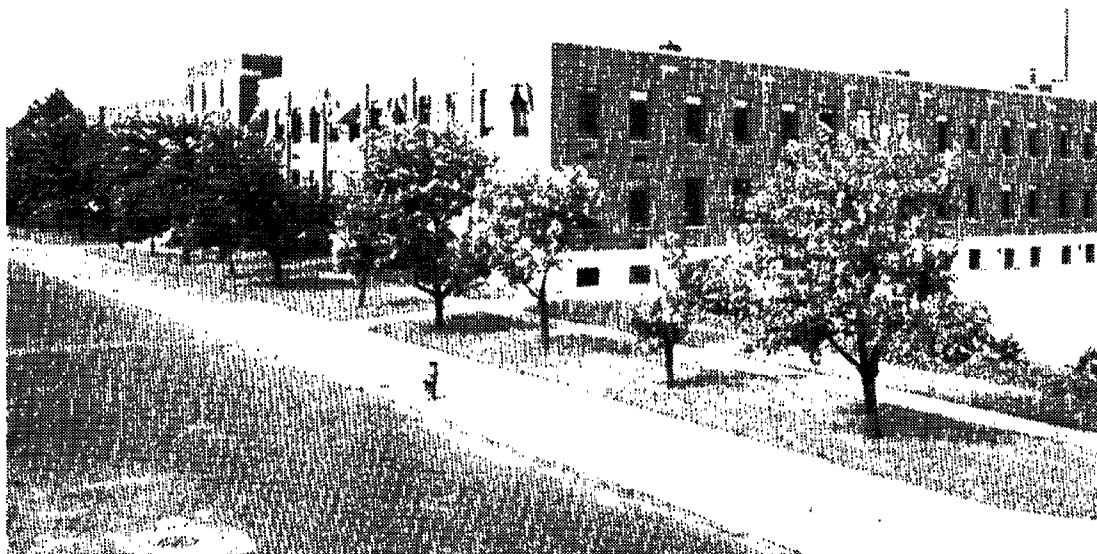
FOOD MACHINERY AND CHEMICAL CORPORATION

MIDDLEPORT, NEW YORK

Richmond, California - Jacksonville, Florida - Pompano, Florida - Tampa, Florida
New Orleans, Louisiana - Greenville, Mississippi - Harlingen, Texas

Canadian Associate: NIAGARA BRAND SPRAY CO., LTD., Burlington, Ontario

Rohm & Haas Research Serves the Farmer



*Research Laboratory at Rohm & Haas
Plant at Bridesburg, Pa.*

During the last five years newly developed agricultural chemicals have added millions of dollars to the value of our country's agricultural products.

Two products, pioneered and developed by Rohm & Haas, are playing an important role in this work. They are DITHANE and RUOTHANE.

Because of its ability to control many diseases of many crops *without retarding plant growth*, DITHANE is helping thousands of farmers to increase yields of potatoes and other crops.

The unique insecticidal qualities of RUOTHANE help orchardists through effective control of such pests as the red-banded leaf roller on apples, the orange tortrix on pears, apples, grapes and other fruit.

Today, Rohm & Haas, along with other firms, is engaged in the search for new and better chemicals for agriculture and industry.

CHEMICALS



FOR INDUSTRY

DITHANE and
RUOTHANE are
trade-marks. Reg.
U. S. Pat. Off.

**ROHM & HAAS
COMPANY**

WASHINGTON SQUARE PHILADELPHIA 5, PA.

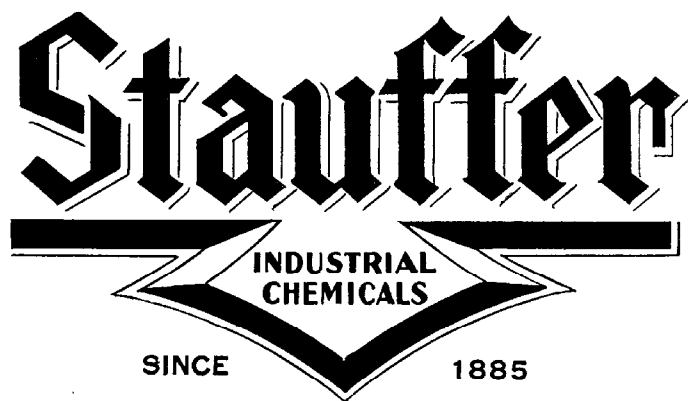
FOR
1949

BETTER FRUIT PROGRAM

USE
STAUFFER

DUSTS and SPRAYS

SEE YOUR NEAREST DEALER



Office and Plant
APOPKA, FLA.

PHONE 2331-
2341

Of Interest to

**ENTOMOLOGISTS
and GROWERS**

• •

Chlordane

The Toxicant that gives
Superior Control of the
following Chewing and Sucking INSECTS

- Ants
- Grasshoppers
- Leaf Miners
- Cutworms
- Fall Army Worms
- Mole Crickets
- Cucurbit Insects
- Wireworms
- Hornworms
- Grubs
- Thrips
- Pumpkin Bugs

CHLORDANE is a gradually volatile chemical under outdoor growing conditions. Approximately three weeks following application of insecticides containing CHLORDANE no detectable residue is found on treated crops.

Technical Chlordane is formulated into emulsified concentrates, wettable powders, and dusts by leading insecticide manufacturers.

Write for technical bulletins and data.

Julius HYMAN & Company*

DENVER, COLORADO

*Manufacturers of OCTA-KLOR
(T. M. Reg. U. S. Pat. Off.)
Technical Chlordane

EASTERN SALES OFFICE
11 West 42nd St.
New York 18, N. Y.

**FOR BETTER CONTROL
OF MORE INSECTS**
use insecticides containing

Thiophos
(REG. U. S. PAT. OFF.)
P A R A T H I O N

Commercial use of THIOPHOS Insecticides in 1948 confirmed the outstanding results obtained experimentally in 1947.

Such insects as aphids, mites, beetles, mealy bugs, and thrips are among the more important pests which are easily and economically killed with Wettable Powders and Dilute Dusts containing THIOPHOS Parathion.

THIOPHOS Insecticides are supplied by well-known manufacturers under their own brand names. Select one of these reliable manufacturers as your source of supply and discuss with an accredited representative your insect problem. Do the same with Federal and State Agricultural experts in your locality.

AMERICAN Cyanamid COMPANY

AGRICULTURAL CHEMICALS DIVISION
BREWSTER, FLORIDA

TOXAPHENE

(CHLORINATED CAMPHENE 67-69% Chlorine)

SOLUBILITY OF TOXAPHENE IN COMMON SOLVENTS

SOLVENT	POUNDS OF TOXAPHENE PER GALLON OF SOLVENT AT 27° C.
ACETONE	OVER 40
BENZENE	OVER 40
CARBON TETRACHLORIDE	OVER 40
ETHYLENE DICHLORIDE	OVER 40
FUEL OIL	20-25
HEXANE	OVER 40
KEROSENE (REGULAR)	OVER 25
KEROSENE (DEODORIZED)	OVER 25
LUBE OIL	5-7
SHELL E-407	OVER 25
SOLVACIDE 544C	OVER 25
SUN SOLVENT 1547	OVER 25
THANITE	8-10
TOLUENE	OVER 40
WHITE OIL 50	4-5

FOR AGRICULTURAL INSECTICIDES

Toxaphene is a synthetic organic insecticide toxicant, chlorinated camphene containing 67-69% Cl, developed by Hercules primarily for use in agricultural insecticides. It is an amber-colored, waxy solid with a mild odor suggestive of both chlorine and camphor.

Dusts and sprays based on toxaphene have been effective experimentally against more than 50 species of economically important insect pests. Hercules toxaphene is economically priced and easy to work with. It is readily soluble in non-polar organic solvents, as shown in the table at the left. This property can facilitate the preparation of experimental formulations, particularly concentrate-type sprays.

For specific technical information on toxaphene, either its insecticidal merits or its physical and chemical properties, we suggest you get in touch with us.

HERCULES POWDER COMPANY

INCORPORATED
991 Market Street, Wilmington 99, Delaware



HERCULES

PROTECTION PLUS—

BLACK LEAF 40

KILLS The APHIDS
but SPARES Lady Beetles
and other beneficial insects

**BLACK LEAF
40**
**FIGHTS ON
YOUR SIDE
TWO WAYS**

PROTECTS THE GARDEN
against the myriads of sucking insects which swarm almost overnight. Non-caustic. Leaves no stain on flowers, foliage or fruit.

PROTECTS THE ORCHARD
Black Leaf 40 controls aphids that deform foliage and fruit, and leafhoppers that devitalize foliage. Compatible with other standard spray materials.

DELOUSES POULTRY—
by means of Cap-Brush Applicator found in each small package. Just tap on roosts. Black Leaf 40 fumes kill body lice while chickens roost.

**THE "OLD RELIABLE"
DIP AND DRENCH**
Black Leaf 40 controls stomach worms of sheep and goats, and used as a dip, controls certain pests on livestock.



Aphids and other similar insects would over-run the world, were it not for the fact that they have enemies which constantly prey upon them. Lady beetles, aphid lions, lace-wing flies and similar beneficial insects are essential in maintaining nature's balance.

Spraying with Black Leaf 40 kills the aphids *without destroying beneficial insects* that fight on the side of mankind. Use it, and *differentiate* between your insect *friends* and insect *enemies*, for added crop protection.

Kills two ways—by contact and by fumes. Black Leaf 40 kills aphids, leafhoppers, mealy bugs, most thrips, leaf-miners, and similar insects.

ONE PRODUCT — MANY USES

Black Leaf 40 is "the old standby"—for controlling various plant, poultry and animal parasites. Used the year 'round. Keep it handy for quick results. Directions on package.



LOOK FOR THE LEAF ON THE PACKAGE

A GREAT NAME IN INSECTICIDES



Black Leaf 40
Black Leaf 155
Black Leaf Mosquito-fumer

Black Leaf Powder
Black Leaf Dry Concentrate
And Other Nicotine-Base Products

TOBACCO BY-PRODUCTS & CHEMICAL CORPORATION **LOUISVILLE 2, KENTUCKY**