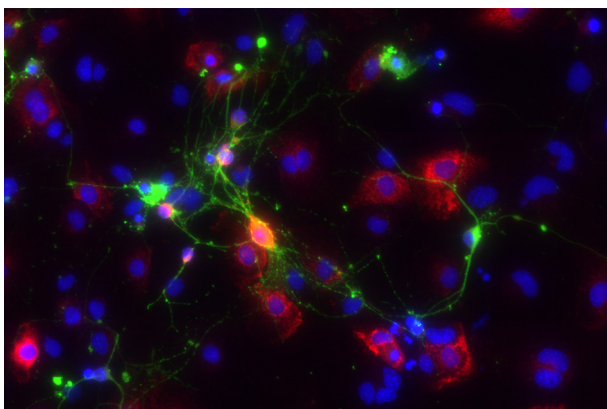


Cover Design Artist Statement

This microscopy image of primary neuronal culture from a mouse cortex was taken on an epifluorescence microscope at 40X magnification. It depicts neurons reaching out to other neurons to form functional connections, known as synapses. Something about this image reminded me of the famous painting of “God Reaching Out to Man,” known widely as the Creation of Man by Michelangelo. If you compare them side-by-side, you can observe the parallels between them. Hence, Neuron Reaching Out to Neuron seemed a fitting name to me. Oscar Wilde once stated, “Life imitates Art far more than Art imitates Life,” and I think this image illustrates this well. Science is the study of the physical and natural world, and biology is the science of life. We see beauty in life as a projection of the art that inspires us.

Florida Atlantic University Harriet L. Wilkes Honors College Biological Chemistry '20



Christy LaFlamme

Florida Atlantic University Harriet L. Wilkes Honors College

Biological Chemistry '20