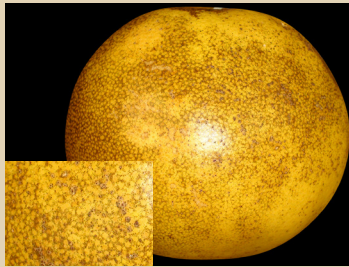


# Citrus Fruit Blemishes and Decay Caused by Fungi and Bacteria<sup>1</sup>

Mark A. Ritenour, Jamie D. Burrow,  
Megan M. Dewdney, and John Zhang



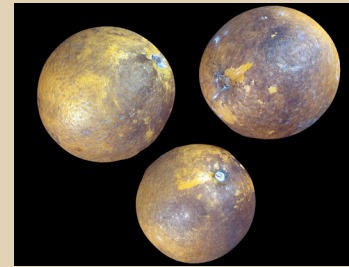
**Melanose**



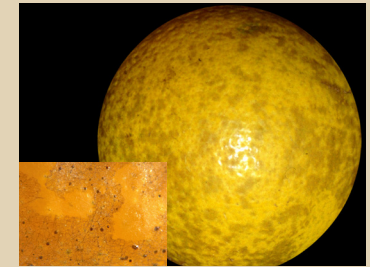
**Greasy spot rind blotch**



**Alternaria brown spot**



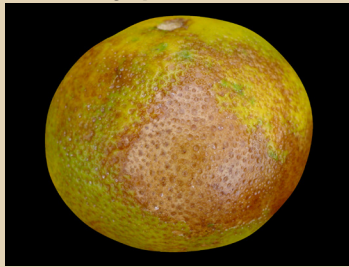
**Sooty mold**



**Sooty blotch and Flyspeck**



**Scab**



**Anthraxnose**



**Citrus black spot**



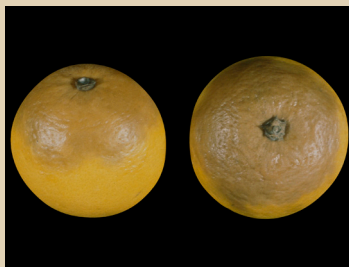
**Brown rot**



**Saprophytic growth**



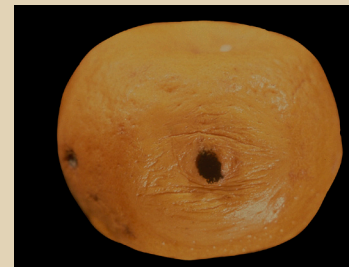
**Diplodia stem-end rot**



**Phomopsis stem-end rot**



**Alternaria stem-end rot**



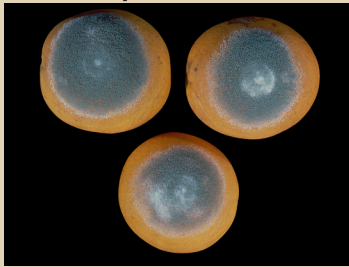
**Aspergillus rot**



**Sour rot**



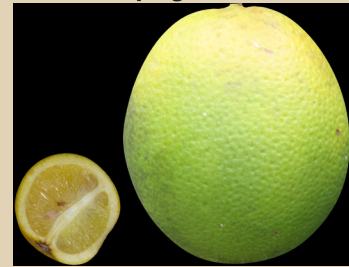
**Green mold**



**Blue mold**



**Citrus canker**



**Citrus greening**

1. This document is HS1291, one of a series of the Horticultural Sciences Department, UF/IFAS Extension. Original publication date May 2017. Visit the EDIS website at <http://edis.ifas.ufl.edu>.  
2. Mark A. Ritenour, associate professor, Horticultural Sciences Department, UF/IFAS Indian River Research and Education Center; Jamie D. Burrow, Extension program manager, UF/IFAS Citrus Research and Education Center; Megan M. Dewdney, associate professor, Plant Pathology Department, UF/IFAS Citrus Research and Education Center; and Jiuxu Zhang, research associate, UF/IFAS Indian River Research and Education Center; UF/IFAS Extension, Gainesville, FL 32611.  
The Institute of Food and Agricultural Sciences (IFAS) is an Equal Opportunity Institution authorized to provide research, educational information and other services only to individuals and institutions that function with non-discrimination with respect to race, creed, color, religion, age, disability, sex, sexual orientation, marital status, national origin, political opinions or affiliations. For more information on obtaining other UF/IFAS Extension publications, contact your county's UF/IFAS Extension office.  
U.S. Department of Agriculture, UF/IFAS Extension Service, University of Florida, IFAS, Florida A & M University Cooperative Extension Program, and Boards of County Commissioners Cooperating. Nick T. Place, dean for UF/IFAS Extension.