

## A Guide to Citrus Disease Identification<sup>1</sup>

Stephen H. Futch and L. W. Timmer<sup>2</sup>

Citrus trees in both commercial and dooryard plantings can exhibit a host of symptoms reflecting various disorders that can impact their health, vigor and productivity to varying degrees. Identifying symptoms correctly is an important aspect of management, as inappropriate remedial applications or actions can be costly and sometimes detrimental.

Disease symptoms addressed in this publication are an important aspect of commercial citrus production programs. Proper disease identification is an important factor in planning and conducting any disease control program. Disease symptoms may vary in expression on foliage, stems, roots and fruit, and may not in all cases resemble those illustrated in various publications. Symptoms can vary considerably from mild to severe depending upon infection period, climatic conditions, and age of tissue when infection occurred. When in doubt about disease identification, seek advice before committing to costly and perhaps inappropriate corrective measures.

### Greasy Spot (*Mycosphaerella citri*)

Infection by greasy spot produces a swelling on the lower leaf surface. A yellow mottle appears at the

corresponding point on the upper leaf surface. The swollen tissue starts to collapse and turn brown and eventually the brown or black symptoms become clearly visible (Fig. 1). Infection causes premature leaf drop which occurs mostly in winter and early spring.

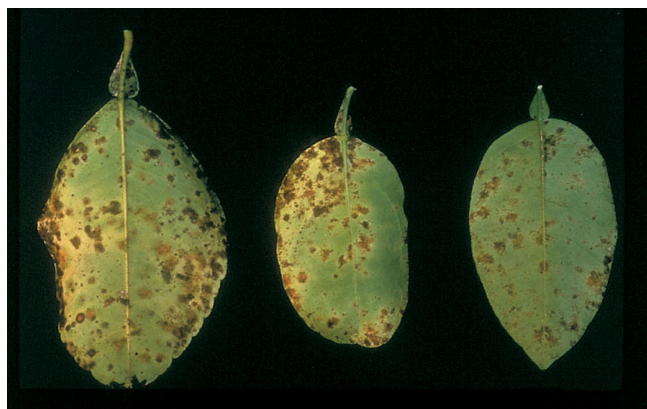


Figure 1. Greasy spot on foliage

### Greasy Spot Rind Blotch (*Mycosphaerella citri*)

Pinpoint black specks occur between the oil glands with infection on grapefruit. When specks coalesce, they give rise to a symptom called pink pitting or greasy spot rind blotch (Fig. 2). The living

1. This document is HS-798, one of a series of the Horticultural Sciences Department, Florida Cooperative Extension Service, Institute of Food and Agricultural Sciences, University of Florida. Original publication date February 2001. Reviewed April 2008. Visit the EDIS Web Site at <http://edis.ifas.ufl.edu>.

2. S.H. Futch, Extension Agent IV; and L. W. Timmer, professor; Citrus REC, Lake Alfred, Florida; Horticultural Sciences Department, Cooperative Extension Service, Institute of Food and Agricultural Sciences, University of Florida, Gainesville, 32611.

cells adjacent to the specks often retain a green color for much longer than normal or even when the fruit is degreened by ethylene.

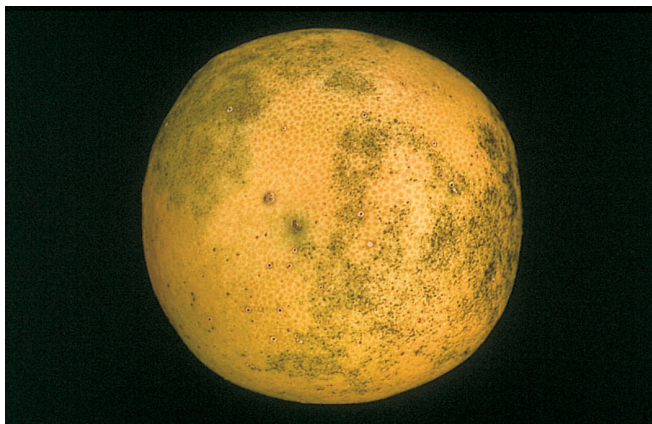


Figure 2. Greasy spot rind blotch on grapefruit

### Scab (*Elsinoe fawcettii*)

Small, pale orange, somewhat circular, elevated spots on leaves and fruit are the first evidence of the disease. As the leaves develop, the infection becomes well-defined, wart-like structures or protuberances on one side of the leaf, often with a conical depression on the opposite side (Fig. 3). The crests of the wart-like growths usually become covered with a corky pale tissue and become somewhat flattened as the fruit matures especially on grapefruit. The pustules may run together, covering large areas of the fruit (Fig. 4) or leaves. Badly infected leaves become very crinkled, distorted, and stunted. Fruit severely attacked when very small often become misshapen.

Scab can be particularly severe on Temples and lemons and often troublesome on Murcotts, Minneola tangelos and grapefruit.

### Melanose on Fruit (*Diaporthe citri*)

Lesions are small, raised, superficial dots, pustules, and irregularly shaped spots ranging from brick red to black (Fig. 5). They feel like sandpaper when touched. Pustules are larger and more raised on grapefruit than on round oranges and tangerines.

The pustules often form in a tear-streaking pattern caused by water flowing down the surface and carrying spores. Fruit becomes resistant to infection about 12 weeks after petal fall.



Figure 3. Scab on foliage



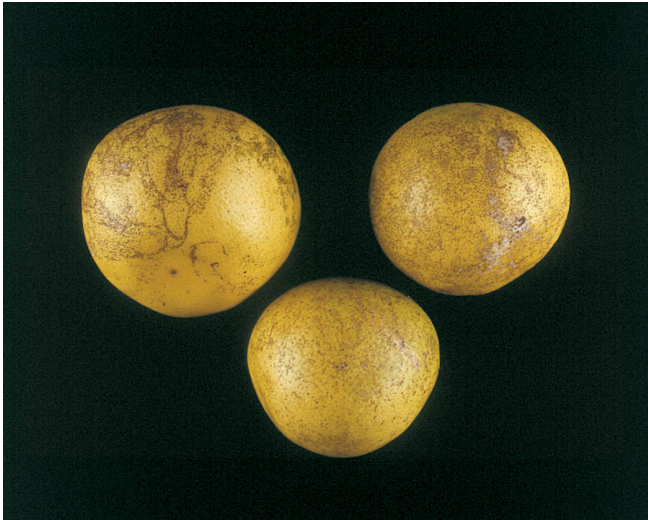
Figure 4. Scab on fruit

Spores of *Diaporthe citri* arise from fruiting structures that develop on twigs that have recently died. The spores are moved to fruit via rain. Infected fruit does not serve as an inoculum source.

Phomopsis stem-end rot of mature fruit after harvest is also caused by *Diaporthe citri*.

### Melanose on Leaves (*Diaporthe citri*)

On foliage, melanose first appears on the young leaves as minute, dark circular depressions with yellowish margins. Later they become raised, are rough, brown in color, and the yellow margins disappear (Fig. 6). Leaves infected when very young may become distorted. Infested leaves do not serve as an inoculum source. Young green twigs can be infected.



**Figure 5.** Melanose on fruit

In most cases, it is difficult and not economical to try to control melanose on the foliage.



**Figure 6.** Melanose on leaves

## Star Melanose

“Star melanose” occurs when copper is applied late during hot, dry weather and is due to copper damage to leaves. It has no relationship to melanose but may resemble symptoms of that disease. Copper causes the developing tissues to become more corky and darker than normal and the shape of the lesion often resembles a star (Fig. 7).



**Figure 7.** Star melanose

## Alternaria Brown Spot (*Alternaria alternata*)

This fungus attacks fruit, leaves, and young shoots of susceptible varieties. Dancy tangerines and Minneola tangelos are the most severely affected varieties. Murcotts, Orlando tangelo, Lee, Nova and Sunburst are often affected.

On fruit, the first symptoms appear as small, slightly depressed black spots which can cause the young fruit to fall from the tree (Fig. 8). Fruit is usually immune to infection after reaching 3 to 4 months of age.

On susceptible varieties, only the young leaves and shoots can be infected. When infected they will produce brown, necrotic, blighted areas of various sizes, usually surrounded by yellow halos on the plant tissue (Fig. 9). Infected foliage and fruit may prematurely fall from the tree with occasional shoot dieback.

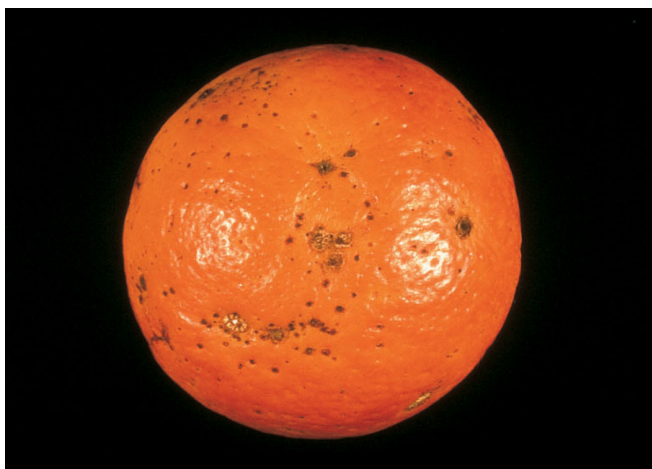


Figure 8. Alternaria brown spot on fruit



Figure 9. Alternaria brown spot on foliage

### Postbloom Fruit Drop (PFD) (*Colletotrichum acutatum*)

The disease appears as peach- to brown-colored necrotic spots on petals of flowers (Fig. 10), and produces fruit drop and the formation of persistent buttons (calyces) which remain attached to stems.

Damage is most severe on navel and Valencia oranges, but can be found on all varieties of citrus including lemons and limes.

PFD is highly moisture dependent. Free water and high humidity are needed for infection, but wind blown rain and/or rain splash are needed for dispersal of the spores from infected tissues to nearby healthy bloom.

The pathogen survives on the surface of leaves, twigs and buttons between flowering periods.



Figure 10. Postbloom fruit drop infection on bloom

### Foot Rot (*Phytophthora nicotianae*)

Lesions on a tree trunk usually occur on the bark at or just above the budunion on susceptible scions.

The lesions will first appear as a drop of gum on the surface of the bark. Upon further investigation, a brown, discolored, necrotic, slippery area will be found under the bark. In some cases, the margin of the infected area will break away from the healthy area and may curl back. Lesions can eventually girdle the entire tree trunk (Fig. 11).

When the trunk is partially girdled by foot rot, the tree foliage may become dull and chlorotic, with the mid and main lateral veins of each leaf becoming yellow whereas the rest of the leaf remains nearly normal. This is similar to yellow vein chlorosis which is caused by nitrogen deficiency.

### Brown Rot of Fruit (*Phytophthora* *species*)

Infected fruit exhibit a light brown, leathery decay which is not sunken below adjacent rind and produces a characteristic pungent, rancid odor (Fig. 12). Under humid conditions, white mycelium is produced on rind surface. Fruit may become infected via soil contact, splash dispersal with soil particles or fruit-to-fruit spread by windblown rain. Infected fruit prematurely fall from the tree. All cultivars may be affected with early season varieties showing greater susceptibility.



Figure 11. Foot rot on trunk lesion



Figure 12. Brown rot on fruit

### **Citrus Canker (*Xanthomonas axonopodis*)**

Lesions are produced on young fruit and leaves of citrus (Fig. 13). Bacteria are produced under moist conditions and dispersed by windblown rains. Bacteria enter leaf stomates or wounds on leaves, twigs or fruit.

Citrus canker reduces yields, fresh fruit quality, and increases leaf defoliation.



Figure 13. Citrus canker lesions on fruit