

# Carp Edema Virus Disease (CEVD) / Koi Sleepy Disease (KSD)<sup>1</sup>

Shohreh Hesami, Pedro Viadanna, Natalie Steckler, Staci Spears, Patrick Thompson, Karen Kelley, Roy Yanong, Ruth Francis-Floyd, Johnny Shelley, Joseph Groff, Andy Goodwin, Olga Haenen, and Thomas Waltzek<sup>2</sup>

## Introduction

Carp edema virus disease (CEVD) is an emerging disease of concern to koi enthusiasts and carp aquaculture in the United States and around the world. Carp edema virus can cause disease and high mortality rates in wild and cultured varieties of common carp (*Cyprinus carpio*) including koi. Sick fish may exhibit erosive or hemorrhagic skin lesions with swelling (edema) of the underlying tissues, thus the disease was originally named “viral edema of carp” (Oyamatsu et al. 1997a). The disease has also been referred to as “koi sleepy disease” (KSD) because infected fish become lethargic and unresponsive (Miyazaki et al. 2005). The severity of disease is greatest in juveniles, which may hang just under the surface of the water before succumbing, while adult fish may lie motionless on the bottom of the pond/tank.

Carp edema virus disease/koi sleepy disease was first characterized from Japanese koi in 1974 and since has been shown to be widespread across Japan where koi are cultured (Murakami et al. 1976; Ono et al. 1986; Amita et al. 2002). The international trade in koi has likely led to the global spread of CEVD/KSD with outbreaks documented in imported koi in North America and Europe (Hedrick et al. 1997; Way and Stone 2013; Haenen et al. 2013). In the United States, CEVD/KSD has been associated with outbreaks in imported and domestic koi in the following states: California (in the years 1996 and 2010), Washington (2005), North Carolina (2005), Georgia (2005 and 2010), and Florida (2014 and 2015) (Hedrick et al. 1997; Waltzek et al. 2014). Carp edema virus has been detected widely across Europe in koi from at least Austria, Czech Republic, France, Germany, the Netherlands, and the United Kingdom (Haenen et al. 2013; Way and Stone 2013; Jung-Shoroers et al. 2015; Lewisch et al. 2015; Vesely et al. 2015).

1. This document is FA189, one of a series of the School of Forest Resources and Conservation Program in Fisheries and Aquatic Sciences, UF/IFAS Extension. Original publication date October 2015. Visit the EDIS website at <http://edis.ifas.ufl.edu>.
2. Shohreh Hesami, postdoctoral associate in infectious diseases and pathology, College of Veterinary Medicine UF/IFAS Extension; Pedro Henrique de Oliveira Viadanna, PhD student, University of Florida; Natalie K. Steckler, graduate student in infectious diseases and pathology, College of Veterinary Medicine, University of Florida; Staci Spears, veterinary student in infectious diseases and pathology, College of Veterinary Medicine, UF/IFAS Extension; Patrick M. Thompson, biological scientist, College of Veterinary Medicine, UF/IFAS Extension; Karen L. Kelley, MSA-certified electron microscopist, manager Interdisciplinary Center for Biotechnology Research (ICBR), Cellomics Division, Electron Microscopy and Bio-imaging Core Laboratory, University of Florida, Gainesville, FL 32611; Roy P. E. Yanong, professor and Extension veterinarian, Tropical Aquaculture Laboratory, Program in Fisheries and Aquatic Sciences, School of Forest Resources and Conservation, UF/IFAS Extension, Ruskin, FL 33570; Ruth Francis-Floyd, professor, Department of Large Animal Clinical Sciences, College of Veterinary Medicine and Program in Fisheries and Aquatic Sciences, School of Forest Resources and Conservation, UF/IFAS Extension; Johnny Shelley, staff veterinarian and health department manager, 5D Tropical Inc., Plant City, FL 33565; Joseph M. Groff, associate pathologist, School of Veterinary Medicine, University of California Davis, California 95616; Andrew Goodwin, fish health program manager, US Fish and Wildlife Service, Pacific Region, 911 NE 11th Avenue, Portland, Oregon 97232; Olga L.M. Haenen, head of the National Reference Laboratory for Fish, Shellfish and Crustacean Diseases, Central Veterinary Institute (CVI) of Wageningen UR, P.O. Box 65 8200 AB Lelystad, NL; and Thomas B. Waltzek, assistant professor, College of Veterinary Medicine, UF/IFAS Extension.

The virus has recently been detected for the first time in the southern hemisphere on koi farms in Brazil (Viadanna et al. 2015). Carp edema virus has been detected in common carp within Austria, the Czech Republic, Italy, Poland, the Netherlands, and the United Kingdom (Way and Stone 2013; Lewisch et al. 2015; Pretto et al. 2015; Vesely et al. 2015; M. Reichert personal communication; O. Haenen personal observation).

## What is CEV?

Carp edema virus is a large, double-stranded DNA virus thought to belong to the poxvirus family of viruses (family *Poxviridae*). Carp edema virus disease/koi sleepy disease should not be confused with another disease referred to as “carp pox,” which is caused by a herpesvirus (*Cyprinid herpesvirus 1*) that causes wart-like growths on the skin in common carp varieties (Hartman et al. 2013). Although CEV has not been grown in the laboratory by cell culture, poxvirus-like particles have been visualized in infected gill epithelial cells by transmission electron microscopy (Ono et al. 1986; Hedrick et al. 1997; Oyamatsu et al. 1997a; Miyazaki et al. 2005).

## What are the signs of CEVD/KSD?

As the common name “koi sleepy disease” implies, CEVD/KSD-infected larger carp and koi display behavioral abnormalities including unresponsiveness and lethargy, with fish often lying motionless on their sides or bellies on the bottom of the tank for long periods of time unless disturbed (Figure 1). If the “sleepy” carp or koi are disturbed, they may swim for a short period of time, but soon settle back into an inactive state on the bottom of the tank (Miyazaki et al. 2005). In CEVD/KSD, weakened juveniles may swim slowly and aimlessly along the margins of the pond/tank or hang motionless just under the surface of the water (Oyamatsu et al. 1997a). However, it should be noted that one of the authors (A. Goodwin personal observation) has observed a similar “sleepy” presentation in fish due to sudden (acute) swim bladder under-inflation after stressful harvest or handling. Infected fish will often refuse to eat, which further weakens the fish. Diseased juvenile koi may have extensive erosions or hemorrhages of the skin with edema (swelling) of the underlying tissues (Miyazaki et al. 2005). Other external signs of infection may include sunken eyes (enophthalmos) and pale swollen gills (Figure 2, Haenen et al. 2013). These similar external signs (i.e., sunken eyes and gill lesions) may also be observed with another important viral disease of common carp known as koi herpesvirus disease (KHVD) caused by *Cyprinid herpesvirus 3* (Hartman et al. 2013). No grossly visible internal disease signs have been

reported with CEVD/KSD. The disease is typically observed at water temperatures between 15–25°C (59–77°F) in koi, and at 6–10°C (43–50°F) in common carp and can kill up to 75–100% of juvenile koi during an outbreak (Hedrick et al. 1997; Miyazaki et al. 2005; Way and Stone 2013).



Figure 1. A group of young-of-the-year koi displaying the typical KSD behavioral abnormality of extreme lethargy manifesting as fish lying motionless on their sides or bellies on the bottom of the tank.  
Credits: Johnny Shelley



Figure 2. Koi with CEVD/KSD that presented with anorexia (loss of appetite), severe necrosis (cell death) of the gill tissue, and sunken eyes (koi had been frozen).  
Credits: Olga Haenen

## How is a CEVD/KSD diagnosis reached?

In addition to an appropriate case history and clinical signs, further supporting evidence of CEVD/KSD may be obtained by examining wet mounts of the gills. In the early stages of the disease, the gill epithelial cells at the tips of the gill filament proliferate, resulting in a thickening or “clubbing” appearance (Ono et al. 1986; Miyazaki et al. 2005). In CEV-infected fish, the proliferation may extend to the base of the gill filament and impair gill function. Thickening of the gill tissue is not a problem exclusive to CEVD/KSD, and in many cases may be caused by other issues such as poor water quality. Also, as with many fish diseases, there may be secondary or opportunistic infections that occur in CEV-infected carp and koi (Haenen et al. 2013; Lewisch et al. 2014).

Observation of microscopic abnormalities from stained slides prepared from formalin-fixed gill and skin tissues (histopathology) can further support a CEVD/KSD diagnosis. Typical lesions observed by light microscopy include: 1) hypertrophy (increased size) and hyperplasia (increased numbers of cells) of the gill epithelium with associated inflammation and 2) extensive destruction of the skin and edema (swelling) of the underlying tissues (Oyamatsu et al. 1997a; Miyazaki et al. 2005). A definitive diagnosis requires specialized laboratory testing such as Polymerase Chain Reaction (PCR) that detects the DNA of CEV (Oyamatsu et al. 1997b). Recently validated PCR tests have been developed and are available at the University of Florida’s Wildlife and Aquatic Animal Veterinary Disease Laboratory in Gainesville (Waltzek and Viadanna unpublished). Transmission electron microscopy of gill tissues may also be used to demonstrate hypertrophied (enlarged) gill epithelial cells containing large spheroid poxvirus-like particles (Figure 3). To date, the virus has not been propagated in cell culture (Oyamatsu et al. 1997a).

## How do fish get infected with CEV?

In Japan, CEVD/KSD typically occurs in the rainy season among juvenile koi (young-of-the-year) after they have endured the stress of being moved from green-water earthen nursery ponds into clear-water concrete-lined ponds for grading. Although the source of the virus is unknown, presumably juvenile koi are exposed before or during the stress of capture and subsequently show signs of the disease. As mentioned above, fish may also lie on the bottom of the tank in situations where CEV is absent. This phenomenon typically occurs after harvest from ponds when water temperatures exceed 27°C (80°F),

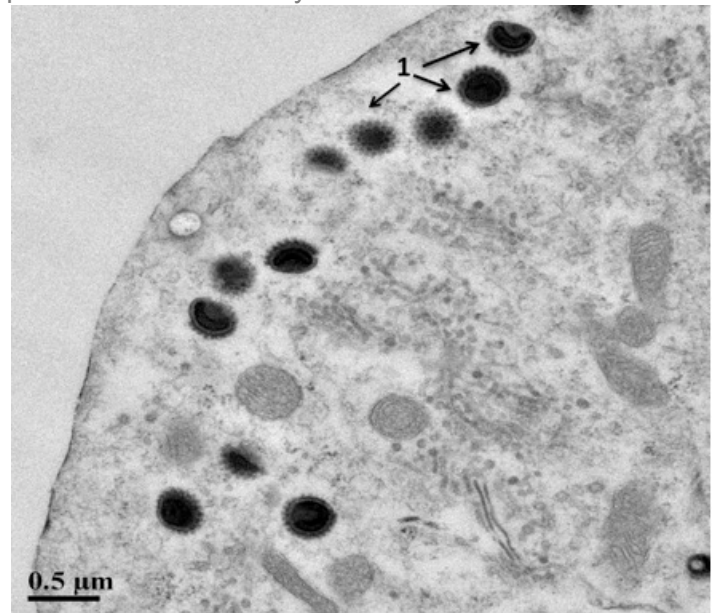


Figure 3. Transmission electron photomicrograph of a koi gill epithelial cell containing spheroid CEV particles indicated by the arrows.

Credits: Shoreh Hesami

and affects nearly 100% of fish within 1 hour of handling. Typical CEVD/KSD outbreaks occur after the addition of infected fish without quarantine into an established pond of koi that are presumed to be *naïve*, which means never exposed to CEV. Mortality in naïve koi or common carp exposed by bath challenge to CEV begins as early as day 6 and continues until day 16 post-infection (Oyamatsu et al. 1997a). The aforementioned study suggests the virus may be transmitted via exposure to contaminated water. Thus, diseased fish shedding virus into the water from gill and skin lesions are likely an important mode of transmission. Whether CEV is vertically transmissible (i.e., from breeders in the eggs or sperm) and whether CEV-exposed fish clear the virus after infection or can harbor the virus as carriers is currently unknown. The length of time the virus remains infectious in water is also unknown (Oyamatsu 1997a).

## Which fish are susceptible to CEV?

Common carp and koi (*Cyprinus carpio*) are the only known susceptible species. However, other species including goldfish (*Carassius auratus*) have not yet been exposed to CEV in a controlled laboratory setting. Goldfish have been shown to be susceptible to other viral diseases affecting carp/koi such as the rhabdovirus spring viremia of carp (Petty et al. 2012). Interestingly, similar poxvirus-like agents have been partially characterized in a farmed ayu (*Plecoglossus altivelis*) (Wada et al. 2008), farmed Atlantic salmon (*Salmo salar*) (Nylund et al. 2008; Gjessing et al 2015), and a managed group of Cape seahorses (*Hippocampus capensis*) (Waltzek et al. 2011). Currently, little

is known about the genetic relationships of CEV and other fish poxviruses. However, comparison of genetic sequences of CEV strains from around the world in common carp and koi have revealed they likely represent a single novel poxvirus species (Way and Stone 2013; Waltzek et al. 2014).

## How does water temperature affect CEV?

Water temperature is an important factor in the occurrence of CEVD/KSD. In Japan, outbreaks in juvenile koi occur in the rainy season from late June to late July at water temperatures between 15 and 25°C (59–77°F) (Oyamatsu et al. 1997a), although many fish also develop CEVD/KSD in the spring and fall (Miyazaki et al. 2005). Outbreaks in koi facilities and hobbyists' ponds in the United States and the United Kingdom typically occur at similar water temperatures (listed above) (Way and Stone 2013; Waltzek et al. 2014). However, a novel strain of CEV has been associated with UK disease episodes in wild common carp during the winter and early spring at much lower water temperatures, between 6 and 9°C (43–48°F) (Way and Stone, 2013), and similarly in the Netherlands (O. Haenen personal observation). Recently, CEVD/KSD in common carp and koi has also been reported at lower water temperatures between 7–15°C (44–59°F) in Austria (Lewisch et al. 2014).

## How can CEVD/KSD be prevented?

Before acquiring any CEVD/KSD-susceptible fish, ask the supplier if there have been any major unexplained losses in the population. Although diagnostic tests for monitoring and verifying CEV have only been developed recently, ask suppliers if any testing for CEV has been done and request a copy of lab result documentation. The best way to prevent CEVD/KSD is to know your fish suppliers and to have a good working relationship with them. In Japan, koi producers feel that 0.5% (5g/L) salt helps to prevent the disease after the young-of-the-year fish suffer the stress of moving from the earthen nursery ponds into cement-lined ponds for grading (Seno et al. 2003; Miyazaki et al. 2005; Way and Stone 2013). Some producers also avoid harvest during periods when water temperatures are permissive for the disease (15–25°C or 59–77°F). Always isolate and test sick fish showing suspect clinical signs. Remove dead fish from ponds immediately to minimize disease transmission. Depopulate ponds harboring CEV to prevent further mortalities and ongoing spread to naïve individuals. Preventative depopulation is especially highly recommended for production facilities. Koi owners should understand the potential for ongoing disease and spread and monitor for signs of trouble. Best health management

practices should be followed to minimize the risk of CEVD/KSD outbreaks. To keep fish healthy and better able to resist disease, quarantine and test new arrivals; avoid crowding and stressful events; maintain good water quality; and provide proper nutrition.

Quarantine (separation from other uninfected koi) is the most dependable method to avoid the introduction of pathogens into a pond or facility (Yanong and Erlacher-Reid 2012). To implement an effective quarantine procedure, all new fish must be kept in a separate system, ideally in a different building or area from the resident fish. Feed, handle, and maintain resident fish first, then treat the new fish to avoid introducing pathogens to resident fish. The quarantined fish require dedicated equipment such as nets, buckets, and siphon hoses that are used only for them. In addition, everyone must use foot baths and hand washes when entering and when leaving the quarantine area. Fish should be quarantined for a minimum of 30 days. For CEV, new koi should be quarantined in water that is a constant temperature (between 15–25°C) for at least 30 days.

## Is CEV a risk to humans?

Fish viruses do not infect humans and thus CEV is not harmful to humans.

## Whom should I contact if I suspect my fish have CEV/KSD or if I want more information?

Commercial fish producers, wholesalers, and retailers may contact Dr. Thomas Waltzek, co-director of the Wildlife and Aquatic Veterinary Disease Laboratory at\*:

UF/IFAS Wildlife and Aquatic Veterinary Disease Laboratory  
Bldg. 471, 2173 Mowry Road  
Gainesville, Florida 32611  
(352) 273-5202  
Email: [tbwaltzek@ufl.edu](mailto:tbwaltzek@ufl.edu)

\*Please note: the Wildlife and Aquatic Veterinary Disease Laboratory accepts cases from commercial fish producers, wholesalers, and retailers only. Hobbyists and personal koi pond owners may search for an aquatic veterinarian or aquatic diagnostic laboratory in their area on the AquaVetMed website (<http://www.aquavetmed.info>) or the American Association of Fish Veterinarians' "Find A Fish Vet" link ([fishvets.org](http://fishvets.org)). .

## References

- Amita, K., M. Oe, H. Matoyama, N. Yamagushi, and H. Fukuda. 2002. "A survey of Koi herpes virus and carp edema virus in colorcarp cultured in Niigata Prefecture, Japan." *Fish. Pathol.* 37:197–8.
- Gjessing, M.C., N. Yutin, T. Tengs, T. Senkevich, E. Koonin, H. P. Rønning, M. Alarcon, S. Ylving, K. I. Lie, B. Saure, L. Tran, B. Moss, and O. B. Dale. 2015. "Salmon gill poxvirus, the deepest representative of the Chordopoxvirinae." *J Virol* 89:9348–9367.
- Haenen, O., K. Way, D. Stone, and M. Engelsma. 2013. "Koi Sleepy Disease found for the first time in koi carps in the Netherlands." [in Dutch]. *Tijdschr. Diergeneeskd.* 5:27–29.
- Hartman, K., R. P. E. Yanong, D. B. Pouder, B. D. Petty, R. Francis-Floyd, A. C. Riggs, and T. B. Waltzek. 2013. *Koi herpesvirus (KHV, CyHV3) Disease*. University of Florida EDIS Publication VM113. <http://edis.ifas.ufl.edu/vm113>.
- Hedrick, R.P., D. B. Antonio, and R. J. Munn. 1997. "Poxvirus like agent associated with epizootic mortality in juvenile koi (*Cyprinus carpio*)." *FHS Newsletter*. 25:1–3
- Jung-Schroers, V., M. Adamek, F. Teitge, J. Hellmann, S. M. Bergmann, H. Schütze, D. W. Kleingeld, K. Way, D. Stone, M. Runge, B. Keller, S. Hesami, T. Waltzek, and D. Steinhagen. 2015. "Another potential carp killer?: Carp Edema Virus disease in Germany." *BMC Vet Res.* 11:114.
- Lewisch, E., B. Gorgoglione, K. Way, and M. El-Matbouli. 2015. "Carp edema virus/koi sleepy disease: An emerging disease in central-east Europe." *Transbound Emerg Dis.* 62:6–12.
- Miyazaki, T., T. Isshiki, H. Katsuyuki. 2005. "Histopathological and electron microscopy studies on sleepy disease of koi *Cyprinus carpio koi* in Japan." *Dis Aquat Organ.* 65:197–207.
- Murakami, Y., M. Shitanaka, S. Toshida, and T. Matsuzato. 1976. "Studies on mass mortality of juvenile carp: about mass mortality showing edema." *Bull Hiroshima Fresh Water Fish Exp Station* 19–33 (in Japanese).
- Nylund, A., K. Watanabe, S. Nylund, M. Karlsen, P. A. Sæther, C. E. Arnesen, and E. Karlsbakk. 2008. "Morphogenesis of salmonid gill poxvirus associated with proliferative gill disease in farmed Atlantic salmon (*Salmo salar*) in Norway." *Arch Virol.* 153:1299–1309.
- Ono, S.I., A. Nagai, and N. Sugai. 1986. "A histopathological study on juvenile colorcarp *Cyprinus carpio*, showing edema." *Fish Pathol.* 21:167–175.
- Oyamatsu, T., N. Hata, K. Yamada, T. Sano, and H. Fukuda. 1997a. "An etiological study on mass mortality of cultured colorcarp juveniles showing edema." *Fish Pathol.* 32:81–88.
- Oyamatsu, T., H. N. Matoyama, K. Yamamoto, and H. Fukuda. 1997b. "A trial for the detection of Carp Edema Virus by using polymerase chain reaction." *Suisanzoshoku* 45:247–251.
- Petty, B.D., R. Francis-Floyd, and R.P.E. Yanong. 2012. *Spring Viremia of Carp*. University of Florida EDIS Publication VM 142. <http://edis.ifas.ufl.edu/vm106>
- Pretto, T., M. Abbadi, V. Panzarin, R. Quartesan, A. Manfrin, and A. Toffan. 2015. "Carp edema virus (CEV): first detection in Italy." 17<sup>th</sup> International Conference on Diseases of Fish and Shellfish. Las Palmas, Gran Canaria. Abstract and poster.
- Seno, R., N. Hata, T. Oyamatsu, and H. Fukuda. 2003. "Curative effect of 0.5% salt water treatment on Carp, *Cyprinus carpio*, infected with Carp Edema Virus (CEV) results mainly from reviving the physiological condition of the host." *Suisan zoshoku.* 51:123-124
- Vesely, T., D. Pokorova, S. Reschova, V. Piackova. 2015. "Detection of carp edema virus in common carp (*Cyprinus carpio*) and koi in the Czech Republic." 17<sup>th</sup> International Conference on Diseases of Fish and Shellfish. Las Palmas, Gran Canaria. Las Palmas, Gran Canaria. Abstract and poster.
- Viadanna, P., F. Pilarski, S. Hesami, and T. Waltzek. 2015. "First report of Carp Edema Virus (CEV) in South American Koi." 40th Eastern Fish Health Workshop, Charleston, NC. Abstract and presentation.
- Wada, S., O. Kurata, K. Hatai, H. Ishii, K. Kasuya, and Y. Watanabe. 2008. "Proliferative branchitis associated with pathognomonic atypical gill epithelial cells in cultured Ayu *Plecoglossus altivelis*." *Fish. Pathol.* 43:89–91.
- Waltzek, T. B., E. S. Weber, J. M. Groff, R. W. Nordhausen, S. E. LaPatra, A. E. Goodwin, and R. P. Hedrick. 2011. "Double-stranded DNA viruses of poikilothermic viruses." 36th Eastern Fish Health Workshop, Charleston, NC. Abstract and presentation.

Waltzek, T. B., M. Gotesman, N. Steckler, S. Spears, J. Shelley, and R. P. E. Yanong. 2014. "Overview of DNA Viruses Impacting Ornamental Aquaculture." ISAAH . Portland, OR. Presentation and Abstract.

Way, K., and D. Stone. 2013. "Emergence of carp edema virus-like (CEV-like) disease in the UK." *Finfish News*.15:32–35.

Yanong, R.P.E., and C. Erlacher-Reid. 2012. *Biosecurity in Aquaculture, Part 1: An Overview*. USDA Southern Regional Aquaculture Center (SRAC) Publication No. 4707. <http://fisheries.tamu.edu/files/2013/09/SRAC-Publication-No.-4707-Biosecurity-in-Aquaculture-Part-1-An-Overview.pdf>