

Clavate Tortoise Beetle, *Plagiometriona clavata* (Fabricius) (Insecta: Coleoptera: Chrysomelidae)¹

Robert E. Woodruff²

Introduction

Plagiometriona clavata (Fabricius) is common and can be recognized easily by its general form and appearance.



Figure 1. Adult clavate tortoise beetle, *Plagiometriona clavata* (Fabricius).

Credits: David Cappaert, www.forestryimages.org

The Integrated Taxonomic Information System lists two subspecies:

- *Plagiometriona clavata clavata* (Fabricius, 1798)
 - *Plagiometriona clavata testudinaria* (Boheman, 1855)
- (ITIS 2010)

Synonymy

Unfortunately, this relatively common beetle has gone under several names, which created some confusion. The formal synonymy follows:

Plagiometriona clavata (Fabricius), Fattig 1948

Coptocycla clavata (Fabricius), Boheman 1855

Deloyala clavata (Fabricius), Dejean 1837

Cassida clavata Fabricius 1798

Some of the taxonomic confusion was discussed by Barber (1918, 1946) and Hincks (1952). Although there is no specific synonym listed, Barber (1918) suggested the possibility that *Deloyala testudinaria* from Central America may intergrade with *clavata* in Texas, New Mexico, and Arizona.

Distribution

The most extensive distribution records were provided by Barber (1918): Arizona, Florida, Kansas, Kentucky, Louisiana, Maryland, Massachusetts, Michigan, Missouri, Nebraska, New Jersey, New Mexico, Rhode Island, Tennessee, and Texas.

1. This document is EENY-392 (originally published as DPI Entomology Circular No. 155), one of a series of the Entomology and Nematology Department, UF/IFAS Extension. Original publication date December 2006. Revised August 2015. Visit the EDIS website at <http://edis.ifas.ufl.edu>. This document is also available on the Featured Creatures website at <http://entnemdept.ifas.ufl.edu/creatures/>.

2. Robert E. Woodruff, retired, Florida Department of Agriculture and Consumer Services, Division of Plant Industry; UF/IFAS Extension, Gainesville, FL 32611.

Blatchley recorded it from Lake, Wells, Putnam, and Posey Counties, Indiana (1918) and from Lake Worth, Enterprise, Eustis, and Gainesville, Florida (1924), suggesting that it is apparently confined to the northern half of the state.

Fattig (1948) recorded it from Atlanta, Georgia; Balsbaugh and Hays (1972) listed it from Lee, Madison, and Mobile Counties, Alabama; and Wilcox (1954) reported it as common in Ohio.

Arnett (2000) lists this species as found in all major regions of North America (north of Mexico), except for the Pacific Northwest. However, this does not mean it is found in all the states or provinces in those regions.

Description

Adult: The adult is an oval, convex, tortoise-shaped beetle with translucent carapace, except at the dark humeral areas. The length is 6.5 to 7.5 mm, while the width is 5.5 to 6.3 mm. Color varies from brilliant brassy green, golden and brown in life, to a dull yellow brown to tan with dark markings in dead specimens. In side view, it is dome-shaped with a conical peak near the middle, behind the scutellum.

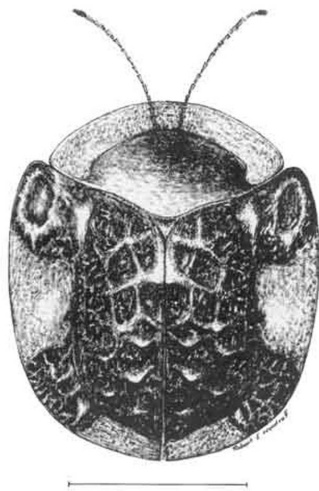


Figure 2. Adult clavate tortoise beetle, *Plagiometriona clavata* (Fabricius). Line represents 3 mm.
Credits: Division of Plant Industry

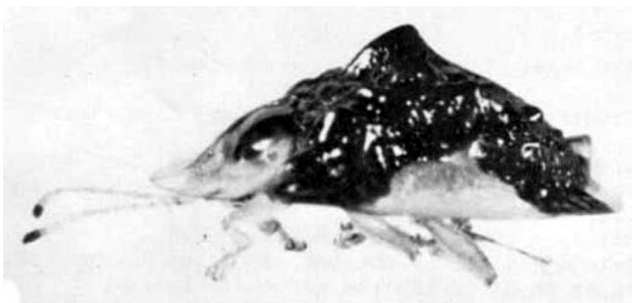


Figure 3. Lateral view of an adult clavate tortoise beetle, *Plagiometriona clavata* (Fabricius), showing conical peak.
Credits: Division of Plant Industry

The dorsal surface is rugose and tuberculate (no other species of United States tortoise beetle, subfamily Cassidinae, has such a surface). The antenna is variable in color, but at least some of the terminal segments are black; the segments are free when at rest, and there is no antennal groove on the underside of the prothorax; the third segment is slightly longer than the second segment. The head is covered by the arcuate front margin of the pronotum. The tarsal claws are angularly dilated at their base. [The illustration of this species by Dillon and Dillon (1961) has the legend reversed with that of *Metriona bivittata* (Say); *Plagiometriona clavata* is actually figure 9 on plate 74.]

Larva: The larva is a typical tortoise beetle type, but very unlike most other beetle larvae. The last abdominal segment has a special “fecal fork” which permits the attachment of dried fecal matter. This fecal mass is carried over the dorsum in the same form as trash bugs (Neuroptera), and presumably offers a degree of protection through camouflage. The body is green, flattened, and almost entirely fringed with whitish multispiculate projections.



Figure 4. Lateral view of the larva of a clavate tortoise beetle, *Plagiometriona clavata* (Fabricius). Head of larva is to the right. Anal fork with feces is held above larva.
Credits: Division of Plant Industry



Figure 5. Posterior view of the larva of a clavate tortoise beetle, *Plagiometriona clavata* (Fabricius), showing last segment bearing the anal fork.

Credits: Division of Plant Industry

Hosts and Biology

Like many other members of the subfamily Cassidinae, this species appears to prefer plants of the family Solanaceae. Host records in the literature are mostly for adults and may not represent actual feeding: linden and oak (Blatchley 1910); sycamore, oak, linden, and Japanese lantern (Wilcox 1954); morning glory (Dillon and Dillon 1961); oak and various species of Solanaceae (Blatchley 1924).

Selected References

Arnett Jr RH. 2000. American Insects: A Handbook of the Insects of America North of Mexico. CRC Press. Boca Raton. 1003 pp.

Balsbaugh Jr EU. 1972. The leaf beetles of Alabama (Coleoptera: Chrysomelidae). Auburn University Agricultural Experiment Station Bulletin 441: 1-223.

Barber HS. 1918. A review of North American tortoise beetles (Chrysomelidae: Cassidinae). Proceedings of the Entomological Society of Washington 18: 113-127.

Barber HS. 1946. Correction of name of tortoise beetles. Bulletin of the Brooklyn Entomological Society 41: 161.

Blatchley WS. 1910. An Illustrated Descriptive Catalogue of the Coleoptera or Beetles Known to Occur in Indiana. Nature Publishing Co., Indianapolis, Ind. 1385 pp.

Blatchley WS. 1924. The Chrysomelidae of Florida. Florida Entomologist 8: 33-46.

Boheman CH. 1855. Monographia Cassidarum 3: 1-543; 1 pl. Holmiae, officina Norstedtiana.

Dejean PFMA. 1837. Catalogue des Coleopteres de la collection d'Auguste Dejean. Third Edition, Paris. 503 pp.

Dillon ES, Dillon LS. 1961. A Manual of Common Beetles of Eastern North America. Row, Peterson & Co., Evanston, Ill. 884 pp.

Fabricius JC. 1798. Systema Eleutheratorum. I.

Fattig PW. 1948. The Chrysomelidae or leaf beetles of Georgia. Emory University Museum Bulletin 6: 1-47.

Hincks WD. 1950. Some nomenclatorial notes on Chrysomelidae. No. 3. Cassidinae. Annals of the Magazine of Natural History (Ser. 12) 3: 506-512.

Hincks WD. 1952. The genera of the Cassidinae (Coleoptera: Chrysomelidae). Transactions of the Royal Entomological Society of London 103: 327-362.

ITIS. (2010). *Plagiometriona clavata* (Fabricius, 1798). Integrated Taxonomic Information System. http://www.itis.gov/servlet/SingleRpt/SingleRpt?search_topic=TSN&search_value=720023 (18 August 2015).

Riley EG., Clark SM., Gilbert AJ. 2001. New records, nomenclatural changes, and taxonomic notes for select North American leaf beetles (Coleoptera: Chrysomelidae). Insecta Mundi, 15: 1-17.

Spaeth F. 1899. Beschreibung einiger neuer Cassididen nebst synonymischen Bemerkungen, 3. Verh. Zool.-Bot. Gesellsch. Wien 49: 213-221.

Wilcox JA. 1954. Leaf beetles of Ohio (Chrysomelidae: Coleoptera). Ohio Biological Survey Bulletin 43: 353-506.

Woodruff RE. 1965. A tortoise beetle (*Hemisphaerota cyanea* (Say)) on palms in Florida (Coleoptera: Chrysomelidae). Florida Department of Agriculture, Division of Plant Industry, Entomology Circular 35: 1-2.