

# Phoenix roebelenii: Pygmy Date Palm<sup>1</sup>

Timothy K. Broschat<sup>2</sup>

The pygmy date palm is one of the most popular small landscape palms in Florida. It is single-stemmed, but is often grown as clumps of 2–4 closely spaced individuals which, when older, give the impression of a multi-stemmed palm (Figure 1). It grows to a height of about 12 ft, with a spread of 6–8 ft. The feather-shaped (pinnate) leaves have slender petioles and basal leaflets that are modified into sharp 2–3 inch long spines. The slender, often crooked trunk varies in width from 3–6 inches and is covered with distinctive peg-like leaf bases (Figure 2). Older specimens will have a large mass of aerial root initials at the base of the trunk. Cream-colored male and female flowers are found on separate trees (dioecious) in the spring that are followed by small elongated reddish-brown fruits that turn black upon ripening.



Figure 1. Pygmy date palm  
Credits: T. Broschat



Figure 2. Trunk of pygmy date palm  
Credits: T. Broschat

Pygmy date palms are adaptable to a wide range of soil types. They are considered to be cold hardy to USDA zone 10A (30°F), but are widely grown in zone 9B (25°F). They are not tolerant of salt spray or saline soils. Most pygmy date palms in Florida exhibit potassium (K) deficiency symptoms on their oldest leaves. Symptoms are most severe towards the tips of affected leaves and appear as a yellow-orange discoloration of the leaflets and necrosis of the leaflet tips (Figure 3). Potassium deficiency also causes premature leaf death, so K-deficient palms retain fewer leaves than healthy ones. Potassium-deficient leaves, though unsightly, should not be removed until they are completely dead, as they serve as a supplementary source of K in the absence of sufficient K in the soil. Proper fertilization will

1. This document is ENH-600, one of a series of the Environmental Horticulture, UF/IFAS Extension. Original publication date November 1993. Revised August 2014. Visit the EDIS website at <http://edis.ifas.ufl.edu>.
2. Timothy K. Broschat, professor, Ft. Lauderdale REC and Environmental Horticulture Department, UF/IFAS Extension, Gainesville, FL 32611.

The Institute of Food and Agricultural Sciences (IFAS) is an Equal Opportunity Institution authorized to provide research, educational information and other services only to individuals and institutions that function with non-discrimination with respect to race, creed, color, religion, age, disability, sex, sexual orientation, marital status, national origin, political opinions or affiliations. For more information on obtaining other UF/IFAS Extension publications, contact your county's UF/IFAS Extension office.

U.S. Department of Agriculture, UF/IFAS Extension Service, University of Florida, IFAS, Florida A & M University Cooperative Extension Program, and Boards of County Commissioners Cooperating. Nick T. Place, dean for UF/IFAS Extension.

gradually increase the number of leaves in the crown. Once a fully round crown has been achieved, visible symptoms of K deficiency will also begin to disappear. Landscape palm fertilizers should have an analysis of 8-2-12 (or 8-0-12) with 100% of the nitrogen (N), K, and magnesium (Mg) in controlled release form, and micronutrients such as manganese (Mn) and iron (Fe) in water soluble (sulfate or chelate) form in order to be effective. For more information about K deficiency and fertilization of landscape palms in Florida, see EDIS publications [EP269](#) and [EP261](#).

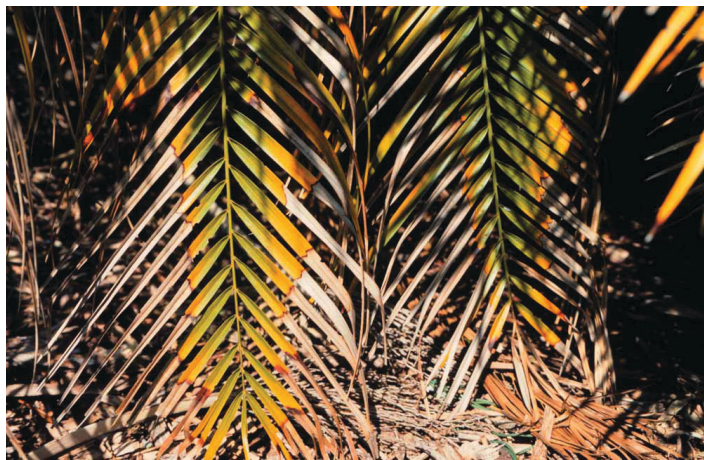


Figure 3. Potassium-deficient older leaves of pygmy date palm  
Credits: T. Broschat

Another nutrient deficiency occasionally encountered on pygmy date palms is Mg deficiency. Symptoms of Mg deficiency are similar to those of K deficiency, but differ in that Mg-deficient leaves have a broad yellow band along the outer margin of each leaf, with the center of the leaf sharply transitioning to dark green (Figure 4). Unlike potassium deficiency, magnesium deficiency does not cause leaflet tip necrosis. While K deficiency is nearly ubiquitous on pygmy date palms in Florida, Mg deficiency is usually the result of improper fertilization. Fertilizers with high N or K, but little or no Mg, applied to the palm or nearby turfgrass can result in imbalances between N and Mg or K and Mg that can result in Mg deficiency. Routine application of the fertilizer mentioned above will prevent Mg deficiencies and can be used to correct mild to moderate Mg deficiencies. For more information about Mg deficiency see EDIS publication [EP266](#).

Iron (Fe) deficiency is uncommon in pygmy date palms, but can occur on palms planted too deep or in poorly drained soils. Symptoms appear on the new leaves as a uniform chlorosis (yellowing of the leaflets). In severe chronic situations, the entire palm may be yellow-green in color. Iron deficiency is best prevented by planting at the correct depth and avoiding planting into sites with poor drainage or high water tables. Since Fe deficiency is not actually caused by

a lack of Fe in the soil, Fe fertilizers may not always be effective in treating the problem. See [Iron Deficiency in Palms EP265](#).



Figure 4. Magnesium deficiency on pygmy date palms  
Credits: T. Broschat

Manganese (Mn) deficiency is a common problem in pygmy date palms growing in alkaline soils. Symptoms begin as longitudinal necrotic streaks on slightly chlorotic leaflets (Figure 5). As the deficiency progresses, leaflet tips become withered and curled giving the leaves a frizzled appearance (Figure 6). Symptoms of Mn deficiency develop on newly emerging leaves and are most severe towards the base of those leaves. Routine fertilization with the 8-2-12 fertilizer mentioned above should prevent most Mn deficiencies, but severe cases may require supplemental applications of manganese sulfate. For more information about Mn deficiency in palms see EDIS publication [EP267](#).



Figure 5. Manganese deficiency on pygmy date palm showing necrotic streaking on leaflets  
Credits: T. Broschat

Boron (B) deficiency is fairly common on pygmy date palms. Although a wide range of symptoms are possible, the most common is the production of several spear leaves that do not open normally, if at all (Figure 7). Crumpled dark green new leaves are also occasionally produced as a result of this disorder. See [EP264](#) for more information about B deficiency in palms.

Pygmy date palms are relatively resistant to diseases, but two diseases are fairly common in this species. *Ganoderma butt rot*, a soil-borne fungal disease caused by *Ganoderma zonatum*, causes decay in the bottom couple of feet of the trunk (Figure 8). There is no control for this disease. Another common disease, particularly during cooler months, is *Pestalotiopsis leaf spot*, which causes necrotic lesions on the leaflets, rachis, and petioles (Figure 9). In severe cases, this disease can kill the palm.

Pygmy date palms are occasionally damaged by mites and insects such as mealybugs, scales, weevils, and caterpillars. Young leaves of pygmy date palms are normally covered with a whitish material (Figure. 10) that is often mistaken for a whitefly, mealybug, or scale infestation. This material drops off naturally as the leaves age.



Figure 8. *Ganoderma butt rot* of pygmy date palm showing discoloration of decayed trunk on left and healthy trunk on right  
Credits: T. Broschat



Figure 6. Manganese deficiency on pygmy date palm. Note curling or frizzling of leaflets towards the base of the leaf  
Credits: T. Broschat



Figure 9. *Pestalotiopsis leaf spot* on pygmy date palm  
Credits: T. Broschat



Figure 7. Boron-deficient pygmy date palm showing multiple unopened spear leaves  
Credits: T. Broschat



Figure 10. Naturally occurring whitish material on young leaf of pygmy date palm  
Credits: T. Broschat

## References

Broschat, T.K. 1994. Removing potassium-deficient leaves accelerates rate of decline in *Phoenix roebelenii* O'Brien. HortScience 29:823.

Elliott, M.L., T.K. Broschat, J.Y. Uchida, and G.W. Simone. 2004. Compendium of diseases and disorders of ornamental palms. Amer. Phytopathological Soc. Press, St. Paul, MN.

Meerow, A.W. 2006. Betrock's landscape palms. Betrock Information Systems, Hollywood, FL.