

A Bombardier Beetle *Pheropsophus aequinoctialis* (L.) (Insecta: Coleoptera: Carabidae)¹

Gregory Parrow and Adam Dale²

Introduction

Pheropsophus aequinoctialis (L.) is a carabid beetle in the tribe Brachinini that is native to parts of South and Central America (Frank et al. 2009). Ground beetles of this tribe are commonly referred to as bombardier beetles due to their ability to produce a powerful and hot defensive chemical spray directed at would-be predators (Ferreira and Terra 1989). This spray is capable of harming humans, resulting in discomfort, physical burns (due to the spray temperature), and possibly contact dermatitis. In rare cases, systemic reactions requiring more urgent medical attention have been reported (Pardal et al. 2016). The adults of this species (Figure 1) are nocturnal and believed to be generalist predators and scavengers. However, larval stages (Figures 2 and 3) appear to depend on an exclusive diet of mole cricket eggs (Frank et al. 2009). As such, *Pheropsophus aequinoctialis* is considered to have potential use as a biological control agent against certain invasive mole cricket pests in North America (Frank et al. 2009).

Distribution

Literature suggests that this insect was historically found primarily in north and northeastern Brazil (Ferreira and Terra 1989). Now, *Pheropsophus aequinoctialis* is reported to inhabit various countries in Central and South America, in an area spanning Mexico (Yucatán) to parts of Argentina (Jujuy province) (Frank et al. 2009). *Pheropsophus*

aequinoctialis typically inhabits riverbanks, sandbars, or in soils adjacent to bodies of freshwater, areas where *Neoscapteriscus* mole cricket species also inhabit (Frank et al. 2009).



Figure 1. Adult *Pheropsophus aequinoctialis*.
Credits: Lyle Buss, UF/IFAS

Life Cycle

Eggs

Pheropsophus aequinoctialis eggs are white in color and have an elongate profile with slightly rounded ends. When magnified, the egg's surface appears highly perforated, displaying numerous polygonal facets (Frank et al. 2009). Under laboratory conditions, eggs hatch on average 13.5 days after oviposition, and captive females have been observed laying between 5 to 83 eggs per week (Weed 2003).

1. This document is EENY-765, one of a series of the Entomology and Nematology Department, UF/IFAS Extension. Original publication date September 2020. Visit the EDIS website at <https://edis.ifas.ufl.edu> for the currently supported version of this publication. This document is also available on the Featured Creatures website at <http://entomology.ifas.ufl.edu/creatures>.
2. Gregory Parrow; and Adam Dale, assistant professor, Entomology and Nematology Department; UF/IFAS Extension, Gainesville, FL 32611.

Larvae

Larvae take approximately 10 days to develop to final instar larvae after hatching from eggs. There are three distinct larval instars for *Pheropsophus aequinoctialis* and all have a white body, an eyeless, cream colored head, and darkened mandibular (chewing) mouthparts (Figures 2 and 3) (Frank et al. 2009). However, *Pheropsophus aequinoctialis* undergoes what is known as hypermetamorphosis whereby the first and subsequent juvenile forms (instars) look markedly different from one another (beyond the typical size increase seen between molts in most immature insects). Specifically, the first instars of *Pheropsophus aequinoctialis* have longer legs and a narrower body than those of subsequent instars (Weed 2003).



Figure 2. Large larval *Pheropsophus aequinoctialis* pictured next to mole cricket eggs.

Credits: James Castner, UF/IFAS

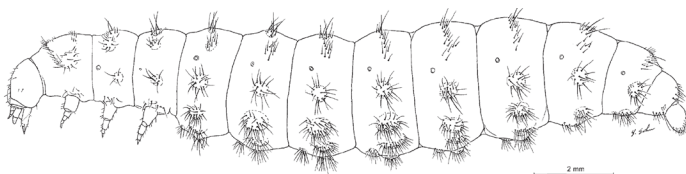


Figure 3. Habitus (left lateral aspect) of *Pheropsophus aequinoctialis*, third instar with legs shown. (Frank et al. 2009).

Credits: Creative Commons Attribution 3.0 Unported

Pupae

The pupal stage of *Pheropsophus aequinoctialis* is described as being typical of most carabid beetle species (Frank et al. 2009). As in most carabid beetles, the pupa (Figure 4) is of an exarate form whereby its appendages are free and without a cocoon covering them (Singh 2006). The total time from pupation to adult is approximately 20 days (Frank et al. 2009).

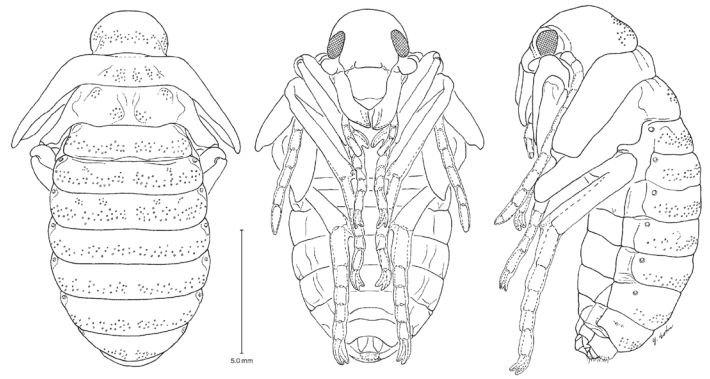


Figure 4. Pupa of *Pheropsophus aequinoctialis* (Frank et al. 2009). Credits: Creative Commons Attribution 3.0 Unported

Adults

Adults are typically between 15-20 mm long with a predominantly yellow to reddish head and body (Figure 1). The hardened wing covers (elytra) typically show two large black spots, joining along the divide (suture) where the elytra meet (Bouchard 2014).

Behavior

Adult female *Pheropsophus aequinoctialis* actively seek and deposit eggs in (or around) the burrows of mole crickets (Weed & Frank). The newly hatched first instar larva is especially mobile compared to other larval instars, which helps it search for eggs to feed on inside the mole cricket burrow egg chambers (Weed 2003). On average, juvenile *Pheropsophus aequinoctialis* have been observed consuming over 38 mole cricket eggs prior to completing development. After feeding and completing the three larval instars, juveniles will pupate in the same egg chambers where they were feeding and any successfully emerging adults must dig their way out of the soil (Weed 2003).

As adults, all beetles in the coleopteran suborder, Adephaga (of which *Pheropsophus aequinoctialis* belongs) have specialized abdominal “pygidial glands” that produce defensive compounds and help deter predators. These glands are composed of cells for secreting defensive chemicals, a pair of canals for transporting secretions, and a pair of reservoirs for storing them until released (Giglio et al. 2011). In addition, bombardier beetles have evolved internal structures including specialized valves, contracting musculature, and a hardened “reaction chamber”, among other traits. These structures enable bombardier beetles to controllably mix multiple chemical reactants within the reaction chamber, producing rapid and violent exothermic reactions, or those that release energy through heat (Giglio et al. 2015). The result is a fine mist accompanied by audible “popping” sounds emitted from the tip of the

bombardier's abdomen, which the beetle can aim like a turret in any direction (Eisner 1958, Dean et al. 1990). Most predators are instantaneously repelled or worse – the spray of bombardier beetles has been observed to also disorient, induce seizures, or cause obsessive self-grooming behavior on would-be attackers (Eisner 1958).

In terms of diet, adult *Pheropsophus aequinoctialis* is omnivorous and has been observed feeding on various insects, fruits, and vegetation. However, juveniles appear to be entirely dependent upon a diet of mole cricket eggs for survival. As evidence of this dependency, researchers attempting to rear the beetle under laboratory conditions found that newly hatched *Pheropsophus aequinoctialis* larvae would only initiate feeding when located within a sandy cell or pit that mimicked a mole cricket chamber (Frank et al. 2009). Some have speculated that adult female beetles are guided in egg laying towards mole crickets by detecting possible cues from the tunnels (Weed 2003), which if true, would further demonstrate the beetle's larval dependence upon mole crickets.

Economic and Environmental Importance

In its native range, *Pheropsophus aequinoctialis* is not considered a pest or otherwise economically important. However, releasing *Pheropsophus aequinoctialis* beyond its native habitat has been proposed as a potential biological control tactic, particularly in the southeastern United States where three invasive mole cricket species are considered damaging pests to the cattle and turfgrass industries (Walker & Nickle 1981). Three other biological control agents were introduced to control these pests and have largely been considered a success (Parkman et al. 1996; Frank et al. 2006; Mhina et al. 2016). The Mole Cricket Biological Control Program (MCBCP) at the University of Florida considered *Pheropsophus aequinoctialis* as a potential biological control tool, but the program ended before researchers were able to reach conclusions about the beetle's potential impact on non-target organisms.

Another reason *Pheropsophus aequinoctialis* was never released is due to concerns about impacts on a native mole cricket species. The northern mole cricket (*Neocurtilla hexadactyla*), is native to the eastern United States and not considered a pest (Frank et al. 2009). The eggs of this mole cricket species were shown in laboratory conditions to be a successful diet for *Pheropsophus aequinoctialis* larvae, generating concern that it could be attacked in the wild. However, unlike mole crickets in the genus *Neoscapteriscus*,

adult female *Neocurtilla* mole crickets are thought to actively monitor and defend their egg clutches, a trait that might reduce risks associated with introducing *Pheropsophus aequinoctialis* into the mole cricket's natural range (Frank et al. 2009). Aside from concerns about the beetle's effects on the northern mole cricket, *Pheropsophus aequinoctialis* adults were also found to be phoretic carriers of nematodes, mites, and fungi, which raised concerns about potential ancillary introductions of other exotic organisms (Frank et al. 2009). Risks associated with accidentally introducing an invasive pest (or associated pathogen) by way of *Pheropsophus aequinoctialis* warrants further research before using the beetle as a biological control agent in the United States. Still, other biological control organisms (e.g. *Steinernema scapterisci*, *Larria bicolor*) released under the MCBCP have established self-sustaining populations and saved Florida's cattle industry an estimated \$13 million annually since their establishment (Mhina et al. 2016). One possible advantage of using *Pheropsophus aequinoctialis* is that its natural riverine/water habitat may allow pest managers to avoid pesticides in these areas, which can pose risks to aquatic life (Frank et al. 2009). Therefore, *Pheropsophus aequinoctialis* may have additional untapped economic benefits to supplement existing mole cricket control programs.



Figure 5. From left to right: northern mole cricket (*Neocurtilla hexadactyla*), short winged mole cricket (*Neoscapteriscus abbreviatus*), tawny mole cricket (*Neoscapteriscus vicinus*), and southern mole cricket (*Neoscapteriscus borellii*).

Credits: Lyle Buss, UF/IFAS

Selected References

- Bouchard P., V. E. Arthur, and L. T. Stephane. 2014. *The Book of Beetles: A Life-size Guide to Six Hundred of Nature's Gems*. Chicago, IL: University of Chicago Press.
- Dean J., D. J. Aneshansley, H. E. Edgerton, and T. Eisner. 1990. "Defensive spray of the bombardier beetle: A biological pulse jet." *Science* 248 (4960): 1219–1221.

- Ferreira C., and W. Terra. 1989. "Spatial organization of digestion, secretory mechanisms and digestive enzyme properties in *Pheropsophus aequinoctialis* (Coleoptera: Carabidae)." *Insect Biochemistry* 19:383–391.
- Frank J. H., and T. J. Walker. 2006. "Permanent control of pest mole crickets (Orthoptera: Gryllotalpidae: *Scapteriscus*) in Florida." *American Entomologist* 52 (3): 138–144.
- Frank J. H., T. L. Erwin, and R. C. Hemenway. 2009. "Economically beneficial ground beetles. The specialized predators *Pheropsophus aequinoctialis* (L.) and *Stenaptinus jessoensis* (Morawitz): Their laboratory behavior and descriptions of immature stages (Coleoptera: Carabidae: Brachininae)." *ZooKeys* 14:1–36.
- Giglio A., P. Brandmayr, F. Talarico, and T. Z. Brandmayr. 2011. "Current knowledge on exocrine glands in carabid beetles: structure, function and chemical compounds." *ZooKeys* 100:193–201.
- Giglio A., M. Muzzi, and R. Romani. 2015. "Functional anatomy of the explosive defensive system of bombardier beetles (Coleoptera, Carabidae, Brachininae)." *Arthropod Structure and Development* 44:468–490.
- Mhina G. J., N. C. Leppla, M. H. Thomas, and D. Solis. 2016. "Cost effectiveness of biological control of invasive mole crickets in Florida pastures." *Biological Control* 100:108–115.
- Pardal P. P., C. T. Silva, W. M. Monteiro, and M. A. Gadelha. 2016. "Dermatitis after contact with *Pheropsophus* sp (Coleoptera, Carabidae, Brachininae) in the Pará State, Brazilian Amazon." *Revista da Sociedade Brasileira de Medicina Tropical* 49:799–801.
- Parkman J. P., J. H. Frank, T. J. Walker, and D. J. Schuster. 1996. "Classical biological control of *Scapteriscus* spp. (Orthoptera: Gryllotalpidae) in Florida." *Environmental Entomology* 25:1415–1420
- Singh R. 2006. Post embryonic development. P. 170 In Singh R. Elements of Entomology. Rastogi Publications. Meerut India.
- Walker T. J., and D. A. Nickle. (1981). "Introduction and spread of pest mole crickets: *Scapteriscus vicinus* and *S. acletus* reexamined." *Annals of the Entomological Society of America* 74:158–163
- Weed A. S., and J. H. Frank. 2005. "Oviposition behavior of *Pheropsophus aequinoctialis* L. (Coleoptera: Carabidae): A natural enemy of *Scapteriscus* mole crickets (Orthoptera: Gryllotalpidae)." *Journal of Insect Behavior* 18:707–723.
- Weed A. S. 2003. Reproductive strategy of *Pheropsophus aequinoctialis* L.: Fecundity, fertility, oviposition behavior; and influence of mole cricket egg chamber depth on larval survival. MS thesis. Gainesville: University of Florida Institute of Food and Agricultural Sciences.