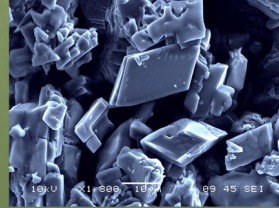


Pesticide Formulations

PRESSURIZED AEROSOL



PESTICIDE PRODUCTS are formulated with a mix of active ingredients and inert, or inactive, ingredients. Pesticide concentrates must be diluted before use. Ready-to-use pesticides require no dilution.



Closeup of microencapsulated concentrate

LIQUIDS



EC: Emulsifiable Concentrate
 SC: Suspensible Concentrate
 ME: Microencapsulated Concentrate
 CS: Capsulated Suspension
 S: Solution

DRY PRODUCTS



WP: Wettable Powder
 SP: Soluble Powder
 WG: Wettable Granule



D: Dust
 G: Granule



BAITS



Liquid bait
 Gel bait
 Granular bait



Granular bait on a fire ant mound

Your job is to:

- ▶ Select the correct formulation for the job.
- ▶ Correctly handle and apply the formulation.