

# Graphic File Formats<sup>1</sup>

Ricky Telg<sup>2</sup>

This publication on graphic file formats is the fourth of a five-part series on document design. This series also covers the document design process, principles of document design, elements of document design, and brochure and newsletter design.

## Introduction

When designing documents, you also have to be aware of the different types of images you may receive. This publication provides an overview of raster graphics and vector graphics.

## Raster Graphics

**Raster graphics** are images made up of **pixels** (picture elements), most notably as photographs. Raster graphics are limited in their size and shape and are linked to the image's **resolution**, a measurement of how closely packed the pixels are together in the image. Resolution is usually measured as *pixels per inch (ppi)*.

Because raster graphics are tied to resolution, they limit modification. Resizing, also known as **scaling**, is a particular problem. If you stretch a small raster graphic to make it larger, each original pixel is actually spread out, leading to a distorted, jagged look known as *pixelation*. Raster graphics intended for print should have a higher resolution, usually around 300 ppi. Raster graphics for screen view purposes (e.g., tablets, computer monitors/laptops, and smartphones)

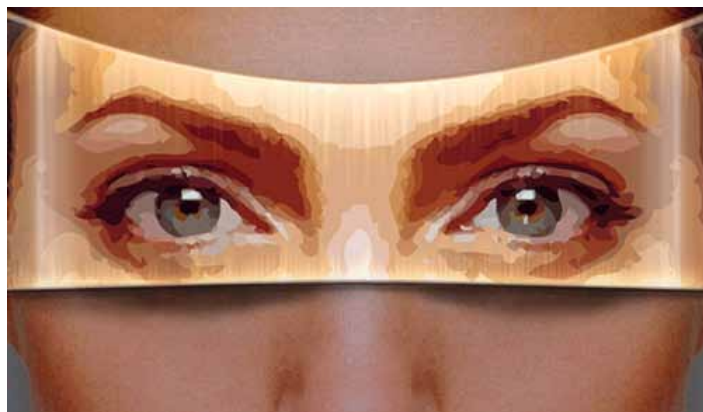


Figure 1. Raster graphic with vector overlay.

Credits: Chris Wilcox, CC BY-NC-ND 2.0, <http://flic.kr/p/51nnpn>

and not intended for print will often have a relatively low resolution by comparison, ranging from 72 to 100 ppi on average. Because of the higher resolution needed for print versions of raster graphics, the file sizes tend to be large. Raster graphics are usually in one of the following graphic file formats: TIFFs, JPEGs, or GIFs.

### .tiff/.tif

TIFF stands for Tagged Image File Format. A file format that can be read by most graphics programs, the TIFF is commonly used in publishing and document programs. A TIFF is a large file, and because it is less compressed than other file formats such as JPEGs, a TIFF provides high-resolution imaging.

1. This document is WC130, one of a series of the Department of Agricultural Education and Communication, Florida Cooperative Extension Service, Institute of Food and Agricultural Sciences, University of Florida. Original publication date June 2012. Visit the EDIS website at <http://edis.ifas.ufl.edu>.
2. Ricky Telg, professor, Department of Agricultural Education and Communication, Institute of Food and Agricultural Services, University of Florida, Gainesville, FL 32611.

The use of trade names in this publication is solely for the purpose of providing specific information. UF/IFAS does not guarantee or warranty the products named, and references to them in this publication do not signify our approval to the exclusion of other products of suitable composition.

The Institute of Food and Agricultural Sciences (IFAS) is an Equal Opportunity Institution authorized to provide research, educational information and other services only to individuals and institutions that function with non-discrimination with respect to race, creed, color, religion, age, disability, sex, sexual orientation, marital status, national origin, political opinions or affiliations. U.S. Department of Agriculture, Cooperative Extension Service, University of Florida, IFAS, Florida A&M University Cooperative Extension Program, and Boards of County Commissioners Cooperating. Millie Ferrer-Chancy, Interim Dean

## .jpg/.jpeg

The term JPEG was created by the Joint Photographic Experts Group to describe a method used to reduce digital image file size in varying degrees with minimal component loss. A JPEG image is a compressed file, meaning that some information is discarded. Many digital cameras capture photographs in the JPEG format. Indeed, JPEG is the most common file format for photographic images today, especially those shown on Web pages.

## .gif

GIF stands for Graphics Interchange Format. GIF files are extremely small file sizes because they can only use a maximum of 256 colors. GIFs are used for creating line art (logos, diagrams, etc.) for the Web. GIFs are unsuitable for print documents because their resolution is so low.

For publishing printed documents, photographs should be saved in the TIFF format. For photographs that will go on the Web or television, use JPEG.

## .png | .raw

Two other graphic file formats are PNG and RAW. These are not as common as TIFF, JPG, and GIF files. PNG stands for Portable Network Graphics. PNG is a compressed format designed as an alternative to GIF. It can be used for line art and photographs; therefore, it is more versatile. However, PNG has not caught on with graphic designers and is generally not widely used. RAW is designed to capture images from digital cameras. The files are large, and the quality of the photographs is high. Images captured in RAW are usually resaved as TIFF or JPG files during the document design process.

## Vector Graphics

**Vector graphics** are images composed of mathematically defined shapes created by using illustration programs such as CorelDRAW® or Adobe® Illustrator®. Usually vector graphics consist of drawings, such as lines, curves, and geometric shapes. Raster graphics describe every pixel in the graphic whereas vector graphics use mathematical algorithms to describe the lines, shapes, patterns, and colors of drawing objects.

As shown in **Figure 2**, vector graphics can be resized (scaled) without looking pixilated. Vector graphics work best for drawing images with sharp edges and consistent areas of color, such as line art, diagrams, maps, and statistical graphics. The file format most commonly associated with vector graphics is the *EPS*, meaning Encapsulated

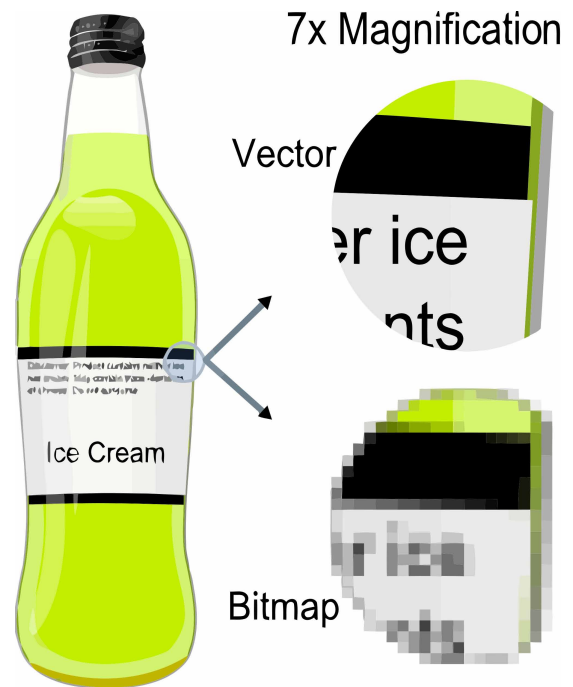


Figure 2. Example showing effect of vector graphics versus raster graphics. The original vector-based illustration is at the left. The upper-right image illustrates magnification of 7x as a vector image. The lower-right image illustrates the same magnification as a raster (bitmap) image. Raster images are based on pixels and thus scale with loss of clarity, while vector-based images can be scaled indefinitely without loss of quality.

Credits: Darth Stabro/Wikimedia Foundation, CC BY-SA 3.0

PostScript. Resolution is not an issue with an EPS file unless raster effects have been added.

## Additional Information

Diggs-Brown, B., & Glou, J. (2004). *The PR styleguide: Formats for public relations practice*. Belmont, CA: Wadsworth.

Kimball, M. A., & Hawkins, A. R. (2008) *Document design: A guide for technical communicators*. Boston, MA: Bedford/ St. Martin's.

Marsh, C., Guth, D. W., & Short, B. P. (2005) *Strategic writing: Multimedia writing for public relations, advertising, sales and marketing*. Boston, MA: Pearson Education.

Telg, R., & Irani, T. A. (2012). *Agricultural communications in action: A hands-on approach*. Clifton Park, NY: Delmar.