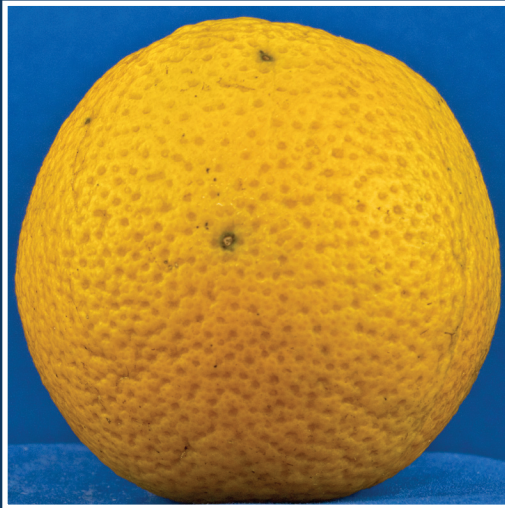


# Identification of Early Citrus Black Spot Symptoms

## Identificación de los Síntomas Iniciales de la Mancha Negra de los Cítricos

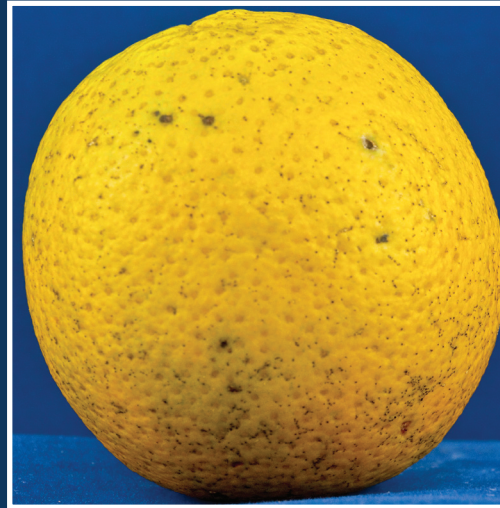
M.M. Dewdney, J.D. Yates, and M.A. Ritenour



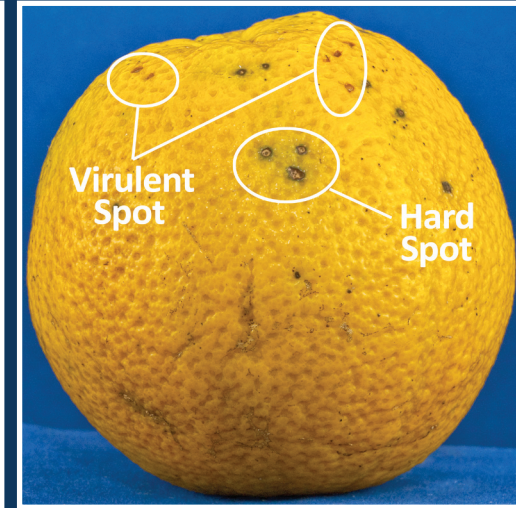
**Hard Spot**  
Manchas o puntos duros



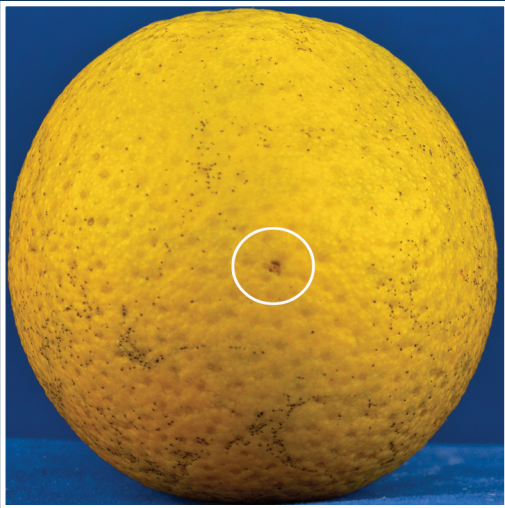
**Hard Spot**  
Manchas o puntos duros



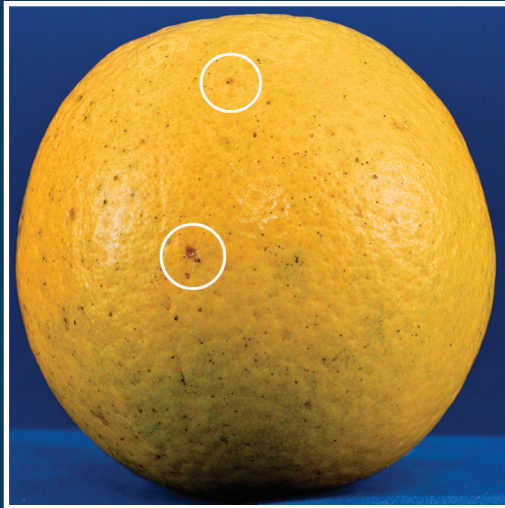
**Hard Spot**  
Manchas o puntos duros



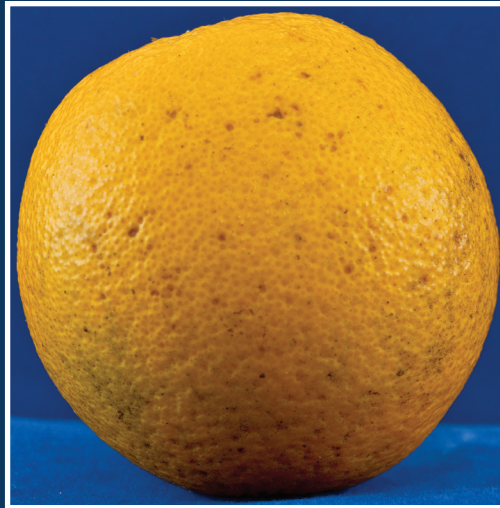
**Hard Spot and Virulent Spot**  
Manchas o puntos duros y  
Mancha virulenta



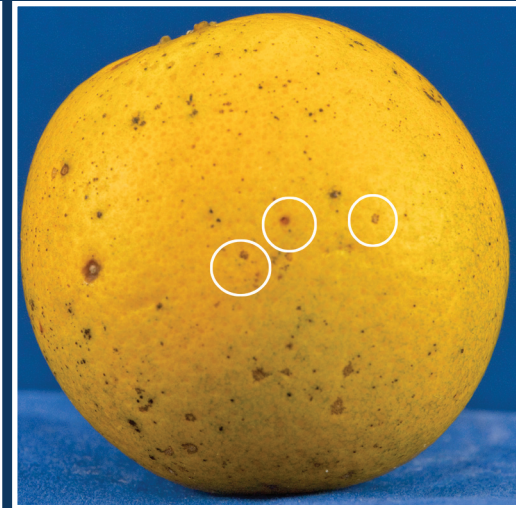
**Virulent Spot**  
Mancha virulenta



**Virulent Spot**  
Mancha virulenta



**Virulent Spot**  
Mancha virulenta



**Virulent Spot**  
Mancha virulenta

<sup>1</sup>This document is PP285, one of a series of the Plant Pathology Department, Florida Cooperative Extension Service, Institute of Food and Agricultural Sciences, University of Florida. Original publication date July 2011. Visit the EDIS website at <http://edis.ifas.ufl.edu>

<sup>2</sup>Megan M. Dewdney, assistant professor, Department of Plant Pathology, Citrus REC, Lake Alfred, Florida; Jamie Yates, coordinator, Canker, HLB, and Exotic Diseases Extension Education, Citrus REC, Lake Alfred, Florida; and Mark A. Ritenour, associate professor, Department of Horticultural Sciences, Indian River REC, Ft. Pierce, Florida; Cooperative Extension Service, Institute of Food and Agricultural Sciences; University of Florida; Gainesville, FL 32611.