

# Peach Brown Rot<sup>1</sup>

Ali Sarkhosh, Shirin Shahkoomahally, Logan Marie Richmond-Cosie, and Philip Harmon<sup>2</sup>

## Introduction, Host Range, and Distribution

Brown rot, caused by *Monilinia* spp., is one of the most economically harmful fungal diseases for peach and other stone fruit growers worldwide. Four *Monilinia* species have been found to cause brown rot. *M. fructigena* and *M. laxa* are two of the most common species found in Europe. *Monilinia polystroma*, an anamorphic species closely related to *M. fructigena*, has been described only in Japan. *M. fructicola* occurs in North and South America, Japan and much of Asia, Australia, and Europe (a more updated distribution can be found at <https://gd.eppo.int/taxon/MONIFC/distribution>). In North America, *M. fructicola* and *M. laxa* are the leading causal species of brown rot, blossom blight, and fruit rot in stone fruits (Martínez-García et al. 2013).

Brown rot fungus has the ability to attack blossoms, fruit, spurs (flower- and fruit-bearing twigs), and small branches under favorable conditions in the spring. Disease severity is dependent upon environmental conditions. Blossom blight can be expected in humid, rainy weather with mild daytime temperatures (68°F–77°F; 20°C–25°C) and cool nights. Mature fruit rot occurs at high temperatures in conjunction with high humidity. Under the right conditions, the entire tree's crop can be completely rotted. Fruit susceptibility fluctuates with the various stages of development; mature

fruits are highly susceptible to disease, and fruit infection has the greatest impact on production (Figure 1).

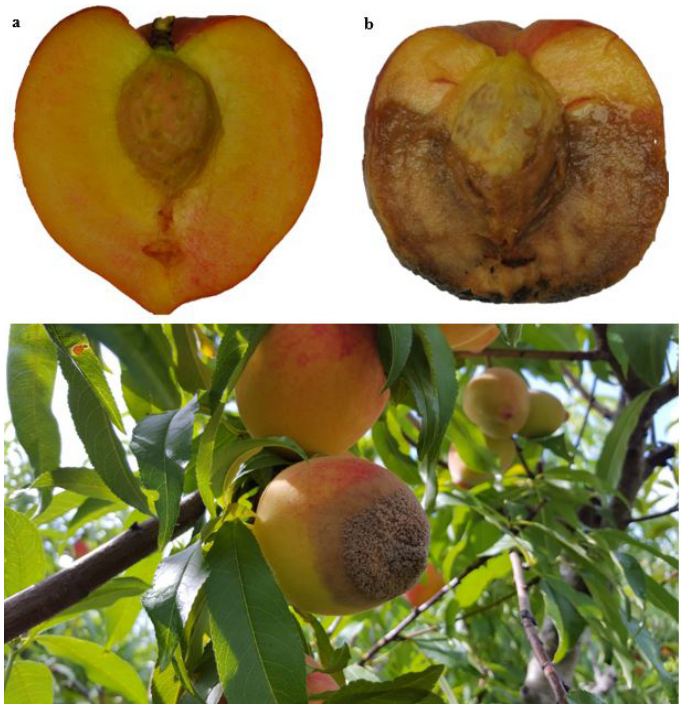


Figure 1. Brown rot on peach fruits cv. 'UFSun'; a) noninfected fruit, b) infected fruit.

Credits: D. Huff & A. Sarkhosh, UF/IFAS

1. This document is HS1357, one of a series of the Horticultural Sciences Department, UF/IFAS Extension. Original publication date February 2020. Visit the EDIS website at <https://edis.ifas.ufl.edu> for the currently supported version of this publication.
2. Ali Sarkhosh, assistant professor and Extension specialist; Shirin Shahkoomahally, graduate student; Logan Marie Richmond-Cosie, undergraduate student, Horticultural Sciences Department; and Philip Harmon, professor and Extension specialist, Plant Pathology Department; UF/IFAS Extension, Gainesville, FL 32611

The use of trade names in this publication is solely for the purpose of providing specific information. UF/IFAS does not guarantee or warranty the products named, and references to them in this publication do not signify our approval to the exclusion of other products of suitable composition. All chemicals should be used in accordance with directions on the manufacturer's label.

The Institute of Food and Agricultural Sciences (IFAS) is an Equal Opportunity Institution authorized to provide research, educational information and other services only to individuals and institutions that function with non-discrimination with respect to race, creed, color, religion, age, disability, sex, sexual orientation, marital status, national origin, political opinions or affiliations. For more information on obtaining other UF/IFAS Extension publications, contact your county's UF/IFAS Extension office. U.S. Department of Agriculture, UF/IFAS Extension Service, University of Florida, IFAS, Florida A & M University Cooperative Extension Program, and Boards of County Commissioners Cooperating. Nick T. Place, dean for UF/IFAS Extension.

## Host Range and Distribution in Florida

Brown rot disease can occur on all stone fruit cultivars grown in Florida, including peaches, nectarines, and plums. Early-maturing varieties and natives can serve as sources of inoculum for later-maturing fruit cultivars (Bush et al. 2015).

Within the state of Florida, brown rot has historically been most problematic in the Panhandle and northernmost counties, with sporadic problems in central Florida. The likelihood of disease occurring each year and the severity of epidemics that occur generally decrease through the southernmost production areas. In Gainesville, the disease is common on dooryard peaches and plums but may occur after the early commercial harvest; however, when conditions are favorable for disease, losses can be severe.

## Disease Cycle

### Overview

*Primary Inoculum*—starts the epidemic each season after a period of no disease activity

The most important sources of primary inoculum are mummified fruit on the ground that produce the sexual ascospores of the pathogen, and twig cankers that produce asexual conidia. These ascospores and conidia infect blossoms, causing a blossom blight that progresses into a twig blight and canker.

*Secondary Inoculum*—produced during the epidemic within a season, resulting in additional cycles of infection throughout the disease progression.

The most important sources of secondary inoculum early in the season include additional crops of conidia produced on the initially blighted blossoms and twigs. Conidia infect and also are produced on green fruit (usually wounded green fruit) and mature fruit later in the season. Conidia produced on fruit serve as inoculum for additional cycles of fruit and twig infections through the end of harvest as well as cycles of postharvest fruit rot during storage.

Infected fruit and twig cankers that remain in the field then restart the epidemic the following season.

### Pathogen Survival

Brown rot fungus (*M. fruticola*) has the ability to overwinter on fruit mummies still attached to the tree, in infested crop debris on the ground surrounding the tree, and in twig

cankers. Tiny mushroom structures (apothecia) may grow from the fruit mummies that have fallen to the ground and produce ascospores. Ascospores will generate for two weeks; afterward, the apothecia no longer contribute to the spread of infection. Apothecia may not be produced every year; however, conidia are. Conidia can arise on all overwintered, infected tissues, including fruit mummies and branch cankers. Spore formation of the fungus is favored by moderate temperatures (68°F–77°F; 20°C–25°C) and wet, humid weather.

### Pathogen Dissemination

Spread of fungal spores to unaffected sites is carried out by wind and rainsplash. Insects, such as honeybees or beetles, may also transport the fungal inoculum to new infection sites. Early in the season, ascospores are carried primarily by wind from the fruit mummies at the soil level to the open or unopened blossoms and young shoots. Ascospores are forcibly discharged into the air by the slightest physical disturbance (Trial 2007).

### Infection Process

The fungus requires free water to germinate and infect plant tissues. This water may come from rainfall, irrigation, or dew. Plant materials must remain wet for 3–5 hours to initiate fruit infection. Fruits that have been injured by insects, hail, or grower maintenance are more susceptible because these wounds allow direct access by the fungus to the fruit (Ellis 2018).

Infection can occur over a broad range of temperatures (32°F to 86°F; 0°C–30°C), with an optimum temperature range of 72°F to 77°F (22°C–25°C). However, if plant material remains wet for 24 hours or more, brown rot fungus infection is most likely to occur, regardless of the air temperature (Bush et al. 2015).



Figure 2. Peach mummies are the most significant source of overwintering brown rot fungal inoculum.  
Credits: P. Harmon, UF/IFAS

Wilting and powdery masses of secondary asexual spores called conidia will be observed on the flower shuck on infected blossoms. The infection can spread from the flower, into the spur, then the twig, where it will form a canker. Conidia will continue to be produced throughout the early summer from these cankers. Conidia can infect blossoms, green twigs, and green through fully ripe fruit.



Figure 3. The overwintering structure (apothecia) of the brown rot fungus, which is growing on a fruit mummy.

Credits: D. F. Ritchie, North Carolina State University

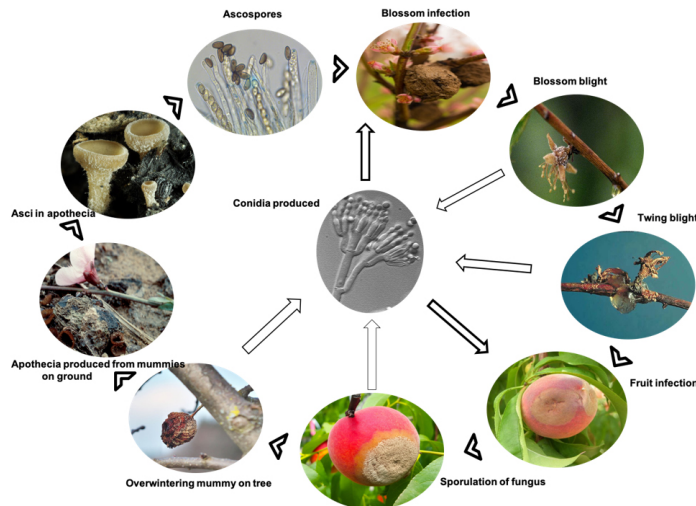


Figure 4. Brown rot disease cycle on peach.

Credits: S. Shahkoomahally, UF/IFAS

## Symptoms

Brown rot damage is easily observed on fruit, blossoms, and shoots. Infected blossoms will wilt and turn brown in color. Tan-gray tufts of masses of conidia will form on the outside of the flower shuck (Figure 5).

Infected shoots will develop sunken, brown, elliptical cankers that may become gooey in nature (gummosis). Cankers will typically form on new shoots as the disease progresses from infected blossoms. The canker has the

potential to girdle and kill a shoot, resulting in twig blight. At this point, the leaves on the blighted twig will wilt and turn brown, but they can remain attached to the branch for a few weeks (Bush et al. 2015).



Figure 5. Blighted blossom and shoot and twig canker on a peach tree.

Credits: J. W. Pscheidt, Oregon State University

Young, immature fruits are susceptible to infection, but infections remain dormant, and symptoms do not typically develop until fruits near maturity. Fruits become more susceptible to infection as they mature. The first symptoms on mature fruit will appear as soft, brown spots that can quickly engulf the entire fruit (Figure 6). These spots will expand and produce spores (conidia) until covered in a powdery, tan mass. If allowed to come into contact with other plant material, these spores can cause the death of other branches (Beckerman 2015). Infected fruits will decay and shrivel until brown to black in color, either detaching from the tree or remaining attached (Biggs et al. 1995).



Figure 6. Early infections of the fungus that causes brown rot to appear as soft, brown spots.

Credits: D. Huff, UF/IFAS



Figure 7. The brown rot fungus is sporulating on a mature peach.  
Credits: P. Harmon, UF/IFAS

## Management

### Cultural Control

Proper sanitation procedures are imperative to protecting the crop. Removal of fruit mummies (left intact on the tree or found on the ground) and other infected plant debris from the field will decrease the overwintering fungal inoculum. Sanitation measurements can be done from harvest in winter months to bloom. Mummies from any wild or neglected stone fruit trees adjacent to production fields should be removed as well (Obi et al. 2018).

Weak, dead, and cankered branches and twigs should be pruned throughout the winter and spring. Pruning the canopy to create more space between branches can help reduce inoculum by increasing sunlight and airflow. The use of microjet irrigation versus rain/overhead irrigation is recommended to avoid wetting fruits, flowers, branches, and twigs (Rungjindamai et al. 2014). Opening the canopy can improve chemical treatment coverage overall, which will show better results as well as use resources more effectively. Thinning fruits along the branch is extremely important because fruits making contact with each other show a higher incidence of infection due to increased contact with inoculum. Fruits that appear stunted should be thinned as well to remove another possible source of inoculum (Bush et al. 2015). Follow UF/IFAS recommendations to avoid excess nitrogen fertilizer, because too much nitrogen can lead to the greater susceptibility of the tree to disease (Byrne et al. 2012).



Figure 8. Without proper management, losses from brown rot infection can be 100 percent.

Credits: D. Huff, UF/IFAS

## Chemical Control

Several fungicides are labeled for management of brown rot, and all must be applied before brown rot is found (Table 1).

Ideally, fungicide applications should begin at bloom and continue through harvest. Brown rot severity can vary from growing season to growing season, but when frequent rainfall is experienced during bloom and before harvest, disease is more likely and preventative treatments become more important to prevent fruit rot. In most years, and on farms that have had brown rot problems in the past, the most important applications of fungicides are made two weeks and again one week before harvest. If disease is active on the farm, fungicides may be needed at three weeks, two weeks, and one week before harvest and may need to be continued through harvest. It is exceptionally important to follow label instructions for all pesticides.

Fungicide resistance is a concern when managing brown rot. Populations of the pathogen in the Southeast have been documented to become resistant to several fungicide classes with site-specific modes of action (MOA). MOA classes are numbered and products with the same MOA code in Table 1 belong to the same group or class. Overapplication of products within a class can speed the development of resistance, resulting in the loss of that class as a disease management tool for brown rot on a farm or in a region. Current fungicide-resistance management recommendations include employing rotations of products from different site-specific classes and using tank mixes of multisite fungicide products with site-specific products.

The current status of fungicide resistance within populations of the brown rot pathogen in Florida is largely unknown; however, resistance is monitored in populations in the Carolinas and Georgia. The resistance information

below was summarized from the *Southeastern Peach, Nectarine, and Plum Management Guide* (Blaauw et al. 2019).

Brown rot fungus is resistant to MOA code 1 fungicides (Topsin-M) and moderately resistant to MOA code 3 fungicides (propiconazole [Tilt], fenbuconazole [Indar], tebuconazole [Orius], and MOA code 3 generics). MOA code 3 fungicides are still important fungicides for brown rot control. Other important brown rot fungicides include the MOA code 11 fungicide azoxystrobin (Abound), as well as other code 11 fungicides in premixed combinations with MOA code 7 fungicides. Pristine, Merivon, and Luna Sensation contain different FRAC 7 and 11 actives. Premixes and the standalone MOA code 7 fungicide penthiopyrad (Fontelis) are highly effective options for brown rot management.

## Management of Brown Rot in Organic Production

Due to the wet and humid climate in Florida, organic production of peaches in Florida is difficult. Also, because insect feeding can wound fruit and spread spores of brown rot fungi, brown rot management in organic production involves the integration of cultural practices, including orchard sanitation, pruning, thinning, and removing cankers and mummified fruits. Organic growers can use three applications of sulfur (lime sulfur) before the petals are open (at the pink stage), at petal drop, and at sepal drop, at seven-day intervals, respectively. Apply ½ to 1¼ gallons of product per 100 gallons of water. Do not apply more than 46 gallons of Lime Sulfur ULTRA product (136.5 lb of calcium polysulfide) per acre per year ([https://orcalinc.com/assets/uploads/2018/11/Lime\\_Sulfur\\_ULTRA1e\\_Label.pdf](https://orcalinc.com/assets/uploads/2018/11/Lime_Sulfur_ULTRA1e_Label.pdf)).

## References

Beckerman, J. 2015. *Brown Rot on Tree Fruit in the Home Orchard*. BP-45-W. West Lafayette: Purdue University. <https://www.extension.purdue.edu/extmedia/BP/BP-45-W.pdf>

Biggs, A. R., K. D. Hickey, and K. S. Yoder. 1995. "Peach and Nectarine Brown Rot." In *Mid-Atlantic Orchard Monitoring Guide*, edited by H. W. Hogmire. NRAES-75. Ithaca, NY: Northeast Regional Agricultural Engineering Service, Cooperative Extension. <https://hdl.handle.net/1813/67145>

Blaauw, B., P. Brannen, D. Lockwood, G. Schnabel, and D. Ritchie (eds.). 2019. *Southeastern Peach, Nectarine,*

*and Plum Management Guide*. Bulletin 1171. Athens, GA: University of Georgia College of Agricultural and Environmental Sciences. [https://secure.caes.uga.edu/extension/publications/files/pdf/B%201171\\_12.PDF](https://secure.caes.uga.edu/extension/publications/files/pdf/B%201171_12.PDF)

Bush, E. A., K. S. Yoder, and A. H. Smith. 2015. *Brown Rot on Peach and Other Stone Fruits*. 450-721. Blacksburg: Virginia Cooperative Extension.

Byrne, D. H., M. B. Raseira, D. Bassi, M. C. Piagnani, K. Gasic, G. L. Reighard, M. A. Moreno, and S. Pérez. 2012. "Peach." In *Fruit Breeding: Handbook of Plant Breeding*, edited by M. L. Badenes, and D. H. Byrne. 505-570. Boston: Springer.

Diver, S., and T. Mumma. 2003. "Organic and Low-Spray Peach Production." IP047/35. Appropriate Technology Transfer for Rural Areas.

Ellis, M. A. 2018. *Brown Rot of Stone Fruits*. PLPATH-FRU-29. Columbus: The Ohio State University College of Food, Agricultural, and Environmental Sciences. <https://ohioline.osu.edu/factsheet/plpath-fru-29>

Martínez-García, P. J., D. E. Parfitt, R. M. Bostock, J. Fresnedo-Ramírez, A. Vazquez-Lobo, E. A. Ogundiwin, T. M. Gradziel, and C. H. Crisosto. 2013. "Application of Genomic and Quantitative Genetic Tools to Identify Candidate Resistance Genes for Brown Rot Resistance in Peach." *PLOS ONE* 8 (11): e78634. <https://doi.org/10.1371/journal.pone.0078634>

Obi, V. I., J. Barriuso, and Y. Gogorcena. 2018. "Peach Brown Rot: Still in Search of an Ideal Management Option." *Agriculture* 8: 125. <https://doi.org/10.3390/agriculture8080125>

Rungjindamai, N., P. Jeffries, and X. M. Xu. 2014. "Epidemiology and Management of Brown Rot on Stone Fruit Caused by *Monilinia laxa*." *Eur. J. Plant Pathol.* 140: 1-17. <https://doi.org/10.1007/s10658-014-0452-3>

Trial, F. 2007. "Fungal Cannons: Explosive Spore Discharge in the Ascomycota." *FEMS Microbiology Letters*. 276: 12-18. <https://doi.org/10.1111/j.1574-6968.2007.00900.x>

Yáñez-Mendizábal, V., H. Zerriouh, I. Viña, R. Torres, J. Usall, A. deVicente, A. Pérez-García, and N. Teixidó. 2012. "Biological Control of Peach Brown Rot (*Monilinia* spp.) by *Bacillus subtilis* CPA-8 Is Based on Production of Fengycin-like Lipopeptides." *Eur. J. Plant Pathol.* 132: 609-619. <https://doi.org/10.1007/s10658-011-9905-0>

Table 1. Preharvest recommended fungicide product, rate, and timing information for low, moderate, and high brown rot pressure in Florida. (Adapted for this publication from Blaauw et al. 2019)

Severity	Time	Fungicide	Formulated product/acre	EFFECTIVENESS <sup>2</sup>	REI/PHI	Remarks
Low brown rot pressure	21 days preharvest	Captan MOA M4 (Captan 50W or Captec 4L)	5–8 lb 2.5–4 qt	+++	24 hrs/0 days	<p>Captan use is sometimes associated with inking and other skin discolorations when applied preharvest during wet, slow-drying conditions. Skin discoloration is less likely to occur if captan use ceases 40 days before harvest. Risk of captan-associated inking is greatest within 20 days of harvest. Captan is a severe eye irritant.</p> <p>Where fruit skin discoloration is a concern, the Abound plus Topsin-M tank mix in this 21-day preharvest application may be an option for orchards that do not have a history of MBC resistance.</p> <p>Reentry and preharvest intervals for Abound &amp; Topsin-M tank mixes are bound by the more cautious Topsin-M Intervals (2 days/1 day).</p> <p>Use Topsin-M only once a year. If you have used it already during bloom, do not use it again preharvest.</p> <p>The fungicide Protocol (premixture of thiophanate methyl plus propiconazole) is registered for brown rot control but not listed because resistance to both components is present in the Southeast, and we want to avoid selection of dual-resistant isolates.</p> <p>Quadris Top (difenoconazole (FRAC 3) plus azoxystrobin (FRAC 11)) premixture is registered but not listed for brown rot control to avoid unnecessary selection for FRAC 11 fungicide resistance in anthracnose fungi during preharvest sprays (FRAC 11s are already used in 7 and 11 combinations and should not also be used in combination with FRAC 3s when rotating).</p>
		azoxystrobin MOA 11 plus thiophanate-methyl MOA 1 (Abound 2.08F plus Topsin-M 70W,WSB,WDG)	10 fl oz plus 0.75 lb	++++	4 hrs/0 days 2 days/1 day	

Severity	Time	Fungicide	Formulated product/acre	EFFECTIVENESS <sup>2</sup>	REI/PHI	Remarks
<b>Low brown rot pressure</b>	14 days preharvest	pyraclostrobin MOA 11 plus boscalid MOA 7 (Pristine 38W)	10.5–14.5 oz	+++++	12 hrs/0 days	
		pyraclostrobin MOA 11 plus fluxapyroxad MOA 7 (Merivon)	4.0–6.7 fl oz	+++++	12 hrs/0 days	
		trifloxystrobin MOA 11 plus fluopyram MOA 7 (Luna Sensation)	5.0–7.6 fl oz	+++++	12 hrs/0 days	
		fluopyram (Luna Privilege)	4.0–6.8 fl oz	++++	12 hrs/0 days	
		penthiopyrad (Fontelis)	14–20 fl oz	++++	12 hrs/0 days	
	1–7 days preharvest	MOA 3 propiconazole (Bumper 41.8EC Tilt)	4 fl oz	++++	24 hrs/0 days	
		flutriafol MOA 3 (Topguard SC)	14 fl oz	++++	12 hrs/7 days	
		tebuconazole (Orius 20AQ)	8.6–17.2 oz	+++++	12 hrs/0 days	
		fenbuconazole (Indar 2F)	6 fl oz	++++	12 hrs/0 days	
		difenoconazole MOA 3 plus cyprodinil MOA 9 (Inspire Super)	16–20 fl oz	+++++	12 hrs/0 days	
<b>Moderate to heavy brown rot pressure</b>	21 days preharvest	pyraclostrobin MOA 11 plus boscalid MOA 7 (Pristine 38W)	10.5–14.5 oz	+++++	12 hrs/0 days	Under certain conditions, mixtures of Merivon with adjuvants, additives, or other products may cause crop injury, particularly to fruit within two weeks of harvest. DO NOT use Merivon with: emulsifiable concentrate (EC) or solvent-based formulation products, crop oil concentrate (COC), or methylated seed oil (MSO) adjuvants.
		pyraclostrobin MOA 11 plus fluxapyroxad MOA 7 (Merivon)	4–6.7 fl oz	+++++	12 hrs/0 days	
		trifloxystrobin MOA 11 plus fluopyram MOA 7 (Luna Sensation)	5.0–7.6 fl oz	+++++	12 hrs/0 days	
		fluopyram (Luna Privilege)	4.0–6.8 fl oz	++++	12 hrs/0 days	
	14 days preharvest	pyraclostrobin MOA 11 plus boscalid MOA 7 (Pristine 38W)	10.5–14.5 oz	+++++	12 hrs/0 days	
		pyraclostrobin MOA 11 plus fluxapyroxad MOA 7 (Merivon)	4–6.7 fl oz	+++++	12 hrs/0 days	
		trifloxystrobin MOA 11 plus fluopyram MOA 7 (Luna Sensation)	5.0–7.6 fl oz	+++++	12 hrs/0 days	
		fluopyram (Luna Privilege)	4.0–6.8 fl oz	++++	12 hrs/0 days	
	1–7 days preharvest	MOA 3 Tebuconazole (Orius 20AQ)	8.6–17.2 oz	+++++	12 hrs/0 days	

<sup>2</sup> Effectiveness ratings range from +, slightly effective, to +++++, highly effective.