

Identification of Early Citrus Black Spot Symptoms

M. M. Dewdney, J. D. Burrow,
and M. A. Ritenour

Identificación de los Síntomas Iniciales de la Mancha Negra de los Cítricos



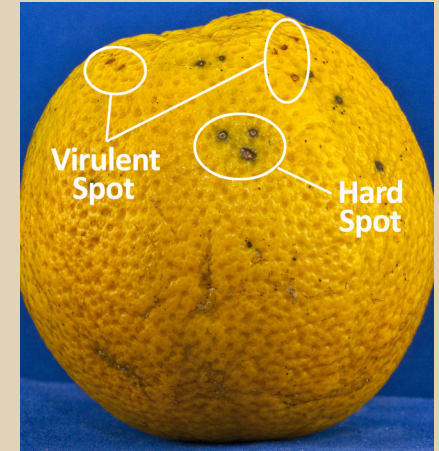
Hard Spot
Manchas o puntos duros



Hard Spot
Manchas o puntos duros



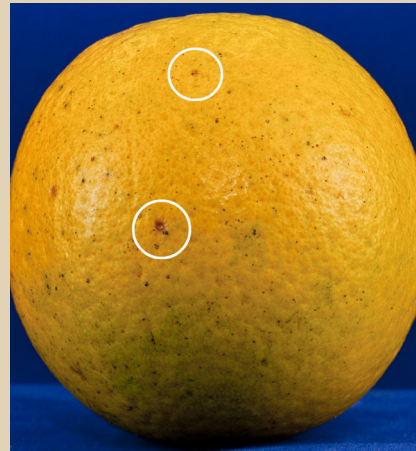
Hard Spot
Manchas o puntos duros



Hard Spot and Virulent Spot
Manchas o puntos duros y Mancha virulenta



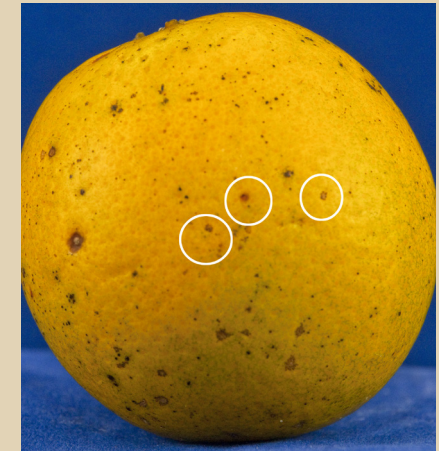
Virulent Spot
Mancha virulenta



Virulent Spot
Mancha virulenta



Virulent Spot
Mancha virulenta



Virulent Spot
Mancha virulenta

1. This document is PP285, one of a series of the Plant Pathology Department, UF/IFAS Extension. Original publication date July 2011. Revised August 2018. Visit the EDIS website at <http://edis.ifas.ufl.edu>.

2. Megan M. Dewdney, associate professor, Department of Plant Pathology; J. D. Burrow, Extension program manager, UF/IFAS Citrus Research and Education Center; and Mark A. Ritenour, professor, Department of Horticultural Sciences, UF/IFAS Indian River REC; UF/IFAS Extension, Gainesville, FL 32611.

The Institute of Food and Agricultural Sciences (IFAS) is an Equal Opportunity Institution authorized to provide research, educational information and other services only to individuals and institutions that function with non-discrimination with respect to race, creed, color, religion, age, disability, sex, sexual orientation, marital status, national origin, political opinions or affiliations. For more information on obtaining other UF/IFAS Extension publications, contact your county's UF/IFAS Extension office.

U.S. Department of Agriculture, UF/IFAS Extension Service, University of Florida, IFAS, Florida A & M University Cooperative Extension Program, and Boards of County Commissioners Cooperating. Nick T. Place, dean for UF/IFAS Extension.