

Citrus Canker Symptoms on Nursery Trees

Timothy D. Riley, Megan M. Dewdney,
and Jamie D. Burrow



Canker < 1 month old (bottom)
(Hamlin sweet orange)



Canker < 1 month old (bottom)
(Hamlin sweet orange)



Canker < 1 month old (top)
(Hamlin sweet orange)



Canker < 1 month old (bottom)
(Swingle citrumelo)



Canker < 1 month old (bottom)
(Swingle citrumelo)



Canker < 1 month old (top)
(Swingle citrumelo)

Photo Credits: USDA, FDACS-DPI; Dan Robl, USDA APHIS PPQ; and Tim Schubert, FDACS-DPI.

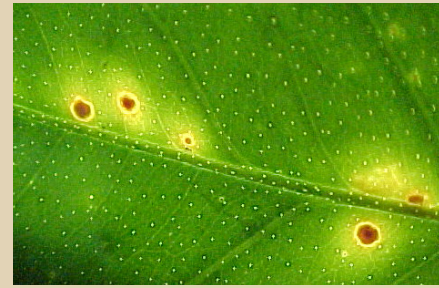
1. This document is PP304, one of a series of the Plant Pathology Department, UF/IFAS Extension. Original publication date April 2013. Revised July 2018. Visit the EDIS website at <http://edis.ifas.ufl.edu>.
2. Timothy D. Riley, plant pathologist, Citrus Health Response Program, USDA APHIS PPQ; Megan M. Dewdney, associate professor, Department of Plant Pathology, Citrus Research and Education Center; and Jamie D. Burrow, Extension Program Manager, Canker, HLB and Exotic Diseases Extension Education, Citrus REC; UF/IFAS Extension, Gainesville, FL 32611.
3. The Citrus Health Response Program is a collaborative effort involving growers, federal and state regulatory personnel, and researchers. Its goal is to sustain the U.S. citrus industry, maintain growers' continued access to export markets, and safeguard citrus-growing states against a variety of citrus diseases and pests.



Canker < 1 month old (top)



Canker < 1 month old (bottom)



Canker < 1 month old (top)



Canker < 1 month old (bottom)



Canker < 1 month old (bottom)



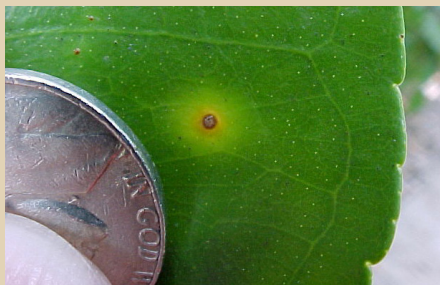
Canker < 1 month old (bottom)



Canker < 1 month old (bottom)



Canker < 1 month old (bottom)



Canker < 1 month old (top)



Canker < 1 month old (bottom)



Canker < 1 month old (bottom)



Canker < 1 month old (bottom)



Multiple lesions on injured tissue



Canker in leafminer gallery (top)



Canker < 1 month old (bottom)



Canker < 1 month old (bottom)