

Broward County Schools: A Look Back



Gallery at West Side School, Photograph by Steve Vinik

This exhibit, Broward County Schools: A Look Back was created by the Broward County Historical Commission as part of the 2nd Annual Broward County Heritage Celebration in honor of National Historic Preservation Month. The theme of the 2012 heritage celebration, Broward's Education History: A Path to the Future, was presented to bring focus to this part of the County's rich heritage.

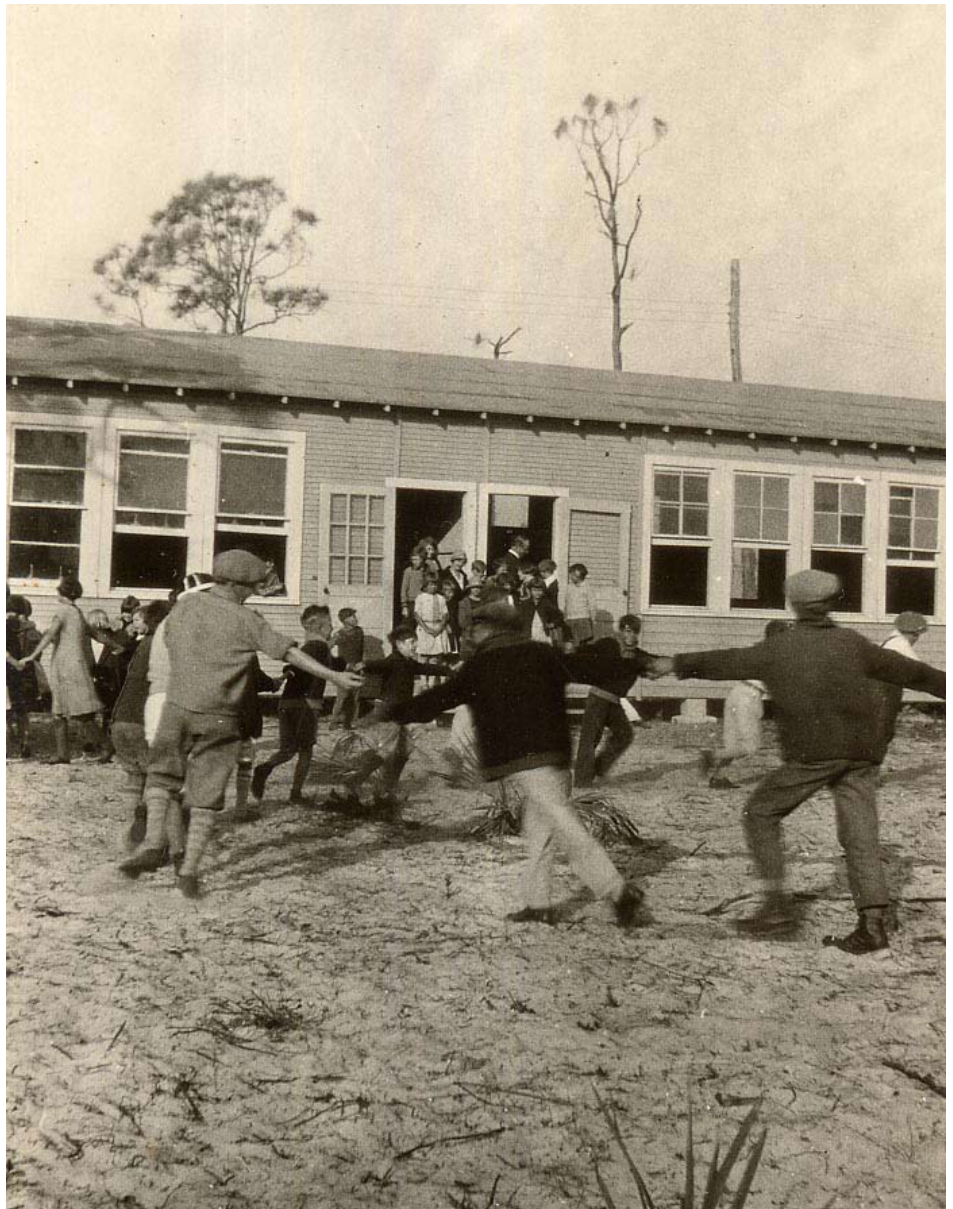
On October 1, 1915, Broward County was officially incorporated by Florida State Statute. The county was formed from the southern part of Palm Beach County and the northern part of Dade County. Bro-

ward County's population was then 4,763. At the time of incorporation, nine schools from Hallandale to Deerfield were handed off to the newly-elected, three-member Broward County Board of Public Instruction. In 1915, there were 835 white students and 247 black students, who were educated separately. By 1920, the population of Broward County had grown to 5,135 residents, prompting the Board to organize the county into three districts; today there are five.

The earliest educational opportunities for African-American students were provided by the Dade County Board of Public Instruction. Lat-

er, for some African-Americans, school buildings were provided by the Rosenwald School Building Program. Broward County had four Rosenwald schools.

This beautifully presented look back is captured in fourteen large panels with historic images and informative text. Glimpses of history are represented in this exhibit on these panels depicting: Broward County Schools: In The Beginning, Broward Schools 1915-1938, African-American Schools in Broward County, Rosenwald Schools, Gone But Not Forgotten: School Namesakes, First Schools in New Suburbs: 1951-1990, and Private and Specialty Schools. Augmented by interesting and well-preserved artifacts, the exhibit is something to experience.



Portables at North Side School in Fort Lauderdale, Courtesy of Helen Landers.



West Side Grade School in Fort Lauderdale, Courtesy of Helen Landers.

The Broward County Schools: A Look Back Exhibit is on display in the Gallery at the Broward County Historical Commission Building located at the historic West Side Grade School, 301 Harmon (SW 13th) Avenue, in Fort Lauderdale, Florida. The exhibit will remain on

display there until late April. At that time, this exhibit will become a part of the traveling exhibits which will rotate through Broward County's Regional Libraries. For more information, please call the Historical Commission office at 954-357-5553.

Primary contributors to the *Broward County Schools: A Look Back* Exhibit are as follows:
 Dave Baber, Historic Preservation Coordinator
 Denyse Cunningham, Curator
 Helen Landers, County Historian
 Zoraida Garcia, Digital Media Designer, Office of Public Communication