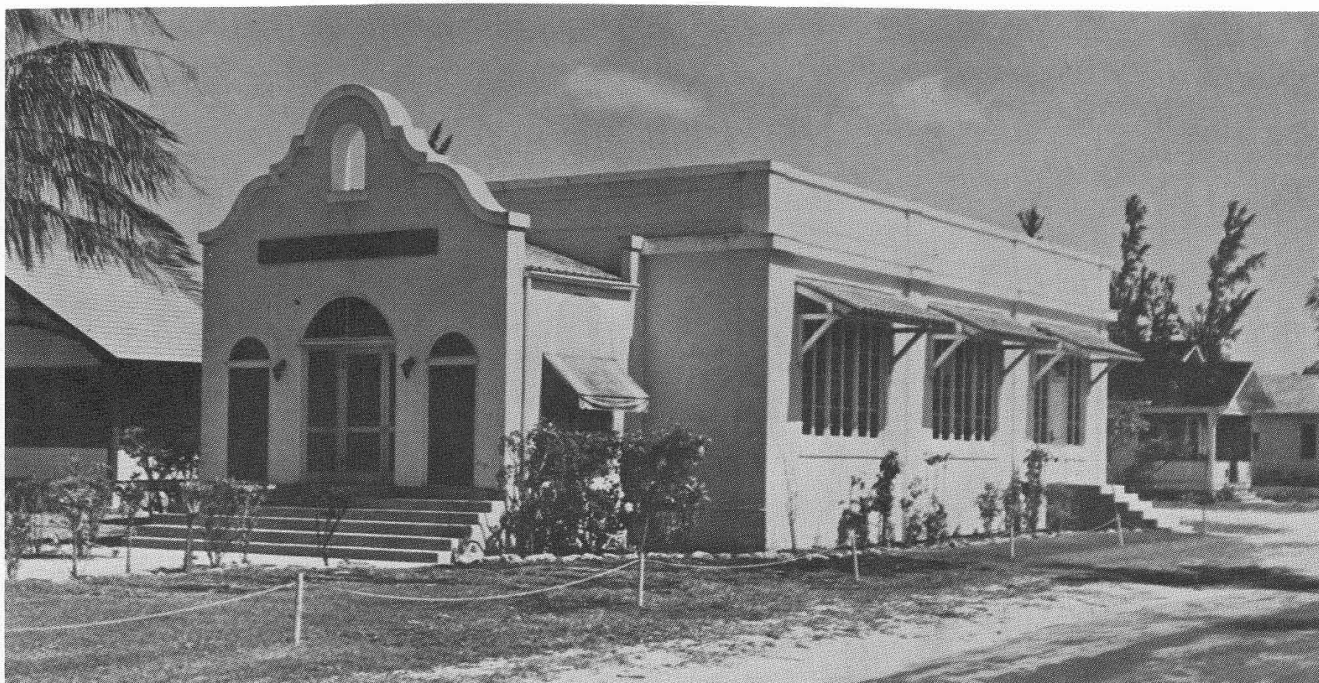


# COUNTY RECYCLES OLD CHURCH



Fort Lauderdale Historical Society

The Broward County Board of Commissioners, through their Maintenance Division, has begun the rehabilitation of the First Church of Christ, Scientist on South New River Drive in Fort Lauderdale. When constructed in 1918 the building had an elaborate arcaded porch and sculpted gable (above). The church was later expanded and these unique details removed.

The riverside structure also served as a public library and as the headquarters for the Cerebral Palsy Clinic (bottom left). When the current work is completed (bottom right), it will house the offices of the Broward County Historical Commission and the Broward County Archaeological Society museum.



Broward County Historical Commission

