

Past Perfect Postcards

Broward County Postcards from the Collection of Judge Robert Scott

INTRODUCTION

In 1986, Circuit Judge Robert C. Scott allowed the Broward County Historical Commission to borrow and copy his collection of rare, early Broward County postcards, many of which dated from the early twentieth century. The cards, both black-and-white and tinted, most of them postmarked, illustrate natural features, agriculture, tourism, transportation, trade, and Everglades reclamation. They provide an intimate view of Broward life in the years from the Everglades reclamation boom of the early 1910s to the Florida real estate boom of the mid-1920s.

Judge Scott, a native of Chicago and resident of Broward County since 1951, is a student of south Florida history and a collector of related postcards, documents and artifacts. He is now retired from the bench.

New Town of Progress 1911.
Fort Lauderdale, Fla.

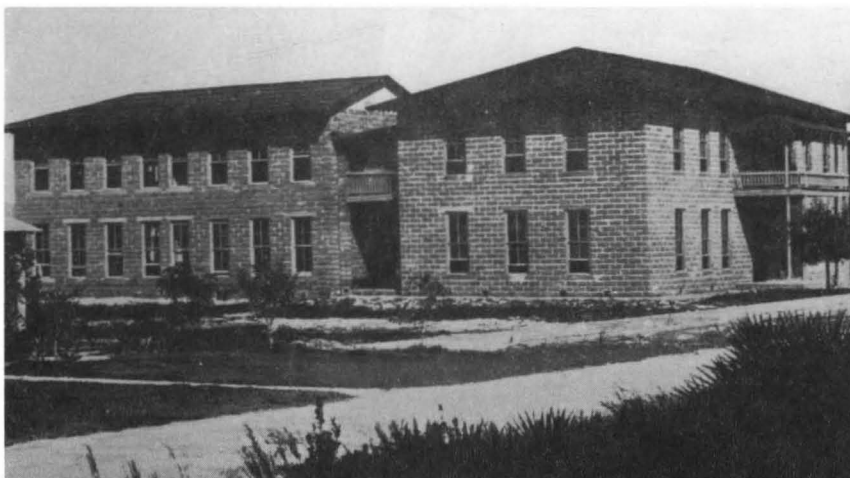
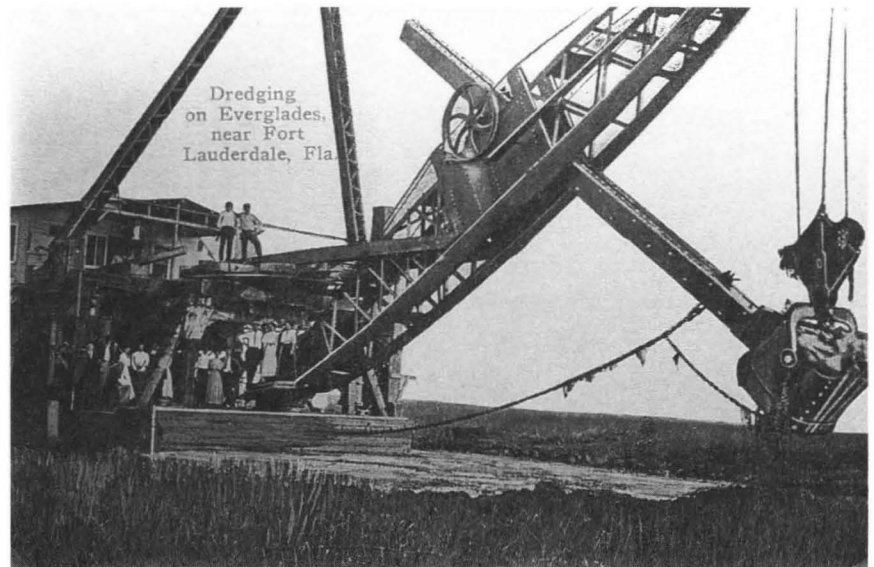


The inscription on the card at left, postmarked Fort Lauderdale, March 12, 1911, says, "Get your ox ready for a trip to the Sunny South." The card above shows the tent city at "Progress" (Progresso) at the time of the Florida Fruit Lands Company's lottery there in 1911.



Riverfront view of downtown Fort Lauderdale, ca. 1911. Stranahan's store is at center and the Wheeler building under construction at far right.

This view of a dredge in the Everglades was published by the Fort Lauderdale Pharmacy and Wheeler Mercantile Company about 1912.



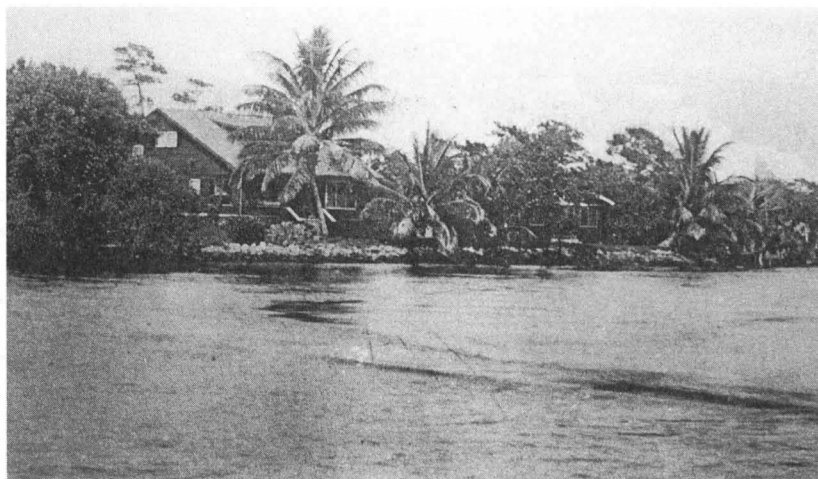
This building on South Andrews Avenue served as Fort Lauderdale's second schoolhouse when this ca. 1912 postcard was printed. Three years later it became Broward County's first courthouse.

“Pioneering on the edge of the Everglades, near Ft. Lauderdale, Florida” is the title of this card, which is postmarked 1913.



This ca.1913-14 view, looking north along the F.E.C. Railway tracks from the New River bridge, shows the Philemon Bryan house (left foreground with porch) and the train station (just right of the tracks).

Sunkle Point on New River, ca.1913-14, showing an early residential subdivision. This postcard, like several others in the Scott collection, was published by Guy E. Phipps.



Brickell Ave. looking North, Ft. Lauderdale, Fla.

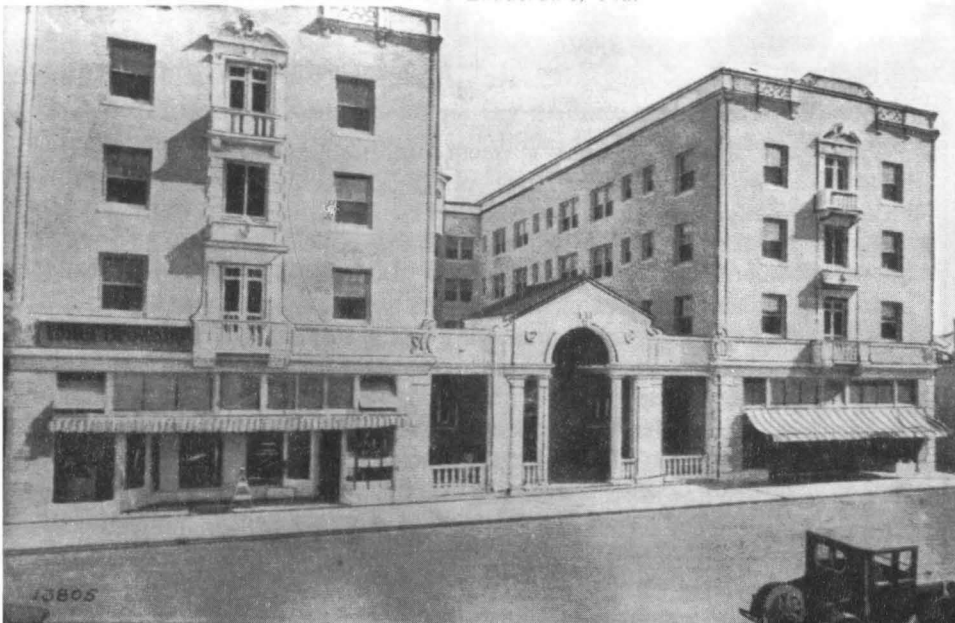


Fort Lauderdale's original main street, Brickell Avenue, ca.1915. The large building on the left is the Oliver Brothers' Store. On the right are the Bryan (now Shepherd) Building and the Gilbert Hotel. Note parking--for both bicycles and autos--in the center of the street.

Seminole Indian camp on the banks of New River, ca.1921. The Seminoles maintained camps in Fort Lauderdale until the boom years of the mid-1920s.



Hotel Broward. Fort Lauderdale, Fla.



The Hotel Broward on South Andrews Avenue at the corner of Las Olas Boulevard opened in 1919. This card from the early 1920s shows it at the height of its glory as Fort Lauderdale's first "tourist hotel."