

## The Creation of Broward County

# BROWARD COUNTY IS BORN

*Fort Lauderdale Sentinel*  
Friday, September 24, 1915, pg. 1

### "Broward Celebration"

Largest Event on  
East Coast of Florida

Broward County, which will become a surety October 1, with Ft. Lauderdale the County Seat, will be appropriately celebrated, and all citizens are asked to decorate their place of business and homes. The committee in charge have been busy making arrangements and a big time is expected. The following program will be given:

1:40 p.m.

Parade Band; Car with Speakers; Other Cars; Music by Band.

Invocation — Rev. Frost; Introduction by Col. Reed. Welcome address, Judge Shippey; Music. Delivery of County by Chairman of Board of County Commissioners.

7:30 p.m.

Music by Orchestra; Introduction of County Officials by Judge Drake; Music, Solos.

*Fort Lauderdale Sentinel*  
Friday, October 8, 1915, pg. 1

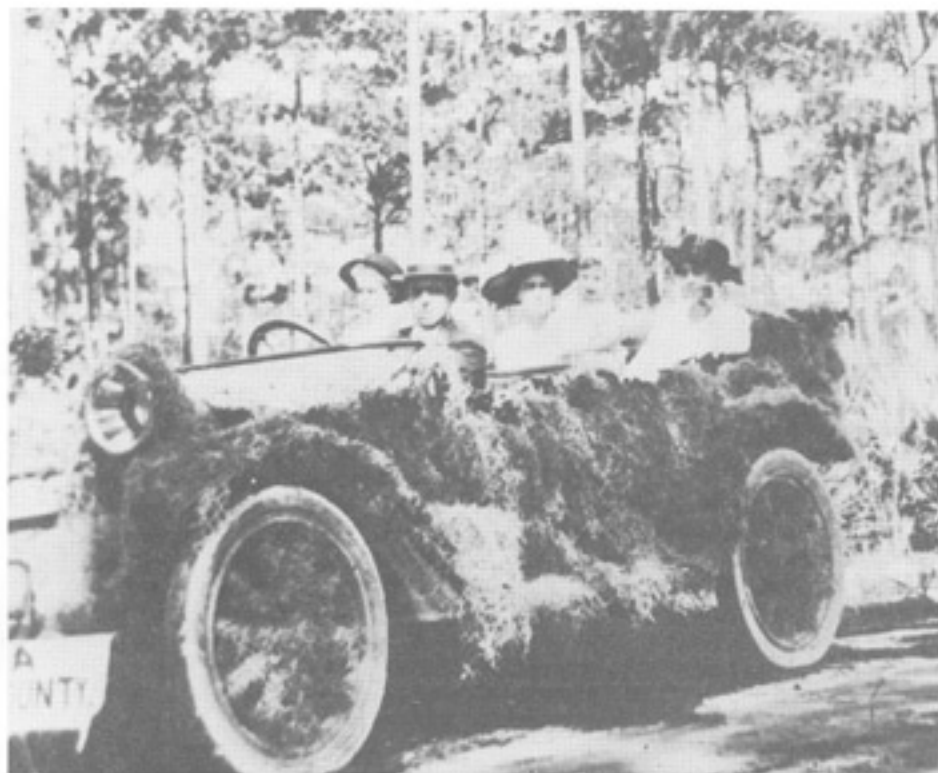
### "Broward County Celebration"

A Great Day for Fort Lauderdale,  
the County Capital

City Decorated—Grand Parade  
Good Program — Big Crowd

The celebration in honor of the birth of Broward County last Friday was one of the greatest events in the life of Fort Lauderdale. The homes and business houses were decorated, and presented a gala appearance. Especially attractive was the window of Aushman & Shippey with its artistic decorations.

The procession formed at 2:30 and



Dania businessman Martin C. Frost's car, decorated for the parade celebrating the birth of Broward County, October 1, 1915.

was led by Catherine Wheeler dressed as a clown, and astride her pony "Ginger." Following was Misses Marion and Margaret Reed driving "Sentinel," their cart, [which] look[ed] very pretty; then came Misses Margaret Ewing and Margaret Oliver, and baby Frank. The Broward county band followed by two dozen or more decorated automobiles. Visitors from the different counties witnessed this fine parade. The procession marched to the new school house where the exercises took place.

After the band played a patriotic air, Col. Reed made an appropriate speech, in which he said: "Today is born the new County of Broward, and we are here to encourage the officers and give them our help. A few months ago the towns of Hallandale, Dania, Davie, Fort Lauderdale, Pompano and Deerfield became convinced that the counties were too large, so they de-

cidied to make Fort Lauderdale the capital of Broward County; that we should not be forgetful of the splendid part played by Messrs. Frank and T. M. Bryan in getting this county, and are most deserving of the highest praise, as well as gratitude of our people." A resolution offered by Mr. Calder and seconded by Editor Mathews, was carried, commemorating them on the good work done in Tallahassee.

Suspended over the stage in large letters, appeared the words "Palm and Dade counties." When the exercises started, these letters were shifted unseen, so that the banner read "Palm Beach and Dade counties," the idea being that Dade is daddy of Broward. The letters were shifted again and the words spelt Broward county. It was a very unique and pretty arrangement.

Invocation by Dr. Frost. Col. Shippey was next introduced, and made a

short but impressive speech, stating that it appeared strange that he should have been asked to welcome people to something of which they are a part "This is a Broward county celebration," he said, "from Deerfield on the north to and including Hallandale on the south, out into the Everglades on the west, and to the Atlantic on the east, to all not residing within these confines I extend a most hearty welcome."

The speaker of the day was Col. C. A. Walsh, who paid a high tribute to Broward county, Fort Lauderdale and the Everglades. He is a man of good presence, experience in public life, so had no trouble in praising the audience. At the conclusion of this address the band played a very beautiful selection.

Rev. R. V. Atkinson delivered greetings from Miami. He stated that Palm Beach county is the son of Dade County, and therefore Broward county is the grandson and son of Dade. We have come to see the child christened, he said.

Then followed the presentation of the strips from Dade and Palm Beach counties forming Broward county. This was done when Mr. Paddison stepped on the stage and said, having lived in Fort Lauderdale, he felt at home and was pleased to take part in the celebration. A large chart of Dade and Palm Beach counties was in the center of the stage and Capt. Jaudon of Miami attached to the upper portion of the Dade county map a strip representing the lower portion of Broward. Mr. Paddison of West Palm Beach attached to the map a strip representing the upper portion of Broward county, and with this ceremony the presentation of the new county was concluded.

Capt. Jaudon, tax assessor, gave a complete statement of the part of Dade county now included in Broward, as follows:

Real estate . . . . .	\$1,409,400.00
Personal . . . . .	140,150.00
[F.E.C. Railway . . . . .]	154,908.00
International Ocean Telegraph Co . . . . .	2,972.00
Pullman Car Co . . . . .	3,218.00
A total of . . . . .	\$1,710,648.00

To this add your outstanding tax sale certificate values . . \$299,160.00  
Making grand total of . . . . . \$2,009,808.00

I beg to advise further that the taxes to be derived from the above values are as follows:

State taxes, 6 mills . . .	\$10,262.81
County taxes, 25 mills . .	42,761.70

"You will find this transcript complete in every detail, with the exception that I have not had the oppor-

tunity to completely verify same as to description. However, the values and extensions are complete."

At the evening exercises the Auditorium was packed. A fine musical program was arranged. The first number was a song by the Glee Club, followed by a cornet solo, by Prof. Hammond. Solos by Mrs. Wheeler and Roy Heironymous were enjoyed.

A resolution was offered by T. M. Bryan, that the birth of N. B. Broward be celebrated each year, which was carried. A committee consisting of T. M. Bryan, J. D. Butler, and Wm. Hardee were appointed to look after the matter.

The presentation of the county officers was next on the program. Judge Drake made a splendid speech, with a mind full of knowledge, he never fails to say something good. He presented F. A. Bryan first, who said he would like to express his appreciation but that he was fuller of gratitude than speech. He told what had been done by the Commissioners since their appointment.

Sheriff A. W. Turner was then called. He said you have put the wrong man up this time, but that I will do my full duty so far as I see it.

W. O. Berryhill then stepped bravely before the footlights and would perhaps, have made the speech of the evening had his friends been less demonstrative. He began to talk in a moderate tone, and from all sides the cry was "louder." He raised his voice and they still cried "louder." Then he said, "Come out behind the house and I will tell you all about it." (Applause.)

W. Q. Bryan paid a beautiful tribute to Broward county, and expressed his willingness to do all he could to make a good tax-assessor; that he would never forget his obligation to the people who gave him his position.

Judge Bunn thanked the people for electing him.

J. J. Joyce said he was proud to be one of the first commissioners of Broward county, and that he would do his very best to make a good officer.

W. B. [should be A. B.] Lowe, Chairman of the Board of County Commissioners, said he thought that one tune in a day was enough for a poor suffering humanity to be subjected to; he hoped that needed things might come to pass, that united action was necessary if the best results were obtained.

Attorney G. H. [G. A.] Frost expressed his gratitude in being elected.

D. G. Tenbrook then said, "I live to work! I am pleased to serve you. Many thanks."

J. M. Holding[']s speech was interesting.

Mr. Neville thanked one and all for

their support and said he would do all he could to build up the schools of Broward County.

J. D. Butler, another member of the school board, made a good speech full of fine suggestions.

Broward County celebration will long be remembered by the people of the county.

All business was suspended. H. V. Calder was marshal of the day.

Mr. George Merrick of Dade county has been commissioned to complete the unexpired term as commissioner vacated by F. A. Bryan. This change is caused by Mr. Bryan being clerk of the district court of Broward county.

*Fort Lauderdale Sentinel*  
Friday, October 1, 1915, pg. 1

### "Ft. Lauderdale County Seat of Broward County"

Some of the Early History of Ft. Lauderdale and Surrounding Territory

Broward County Celebration Today—Big Representation From All Parts of the New County. Rapid Growth of the City in a Few Years

At this time when the hearts of our people are gladdened by the birth of a new county, this seems an opportune time to give a short history of Fort Lauderdale. Twenty-five years ago this place was the home of the Indians and the alligators.

It is safe to say that January 27, 1903 [should be 1893], was the beginning of Fort Lauderdale. On this date Mr. Frank Stranahan settled at Cooley [Colee] hammock, afterwards moving to his present location. His nearest and only neighbors were a band of about fifty Johnny Jumpers (Indians) who were camped about three hundred yards distant. This was the first town site of Fort Lauderdale, the post office was then located on the beach in a cherookee box. The post office was afterwards moved to the Stranahan store which was located at his present residence site. The mail previous to this was carried down the beach by the carrier who kept boats at the several inlets to ferry himself across. On one occasion some one having stolen the boat, the carrier started to swim the inlet and a shark proceeded to read the postal cards.

About this time a mail route was established with a relay station at New River or Stranahan Camp.

The first school was established in 1899. The school house was built by public subscription. Miss Ivy Cromartie, now Mrs. Frank Stranahan, was the first teacher with 17 [actually nine

when the school first opened] pupils. The location of this building was where the Broward County Court House is now located.

The next settler was the Hon. P. N. Bryan, who located here in the summer of 1895, his family following later.

Credit is due these pioneers who were willing to give up the charms and comforts of civilization to build a future for themselves and open a road for others to come after them. Their prophetic vision enabled them to read the future and avail themselves of an unequalled opportunity.

The [Florida] East Coast [Railway] started the extension from Palm Beach to Miami, and Mr. Bryan had the contract for ten miles of this work. After the completion of this road, Mr. Bryan bought 120 acres of land about five miles up the river where he lived in the hammock for about two years, raising vegetables and setting out an orange grove. For a long time he brought the produce down in a skiff, there being no boats on the river at that time. There was no available way of crossing the river, so they swam a little pony.

About this time A. J. Wallace and E. T. King came and bought property and located.

The travel was coming in fast. The wonderful possibilities of the Everglades and the drainage of this rich land had reached the outside world, and people from every state in the union were flocking here. Credit is due the Immortal Broward, as the draining of the glades was his aspiration. Others have taken up the work that he started, and the work is being done as rapidly as possible.

Mr. Bryan saw the necessity of a boarding house, so in 1900, built what is now called the Annex, and opened a hotel. The people came so fast that a larger hotel was necessary. In 1906 [1908], the concrete hotel called the Bryan Hotel, but now the New River Hotel, was built. Mr. and Mrs. Bryan still retain an interest in the hotel. Last summer they built a palatial home north of the hotel, where they live a retired and blissful life, and talk over the happy days of pioneer life.

The various families kept coming in, the Marshalls, Olivers, Dr. Kennedy, and others. In 1907, the population had reached about one hundred. In 1911 a great boom was on, the population had then reached several hundred more, the place had been well advertised; a steady flow still keeps coming until now, it has reached to fully thirty-five hundred [actually 1,870, according to the official state census].



This symbolic painting by Henry T. Brown depicts Broward County as an angel of prosperity, carrying a cluster of citrus fruit.

The progress and rapid growth of Ft. Lauderdale was the means of giving us the new county of Broward, which is being celebrated today, Friday, Oct. 1. The wonderful developments and improvements being made, shows the progressiveness of the people.

The city has several very creditable blocks of business houses, also fine hotels, some rooming houses, eating places, good drinking water, sewerage system, electric lighting facilities, telephone system, long distance, rock paved streets, cement sidewalks, two weekly newspapers, ice plant, several lumber yards, comfortable homes, many denominational churches, one of the best public schools in the state, good fishing, boating, and bathing, and an ideal climate. Also hope to have a gas plant soon.

Napoleon B. Broward, Florida's greatest Governor, and for whom this county is named, was born in Duval county 59 years ago. This sterling man was left an orphan early in life, and without schooling worked himself to the highest position in the gift of the people of Florida. He spent his boyhood days and a great part of his manhood in steamboating. Starting at the lowest round he soon became commander of boats. The first office

held by him was sheriff of Duval county and made a record of which any man might be proud. In 1904 he was elected Governor over Robert Davis, Denet Moyes [Dannite Mays], and C. M. Brown by a large majority. By advocating the drainage of the Everglades in his convincing way, he carried everything before him. His heroism as commander of the Three Friends on which he ran the blockade [of Cuba, during its insurrection against Spain], made him many votes. He was a most convincing speaker and when he died we wonder if he had his equal in Florida. He served in the legislature with distinction. In 1911 [1910] he was nominated for the United States Senate, but to the people's regret and the state's misfortune, he was called to the great beyond before he could serve the people in congress. With his great brain, strong personality and sterling integrity, he would have been one of the foremost men in that great legislative body. If we were asked to name Florida's greatest son we would not hesitate to say Napoleon B. Broward. He was unselfish in his devotion to his state, and gave to this Republic as great affection as mortal man could give. We have honored our county in naming it after such a distinguished man.



Prosecuting Attorney Gregers A. Frost in his courthouse office, where several early county commission meetings took place.

*Fort Lauderdale Sentinel*  
Friday, October 1, 1915, pg. 1  
"Our Broward County"

It is with best wishes to the new county fathers that Hallandale enters Broward County. Though we leave good old Dade with regret, it is to be hoped that the change will be for the best of every town in Broward County.

All stores will be closed on Friday afternoon in Hallandale and the school will have a short session that all may have a chance to attend the celebration at the new county seat.

In Union is strength. Here's hoping for good county government and unity in each community towards the welfare of Broward County.

*Fort Lauderdale Sentinel*  
Friday, October 8, 1915, pg. 2

"Tribute to Broward County  
From Dade County"

Blessings on you, Broward county, and may all your big dreams come true! This is a hearty message that goes from old Dade to her new county, taken from her territory but bound by un-

breakable ties of friendship and mutual interest in her heart —

Today sees the inauguration of Broward county's official existence, and never did a county begin its life under more favorable auspices or with brighter vistas of the coming years.

As the Gateway of the Everglades, Ft. Lauderdale, the county seat, stands ready to receive the riches that will come in the development of Everglade farms. Out on the 'glades great truck farms and groves and cattle pastures will furnish produce of all description, and the development of every farm will mean the erection of new homes and the arrival of more good people.

Settled through Broward county there is already the nucleus of a commonwealth which promises to be of an especially superior type. The people are of a high order of intelligence, they have "seen things," and are ready to put new ideas and new energy into everything they undertake. Furthermore they know that Broward county can be made to blossom like a garden, and they have the ability and the faith to bring this to pass.

So blessings on you, Broward county, may you ever keep clean ideals — may you always go after what you want with the vim and the success that you have shown thus far — may

you see your lands peopled with thousands of new settlers just like the folks you have with you now—and may you ever feel the good will and cordial interest of the people of old Dade.

— Miami Metropolis

*Fort Lauderdale Sentinel*  
Friday, October 15, 1915, pg. 4

"County Commissioners  
Proceedings"

The Board of County Commissioners of Broward county met at the office of County Attorney [Gregers A.] Frost, Oct. 1, 1915.

Tax Assessor J. F. Jaudon of Dade county filed a transcript in triplicate of the tax assessment of that part of Dade county which became a part of Broward county, showing the aggregate assessed values as follows:

This in accordance with Section 14, Chapter 6934; Acts of the Legislature of 1915.

Real Estate .....	\$1,409,400.00
Personal .....	140,150.00
F.E.C. Railway .....	154,908.00
International Ocean Telegraph Co .....	2,972.00
Pullman Car Co .....	3,218.00
A total of .....	\$1,710,468.00
	[\$1,710,648.00]

To this add your outstanding tax sale certificate values 299,180.00, making a total of \$2,009,808.00.

I beg to advise further that the taxes to be derived from the above values are as follows:

State taxes, 6 mills . . . .	\$10,262.81
County taxes, 25 mills	
.....	\$42,761.70

Trustees Special School District No. 10, Hallandale, Fla.

In compliance with Section 1 of Chapter 5962, Laws for the Assessment and Collection of Revenue, State of Florida, I beg to hand you herewith statement showing amount of Special School Tax District Tax and interest and sinking fund for school bonds tax for the year 1915.

S. S. DISTRICT NO. 10

Real Estate .....	\$618.09
Personal .....	32.85
F.E.C. Railway .....	112.36
International Ocean Tel. Co .....	2.31
Total .....	\$765.61

Interest and Sinking Fund on School Bonds:

Real Estate .....	\$824.12
Personal .....	43.80
F.E.C. Railway .....	149.81
International Ocean Tel. Co .....	3.08
Total .....	\$1,020.81

