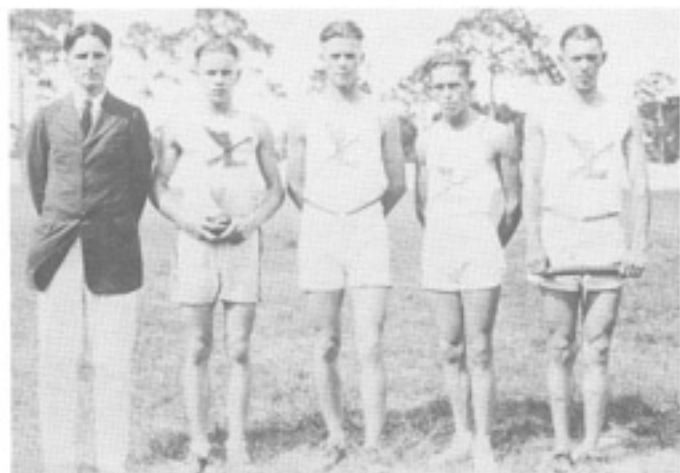


An Album of

# FLYING



# ATHLETICS



Coach John Prescott with the 1923 Flying L relay team (left to right): Mark Mahannah, Vernon Clinton, Frank White, John Burwell.



Part of the legendary 1924 Fort Lauderdale High School football team. See page 36 for a photograph of the entire team with identification.



The 1923-24 Flying L girls basketball team. Top row: Pauline Searles, Marion Raulerson, Nancy Gose, Dorothy Dahlquist. Middle row: Maude Flowers, Mrs. Colyer (coach), Beatrice Rork. Front row: Alice Sears, Captain Winifred Dahlquist, Violet Davis.



Fort Lauderdale High School's state championship 1924-25 girls basketball team. Back row: Nancy Lea, Jennie Lea, Maude Flowers, Winifred Dahlquist. Middle row: Nancy Gose, Mrs. Ruth Kepner (coach), Alma Dichtenmueller. Front row: Ada Baird, Captain Pauline Searles, Marion Mills.

The 1931 girls basketball team. Back row: unidentified, Florence Tribble, Allene Marshall, Martha Makemson, Coach Winifred Dahlquist Smith, --- Bartlett, Melba Wiley. Front row: Gussie Pittman, unidentified, Pressie Barwick, Helen Baird, "Toots" Griffith.



1930 Flying L football team. Kneeling: Jay Humphreys, Leon "Bunny" Hendrickson. Front row: Dan "Laddie" Vaniman, Leonard Feldman, Harry Jones, Thurman Spease, Harry Bray, Reed Bryan. Back row: Coach Chet Freeman, Charles Gullstrom, unidentified, Robert Hansen, J. T. Long, unidentified, Barton Woods, unidentified, Frank "Cotton" Clinton, next two unidentified, John Delbert Graham.



The 1931 football team. Front row: Harry Jones, Murray Joiner, Bob Reed, Thurman Spease, Leon Hendrickson, Eugene Lawrence (manager), Ashton Coughenour. Middle row: Chris Cox, Jay Humphries, Bob Lowry, Cecil Lee, Frank "Cotton" Clinton, Jim Marley, Sammy Graham, Louis Campbell, J. T. Long. Back row: Whitney Curtis, Paul Essex, Barton Woods, David Oliver, Russell Frazer, Coach Chet Freeman, George Cody, Sidney Sandler, Wesley Dieffenwierth, Fred Dulson.

Pep Club, 1937-38. Front row: Dorothy Rawls, Luella Nichols, Mary June Carpenter, Betty Weiner. Second row: Hazel Lee, Margaret Cain, Barbara Ash, Virginia Webster, Ann Forhan, rest unidentified, Jean Lloyd. Fourth row: Mary Louise Griffis, unidentified, Betty McNeff, unidentified, Jean Shand, Beatrice Barwick. Drum majorette in center is Doris Cheshire.



1938 Fort Lauderdale High School baseball team. Back row: Doug Leavitt, John Harold Cox, Billy Holland, Coach A.E. "Red" Sweeney, Fred Gore, Cooper Kirk, Fred Zloch, Bill Ulrich. Front row: Lovick Miller, Linwood Cabot, Russ Enghram, Lou Becker, Harold Gentry, George Ives, Fred Sapp, Don Messer, George Tedder.