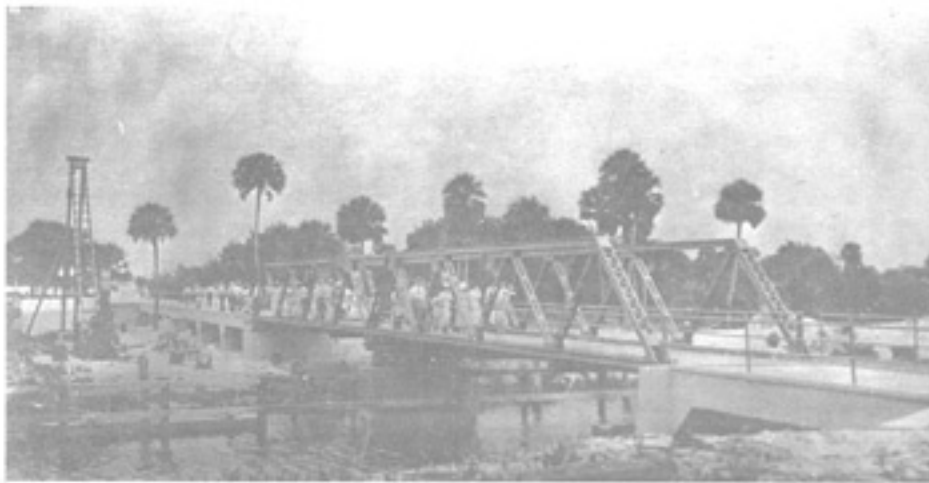
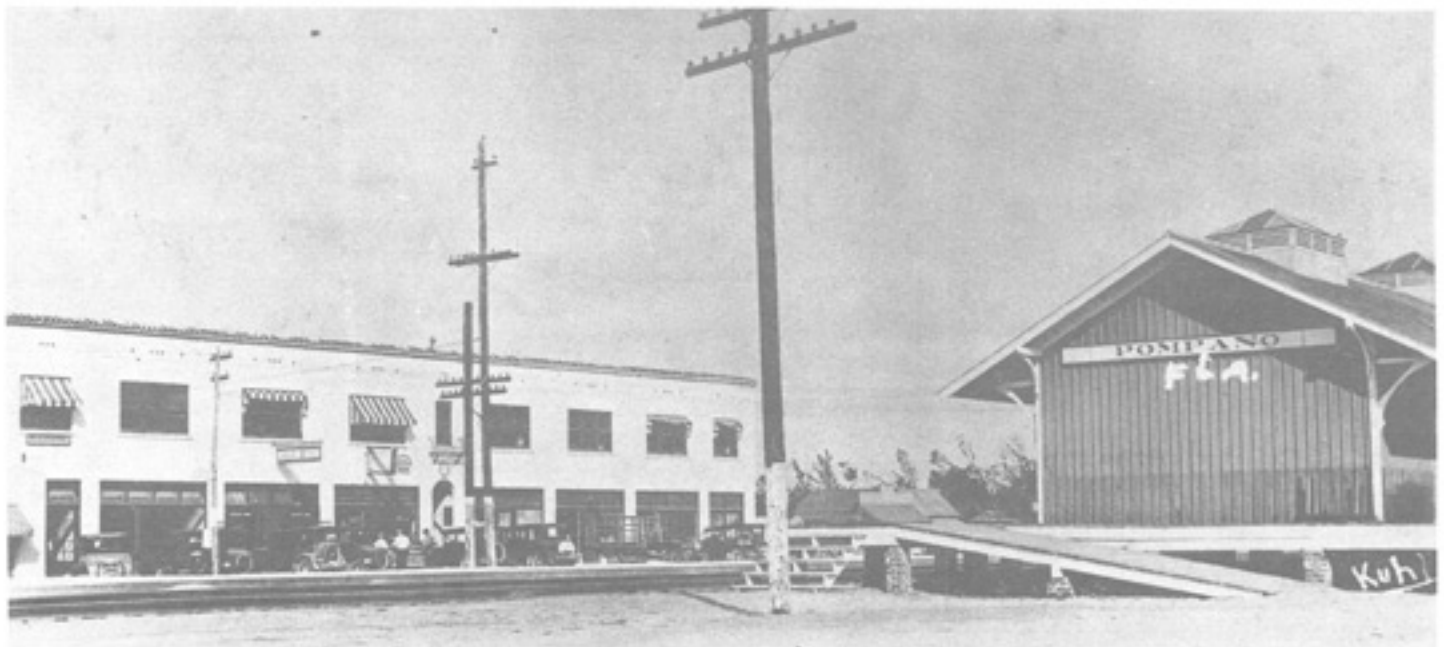


A TRIP DOWN THE DIXIE

Early Scenes Along the Dixie Highway in Broward County



Citizens commemorate the opening of the new Dixie Highway bridge across the Hillsboro Canal at Deerfield. The bridge, which connected Broward and Palm Beach counties, consisted of concrete approaches and a steel girder turnstile span. This view faces northeast, from the Broward County side of the canal.



Downtown Pompano, looking southeast, as seen from the Dixie Highway in the 1920s. The F.E.C. Railway depot is to the right, the railroad tracks

running between the highway and the business district, as they do today.

An early version of a motor home — a Model-T truck with homemade wooden camper top — in front of the McCarty store on the Dixie Highway in Oakland Park, 1927.



The Dixie Highway bridge over the south fork of Middle River at Wilton Manors, 1929. This was one of two concrete bridges constructed by the county on the highway in 1923-24.



A peaceful scene on the Dixie at the north end of Fort Lauderdale, c. 1917.



Masonic parade up Andrews Avenue in downtown Fort Lauderdale, c. 1924-25. Andrews Avenue, the only street bridging New River until 1926, served

as the Dixie Highway as far south as present-day Southeast Sixth Street.



The Dixie Highway (right) at the fork of Andrews Avenue (left) in southern Fort Lauderdale, 1925. This view, looking north, was taken at the time Andrews

was extended south to provide access to the new Croissant Park development.



The Dixie Highway ran parallel to the Florida East Coast Railway through much of Broward County. These two south Broward scenes from the 1920s

show the Dixie and the railway depots at Hollywood (above) and Hallandale (below).

