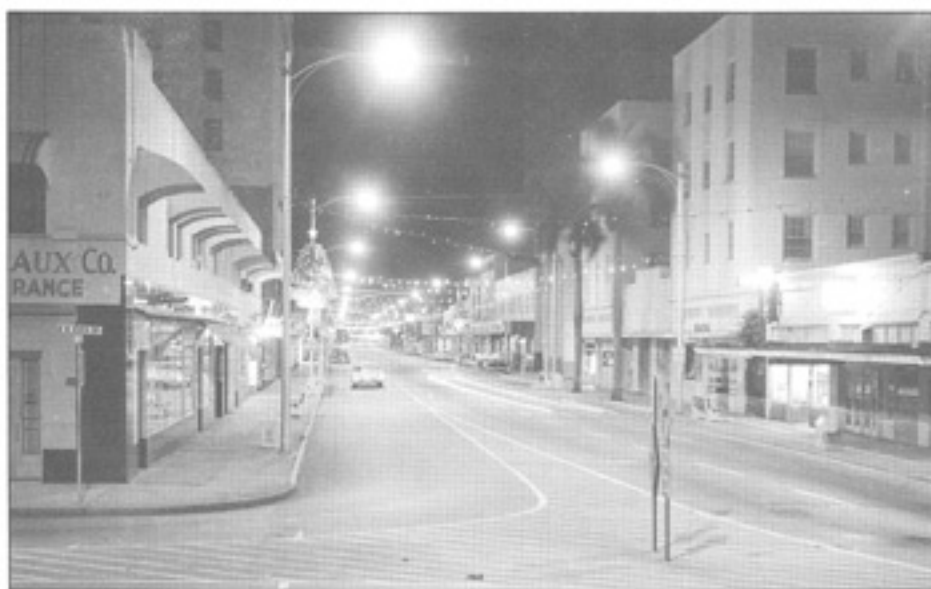


# ROADWAYS TO THE FUTURE ---

## 1960s Scenes from the City of Fort Lauderdale Traffic Engineering Department Collection



Christmastime in the heart of downtown Fort Lauderdale, 1961. View looking north on Andrews Avenue from North New River Drive.

East Las Olas Boulevard, looking west toward downtown from the Himmarshee Canal, c. 1968-69.





Northwest Sixth Street looking west at Northwest Ninth Avenue intersection, 1966.  
Sign at Texaco station at far right shows gas selling for 24.9 cents per gallon.



Gateway curve on Sunrise Boulevard, looking west from Northeast Twentieth Avenue, c. 1964.



Out in the country — Northwest Twenty-first Avenue (Decker Road) looking north toward Executive Airport, 1962.



Oakland Park Boulevard and U.S. 1 was a busy intersection, even in 1962.



Federal Highway (U.S. 1), looking south from Northeast Sixth Avenue, c. 1962-63.



Housing developments and shopping centers cover the land near the intersection of Prospect Road and Andrews Avenue in this winter 1962 scene.



Broward Boulevard, once a narrow, lightly traveled road, was on its way to becoming one of Fort Lauderdale's main thoroughfares by 1960, when this view, looking eastward from West Thirteenth Avenue, was taken.



Southeast Third Avenue, looking northward toward the New River bridge, 1960. Note the Broward County Courthouse bell tower, soon to be demolished, at left.



Eastward view of the Southeast Seventeenth Street/A-1-A bend at the Mercedes River bridge, Harbor Isles, 1962.



Aerial view of Sunrise Boulevard, showing the Intracoastal Waterway bridge and the intersection with A-1-A, 1960.



A familiar scene for tourists — view north along A-1-A from the 2900 block, October 1968.