

Through the Lens of Steve Cresse:

BROWARD AT MID-CENTURY

Celebrating Victory . . .



Fort Lauderdale beach scene during World War II. Note sailor or Coast Guardsman at right, and in the background the observation tower and the warship steaming into Port Everglades.

Servicemen and local citizens celebrate V-J Day at Andrews Avenue and Las Olas Boulevard in downtown Fort Lauderdale, August 14, 1945.



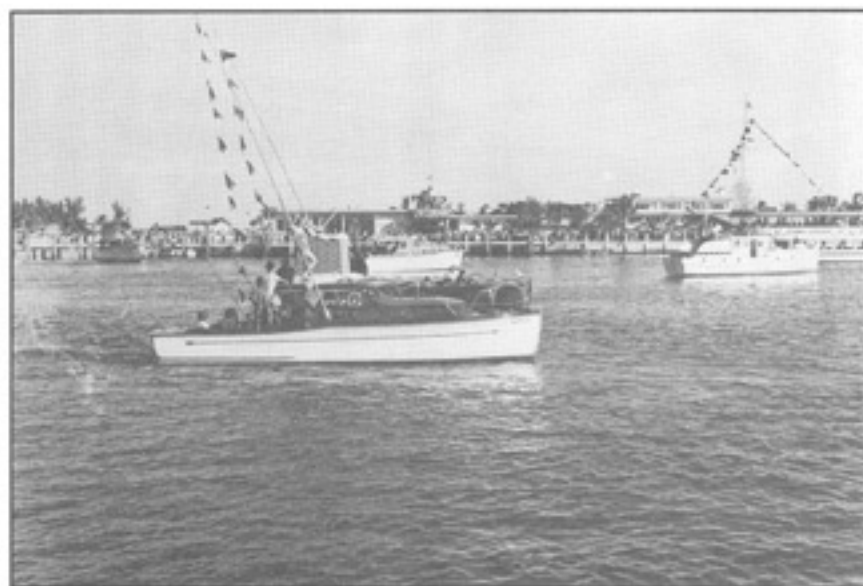
Life at Leisure . . .

Hallandale's Gulfstream Park opened briefly in 1939 before financial difficulties forced its closing. Purchased by James Donn in 1944, the track prospered after World War II. By the time this 1950s photo was taken it was one of Broward's leading attractions.



The Davie rodeo began as an informal event sponsored by local cattlemen and soon became a Broward County institution. This bronco-riding scene shows the old arena, constructed in 1946.

Santa Claus waves to the crowd at a Christmas boat parade along the Intracoastal Waterway in Fort Lauderdale. In the background is the Bahia Mar Yachting Center.



Famous Visitors . . .



Babe Ruth crowns Tomato Queen Kathleen Hambree at the Dania Tomato Days festival, March, 1948. The annual festivals, which celebrated Dania's position as "Tomato Capital of the World," featured a number of celebrity guests.



Cuban President Fulgencio Batista (center) enjoys a visit to Broward County in the late 1940s. At left is Cuban Vice-Consul Oscar Morales and at right is Seigfried Bechold.

. . . and Newsworthy Events

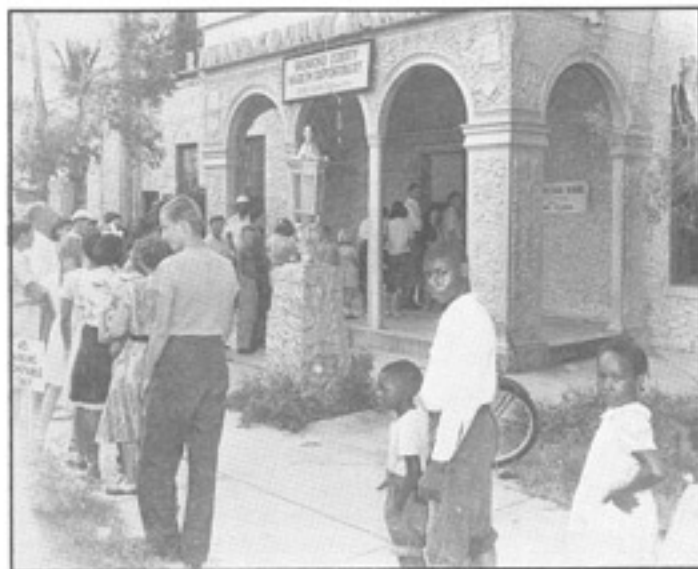


The discovery of the ruins of "Lost City" in the Everglades of far western Broward County made newspaper headlines in September 1949, and prompted speculation about whether the site had been an Indian or moonshiners' camp or something more mysterious. Here, guide Luther Raulerson examines bootlegging equipment at the site.

Demolition of the old Fort Lauderdale City Hall at Andrews Avenue and Southwest Second Street, May 1946, to make way for the construction of Burdines department store (now the Broward County Governmental Center).

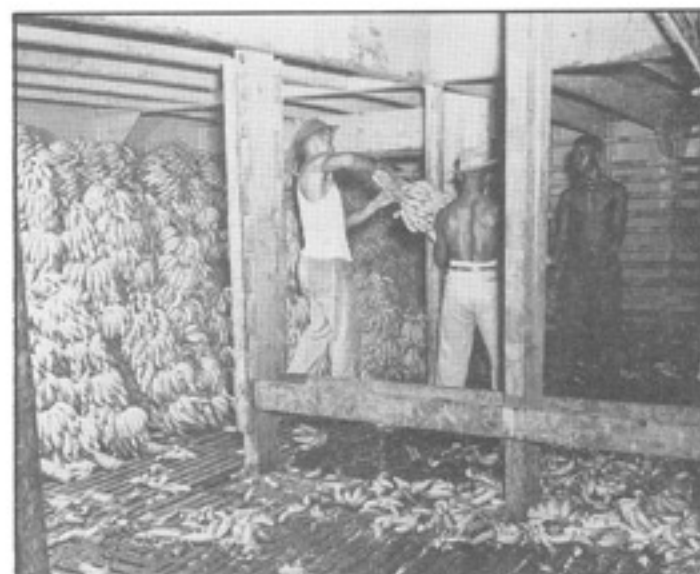


The Old and the New . . .



In the late 1940s, the Broward County Health Department was located in a building at 501 South Andrews Avenue which had been built in 1910 as Fort Lauderdale's second school building, and had served as the county's first courthouse from 1915 to 1928.

The Fort Lauderdale Daily News moved into this newly renovated and air conditioned plant — formerly a bowling alley — on Southeast First Avenue in 1949.



International trade, centering on Port Everglades, assumed greater importance in Broward's booming economy in the post-war years. Here, workers unload bananas, probably from Central America.

Despite the postwar population and building explosion, much of Broward County remained rural, and scenes like this were common throughout the '40s and '50s.

